





WFP LEBANON


SITUATION REPORT – June 2022


Participants of WFP's forestry project are on site in the Bekaa – Majdal Anjar area. Photo: WFP/Mustapha Ghabris

IN NUMBERS

-  **3,563,300** people in need of assistance

-  **1,699,000** people assisted in June 2022

-  **USD 25m** cash-based transfers made

-  **5,100 MT** of food distributed

SITUATION UPDATE

- Sporadic marches and protests against the dire living conditions occurred throughout June, amid continued inflation and absence of government intervention to resolve the challenges Lebanon is facing. Reflecting the deepening crisis, the World Bank recently ranked Lebanon as a lower-middle-income country, downgrading from its upper middle-income status held for the last 27 years, with a gross national income (GNI) per capita of USD 3,450. The GNI per capita has seen a 55 percent decrease from 2018, reflected in the over 2 million vulnerable Lebanese as of December 2021.
- Despite the stability of the market rate in June (averaging LBP 28,600 to the dollar), the price of the minimum food basket notably increased from LBP 792,000 in May to LBP 844,000 in June. This is mainly due to the increase in international and local fuel prices, which entail higher overall transportation and operational costs for food-related and other businesses.
- Increasing bread lines have been witnessed across the country as bakeries and millers report dwindling stocks of subsidized wheat. As of 29 June, the Ministry of Economy estimated that available stock in-country and incoming shipments would cover needs for more than a month, with plans to purchase locally produced wheat.

HIGHLIGHTS

- Despite the stability of the market rate in June, the price of the minimum food basket notably increased 6.6 percent month over month, from LBP 792,000 in May to LBP 844,000 in June following global fuel price increases.
- The average time it took beneficiaries to withdraw their cash assistance from ATMs noticeably decreased between January and June 2022 as a result of WFP's mitigation measures. WFP and LOUISE agencies are looking further into improving beneficiaries' access to and experience of redemption of their assistance.

WFP RESPONSE

Cash Assistance for Refugees

- In June, WFP provided unconditional cash assistance to 1,027,500 refugees through 3 modalities:
 - *Multipurpose Cash* for food and other essential needs redeemable at ATMs: 232,800 Syrian refugees
 - *Food e-cards* for food needs redeemable at WFP-contracted shops: 349,000 Syrian refugees
 - *Cash-for-Food* for food needs redeemable at ATMs or shops: 439,800 Syrian refugees and 5,900 refugees of other nationalities
- WFP, together with other LOUISE agencies, is planning to introduce an additional redemption channel through money transfer operators (MTO) for beneficiaries receiving cash assistance to reduce their travel time and costs. WFP has developed communication materials for beneficiaries and will conduct trainings for MTO agents to ensure safe and dignified access to assistance through this new channel.

Economic Crisis Response for Lebanese

- Through the emergency response to the ongoing economic crisis, WFP reached 81,914 vulnerable Lebanese households (around 319,300 individuals) with food parcels in June. Between January and June 2022, WFP has reached 380,872 vulnerable Lebanese in total through its in-kind food assistance.

WFP RESPONSE

School Meals

- In June, 71,742 Syrian and Lebanese students registered in the morning and afternoon shifts at 115 public schools benefitted from WFP's School Meals programme, reaching 98 percent of the target. This included 4,596 students who received cold meals prepared by students' mothers as part of the School Kitchens initiative.
- WFP is planning to support the Ministry of Education and Higher Education with the summer 'catch-up' programme for 25,000 students to enhance student preparedness after nearly two years of school closure due to COVID-19 and instability in Lebanon.

Livelihoods

- In coordination with the Ministry of Agriculture, WFP held the opening ceremony of the Food Safety Laboratory and Quarantine Centre, at the port of Beirut on 16 June. The project included rehabilitation of the destroyed laboratory centre, procurement and installation of damaged equipment, and replacement of the lost and destroyed laboratory tools and supplies to return functionality of these facilities. The rebuilding and augmentation of the facilities will help prevent the introduction and spread of harmful exotic plants and plant/animal product pests inside Lebanese territories.

Support to Social Protection Programmes

- WFP assisted 49,060 Lebanese households (around 280,000 individuals) through the National Poverty Targeting Programme (NPTP) in June and is planning to scale up assistance to reach 75,000 households by September.
- To enhance gender-sensitive programming for the NPTP, the Ministry of Social Affairs, UN Women, and WFP carried out a joint study in April 2022 to determine indicators and factors related to gender and protection. Preliminary findings recommend the provision of additional services and/or assistance to persons with disabilities, enhanced targeting models to reach marginalized groups such as the elderly and undocumented Lebanese, and strengthening of referral systems for victims of gender-based violence. The final report and recommendations are expected in July 2022.
- As of June, WFP delivered payments to 63,400 households (around 294,500 individuals) on behalf of the Government for the Emergency Social Safety Net (ESSN) and is continuing household verification visits to enable the Government to select ESSN beneficiaries.

Monitoring

- WFP interviewed over 700 beneficiaries receiving assistance in June to receive feedback and ensure their continued ability to access assistance. Only 3 percent reported visiting an ATM that was out of cash and the average withdrawal time was reported as 18 minutes, down from 30 minutes in January 2022. These improvements are a result of mitigation measures taken by WFP to ensure replenishment of ATMs, crowd control and management. However, the average cost to reach an ATM has increased to LBP 72,000 (from LBP 60,000 in March) as a result of increased fuel prices.

Gender, Protection & Accountability to Affected Populations (AAP)

- In June, WFP received 56,664 claims through its call centre, with 60 percent of calls received from women and 58 percent from Lebanese. Over half of the claims were to request assistance, a third to request information, and the rest to provide feedback or express concerns. The timeframe of resolution continued to improve, with nearly all cases (97 percent) resolved during the same month.
- WFP organized a training in collaboration with UNICEF and TDH-Italy for field and partner staff to ensure safe referrals and exit for working children in WFP-contracted shops. A training was also organized for partners (73 staff of which 60 percent were women) to enhance their capacity to recognize, address, and mitigate protection risks and concerns, including standards for establishing and operating helpdesks at distribution sites, to ensure safe and dignified access to assistance.

Supply Chain & Retail

- To further support beneficiaries redeeming their assistance at contracted shops, WFP contracted 64 additional retailers in June. This will ensure reduced travel time and costs for beneficiaries reaching shops, enabling them to maximize the value of assistance.
- The newly established WFP warehouse in Tripoli became fully operational in June and is powered entirely through solar panels.

ADVOCACY, COMMUNICATIONS & PARTNERSHIPS

- WFP held a donor briefing on the wheat situation in Lebanon on 17 June, presenting scenarios on the impact of wheat subsidy removal and a sustainable framework including targeted support for the most vulnerable. Given the ongoing discussions and recent developments around wheat stocks in the country, WFP is providing partners with regular updates of publicly available information on the current wheat supply chain/stock status in the country.
- In June, WFP produced videos on its [refugee assistance](#), [cash assistance to Lebanese families](#), [school meals](#), [livelihoods projects' updates](#), [World Environment Day awareness](#), [visualization of WFP data](#), and an update on the [Share The Meal Campaign](#).

FOOD SECURITY AND AGRICULTURE SECTOR

- Overall between January and May 2022, 28 sector partners including WFP assisted 1.86 million Lebanese and refugees through the Lebanese Crisis Response Plan (LCRP) and Emergency Response Plan (ERP). This includes in-kind food assistance to 459,100 individuals (including 359,900 Lebanese and 82,700 Syrian refugees) and cash assistance to 1.4 million individuals (including 278,000 Lebanese and 1,038,000 Syrian refugees).

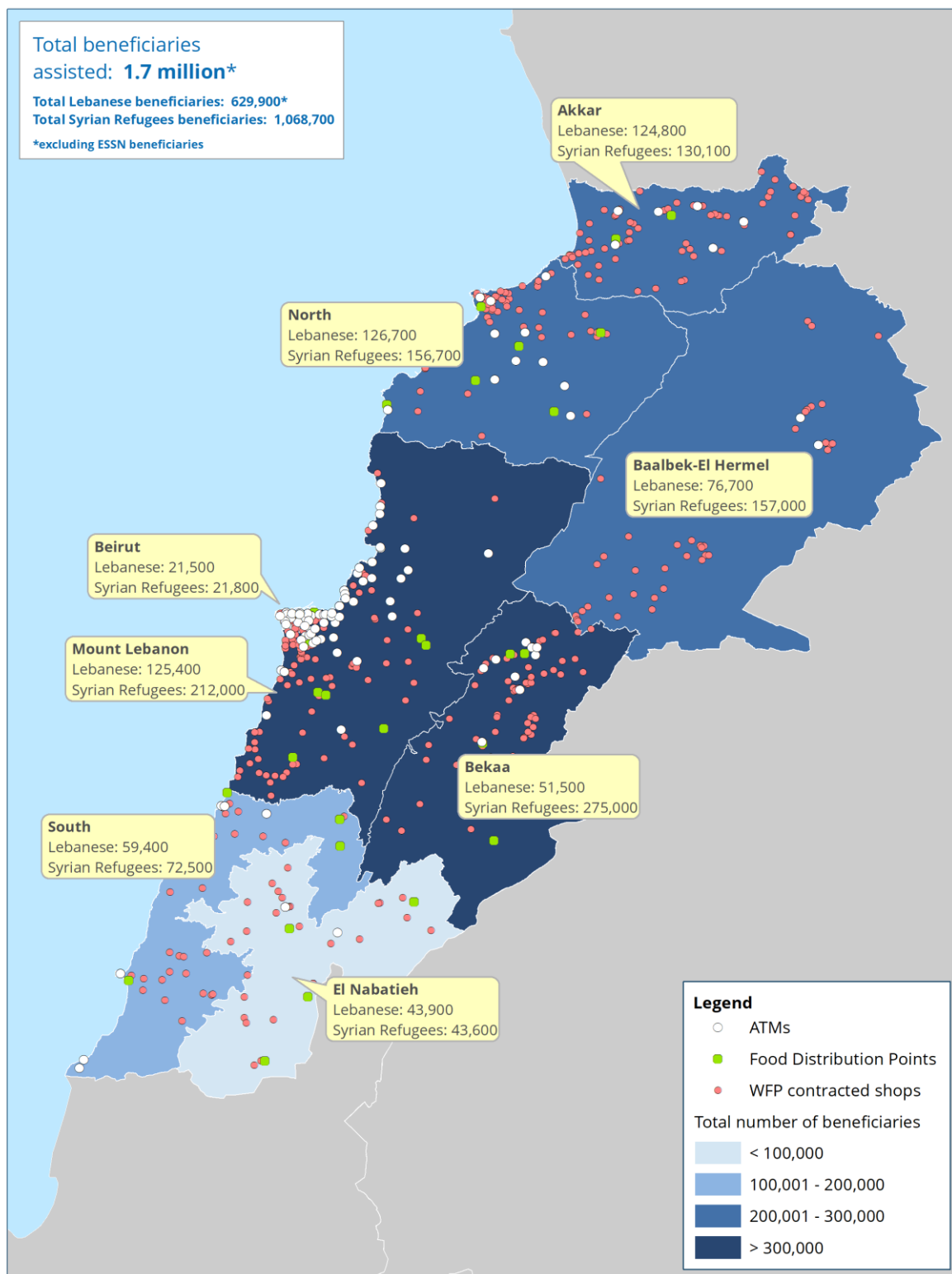
FUNDING OVERVIEW





Lebanon

WFP Cash and In-kind Assistance for Refugees and Lebanese – June 2022



Donors

Australia, Belgium, Canada, Cyprus, European Commission, France, Germany, Ireland, Italy, Japan, Lebanon's Presidency of the Council of Ministers, Lebanon Humanitarian Fund, Norway, Poland, Private Donors, Republic of Korea, Russia, Switzerland, UN CERF, United Kingdom, USA