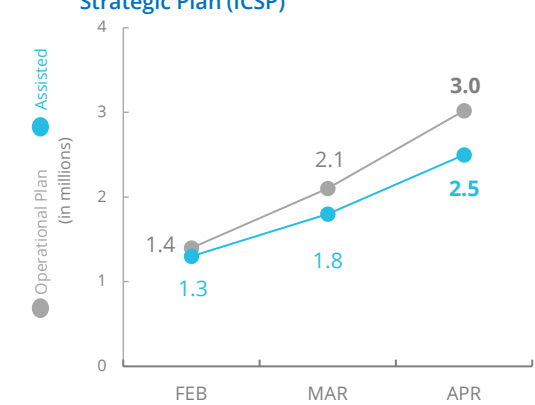
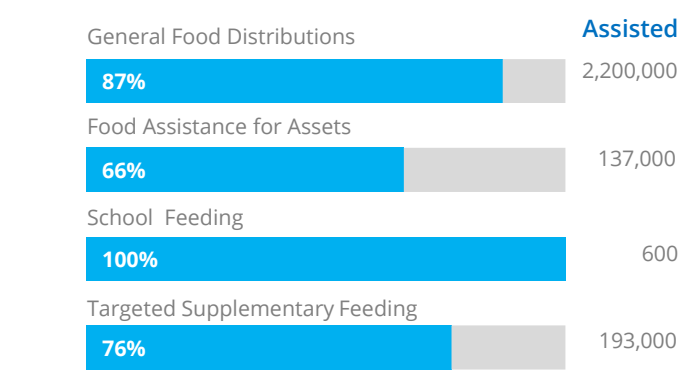


South Sudan

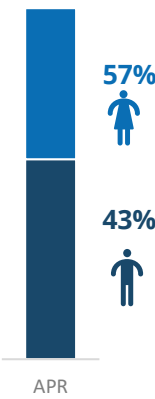
PEOPLE ASSISTED



OPERATIONAL PROFILE



By Gender (April)



SOURCE: WFP, MAY 2021

FUNDING

South Sudan Interim Country Strategic Plan (ICSP)

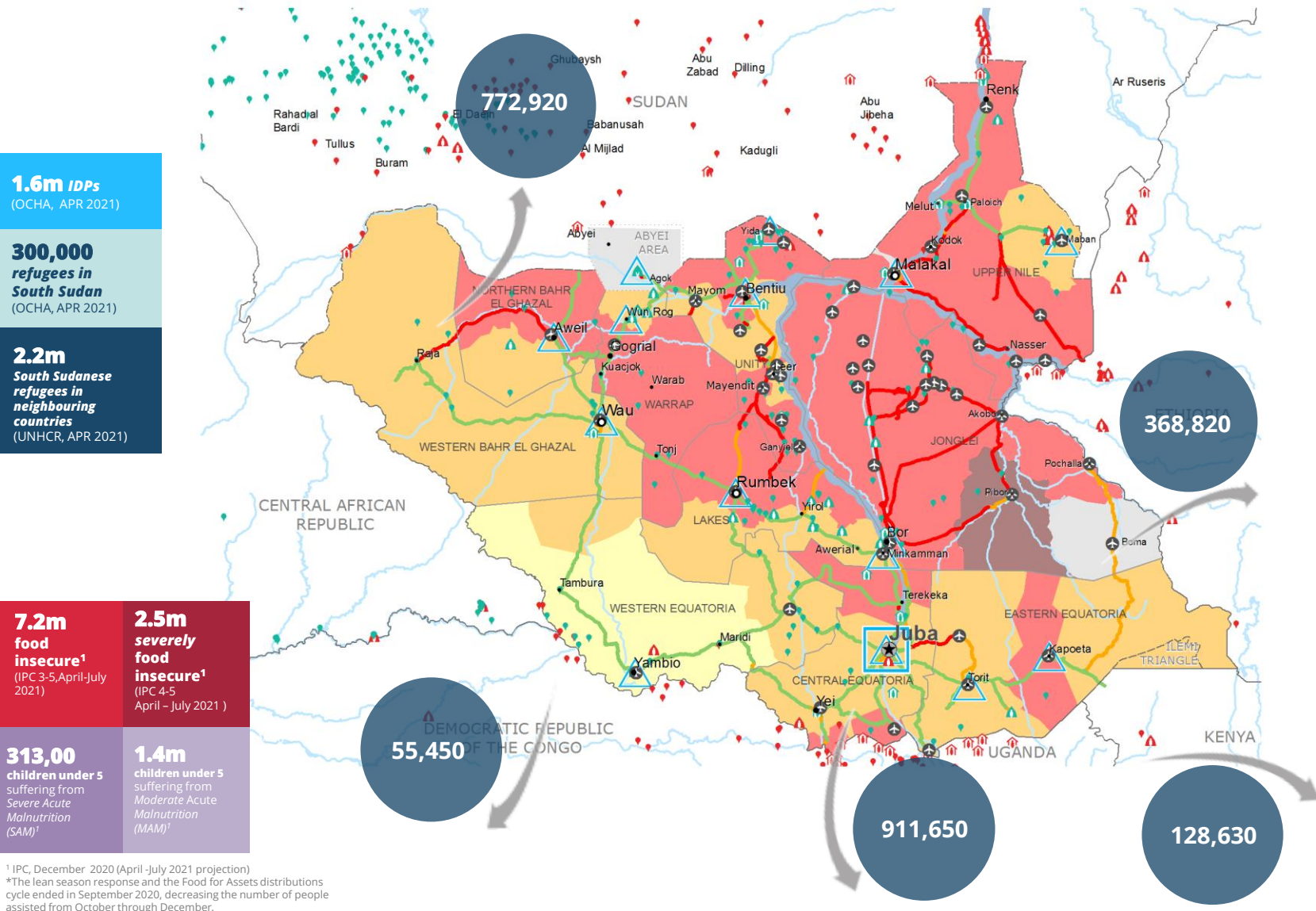
June 2021 – November 2021

US\$ 140.3m
Net funding requirements

2021 LEVEL 3 RESPONSE
Requirements: US\$919.1m
Contributions: US\$566.2m

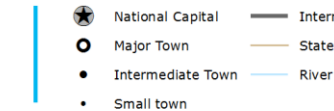
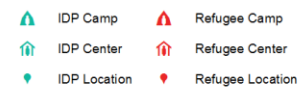


SOURCE: WFP, 21 MAY 2021



IPC Food Security Classification

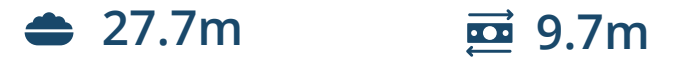
April - July 2021 Projection



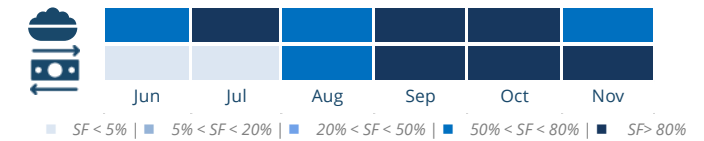
SOURCES: WFP, UNGIWG, GAUL, GLSCS, OCHA, UNHCR. Access Constraints Map, January 2021.

The designations employed and the presentation of material in the map(s) do not imply the expression of any opinion on the part of WFP concerning the legal or constitutional status of any country, territory, city or sea, or concerning the delimitation of its frontiers or boundaries. © World Food Programme 2021

AVERAGE MONTHLY FUNDING REQUIREMENTS (US\$)

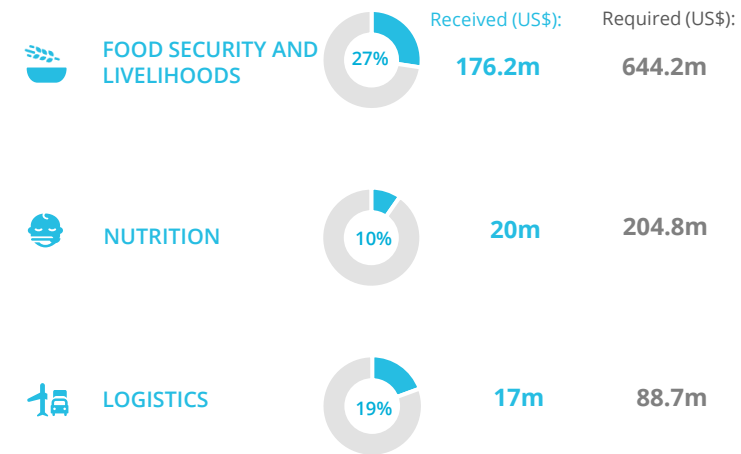


EXPECTED SHORTFALLS



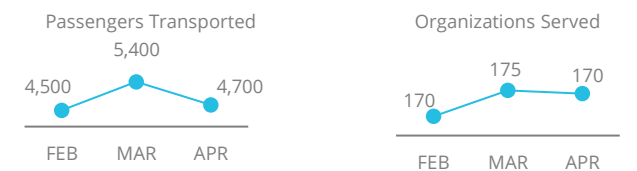
SOURCE: WFP, 26 MAY 2021

WFP-LED AND SUPPORTED CLUSTERS



SOURCE: WFP, FTS 1 JUNE 2021

UN HUMANITARIAN AIR SERVICES (UNHAS)



SOURCE: WFP, MAY 2021

WFP LEVEL 3 EMERGENCY
SINCE 23 December 2013



SITUATION REPORT and COUNTRY BRIEF

