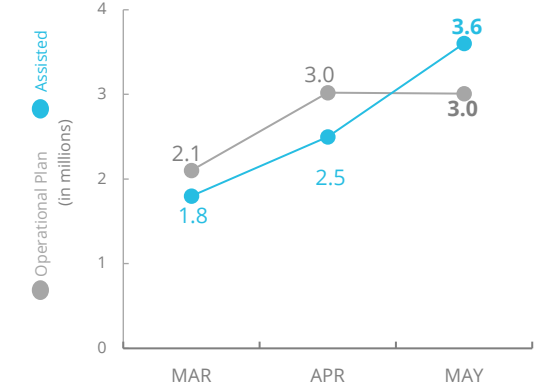


South Sudan

Emergency Dashboard | June 2021

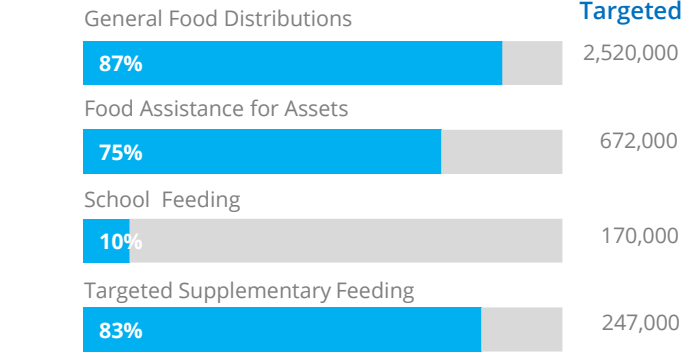
PEOPLE ASSISTED

South Sudan Interim Country Strategic Plan (ICSP)



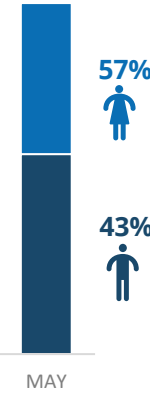
OPERATIONAL PROFILE

By Activity (May)



SOURCE: WFP, JUNE 2021

By Sex



FUNDING

South Sudan Interim Country Strategic Plan (ICSP)

July 2021 – December 2021

US\$ 169.0m
Net funding requirements

2021 LEVEL 3 RESPONSE
Requirements: US\$919.1m
Contributions: US\$594.6m

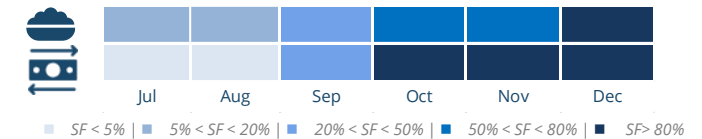


SOURCE: WFP, 22 JUNE 2021

AVERAGE MONTHLY FUNDING REQUIREMENTS (US\$)

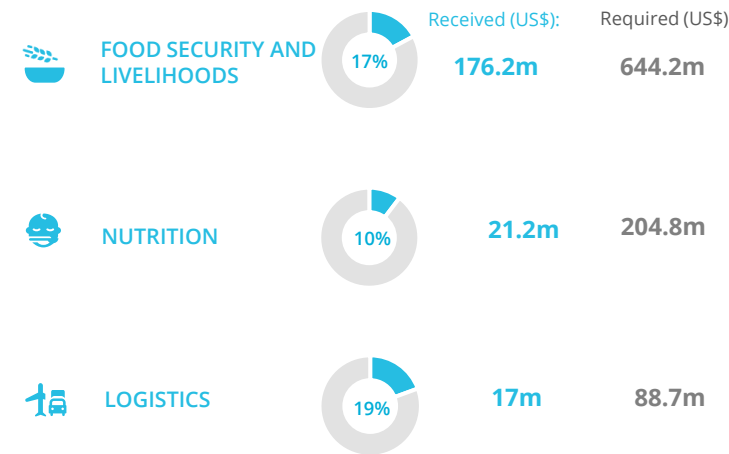


EXPECTED SHORTFALLS



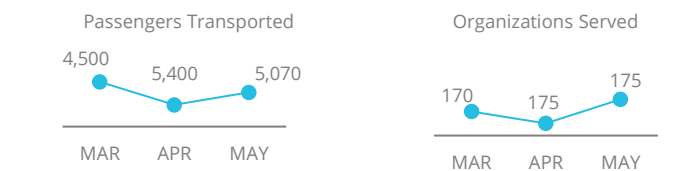
SOURCE: WFP, 08 JUNE 2021

WFP-LED AND SUPPORTED CLUSTERS



SOURCE: FTS 8 JULY 2021

UN HUMANITARIAN AIR SERVICES (UNHAS)



SOURCE: WFP, JUNE 2021

1.6m IDPs
(OCHA, JUNE 2021)

300,000 refugees in South Sudan
(OCHA, JUNE 2021)

2.2m* South Sudanese refugees in neighbouring countries
(UNHCR, MAY 2021)

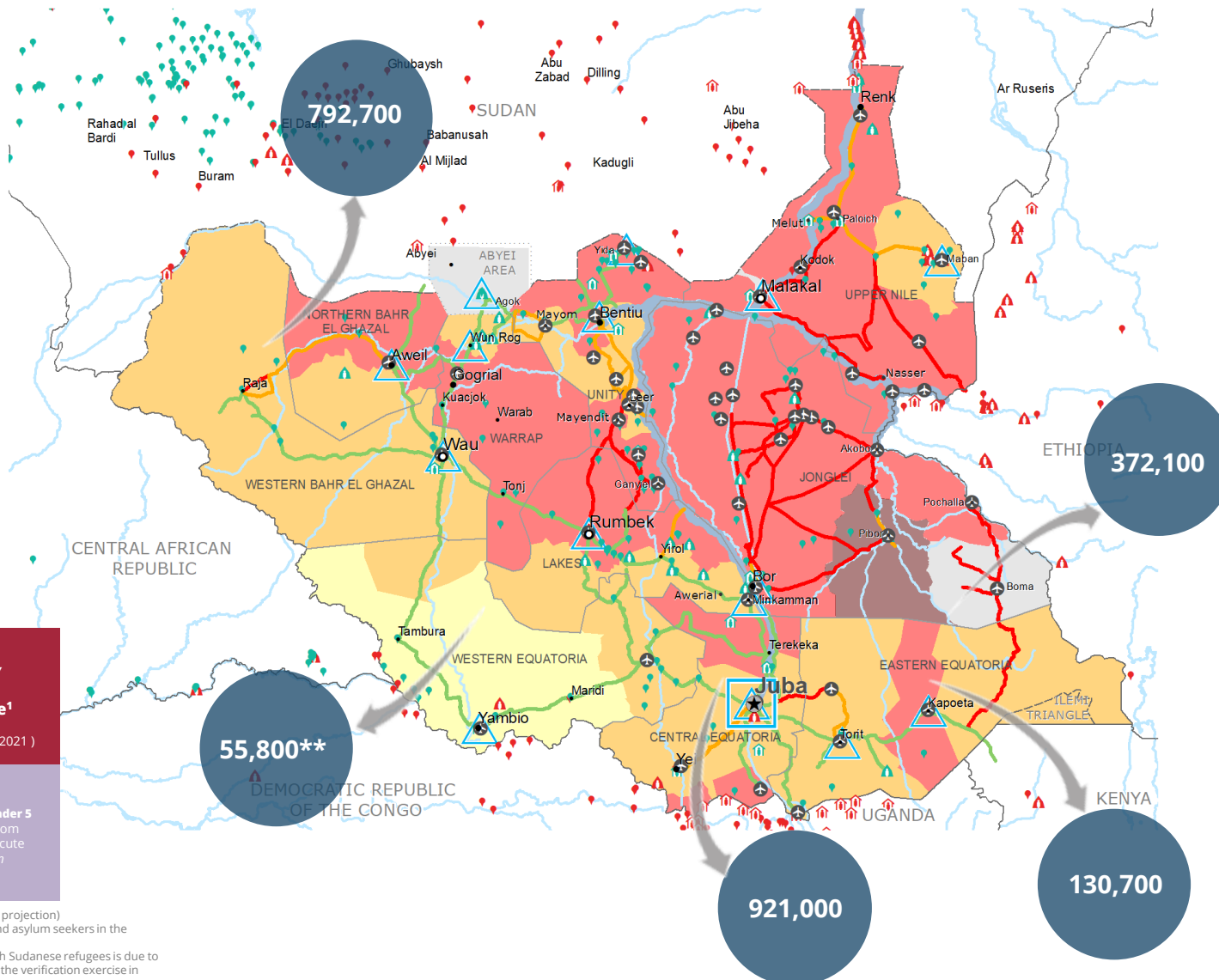
7.2m food insecure¹
(IPC 3-5, April-July 2021)

2.5m severely food insecure¹
(IPC 4-5 April - July 2021)

313,00 children under 5 suffering from Severe Acute Malnutrition (SAM)²

1.4m children under 5 suffering from Moderate Acute Malnutrition (MAM)²

¹ IPC, December 2020 (April-July 2021 projection)
² This figure excludes 1816 refugees and asylum seekers in the Central African Republic
 **The decrease in the number of South Sudanese refugees is due to inactivation of refugees absent during the verification exercise in Ituri Province



IPC Food Security Classification
April - July 2021 Projection

- Country Office
- Sub Office
- Field Office
- Road Closed
- Road Open
- Road with restricted access
- UNHAS Connection
- IDP Camp
- IDP Center
- IDP Location
- Refugee Camp
- Refugee Center
- Refugee Location
- National Capital
- Major Town
- Intermediate Town
- Small town
- International Boundary
- State boundary
- River

Sources: WFP, UNGIWI, GAUL, GLCSC, OCHA, UNHCR. Access Constraints Map, July 2021.

The designations employed and the presentation of material in the map(s) do not imply the expression of any opinion on the part of WFP concerning the legal or constitutional status of any country, territory, city or sea, or concerning the delimitation of its frontiers or boundaries. © World Food Programme 2021

WFP LEVEL 3 EMERGENCY
SINCE 23 December 2013

2A

[SITUATION REPORT and COUNTRY BRIEF](#)