

# Afghanistan

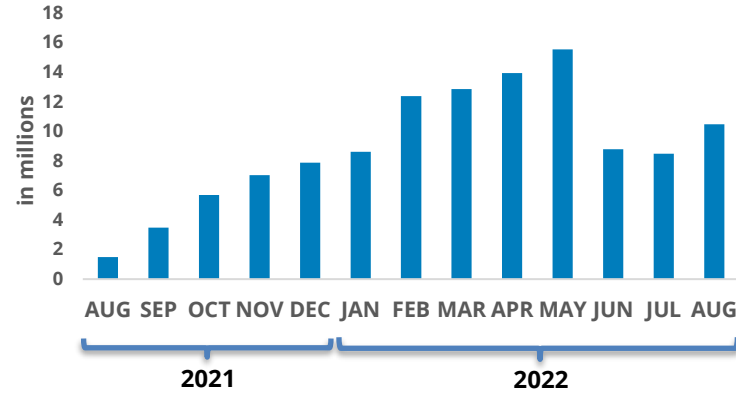
## KEY FIGURES

**10.5 mln**  
People reached

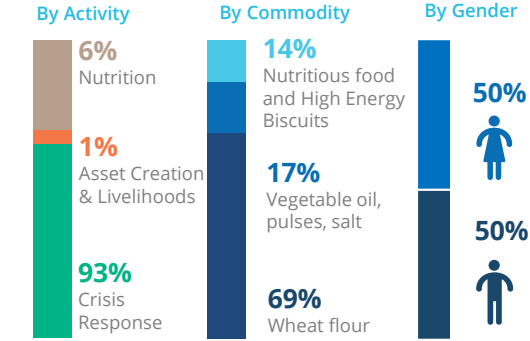
**US\$ 21.4 mln**  
Cash transfers disbursed

**84,100 mt**  
Food distributed

## PEOPLE REACHED PER MONTH



## OPERATIONAL PROFILE August 2022



SOURCE: WFP, OCT 2022



**FUNDING**  
Afghanistan Country Strategic Plan (CSP)  
01 July 2018 – 31 December 2023  
Overall CSP Value: US\$6b

**September 2022 – February 2023**

Requirements  
**US\$1.64b**

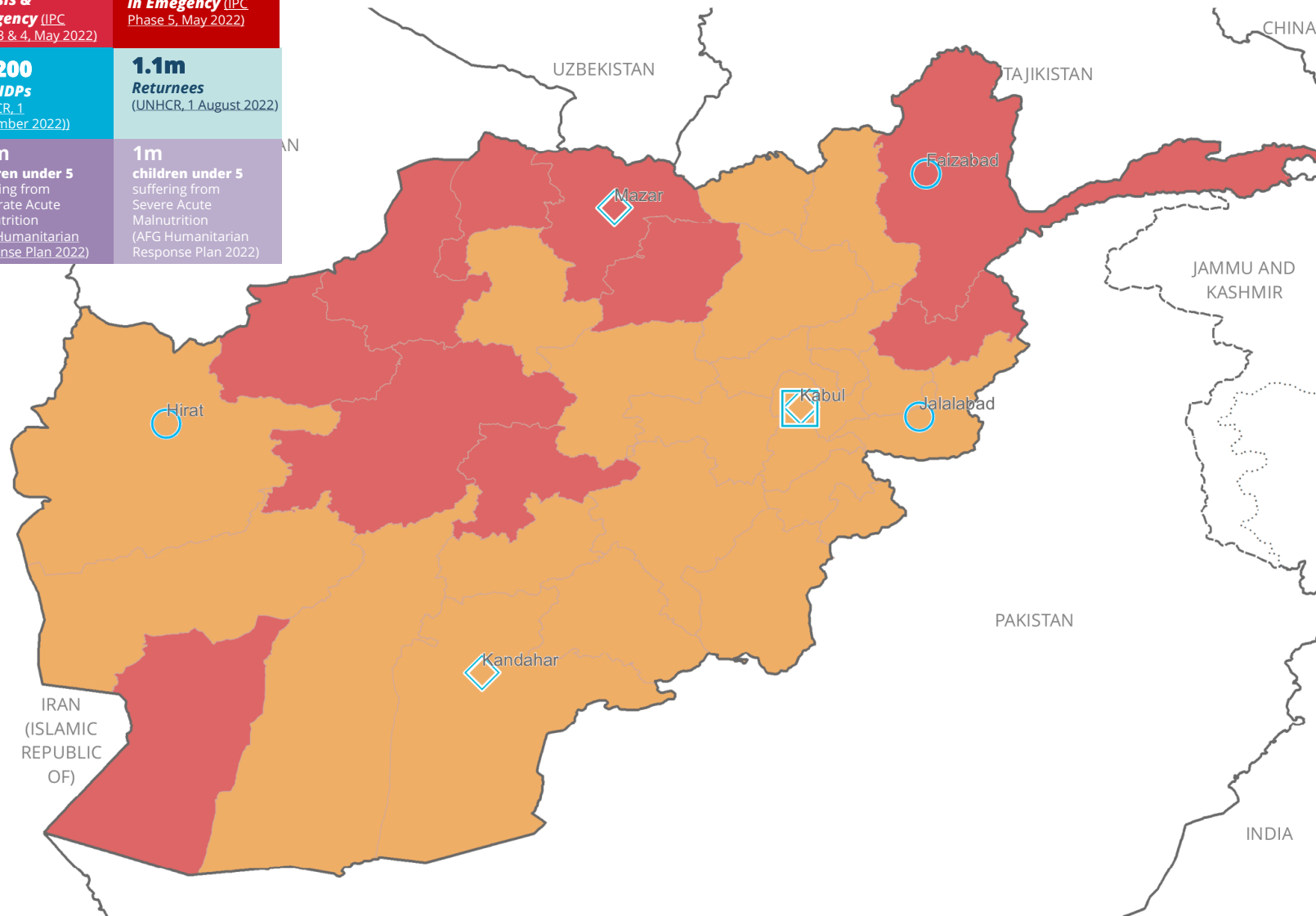
Net Funding Requirements  
**US\$1.1b**

Shortfall (next 6 months)  
**US\$960m**

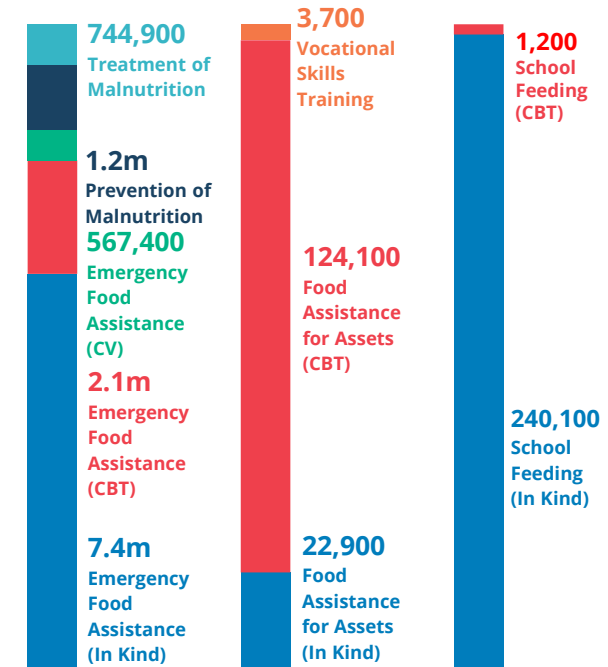


SOURCE: WFP, OCT 2022

<b>18.9m people</b> in Crisis & Emergency (IPC Phase 3 & 4, May 2022)	<b>6m people</b> in Emergency (IPC Phase 5, May 2022)
<b>30,200</b> New IDPs (UNHCR, 1 September 2022)	<b>1.1m</b> Returnees (UNHCR, 1 August 2022)
<b>2.8m</b> children under 5 suffering from Moderate Acute Malnutrition (AFG Humanitarian Response Plan 2022)	<b>1m</b> children under 5 suffering from Severe Acute Malnutrition (AFG Humanitarian Response Plan 2022)



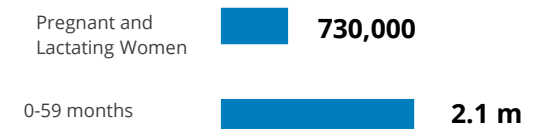
## PEOPLE REACHED BY ACTIVITY



Crisis Response    Asset Creation & Livelihoods    Nutrition



## MALNOURISHED PEOPLE REACHED



SOURCE: WFP, 28 AUG 2022

**WFP Emergency Classification: Corporate Attention**

[Situation Report and Country Brief](#)  
[Afghanistan Country Strategic Plan](#)

Follow us @WFP\_AsiaPacific for the latest news



IPC Phases  
June - November 2022

- Crisis (Phase 3)
- Emergency (Phase 4)

WFP Offices

- Country Office
- Area Office
- Sub-Office

- International boundaries
- Province boundaries
- Armistice or international administrative lines
- Other lines of separation

Sources: WFP, UNGIWG, GAUL, GLCSC, OCHA, MSNA/HNO, IOM

The designations employed and the presentation of material in the map(s) do not imply the expression of any opinion on the part of WFP concerning the legal or constitutional status of any country, territory, city or sea, or concerning the delimitation of its frontiers or boundaries.  
© World Food Programme 2020.