



World Food Programme

SAVING LIVES
CHANGING LIVES



WFP Lebanon | Situation Report

July 2024

OPERATIONAL CONTEXT

As per the latest World Bank report issued in May 2024, poverty in Lebanon has more than tripled over the past decade, reaching 44 percent of the population. Additionally, the updated [Integrated Food Insecurity Phase Classification \(IPC\) analysis](#) conducted in March 2024 projected a deterioration in the food security situation in Lebanon - from 19 percent food insecure people in March 2024 to 23 percent between April and September 2024, equivalent to 1.26 million people. The projected deterioration is mainly driven by the persistent political and socio-economic crises, the reduction of humanitarian assistance in 2024 to Lebanese nationals, and Syrian and Palestine refugees as well as the ongoing conflict along Lebanon's southern border, which has impacted over 200,000 individuals half of whom are internally displaced.

The monthly cost of the full Survival Minimum Expenditure Basket (SMEB) increased by 2.9 percent between May and June 2024, reaching LBP 38.4 million (US\$ 426) for a family of five. The cost of the food basket alone slightly increased by 1 percent for the same period, reaching LBP 3.16 million (US\$ 34.9) per person per month.

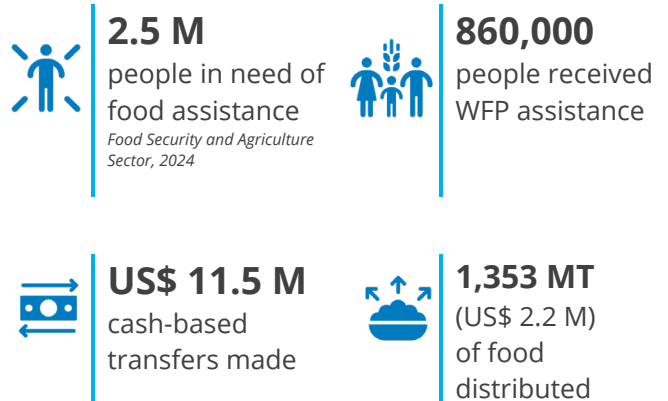
WFP RESPONSE

In line with its Country Strategic Plan (CSP) for 2023–2025, WFP remains focused on the response to Lebanon's economic and refugee crises and the additional needs linked to the escalating security situation in South Lebanon since October 2023. In July, WFP provided assistance to around 680,000 Syrian refugees and over 180,000 Lebanese nationals. However, due to funding constraints and based on retargeting exercises, WFP has reduced assistance to both refugees and Lebanese by up to 52 percent reaching around 1 million individuals during the first half of 2024 compared to 2.1 million in November 2023.

FUNDING OVERVIEW

	% Funded	Available	Required
Country Strategic Plan (2023-2025)	25%	US\$ 764 M	US\$ 3.1 B
2024 Total Requirements	27%	US\$ 263 M	US\$ 960 M
Net Funding Requirements (Aug 2024 - Jan 2025)		US\$ 290.1 M	

IN NUMBERS - JULY 2024



HIGHLIGHT: WFP RESPONSE IN SOUTH LEBANON

In July, the intensity of the conflict on Lebanon's southern borders continued to rise and has expanded to the Southern suburbs of Beirut. Since the onset of the conflict, over 100,000 people have been internally displaced. 1,340 individuals currently reside in shelters, while the rest stay with families in secondary residences or sub-par dwellings improvised as shelters. Security challenges in the South also led to the closure of 72 public and private schools, affecting more than 20,000 enrolled students.

In addition to its regular programmes in the South, **WFP has supported over 228,000 people affected by the conflict since October 2023**, with several rounds of food and cash assistance helping to cover their additional needs. In July alone, **around 72,000 affected Lebanese people and refugees were assisted by WFP in the South** through in-kind food (6,300 Lebanese) and cash assistance (58,000 Lebanese and 7,300 refugees). WFP is also preparing for a larger emergency response in case of further escalation.

WFP RESPONSE

Cash Assistance for Refugees



In July, with the help of supplementary funding, WFP reincluded around 45,000 refugees (10,000 households) out of the 143,000 individuals (30,000 households), who were discontinued from food e-card assistance in May 2024.

This led to **WFP providing unconditional cash-based assistance to 670,000 Syrian refugees** (120,500 households) who can redeem their assistance at ATMs, money transfer agents, and/or shops contracted by WFP.

Economic Crisis Response Supporting Lebanese

Based on the first phase of a retargeting exercise, WFP reduced the number of Lebanese households receiving in-kind food assistance by 52 percent in January 2024 and further reduced its coverage by 20 percent in July, following the completion of the second phase of the retargeting exercise conducted during the first half of 2024. As a result, WFP reached 120,000 individuals (28,000 households) with food parcels in July. All households discontinued from assistance were given the option to appeal and will be reconsidered for assistance in the coming months upon a further review of their vulnerability status.

Support to Social Protection Programmes* for Lebanese

In July 2024, WFP's cash assistance under the National Poverty Targeting Programme (NPTP) came to an end for all 400,000 assisted Lebanese individuals, with the final disbursement made in June. This marked the conclusion of the NPTP, as beneficiaries are set to transition into the Government's Emergency Social Safety Net (ESSN) programme starting in August to create a unified, government-led social protection framework by the end of 2024, with WFP continuing to provide technical support for ESSN cash transfers. However, due to delays in the Government's release of ESSN funds, no ESSN payments were made in July to the 400,000 individuals entitled to cash assistance leaving them without expected financial assistance.

In July, WFP, the Ministry of Social Affairs (MoSA), and the Presidency of the Council of Ministers (PCM) launched the final phase of the NPTP recertification for 17,900 additional NPTP applicant households, following the June recertification of 72,000 assisted households. Full results anticipated in August 2024, will determine the total number of newly integrated people into ESSN.

Additionally, the WFP-supported Social Safety Nets Grievance Redress Mechanism and call center at MoSA began operations in July following WFP's onboarding training sessions for call centre staff.

School Meals for Lebanese and Refugees

While public schools are on summer break, WFP continued piloting the integration of the school meals programme into 10 private free schools under the UNICEF Dirasa programme that aims at bringing out-of-school children, including children with disabilities back into classrooms. In July, WFP supported the cause by providing daily snacks to around 1,800 students in 10 Dirasa schools.

Livelihoods for Lebanese and Refugees

In July, WFP engaged 600 Syrian and Lebanese participants in livelihood activities ranging from technical training for farmers to rehabilitation of agricultural assets.

** The NPTP is funded by WFP donors and the ESSN programme is funded through a World Bank loan to the Government of Lebanon, with WFP implementing cash transfers as a service provider.*

GENDER & SOCIAL INCLUSION, PROTECTION & ACCOUNTABILITY TO AFFECTED POPULATIONS (AAP)

The announcement of the retargeting exercise results for Lebanese receiving in-kind food assistance and the re-inclusion of Syrian refugee households into cash assistance led to a significant 65 percent surge in calls received by the WFP call center between June and July 2024 (from 21,700 to 35,700 claims respectively). 93 percent of the claims were addressed and closed in the same month. All protection-related claims were referred to relevant partners for Sexual and Gender-Based Violence (SGBV), child protection, threats, legal counseling, and shelter.

Notably, 30 percent of the claimants requested WFP assistance, 17 percent of the calls were related to programmes (e.g. distribution and validation issues), 8 percent requested to update their personal data, 1 percent of the calls were protection-related, and 44 percent requested information on other topics.

To mitigate access challenges during a potential escalation in armed conflict, WFP designed and is currently testing an interagency enrollment system to allow affected individuals to self-enroll for humanitarian assistance, ensuring they can be considered for humanitarian support.

In July, WFP conducted a training session for gender and protection focal points from three NGO partners equipping them with practical skills to enhance men's engagement in Gender-Based Violence (GBV) prevention. The trained NGO staff will conduct six targeted awareness sessions for 100 male beneficiaries to promote active male engagement in GBV prevention efforts. WFP continues to prioritize disability inclusion reaching 44,800 people with disabilities in July through its different activities.

MONITORING & ASSESSMENTS

WFP's on-site post-distribution monitoring showed that seven percent of interviewed Syrian refugees felt it was unsafe to get to the distribution point or return home mainly due to the rising tensions between refugees and Lebanese and suggested having an ATM or Money Transfer Operator (MTO) near their homes. WFP is expanding its ATM and MTO network with all locations currently within 5 km of each beneficiary.

NUTRITION

In July, WFP participated in a national workshop organized by the World Health Organisation and the Ministry of Public Health to review the national guidelines for managing acute malnutrition. Moreover, WFP launched an SMS campaign in the North and Akkar Governorates to invite pregnant and breastfeeding women (PBW) with children under 6 months to WFP malnutrition screenings. This initiative proved highly effective, tripling the number of PBWs attending screening at distribution sites enabling timely identification and intervention for potential malnutrition cases.

FOOD SECURITY & AGRICULTURE SECTOR

Since the onset of the conflict in South Lebanon, sector partners have distributed more than 610,000 daily meals, and 60,000 food parcels and Ready-To-Eat meals to people affected by the crisis (as of the end of July). The sector also collectively provided one-time or multiple rounds of cash assistance to more than 67,000 affected households and 290 farmers whose agricultural livelihoods were impacted by the conflict.

ADVOCACY, COMMUNICATIONS & PARTNERSHIPS

Given the heightening tensions in the South and across many areas in Lebanon, WFP continued to meet with its donors to update them on its emergency response and advocate for additional resources to sustain assistance and swiftly respond as needed in the event of a sudden escalation.

In July, WFP launched the Climate Adaptation Innovation Accelerator Programme, a US\$10 million initiative set to run over five years. This programme invites innovative ventures from Lebanon, Jordan, and Egypt to apply for grants of up to US\$200,000, aiming to enhance food security by promoting local, climate-adaptive solutions. The accelerator programme aims to support high-potential ventures with funding, mentorship, and hands-on support, preparing them for successful scaling. WFP Lebanon is a key participant in this campaign, focusing on local solutions to strengthen food security and fight climate change. Read more [here](#).

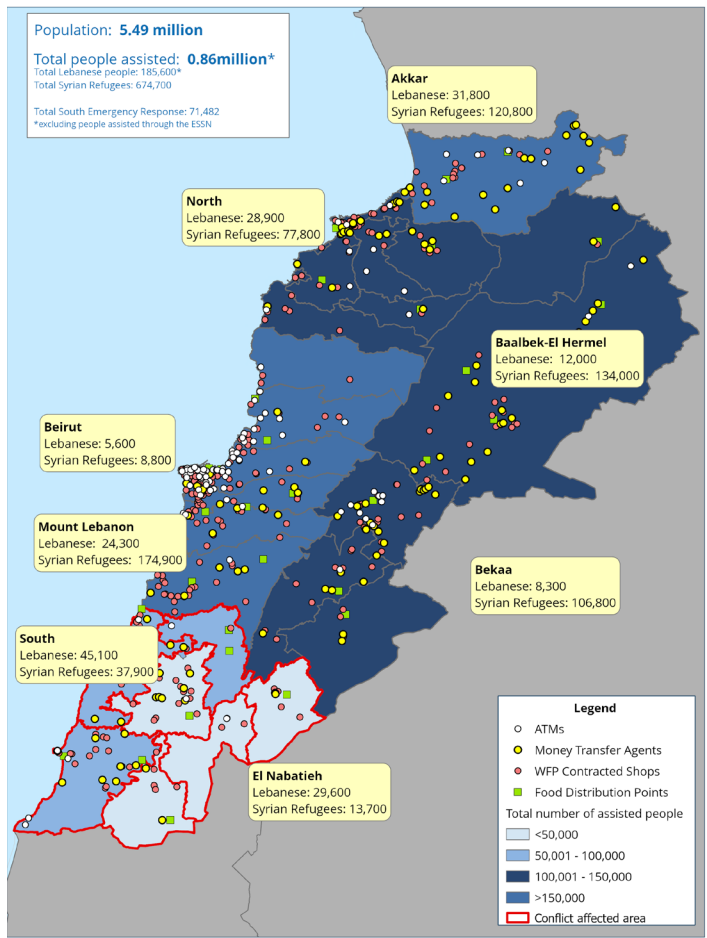
KEY CHALLENGES

Due to funding shortfalls, WFP faces a dual challenge to sustain regular emergency programmes for Syrian refugees and vulnerable Lebanese at a proper scale while maintaining its additional response in the South. WFP continues to advocate for funds to meet the high needs, through strategic engagements with key donors and exploring funding opportunities with new donors.

Donors

Australia, Austria, Canada, European Union, Finland, France, Germany, United Kingdom, Ireland, Italy, Lebanon's Presidency of the Council of Ministers, Malta, Norway, Private Donors, Republic of Korea, Russian Federation, Switzerland, USA

WFP CASH & IN-KIND ASSISTANCE FOR REFUGEES AND LEBANESE - JULY 2024



In a modest house in Sin el Fil, Alida, a 50-year-old widow, holds her family together. As a practical nurse earning US\$ 200 a month, she supports her elderly mother and three children. Her home is far from ideal; the small rooms are falling apart, but it's the only place they have. Her children, aged 24, 25, and 16, struggle to find work in a country facing severe economic problems. For the past three years, Alida's family has relied on in-kind food assistance from WFP. "This assistance is vital for me and my children," Alida says. "I no longer need to buy basic items; they are all in the box." Despite the challenges, Alida cherishes the moments she shares with her children at the dinner table. "I love to sit at the table with my children to have dinner together. I feel safe," she says. Alida worries about the future but is determined to keep her family together and make ends meet. While their circumstances may be difficult, her unwavering dedication to her family and the support they receive through WFP provide a crucial lifeline in their daily struggle for survival.