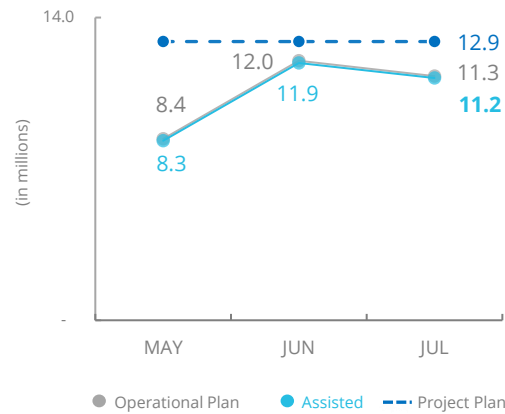
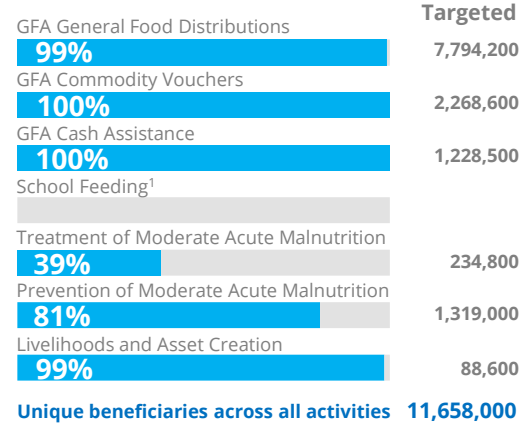


## PEOPLE ASSISTED\* General Food Assistance (GFA)

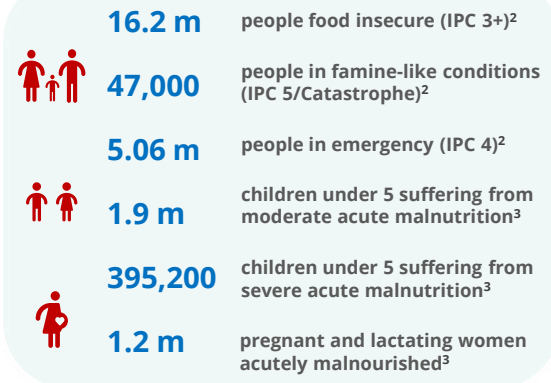


## OPERATIONAL PROFILE By Activity (July)



SOURCE: WFP, 13 SEP 2021  
<sup>1</sup>No school feeding was conducted in June as schools were closed for summer holidays.

## PEOPLE IN NEED



<sup>2</sup>IPC (Jan - Jun 2021); <sup>3</sup>IPC Acute Malnutrition Analysis (January 2020 - March 2021)

## FUNDING Yemen Interim Country Strategic Plan (ICSP)

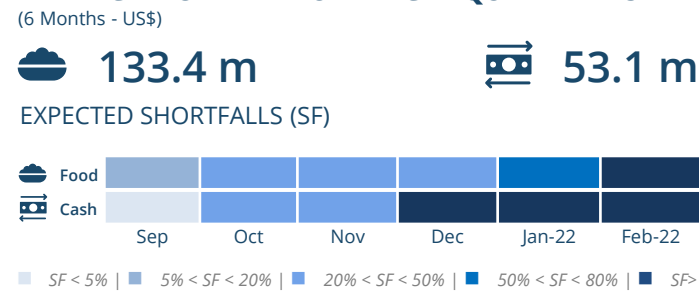
September 2021 – February 2022

# US\$589.7 m

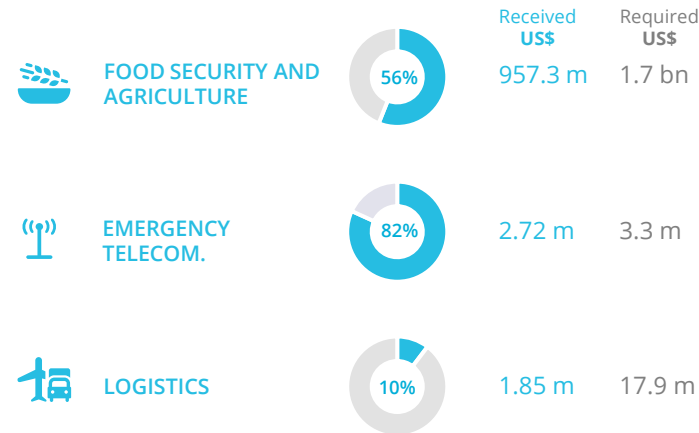
Net funding requirements

**2021 LEVEL 3 RESPONSE**  
 Requirements: US\$1.91 bn  
 Confirmed Contributions: US\$1.16 bn

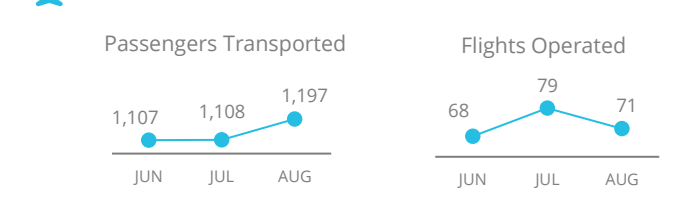
## AVERAGE MONTHLY FUNDING REQUIREMENTS



## WFP-LED AND SUPPORTED CLUSTERS



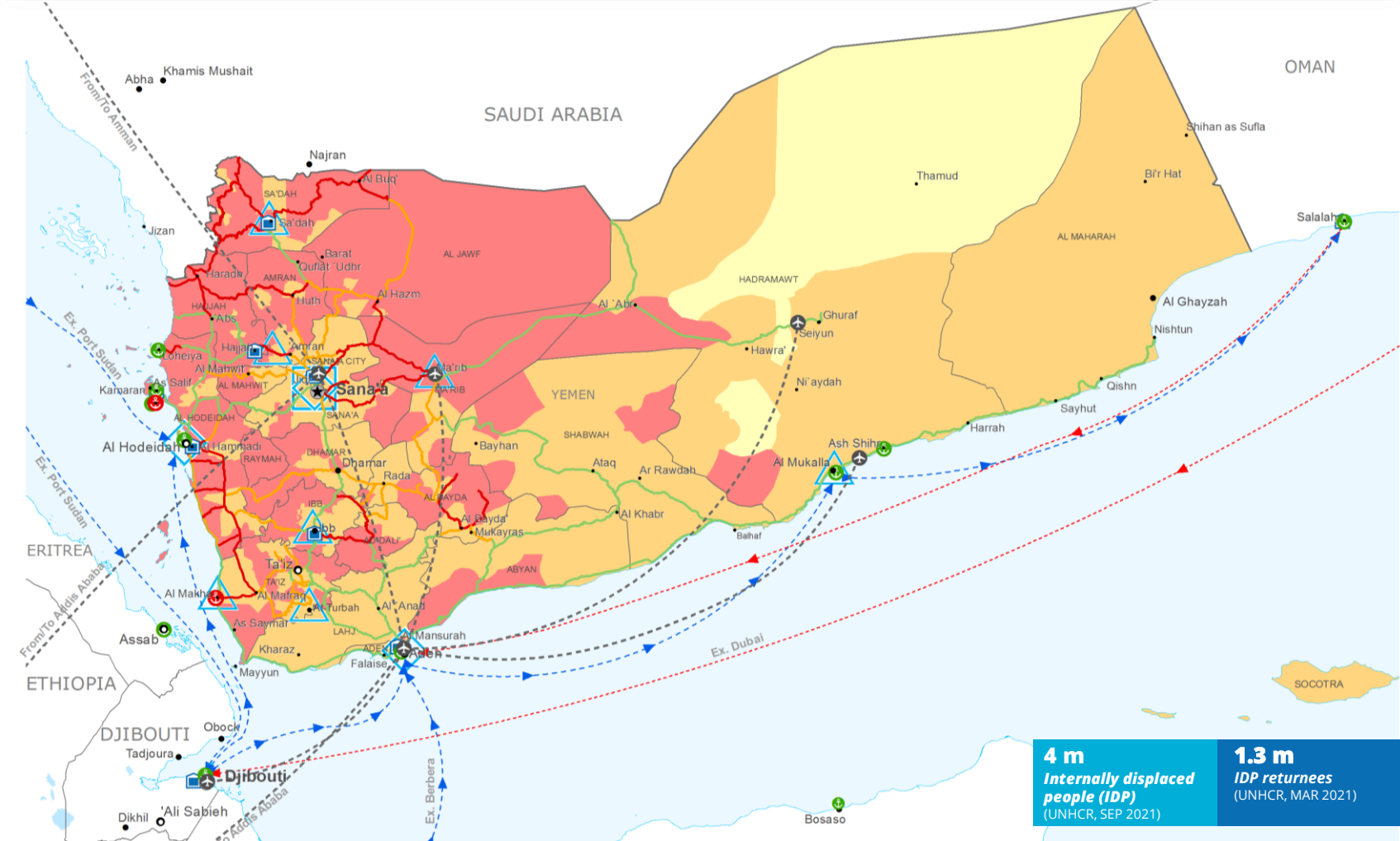
## UN HUMANITARIAN AIR SERVICES (UNHAS)



**WFP LEVEL 3 EMERGENCY SINCE 03 JULY 2015**

SITUATION REPORT and COUNTRY BRIEF

\*Of the 12.9 million people targeted for food assistance under the Yemen ICSP, recently received funding has allowed WFP to scale up assistance to target 10 million people living in the most food insecure areas of the country with monthly assistance as of June 2021. The remaining 2.9 million people are receiving assistance on an alternate basis (assistance provided every other month to 1.1 million and 1.8 million people, respectively) owing to resource constraints, as advocacy efforts continue.



### Integrated Phase Classification Projection (Jan - Jun 2021)

<ul style="list-style-type: none"> <li>No data</li> <li>Minimal (Phase 1)</li> <li>Stressed (Phase 2)</li> <li>Crisis (Phase 3)</li> <li>Emergency (Phase 4)</li> <li>Famine (Phase 5)</li> </ul>	<ul style="list-style-type: none"> <li>Country Office</li> <li>Area Office</li> <li>Field Office</li> <li>Warehouse</li> </ul>	<ul style="list-style-type: none"> <li>Port Closed</li> <li>Port Operational</li> <li>Port with Restricted Access</li> </ul>	<ul style="list-style-type: none"> <li>UNHAS Connection</li> <li>UNHAS Route</li> <li>Supply Route Open</li> <li>Supply Route Closed</li> </ul>	<ul style="list-style-type: none"> <li>Road Open</li> <li>Road with Restricted Access</li> <li>Road Closed</li> </ul>	<ul style="list-style-type: none"> <li>IDP Camp</li> <li>Refugee Camp</li> <li>Refugee Center</li> </ul>	<ul style="list-style-type: none"> <li>National Capital</li> <li>Major Town</li> <li>Intermediate Town</li> <li>Small Town</li> <li>International Boundary</li> <li>Governorate Boundary</li> </ul>
---	--	--	---	---	--	---

Sources: WFP, UNGIWG, GAUL, GLCSC, OCHA, UNHCR.  
 The designations employed and the presentation of material in the map(s) do not imply the expression of any opinion on the part of WFP concerning the legal or constitutional status of any country, territory, city or sea, or concerning the delimitation of its frontiers or boundaries. © World Food Programme 2021.