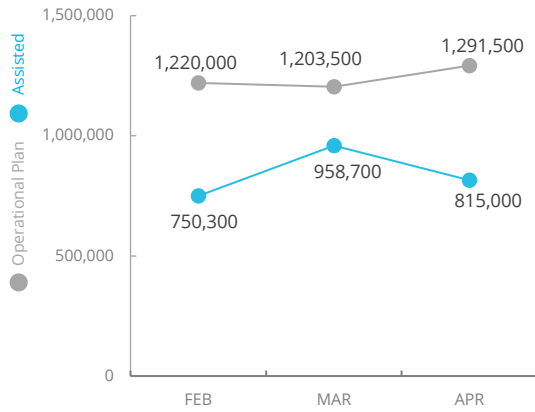


# Democratic Republic of Congo

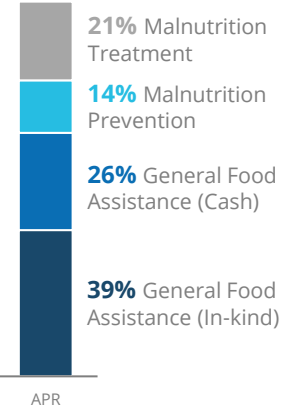
## PEOPLE ASSISTED

DR Congo Country Strategic Plan

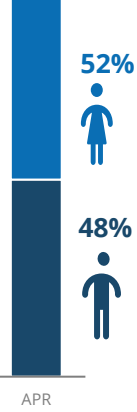


## OPERATIONAL PROFILE

By Activity



By Sex



## COVID-19 OPERATIONAL IMPACT

Status WFP Response adjusted

- ✔ Extended distribution timelines
  - ✔ Crowd control and social distancing measures at distribution sites
  - ✔ Mandatory hygiene measures at distribution sites
  - ✔ School feeding through take home rations
- ✔ Ongoing   
 ! Partially Suspended   
 ✘ Suspended

## FUNDING

DR Congo Country Strategic Plan (CSP)  
June 2021 – November 2021

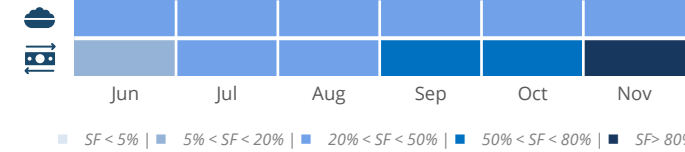
Net funding requirements  
**US\$128m**

2021 LEVEL 3 RESPONSE Requirements US\$662.5m

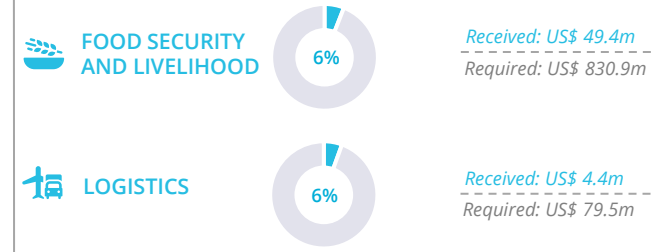
## AVERAGE MONTHLY FUNDING REQUIREMENTS (US\$)

**Food: 29.7m**      **Cash: 17.0m**

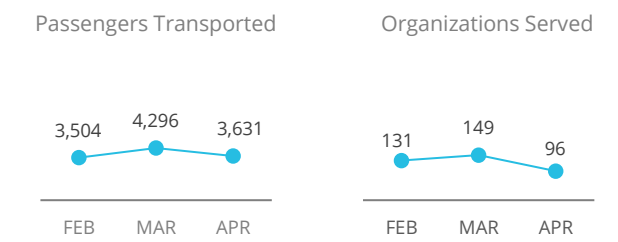
### EXPECTED SHORTFALLS



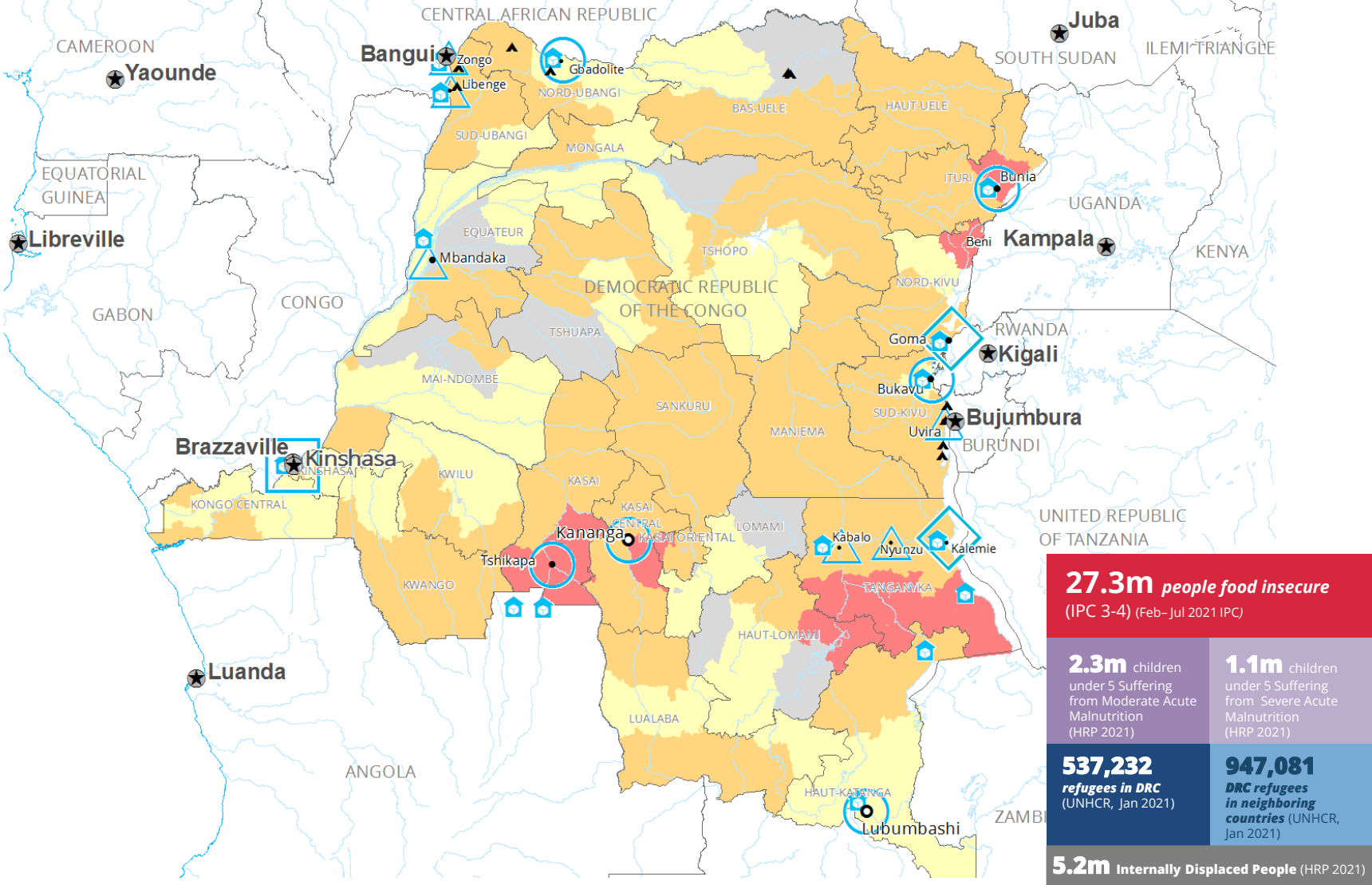
## WFP-LED AND SUPPORTED CLUSTERS



## UN HUMANITARIAN AIR SERVICES (UNHAS)



## WFP LEVEL 3 EMERGENCY



Sources: WFP, UNGIWG, GAUL, GLCSC, OCHA, UNHCR, IPC. The designations employed and the presentation of material in the map(s) do not imply the expression of any opinion on the part of WFP concerning the legal or constitutional status of any country, territory, city or sea, or concerning the delimitation of its frontiers or boundaries. © World Food Programme 2021.