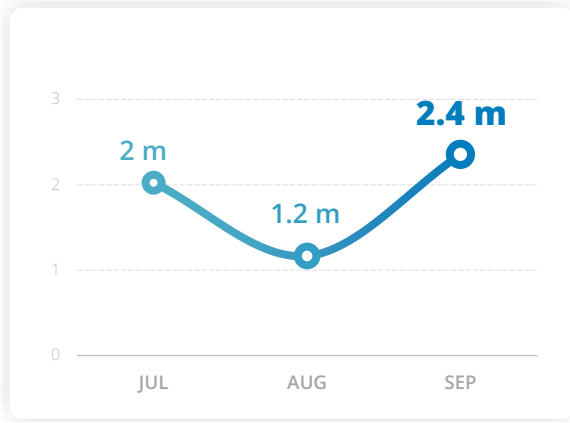


PEOPLE ASSISTED

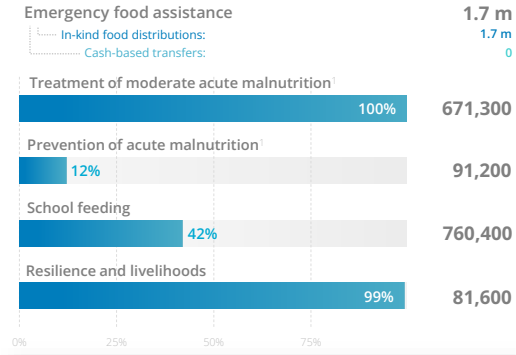
All activities



Estimated unique beneficiaries assisted across all WFP activities. Excludes overlap between activities.

OPERATIONAL ACHIEVEMENTS

By activity



People assisted across all activities: **2.4 m**

Monthly assistance figures are estimates and subject to change upon final beneficiary reconciliation. Percentages indicate reach against monthly operational plan. ¹Nutrition figures are based on commodity dispatches.

Source: WFP Yemen, September 2024

TOP DONORS

By confirmed contributions (2024)

- United States of America
- European Commission
- United Kingdom
- Republic of Korea
- Germany

Source: WFP, as of 30 September 2024

FUNDING

Yemen interim country strategic plan (2023 - 2025) [MORE DETAILS](#)

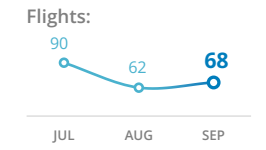
6-MONTH NET FUNDING REQUIREMENT:

US\$ 448 m

October 2024 → March 2025

UNHAS

United Nations Humanitarian Air Service

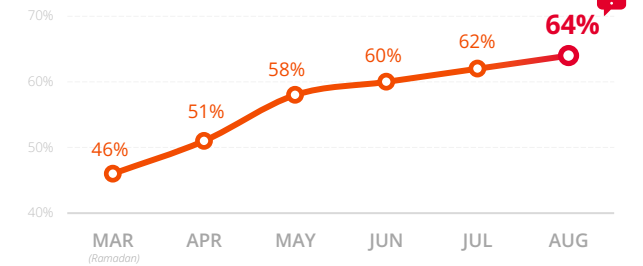


Source: UNHAS Yemen, September 2024

Source: UNHAS Yemen, September 2024

FOOD INSECURITY

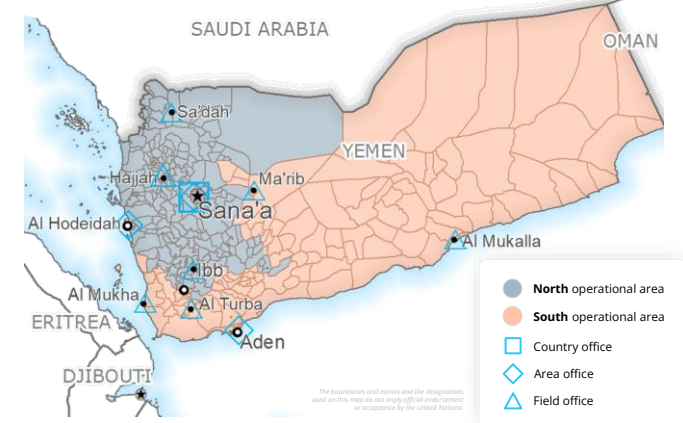
Inadequate food consumption (FCS) [MORE DETAILS](#)



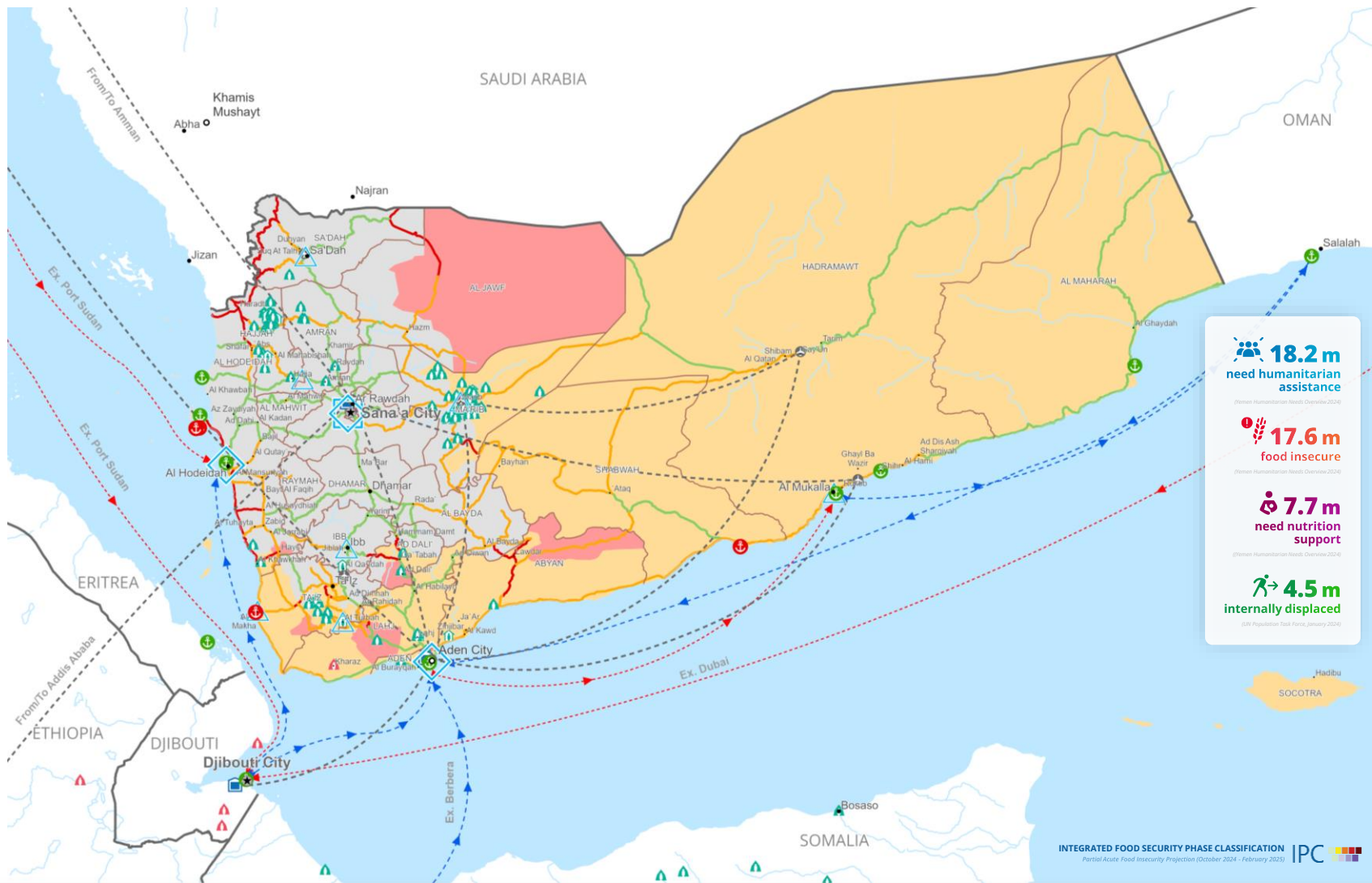
Source: WFP Yemen Research, Assessment and Monitoring, September 2024

OPERATIONAL PRESENCE

WFP Yemen



The boundaries and names and the designations used on this map do not imply WFP endorsement or acceptance by the United Nations.



INTEGRATED FOOD SECURITY PHASE CLASSIFICATION IPC
Partial Acute Food Insecurity Projection (October 2024 - February 2025)

<ul style="list-style-type: none"> No data Minimal (Phase 2) Stressed (Phase 2) Crisis (Phase 3) Emergency (Phase 4) Catastrophe (Phase 5) 	<ul style="list-style-type: none"> Country Office Area Office Field Office Warehouse 	<ul style="list-style-type: none"> Port Closed Port Operational Port with Restricted Access UNHAS Connection UNHAS Route Supply Route Open Supply Route Closed 	<ul style="list-style-type: none"> Road Open Road with Restricted Access Road Closed IDP Camp IDP Center IDP Location Refugee Camp Refugee Center Refugee Location National Capital Major Town Intermediate Town Small Town
--	--	---	--

Produced by the WFP Yemen country office in coordination with the WFP Operations Centre (OPSCEN) and the WFP Regional Bureau for the Middle East, Northern Africa, and Eastern Europe. The dashboard is based on best available information at the time of production, and information on future dashboards may vary as new information becomes available.

The boundaries and names and the designations used on these maps do not imply official endorsement or acceptance by the United Nations.

