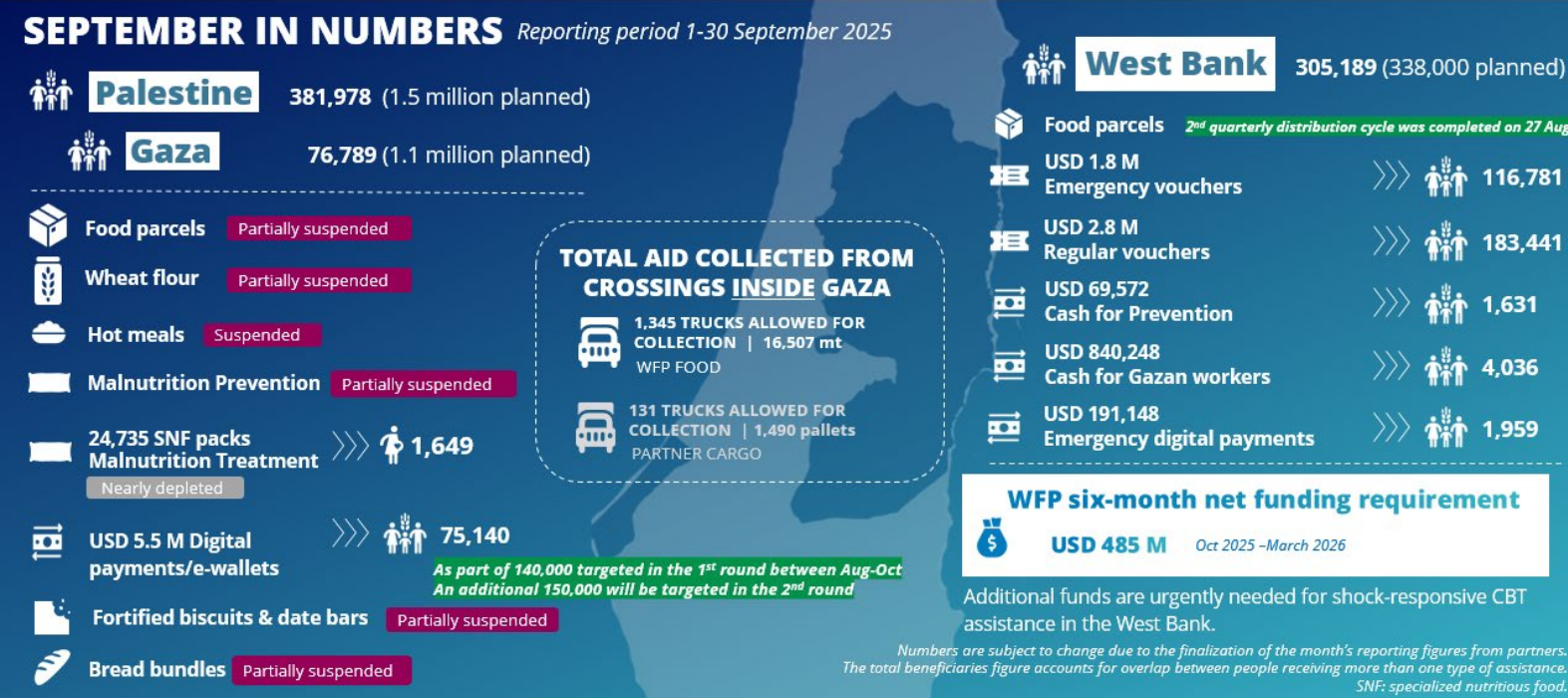


# WFP PALESTINE EMERGENCY RESPONSE

## External Situation Report 67

## HIGHLIGHTS

- Northern Gaza remains cut off from aid following the closure of Zikim crossing since 12 September. While military operations have caused mass displacement, primarily from the north to south, many of the most vulnerable remain trapped without means to leave to designated evacuation areas. Road restrictions and continuous bombardment hamper humanitarian operations to reach those most in need.
- Despite severe access constraints, insecurity, and incidents of looting alongside its convoys, WFP successfully transported more than 16,500 mt of food into Gaza in September. This included critical nutrition supplies to support the scale-up of malnutrition prevention and treatment, which were safely delivered to cooperating partners.
- WFP's sustained convoy deliveries helped stabilize food prices and improve household access to meals, with monitoring indicating that the share of households with a poor Food Consumption Score significantly declined from 88 percent in July 2025 to 46 percent in September, reflecting improved food access and dietary intake in Gaza.
- Despite improved access to staple foods, Gaza's population continues to face unbalanced, nutrient-deficient diets, with limited availability of meat, vegetables, fruits, and dairy. While diets have slightly improved since August, a full ceasefire and unrestricted entry of aid and commercial goods remain essential to save lives and alleviate suffering.
- In September, WFP reached over 75,000 vulnerable people in Gaza with digital payments, ensuring support through e-wallets to displaced families lacking in-kind food aid and improving their short-term food access. The next round will target an additional 150,000 people, prioritizing families displaced from the north amid ongoing hostilities.



## SITUATION UPDATE

- Mass displacement, collapsing shelter options, worsening food insecurity, and severe disruptions to supply routes** have created a crisis of survival for hundreds of thousands in Gaza. The shrinking space for humanitarian delivery, coupled with ongoing hostilities and attacks on aid infrastructure, further strain and place the remaining lifelines for civilians at risk.
- Nearly 397,300 displacement movements were recorded crossing from north to south since mid-August**, with families sleeping on the streets or in makeshift shelters. Israel has blocked northbound traffic on the main road out of Gaza City, preventing anyone from returning and urging the remaining hundreds of thousands of residents to evacuate southwards.
- After a sustained increase in aid deliveries since 27 July, aid crossing into Gaza declined sharply with the closure of the Zikim crossing in mid-September, cutting off northern areas from assistance.** According to the Ministry of Health in Gaza, as of 1 October, 455 malnutrition-related deaths, including 151 children, were [documented](#) since October 2023.
- WFP's latest Market Monitor reported** that in September, food prices in Gaza remained largely stable, with wheat flour selling at 7–9 ILS/kg or 150–180 ILS per 25 kg bag depending on the area. However, digital payment fees remain high, adding about 35 percent to costs. Market access tightened with the Zikim crossing closure, leaving Kissufim and Karam Abu Salem/Kerem Shalom (KS) crossings as the only remaining entry points for aid and commercial goods.

## WFP OPERATIONS (1-30 Sep)

### General Food Assistance in Gaza

- WFP remains unable to deliver General Food Assistance in Gaza through regular distribution channels. While some commodities are entering, they have not reached WFP distribution points due to persistent insecurity and access restrictions. WFP teams are actively working to clear roads and are exploring alternative transport options to ensure that life-saving assistance reaches its intended destinations.
- Under the **malnutrition treatment programme**, partners reached 1,649 malnourished pregnant and breastfeeding women and girls (PBWG) in September with lipid-based nutrient supplements – large quantities (LNS LQ). Following two delivery trials on 28 and 30 September, and a third one on 2 October, WFP successfully delivered 157 mt of LNS LQ (treatment) and LNS MQ (medium quantities for prevention) to Deir al-Balah, using four closed box-trucks via a convoy through KS crossing, with the target of reaching 325,000 PBWG monthly. **With this milestone, WFP has now established a working model for its malnutrition treatment and prevention programmes.**
- In September, **WFP reached 75,140 people with e-wallets, progressing toward its target of 140,000 since the resumption of digital assistance on 26 August.** Assistance prioritizes households with limited access to in-kind food and displaced families from northern Gaza, with each household receiving ILS 1,250 (USD 372) per month to cover basic needs. A second round will soon begin, targeting a further 150,000 people, primarily families in or displaced from the north.

### General Food Assistance in the West Bank

- In September, 116,781 people received **emergency food vouchers as part of WFP's shock response plan.** WFP's **regular voucher programme** supported 183,441 vulnerable people (ILS 50/USD 14.5 per person) to improve food security and dietary diversity.
- Through the **Cash for Prevention Programme aimed at maternal and child health**, 1,631 women received cash top-ups (ILS 128/USD 37.12 per woman) to meet higher nutritional needs.
- 4,036 Gazan workers** stranded in the West Bank received **cash assistance** to enable them to purchase nutritious food from local shops.
- In parallel, 1,959 people (395 households) **displaced by military incursions across the West Bank received a second round of cash transfers** in their e-wallets (ILS 1,680/USD 450 per household) to help meet essential needs following the shock.

## SUPPLY CHAIN

- Kissufim has been open since 15 September as an alternative entry point to Zikim crossing.** However, it

does not provide adequate access to northern Gaza, due to its limited capacity and insecurity which disrupt cargo collection and prevent additional deliveries.

- Between 1 and 30 September, **WFP delivered 932 trucks** (20,012 mt of food) **to crossing platforms** via the various corridors. During the same period, **1,345 WFP trucks** (16,507 mt of food) **were collected inside Gaza from the crossings.**



## CLUSTERS AND COMMON SERVICES

### Food Security Sector (FSS)

- As of 28 September, partners delivered **658,000 meals through 137 kitchens, with northern outputs dropping by 71 percent** (49,000 meals vs 170,000 mid-September). This decline was partially offset by relocations and expanded operations in the south/central. Since 10 September, partners have also been distributing 10,000 loaves of bread daily to newly displaced people moving south.
- Bread production capacity in Gaza City remains severely limited. **As of 27 September, approximately 50 communal ovens across 15 shelters are still operating with partner support, enabling 2,700 households to bring their dough and bake their bread free of charge.** However, a 2 kg bundle of bread remains unaffordable for most families, selling for over ILS 30/USD 9, compared with just ILS 2/USD 0.30 at WFP supported bakeries in early 2025.

### Logistics Cluster (LC)

- The Logistics Cluster liaised with 16 partners for the daily truck manifest. Of the 2,760 trucks submitted for Israeli authorities' approval, 55 percent offloaded food, nutrition, health, shelter, and WASH items, at crossings into Gaza.
- During September, the Cluster facilitated the collection of 1,490 pallets of food and shelter items from the Erez West (Zikim) and KS entry points, on behalf of five partners.
- The Cluster facilitated access to two Government-to-Government (G2G) convoys to Erez West (Zikim) from Jordan transporting food items on behalf of one partner, and seven Back-to-Back (B2B) convoys to KS with WASH, health, and shelter items on behalf of five partners.
- Following the closure of the Jordan Corridor after the 18 September security incident,** B2B convoys resumed on 29 September with trucks offloaded at KS. However, G2G convoys remain suspended.

THANK YOU TO OUR PARTNERS FOR THEIR CONTINUED SUPPORT