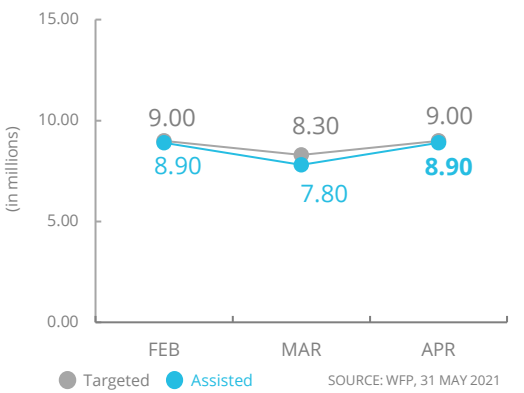


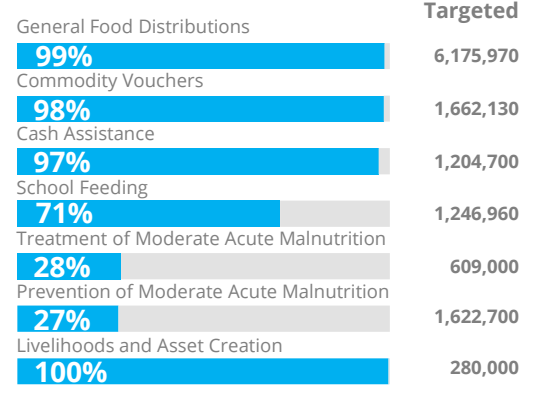
## PEOPLE ASSISTED\*

Yemen Interim Country Strategic Plan (ICSP)

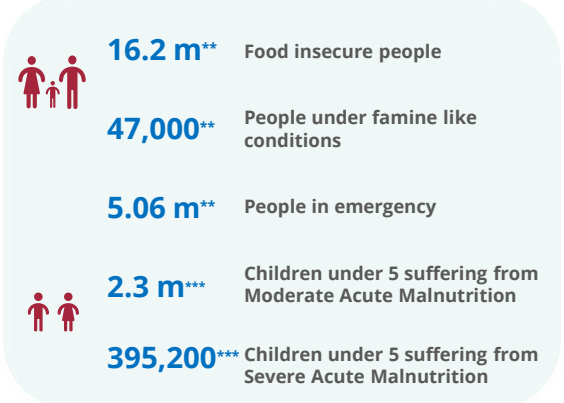


## OPERATIONAL PROFILE

By Activity (April)



## PEOPLE IN NEED

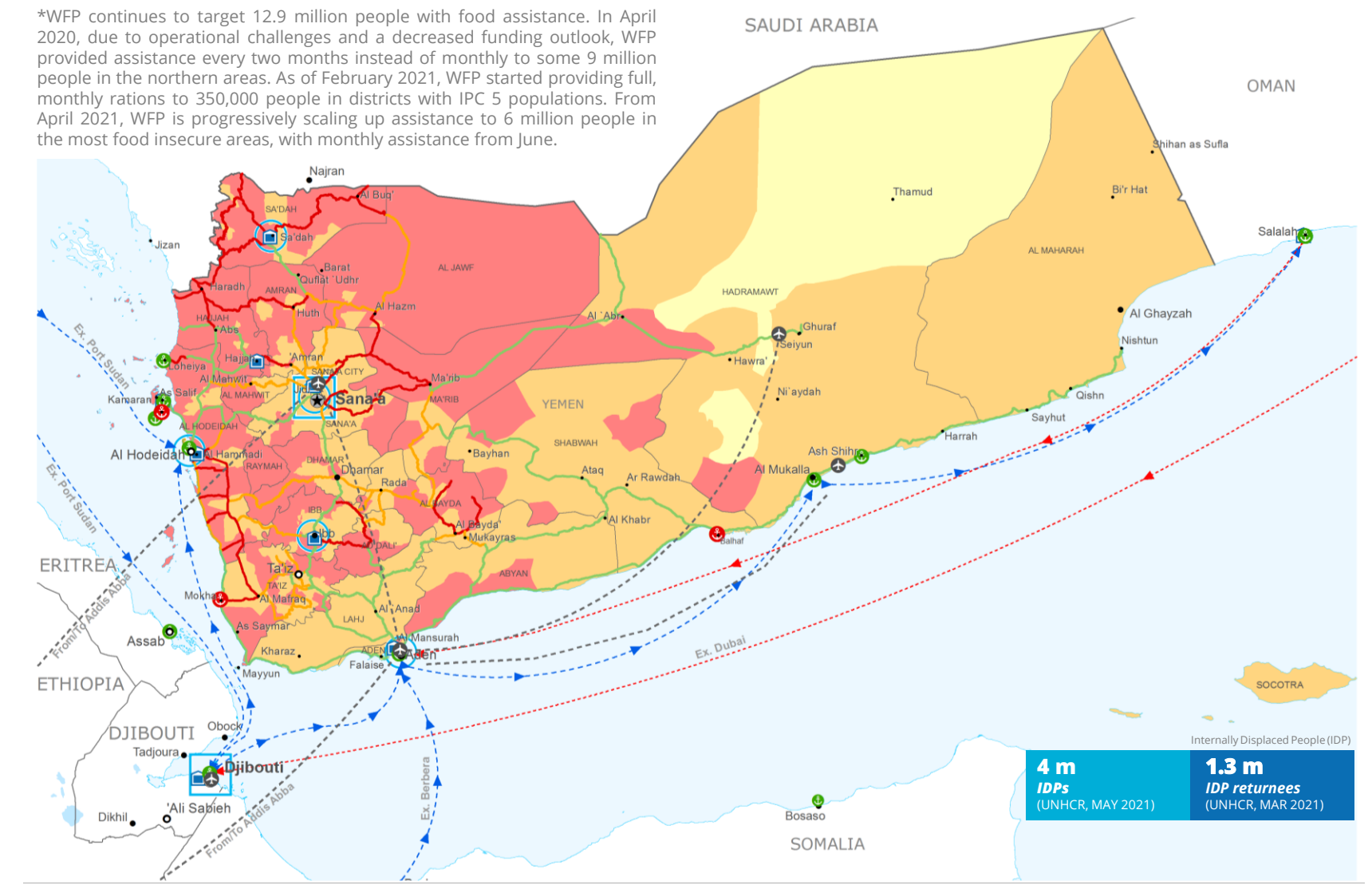


## FUNDING

Yemen Interim Country Strategic Plan (ICSP)

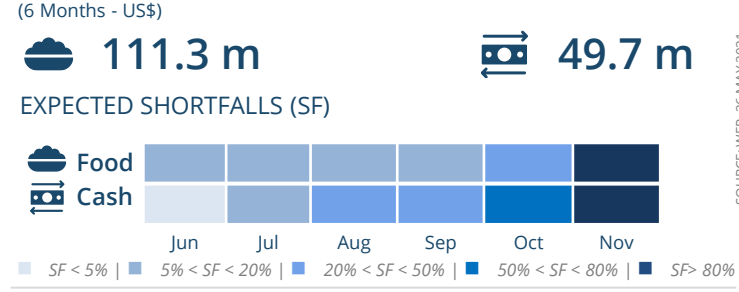


\*WFP continues to target 12.9 million people with food assistance. In April 2020, due to operational challenges and a decreased funding outlook, WFP provided assistance every two months instead of monthly to some 9 million people in the northern areas. As of February 2021, WFP started providing full, monthly rations to 350,000 people in districts with IPC 5 populations. From April 2021, WFP is progressively scaling up assistance to 6 million people in the most food insecure areas, with monthly assistance from June.

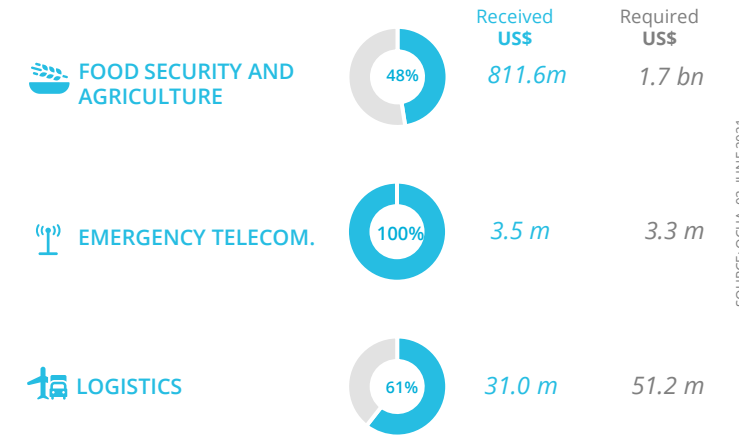


## AVERAGE MONTHLY FUNDING REQUIREMENTS

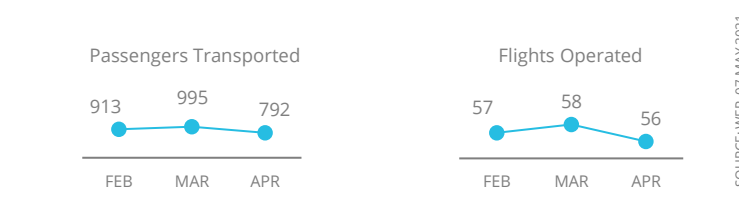
(6 Months - US\$)



## WFP-LED AND SUPPORTED CLUSTERS



## UN HUMANITARIAN AIR SERVICES (UNHAS)



### Integrated Phase Classification Projection (Jan - Jun 2021)

<ul style="list-style-type: none"> <li>No data</li> <li>Minimal (Phase1)</li> <li>Stressed (Phase2)</li> <li>Crisis (Phase3)</li> <li>Emergency (Phase 4)</li> <li>Famine (Phase5)</li> </ul>	<ul style="list-style-type: none"> <li>Country Office</li> <li>Field Office</li> <li>Warehouse</li> </ul>	<ul style="list-style-type: none"> <li>Port Closed</li> <li>Port Operational</li> <li>Port with Restricted Access</li> </ul>	<ul style="list-style-type: none"> <li>UNHAS Connection</li> <li>UNHAS Route</li> <li>Supply Route Open</li> <li>Supply Route Closed</li> </ul>	<ul style="list-style-type: none"> <li>Road Open</li> <li>Road with Restricted Access</li> <li>Road Closed</li> </ul>	<ul style="list-style-type: none"> <li>IDP Camp</li> <li>Refugee Camp</li> <li>Refugee Center</li> </ul>	<ul style="list-style-type: none"> <li>National Capital</li> <li>Major Town</li> <li>Intermediate Town</li> <li>Small Town</li> <li>International Boundary</li> <li>Governorate Boundary</li> </ul>
---	---	--	---	---	--	---

Sources: WFP, UNGIWG, GAUL, GLCSC, OCHA, UNHCR.

The designations employed and the presentation of material in the map(s) do not imply the expression of any opinion on the part of WFP concerning the legal or constitutional status of any country, territory, city or sea, or concerning the delimitation of its frontiers or boundaries. © World Food Programme 2020.

**WFP LEVEL 3 EMERGENCY SINCE 03 JULY 2015**

SITUATION REPORT and COUNTRY BRIEF