



World Food Programme

SAVING LIVES
CHANGING LIVES



WFP LEBANON

SITUATION REPORT – November 2022

WFP partnered with the Lebanese Reforestation Initiative to plant 150,000 new seedlings in Yammouneh, Bekaa.
Photo: WFP/Ziad Rizkallah

IN NUMBERS



3,563,300 people in need of assistance



1.8 m people assisted in November 2022



USD 23m cash-based transfers made



4,600 MT of food distributed

SITUATION UPDATE

- The price of the food Survival Minimum Expenditure Basket (SMEB) reached LBP 1.08 million per person/month, in October a 10 percent increase from September. The full SMEB, including food and other essential needs, amounted to LBP 10.8 million per household in October.
- Overall monthly inflation was 14.6 percent in October and annual inflation of 158 percent according to the Consumer Price Index of the Central Administration of Statistics. This has been driven by steady increases in food and energy prices since late 2021 following exchange rate depreciation and the lifting of subsidies. Meanwhile, despite uncertainties around the conflict in Ukraine, global food prices have recently dropped to near pre-Ukraine crisis levels.
- Lebanon's state power company Electricite du Liban (EDL) announced price increase for the first time since the 1990s. Electricity will be priced at 10 cents per kilowatt-hour (kWh) for the first 100 kWh consumed, and 27 cents per kWh for consumption above that. New power prices will be calculated in Lebanese pounds at the Sayrafa platform exchange rate (currently LBP 30,800/USD) with collection starting February 2023.

HIGHLIGHTS

- The WFP Country Strategic Plan 2023 – 2025 (CSP) for Lebanon was approved during the Second Annual Session of the Executive Board in November. The new CSP focuses on sustaining its lifesaving crisis response and support for social safety nets and livelihoods, ensuring the essential needs of vulnerable Lebanese and refugees, while also supporting the Government to build a stronger future through sustainable social assistance and food systems. Key donors and stakeholders expressed agreement with the CSP and indicated their continued support to operations in Lebanon.

WFP RESPONSE



Cash Assistance for Refugees

- In November, WFP provided unconditional cash assistance to 1,050,000 refugees through 3 modalities:
 - *Multipurpose Cash* for food and other essential needs redeemable at ATMs: 230,000 Syrian refugees
 - *Food e-cards* for food needs redeemable at WFP-contracted shops: 355,000 Syrian refugees
 - *Cash-for-Food* for food needs redeemable at ATMs or shops: 460,000 Syrian refugees and 5,000 refugees of other nationalities.
- UNHCR and WFP completed the annual identification of Syrian refugee families who will receive cash assistance for food and basic needs in 2023. Inclusion in the programme was determined based on the estimated economic vulnerability of Syrian refugee families using an updated Proxy Means Testing (PMT) targeting formula. The PMT was complemented by the inclusion of specific demographic profiles prioritized for assistance to mitigate protection issues. As both UNHCR and WFP forecasted to receive less funding from donors in 2023, coverage of assistance will decrease from 90 percent currently to around 77 of the Syrian refugee population starting January 2023. Coverage could be expanded only if funding prospects improve.

WFP RESPONSE



Economic Crisis Response for Lebanese

- WFP supported 299,000 vulnerable Lebanese individuals (77,900 households) with food parcels in November with distributions in all 26 districts across Lebanon.
- A new food basket of 11 commodities in smaller quantities will be distributed starting in early 2023. The food ration remains tailored to household size and is now sufficient to cover 61 percent of the total energy requirements of each individual, as people seek fresh food such as fruits, vegetables, and dairy to meet the rest of their caloric needs.



School Meals

- Over 16 school feeding days WFP provided over 1 million in-school snacks to 70,000 Syrian and Lebanese students in 105 public schools across Lebanon. WFP resumed its regular school meals programme with the start of the new academic year in October. This includes 4,900 students in 6 schools who received sandwiches and fruits/vegetables prepared by women participating in the School Kitchens initiative.
- The first round of vegetable oil distribution as a take-home ration for the academic year 2022-2023 was launched in November in 99 schools across Lebanon for 60,000 children who received 2 litres of sunflower oil each.



Livelihoods

- In November, 2,730 Syrian and Lebanese individuals participated in asset creation and capacity building projects and received cash transfers that benefitted a total of 14,000 people. WFP planted 62,800 trees in 92 hectares, opened and rehabilitated 27 km of hiking trails, and protected more than 275 hectares from risks of fire. These projects aim to enhance natural resource management and improve farming efficiency.
- Under the Food System Challenge, WFP and its partner Berytech started supporting 9 new small and medium enterprises after a 4-month period of needs assessments and planning. The business transformation packages developed include capital, assets, technical assistance, and operational support.



Support to Social Protection Programmes

- WFP assisted 355,000 Lebanese individuals (63,300 families) through the National Poverty Targeting Programme (NPTP). The inclusion of 10,000 households into the NPTP is awaiting results of deduplication with applicants to the Emergency Social Safety Net (ESSN). Verification visits for 18,000 households to complete the NPTP scale-up (target of 75,000 households) is also pending the deduplication process with the ESSN.
- As of November, WFP delivered payments to 384,000 Lebanese individuals (81,700 households) on behalf of the Government for the Emergency Social Safety Net (ESSN).



MONITORING

- Following a positive trend, 74 percent of monitoring visits to ATMs noted no crowds. However, some tensions between queuing beneficiaries and other customers were observed during 3 percent of the visits.



GENDER, PROTECTION & ACCOUNTABILITY TO AFFECTED POPULATIONS (AAP)

- WFP received 65,400 claims in November through its call centre. The call centre received significantly more calls from Syrian refugees following the announcement of the targeting results for the 2023 cycle and the launch of the grievance redress mechanism (GRM). Half of the claims received in November were to request information on the targeting SMSs received and the GRM, with 9,000 GRM applications submitted through the call centre. 97 percent of claims were resolved as of the end of November.



SUPPLY CHAIN & RETAIL

- WFP contracted 2 additional local food suppliers (4 in total) to engage the local market and receive more competitive prices for the in-kind operation.
- In preparation for the new re-targeting results which affect the allocation of people receiving food e-card assistance, a gap analysis study was conducted to ensure that shops will be located in appropriate locations in 2023. As a result, shop assessments will take place in December in underserved areas and WFP is in the process of signing a new supermarket chain with 18 branches to cover critical areas.



ADVOCACY, COMMUNICATIONS & PARTNERSHIPS

- On November 8, a delegation from the European Union Directorate-General for Neighbourhood and Enlargement Negotiations (DG NEAR) visited WFP operations in Zahle. The delegation included representatives from DG Near Brussels and the European Union in Lebanon. The EU had the opportunity to visit Syrian households who receive WFP's multipurpose cash assistance, learn about their needs and challenges as well as overall programme satisfaction. DG Near is one of WFP Lebanon largest donors, providing vital support to Syrian refugees and vulnerable Lebanese.
- On November 9, WFP received USAID Administrator, Samantha Power, accompanied by US Ambassador to Lebanon H.E Dorothy C. Shea. The US delegation visited a family receiving in-kind assistance in Zahle and had the opportunity to learn more about the US-funded projects. During her stay in Lebanon Ms. Power announced more than USD 72 million in additional humanitarian assistance for Lebanon.



FOOD SECURITY AND AGRICULTURE SECTOR

- Between January and October 2022, 39 sector partners, including WFP, provided food assistance to 590,000 people and cash entitlements of USD 186 million and LBP 70 billion to 1.46 million people. In addition, 4,080 people benefitted from access to casual agricultural labour and 32,700 smallholder farmers received agricultural inputs and technical and financial support of USD 9.8 million.



FUNDING OVERVIEW

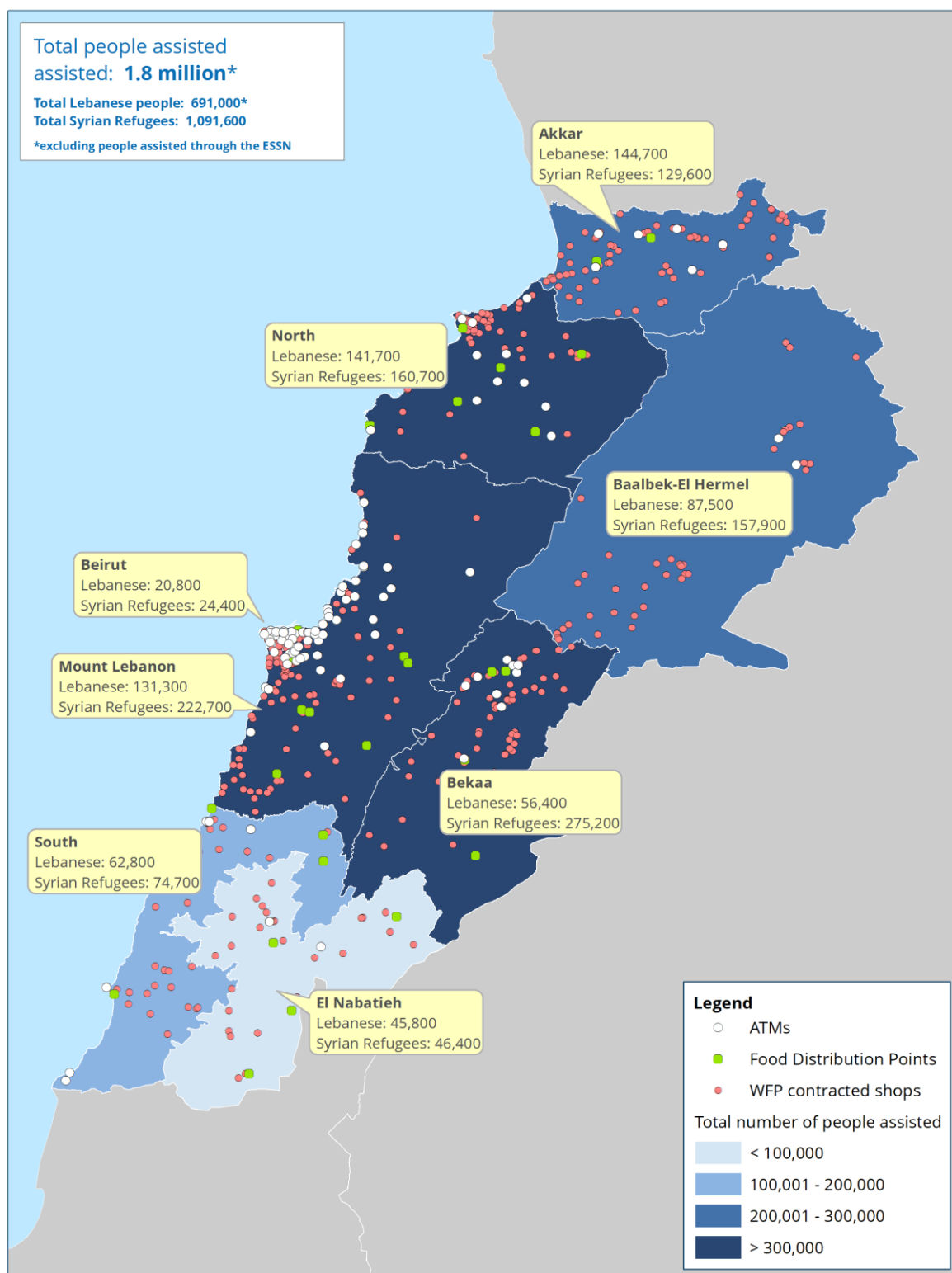


NET FUNDING REQUIREMENTS (DEC 2022 - MAY 2023)
US\$ 441 million



Lebanon

WFP Cash and In-kind Assistance for Refugees and Lebanese – November 2022



Donors

Australia, Austria, Canada, Cyprus, European Commission, France, Germany, Ireland, Italy, Japan, Lebanon's Presidency of the Council of Ministers, Lebanon Humanitarian Fund, Norway, Poland, Private Donors, Republic of Korea, Russia, Switzerland, UN CERF, United Kingdom, USA