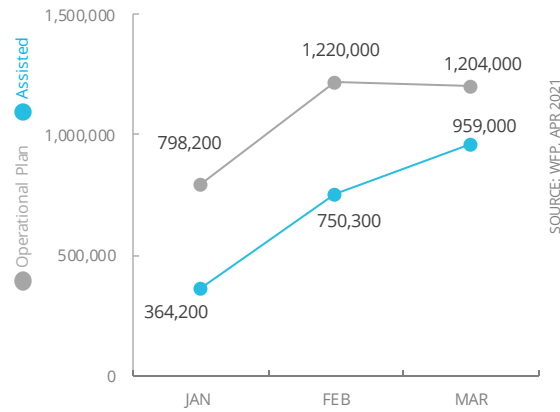


# Democratic Republic of Congo

## PEOPLE ASSISTED

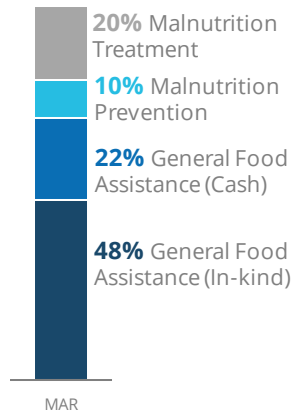
### DR Congo Country Strategic Plan



SOURCE: WFP, APR 2021

## OPERATIONAL PROFILE

### By Activity



## COVID-19 OPERATIONAL IMPACT

### Status WFP Response adjusted

- Extended distribution timelines
- Crowd control and social distancing measures at distribution sites
- Mandatory hygiene measures at distribution sites
- School feeding through take home rations

✔ Ongoing 
 ! Partially Suspended 
 ✘ Suspended

SOURCE: WFP, APR 2021

## FUNDING

DR Congo Country Strategic Plan (CSP)  
May 2021 – October 2021

Net funding requirements  
**US\$130m**

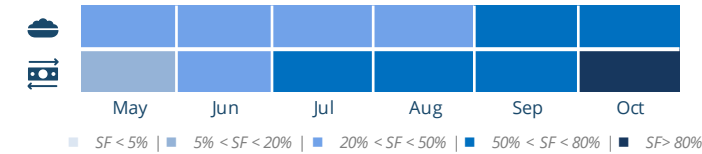
2021 LEVEL 3 RESPONSE  
Requirements US\$662.5m

SOURCE: WFP, APR 2021

## AVERAGE MONTHLY FUNDING REQUIREMENTS (US\$)

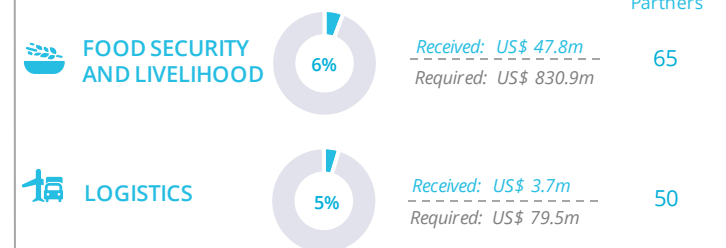
Food: 29.4m    Cash: 16.9m

### EXPECTED SHORTFALLS



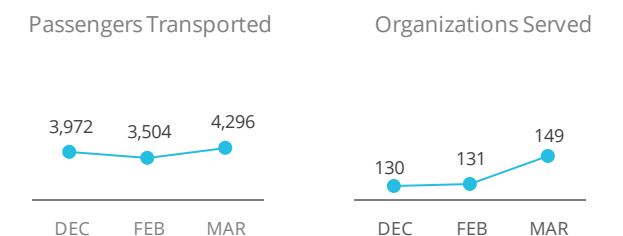
SOURCE: WFP, 06 APR 2021

## WFP-LED AND SUPPORTED CLUSTERS

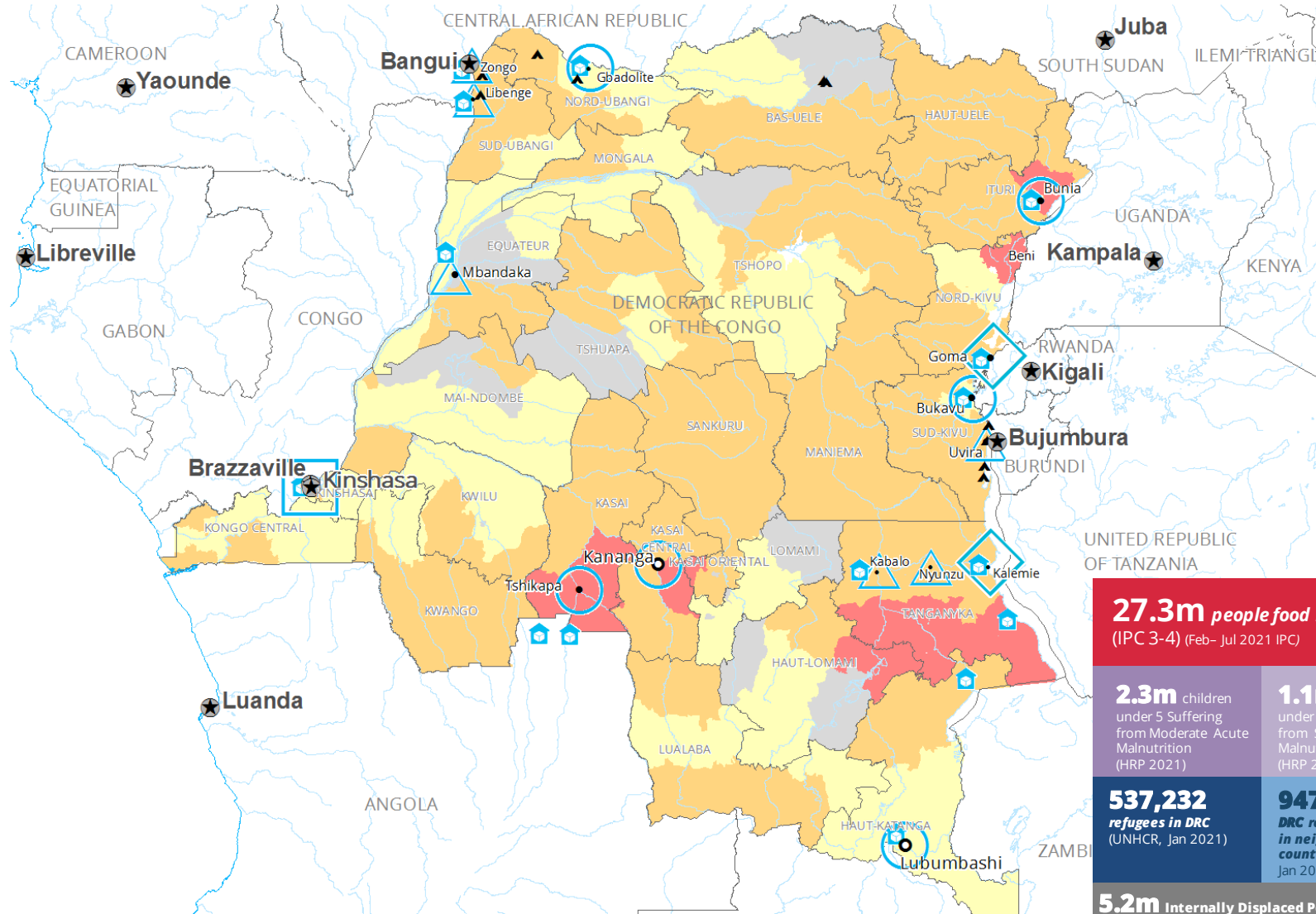


SOURCE: FTS, MAY 2021

## UN HUMANITARIAN AIR SERVICES (UNHAS)



SOURCE: WFP, APR 2021



**27.3m people food insecure**  
(IPC 3-4) (Feb– Jul 2021 IPC)

**2.3m** children under 5 Suffering from Moderate Acute Malnutrition (HRP 2021)

**1.1m** children under 5 Suffering from Severe Acute Malnutrition (HRP 2021)

**537,232** refugees in DR (UNHCR, Jan 2021)

**947,081** DRC refugees in neighboring countries (UNHCR, Jan 2021)

**5.2m** Internally Displaced People (HRP 2021)



Sources: WFP, UNGWG, GAUL, GLCSC, OCHA, UNHCR, IPC.

The designations employed and the presentation of material in the map(s) do not imply the expression of any opinion on the part of WFP concerning the legal or constitutional status of any country, territory, city or sea, or concerning the delimitation of its frontiers or boundaries. © World Food Programme 2020.

## WFP LEVEL 3 EMERGENCY

SITUATION REPORT and COUNTRY BRIEF

