

WFP PALESTINE EMERGENCY RESPONSE

External Situation Report 48

HIGHLIGHTS

- Four weeks since the ceasefire agreement, WFP and UNRWA have delivered over 65,000 mt of food into Gaza, of which over half was from WFP. This has enabled WFP to assist nearly 1 million people in Gaza with almost full food rations.
- Ensuring uninterrupted humanitarian access through all crossings is critical for a continued response at scale to reach those in need, while a stable ceasefire remains essential for sustained aid delivery, market recovery, and long-term rebuilding efforts.
- USD 254 million are required for the next 6 months of operations. WFP calls for increased commercial imports, cash liquidity in Gaza, and flexible funding to sustain operations—including in the West Bank.

FEBRUARY IN NUMBERS Reporting period 1-15 February 2025



Palestine 856,098 (1.4 million planned)

Gaza 679,816 (1.1 million planned)

West Bank 176,282 (338,000 planned)

USD 2.5 M vouchers >>> 174,958

USD 138,264 cash assistance >>> 1,324

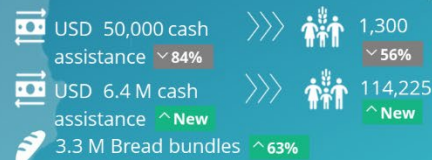
WFP six-month net funding requirement

USD 254 M March to August 2025

One month into the ceasefire



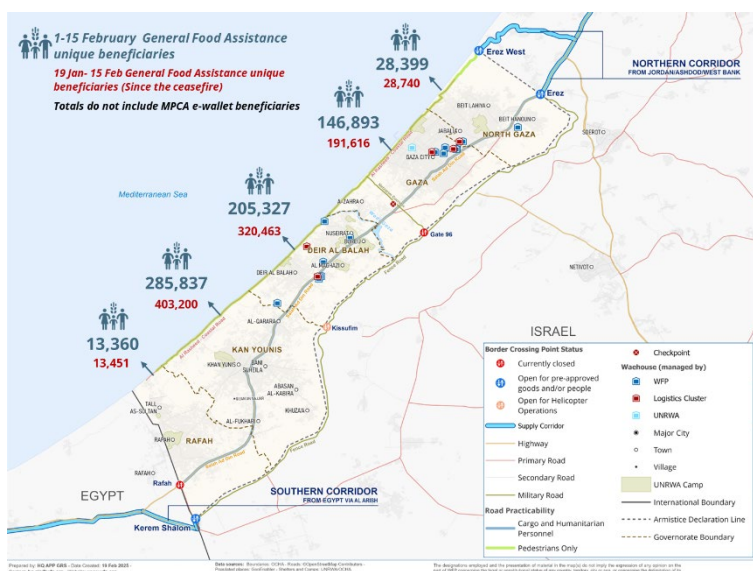
Beneficiaries reached
↑ **Percentage increase/decrease compared to October 2024, the month with the lowest cargo inflow into Gaza**



These numbers are subject to change due to the finalization of the month's reporting figures from partners. The total beneficiaries figure accounts for overlap between people receiving more than one type of assistance (LNS figures are not included). LNS: Lipid-based Nutritional Supplements. PBW: Pregnant and breastfeeding women and girls. CU5: Children under five. CBT: Cash-based Transfers.

SITUATION UPDATE

- Since the 19 January ceasefire, humanitarian access has improved, WFP and UNRWA delivered over 65,000 mt of food into Gaza, representing 34 percent of total aid. However, new Israeli restrictions that limit aid transport to box trucks from Ashdod, have slowed deliveries, which threatens food insecurity. Commercial supplies have improved, and prices have decreased, yet essentials remain inaccessible to vulnerable households due to reduced purchasing power. In the West Bank, military checkpoints continue to obstruct humanitarian convoys, deepening supply shortages.
- IDF military expansion of operations [continued](#) across the occupied West Bank amid rising tensions. Settlement expansion has accelerated, with Israel [issuing](#) tenders for nearly 1,000 new settler homes.



WFP OPERATIONS

General Food Assistance (GFA) in Gaza (Since the ceasefire 19 Jan – 15 Feb)

- **Since the ceasefire**, WFP provided general food assistance and cash-based transfers (CBT) to **one million* vulnerable people in Gaza**. However, limited cash liquidity and restricted financial access continue to hinder operations and the scale-up of cash and voucher assistance. **The total beneficiaries figure accounts for overlap between people receiving more than one type and duration of assistance. Monthly distribution figures are estimates and subject to change pending final beneficiary reconciliation.*
- General Food Distribution (GFD): WFP is delivering almost full rations covering 75 percent of monthly household needs—**two ready to eat (RTE) food parcels and one 25kg wheat flour bag per household**—which marks a major improvement from pre-ceasefire reductions.
- **25 bakeries are operational across Gaza at full capacity**: 1 in North Gaza, 8 in Gaza City, 9 in Khan Younis, 6 in Deir al Balah, and 1 in Rafah—**collectively, they produce five times more bread than pre-ceasefire levels, with some running three shifts, up to 22 hours a day**. A total of 3.3 million bread bundles have been produced, with a portion distributed for free alongside hot meals. Additionally, over 90,000 bread bundles are supplied daily to 24 retail shops at a reduced price of USD 1 per bundle.
- WFP continues to provide **hot meals** through 63 kitchens across the Strip, prioritising hard-to-reach areas and those not covered by GFD. Kitchens are expanding in North Gaza and Rafah while others are relocating based on needs and population movement.
- WFP continued providing **lipid-based nutritional supplements (LNS)** to pregnant and breastfeeding women, girls, and children under five.
- This month, WFP plans to assist 30,000 households (150,000 people) in Gaza with USD 280 cash assistance via e-wallets. Nearly 23,000 households have received support so far.

GFA in the West Bank (1-15 February)

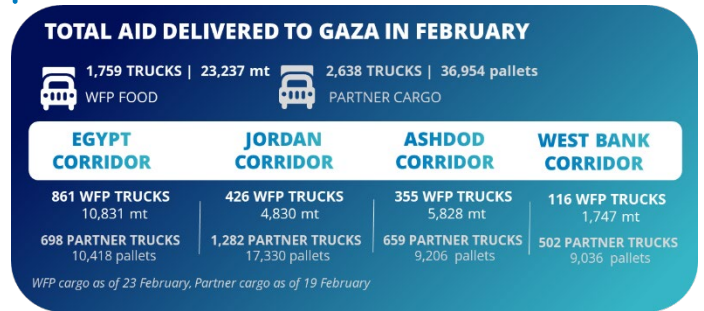
- WFP provided cash-based transfers (CBT) of 50 ILS (USD 14) per beneficiary to **nearly 175,000 vulnerable people**, totalling USD 2.5 million.
- To mitigate the impact of recent escalations, WFP is developing a shock response plan focused on food vouchers and cash, subject to funding availability.
- In Jenin, WFP, in coordination with cash actors, distributed a one-time cash transfer of 1,640 ILS (USD 447) to over **5,000 displaced people** outside the Refugee Camp to cover basic needs. So far, 93 percent have redeemed their entitlements, including some 1,300 in February.

Humanitarian Access and Capacity

- **West Erez/Zikim**: Receives commodities from the Jordan corridor for government convoys. **Erez**: Channels goods into northern Gaza via Israel, Ashdod, the Jordan corridor, and the West Bank. **Kerem Shalom**: Handles goods from Egypt, including fuel and gas trucks. **Kissufim**: WFP supported Jordanian authorities to deliver critical

medicines and infant formula through airbridge operations.

Supply chain



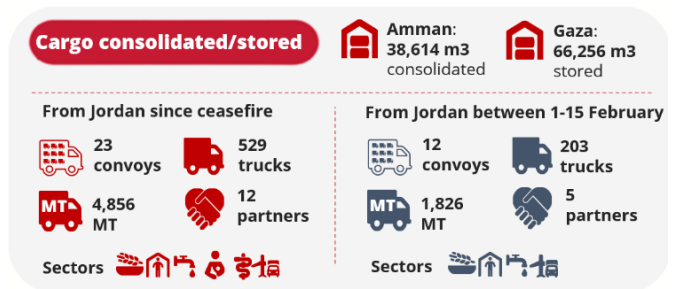
CLUSTERS AND COMMON SERVICES

Food Security Sector (FSS)

- Ahead of Ramadan in March, the sector aims to anticipate ad-hoc food distributions to better improve partners' planning.
- Four partner food distribution points have been re-established in North Gaza with efforts to expand coverage.
- Around 3,000 livestock holders in Rafah and Deir al Balah received 550 mt of animal feed, while 2 mt was distributed to a poultry farm in Khan Younis.

Logistics Cluster

- The new 3,500 pallet consolidation warehouse in Amman is now available to receive partners' cargo.
- The Logistics Cluster has secured three additional warehouses in northern Gaza, which expanded the storage capacity to a total of 5,350 m².



Emergency Telecommunications Cluster (ETC)

ETC is mitigating fuel shortages for sustained supplies to maintain critical communications services across Gaza.

ACCOUNTABILITY TO AFFECTED PEOPLE



THANK YOU TO OUR PARTNERS FOR THEIR CONTINUED SUPPORT