

WFP Democratic Republic of the Congo





November Situation Report #43 – 14 December 2022

Highlights

- **Eastern DRC:** In North Kivu, humanitarian partners estimate that over **450,000 people** have been displaced in Rutshuru and Nyiragongo since the onset of the fighting in March and the conflict has disproportionately affected women and children.
- In response to that crisis, WFP has assisted a total of **106,000 people**. In November, 82,000 internally displaced persons (IDPs) received 15-day rations and 11,000 received high energy biscuits, while in December, a second WFP scale-up benefitted 46,000 IDPs in Kanyaruchinya, Munigi and Buvira.

Situation Update

- WFP continues to face access challenges because of the insecurity in North Kivu and the poor road conditions during the rainy season. WFP’s regular pre-existing programmes to 100,000 people in the affected areas remain on hold, including emergency food assistance, school feeding programmes, nutrition activities and resilience-building initiatives.
- **Funding Needs:** WFP is stepping up its response to the ongoing conflict in the east and is planning to support 250,000 people with food and nutrition assistance until April 2023. To do that, US\$ 50.6 million is needed in addition to the US\$ 148.8 million for regular activities.
- **Pipeline Break:** WFP will face major food pipeline shortages in the first quarter of the new year, because food stocks of January and February 2023 are being consumed to respond to the current crisis, by both regular beneficiaries and additional people in eastern DRC in December 2022.

	26.4 m highly food-insecure people (51% female/49% male) (50% children/50% adults)
	26 provinces affected
	5.7 m people displaced (52% female/48% male) (58% children/42% adults)
	6.3 m people reached in 2021 (59% female/41% male) (61% children/39% adults)
Total 2022 funding requirements	US\$ 625.3 m
6-month Net Funding Requirements (December 2022 – May 2023)	
Food Assistance	US\$ 84.5 m
Nutrition	US\$ 30.4m
Other activities	US\$ 33.9m
Total	US\$ 148.8m

- **M-Kengela Report:** The current situation in North Kivu has triggered unparalleled demand for basic food commodities leading to shortages and causing a spike in the price of essential commodities. For October, the prices of maize flour, beans and cassava flour have risen by more than 10 percent compared to previous months. A comparative analysis of September and October demonstrates a seasonal increase in the average value of a food basket at the national level from US\$ 12.75 to US\$ 14.84. The seasonal increase has risen by 39 percent compared to the same period in 2021.

WFP Response

- Under the revised Country Strategic Plan 2021-2024, WFP continues its large-scale operation targeting **7.1 million** people with food, nutrition, and resilience support in 2022.



Food and Nutrition Assistance

- **Overview:** In November, WFP reached **1.3 million people** with in-kind, cash and nutrition assistance. WFP supported **471,000 people** with in-kind food distributions and reached **460,000 people** with cash-based transfers. Additionally, WFP assisted **433,000 children and pregnant and lactating women and girls** (PLW/Gs) with nutritious products to treat and prevent malnutrition.
- **Tanganyika:** In November, WFP assisted **301,000** people across all assistance modalities, from in-kind assistance, cash-based support, and nutrition treatment and prevention supplies. In-kind distribution reached **131,000 people**, including 369 Congolese returnees from the 29th convoy from Zambia. Since the beginning of the Congolese repatriation operation in July, over 10,100 returnees have been assisted with in-kind assistance. On 18 November, the office commenced distributing SCOPE cards, reaching 40,500 people in Kalenga and other health zones. Cash distributions reached **51,000 people**. However, resilience activities (cash for work) in Kabalo are still on hold pending the approval of the new agreement with the identified implementing partner. Additionally, WFP reached **118,000** children and (PLW/Gs) with malnutrition treatment and prevention supplies. The security situation remains volatile and unpredictable due to recurrent clashes between the DRC armed forces and various non-state armed groups, further inflamed by inter-community conflicts between the Twa and the Bantu. The office launched 16 days of activism against gender-based violence in Kabembe and sensitised 367 pupils (144 girls and 123 boys) on Prevention of Sexual Exploitation and Abuse (PSEA).
- **Kasai Central and Kasai Oriental:** WFP reached **202,000 people** across all assistance modalities – in-kind assistance, cash-based transfer and nutrition prevention and treatment. The double distribution of food (November-December 2022) is ongoing, and for November **57,000 people** received in-kind assistance. WFP faced challenges in reaching distribution sites due to poor road conditions. For cash transfers, WFP reached **79,500 people** in Bibaya and Tshilenge territory. Additionally, the Kananga office reached **65,000** children and (PLW/Gs) with malnutrition treatment and prevention supplies.
- **Kasai:** The Kasai office reached **243,000 people** with in-kind assistance, cash-based support and nutrition prevention and treatment supplies. Cash-based transfer reached **137,000 people**. The in-kind assistance double distribution covering November and December is ongoing, and for November, **48,000 people** received food assistance. Due to shortages, WFP will continue to distribute reduced rations of maize meal, oil, and pulses without salt in the Kamonia health zone. The endline data collection in Kitangwa (Mbuambua and Njinji health territories) health zone is still ongoing. On 23 November, WFP and FAO launched the 'Strengthening the Resilience of Smallholder Farmers in the Greater Kasai Region' project. The office is in the process of collecting additional data to validate the list of beneficiaries in Kamuesha. Additionally, **57,000** children and (PLW/Gs) received malnutrition treatment and prevention supplies. Moreover, 998 people (309 men and 696 women) in Luebo and Kakenge territories were sensitised on PSEA.
- **North Kivu:** WFP assisted **146,000 people** with in-kind assistance, cash-based support, and nutrition treatment supplies. WFP reached **57,000 people**, with in-kind assistance and is targeting 87,000 people throughout December. Cash assistance reached **33,000 people** in Masisi territory. Additionally, the Goma office reached **19,000** children and (PLW/Gs) with malnutrition treatment only. WFP reached a small population of people in need due to insecurity and bad road infrastructure. Consequently, over 175,000 people, including displaced and vulnerable families, did not receive WFP food assistance in November as planned. This includes 87,000 people in the Eringeti-Luna axis (Beni territory) where the Route National 2 (RN2) was impassable. The alternative route explored by WFP was also unsuccessful due to deteriorated road conditions. Moreover, over 88,000 people in the Mweso health zone (Masisi territory) were not reached following security concerns and landslides. WFP is looking at avenues to bolster cash-based assistance considering the insecurity situation. On 18 November, WFP launched a targeting exercise to identify and assess the internally displaced people that fled their villages from the M23 armed group attacks. OCHA estimates that some 51,700 internally displaced people are hosted in Kayna, Lubero territory. WFP redirected resources it could not distribute during early November due to the unrest and reached more internally displaced people.
- **Ituri:** The Bunia office reached 225,000 people with in-kind assistance, cash support and supplies for the treatment and prevention of malnutrition. Cash distribution began on 21 November and 125,000 people were assisted. WFP could not conduct cash assistance in the Gethy health zone due to lack of resources. In-kind assistance reached 42,000 people, which is low compared to October due to increased military activity in Buba village, Djugu territory. In addition, 57,000 children and pregnant and lactating women and girls received nutritional products to treat and prevent malnutrition. The overall security situation remains worrying due to military activities by the Cooperative for the Development of Congo (CODECO), Zaire and the non-state armed group Mai-Mai, mainly in the territories of Djugu, Irumu and Mambasa.
- **South Kivu:** WFP assisted **245,000 people** with in-kind assistance, cash support and malnutrition prevention and treatment supplies. WFP in partnership with *Actions et Interventions pour le Développement et l'Encadrement Social*

(AIDES) and UNHCR distributed cash to over **31,000** Burundian refugees living in the camps of Lusenda and Mulongwe in Fizi territory. Moreover, **115,000** children and pregnant and lactating women and girls (PLW/Gs) with nutritious products to treat and prevent malnutrition. Additionally, for the 16 days of activism against gender-based violence, the Bukavu office with support from World Vision, trained 155 people (95 women and 60 men) members of the school feeding committee and community complaint committee in Uvira territory. The training focused on the Protection of Sexual Exploitation and Abuse (PSEA) and child protection principles to reduce child abuse cases as championed by WFP's school feeding programme.

Supply Chain

- **Procurement:** In preparation for the food requirements for the first quarter of 2023, WFP launched two tenders for 10,538 mt of maize meal and 2,450 mt of beans. WFP completed awards for the provision of 400 mt of maize meal for Tshikapa and 532 mt for Kananga, the stock is an international purchase. The grains are under quality testing with *Office Congolais de Controle* (OCC). A previous contract of 250 mt for Tshikapa contained high levels of aflatoxin (fungal toxins) and was subsequently rejected. This is expected to cause some delivery delays to Tshikapa that could affect January distributions.
- **Food Safety and Quality (FSQ):** WFP is preparing for the implementation of the periodical pilot compliance programme to conduct downstream quality control analysis of all commodities in the warehouses in the Sub-Offices.
- **Bilateral Services Provision (BSP):** From 15 to 18 November, WFP participated in a workshop organized by the Ministry of Health under the theme 'Integration of COVID-19 activities into the national vaccination plan'. This workshop is set to strengthen WFP's relationship with the Ministry of Health towards implementing the Africa Centre for Disease Control-Saving Lives and Livelihoods project and other health supply chain activities

Clusters and Common Services

Logistics Cluster

- **Information Management/Geographical Information Systems:** The Logistics Cluster shared documents and operational maps on the dedicated [portal](#). The Logistics Cluster monitored and shared physical access alerts via: drc-logs@logcluster.org.

Food Security Cluster (FSC)

- FSC completed the Humanitarian Response strategy for 2023. The cluster successfully convinced the Humanitarian Country Team on three important issues: (i) to target 70 percent of the population in IPC 3 and 4. (ii) to broaden coverage of assistance beyond conflict affected areas, (iii) to

consider inflation and the spike in prices of food commodities.

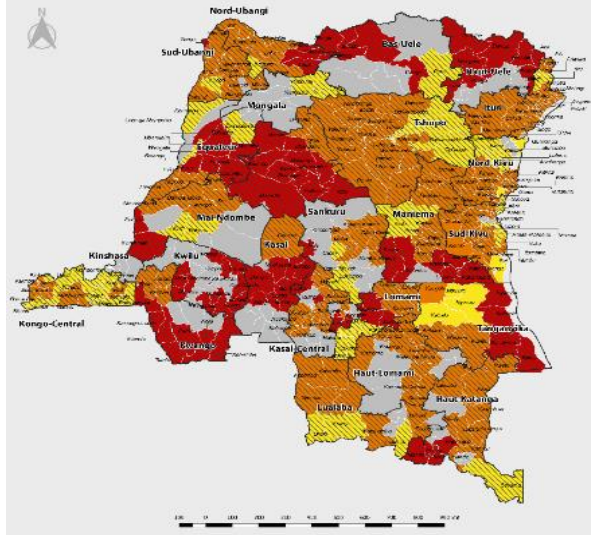
UN Humanitarian Air Service (UNHAS)

- **Operational Overview:** In November, UNHAS and EU Humanitarian Air Force (EUHAF) transported **3,606** passengers and **42 mt** of essential light cargo.
- **Special Flights:** UNHAS conducted seven special flights for UNICEF, UNHCR, International Committee of the Red Cross (ICRC), Médecins Sans Frontières (MSF-France), Médecins Sans Frontières- Operational Centre Barcelona (MSF-OCBA).
- **Medical Evacuations:** UNHAS conducted 20 evacuation flights out of Walikale, Goma, Bunia, Mambas a, Bukavu, Gbadolite Ubangi, Kalemie and Mahagi for UNHCR, ICRC, World Vision, Médecins Sans Frontières- Hollande (MSF-Hollande), Médecins Sans Frontières- France (MSF-France), Médecins Sans Frontières-Suisse (MSF- Switzerland) and The Salvation Army.
- **Fuel Situation:** UNHAS locations have sufficient fuel reserves.

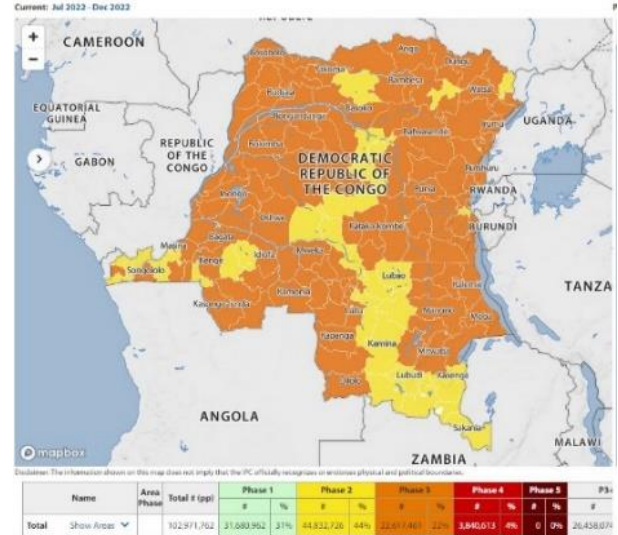
Communications

- The Communications, Advocacy and Marketing (CAM) published a [human interest story](#) detailing the European Civil Protection and Humanitarian Aid Operations (ECHO) cash-based assistance to displaced people.
- In demonstrating the impact of resilience building programme, in Tanganyika province, CAM published a story of change accessible here - [WFP-backed literacy training empowers women recovering from conflict](#)
- The CAM team briefed local journalists in Goma and Beni and outlined WFP's mandate and its response to the unfolding humanitarian situation in eastern DRC.
- The CAM team has also supported a recent US donor mission to Ubangi.
- On 28 November, WFP marked the start of the [16 Days of Activism against Gender-Based-Violence](#) calling for the prevention and elimination of violence against women and girls across DRC.

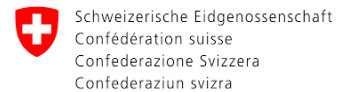
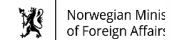
Maps of Acute Malnutrition Situation: July - December 2022



Acute Food Insecurity Situation: July - December 2022



WFP thanks the following partners who contributed resources in 2022:



Contacts

- Peter MUSOKO, Country Director: peter.musoko@wfp.org
- Courage Nyamhunga, Reports Officer: courage.nyamhunga@wfp.org
- For further information, visit the Democratic Republic of Congo page [here](#).