

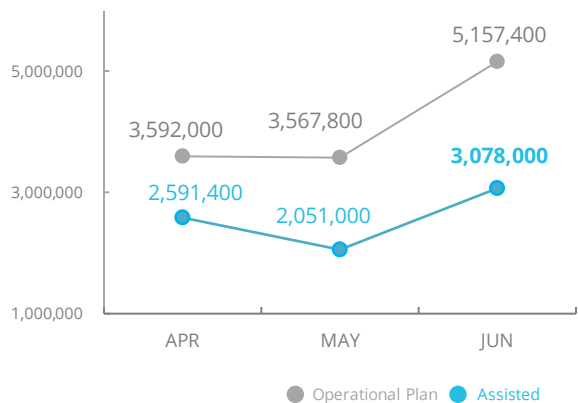


World Food Programme

Central Sahel



PEOPLE ASSISTED Across Burkina Faso, Mali and Niger



SOURCE: WFP, 10 AUG 2021



OPERATIONAL PROFILE People reached (June)

Activity	Targeted
General Food Assistance (GFA)	663,800
Nutrition	29,500
Food for Assets (FFA)	109,100
School Feeding	52,600
General Food Assistance (GFA)	1m
Nutrition	10,300
Food for Assets (FFA)	197,300
School Feeding	180,000
General Food Assistance (GFA)	513,300
Nutrition	92,800
Food for Assets (FFA)	529,300
School Feeding	147,900

Operational Updates

BURKINA FASO

WFP mounted a special operation via UNHAS for food distributions in Mansila, Sahel region. WFP launched in the Centre-Nord region the first e-voucher distributions of a regional project strengthening the links between nutrition and resilience activities. Due to funding shortfalls, WFP was forced to reduce rations to ensure continued assistance to at least 600,000 IDPs, providing a 75 percent ration in hard-to-reach areas and 50 percent in all other locations.

MALI

WFP is targeting 600,000 people in July-October, as part of the lean season response in central and northern regions through emergency response, social protection support and supplementary blanket feeding. Due to funding shortfalls, WFP will implement a lean season response strategy including safety nets sensitive to shocks.

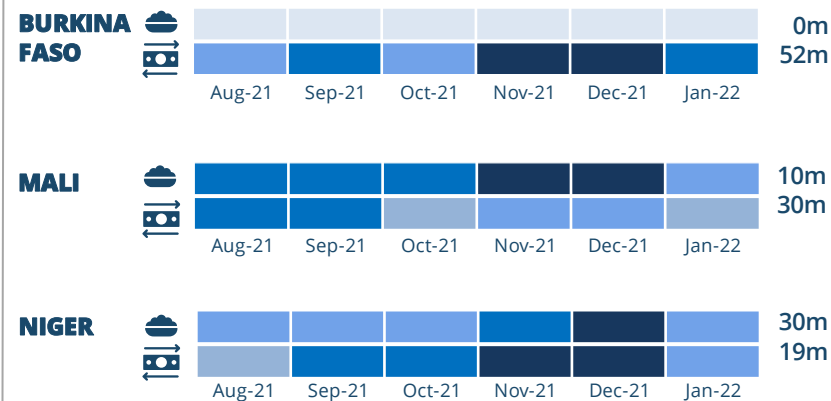
NIGER

For the pastoral lean season response (April-June), WFP assisted 75,000 people with three months of unconditional food and cash distributions in Tahoua, Tillabéri, Zinder and Maradi. For the agricultural lean season response, WFP will assist 240,000 people (53 percent with food and 47 percent with cash). Due to funding and procurement constraints, distributions were delayed.

EXPECTED PIPELINE BREAKS (US\$)

SOURCE: WFP, 18 AUG 2021

6 month shortfalls



Monthly shortfall: SF < 5% | 5% < SF < 20% | 20% < SF < 50% | 50% < SF < 80% | SF > 80%

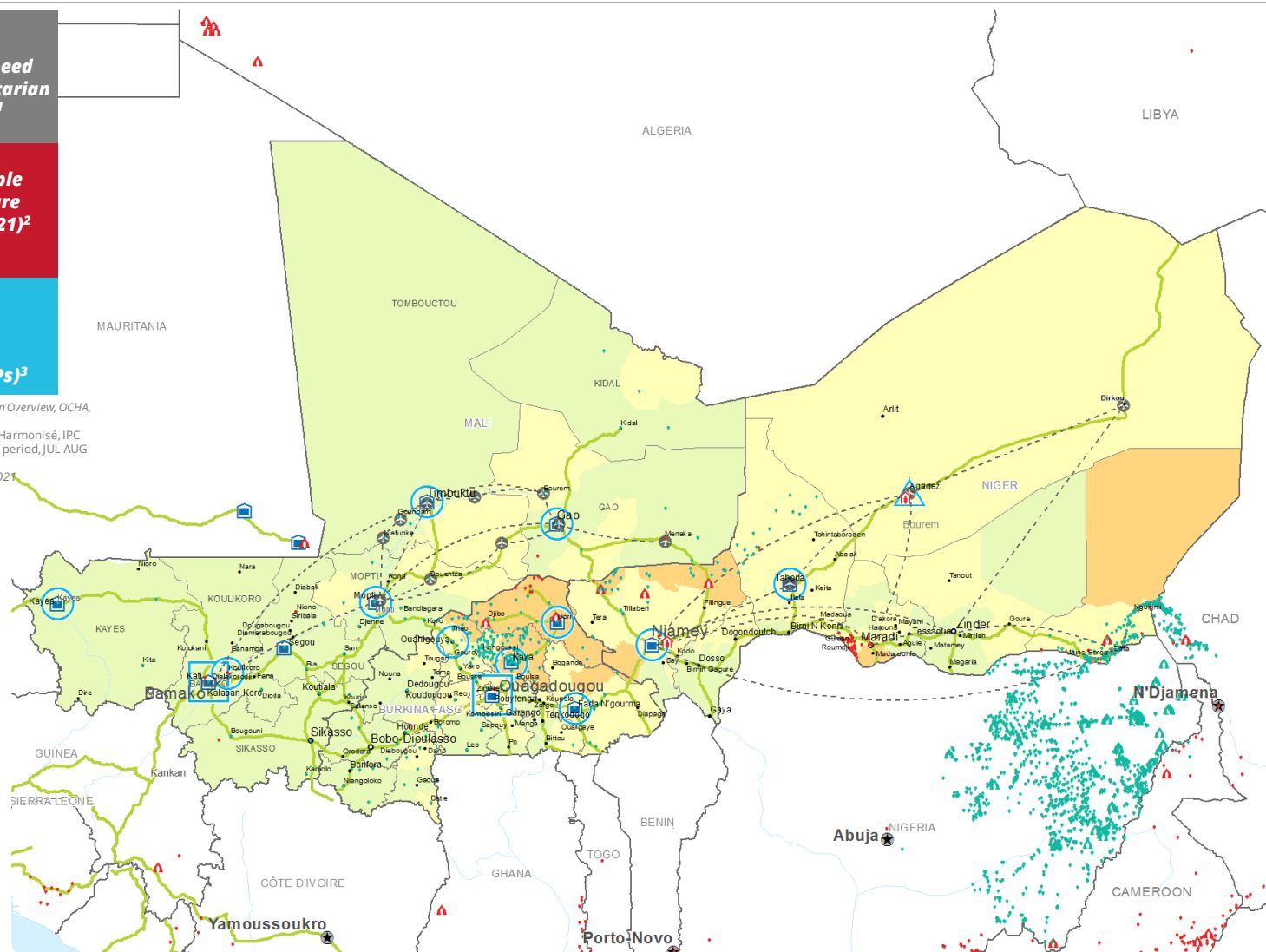
Emergency Dashboard | July 2021

13.4m people in need of humanitarian assistance¹

6.5m people food insecure (Jul-Aug 2021)²

2m Internally Displaced People (IDPs)³

¹ Global Humanitarian Overview, OCHA, April 2020
² March 2021 Cadre Harmonisé, IPC Phase 3-4, projected period, JUL-AUG 2021
³ UNHCR, Govt, July 2021



FUNDING

Burkina Faso, Mali and Niger Country Strategic Plans

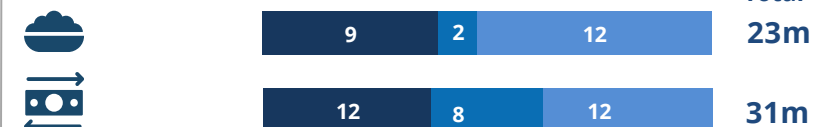
September – February 2022

Net funding requirements (needs based) (6 months - US\$)

BURKINA FASO	128m	219.4m
MALI	39.6m	
NIGER	51.8m	

SOURCE: WFP, 23 AUG 2021

AVERAGE MONTHLY REQUIREMENTS (US\$) – August



KEY FIGURES

Total Population (in millions)

Internally Displaced People

Refugees (does not include returnees)

Food Insecure People (CH Phases 3-5)

People Prioritized by WFP

UNFPA, HRP, JUN 2021

UNHCR, Government, JULY 2021

UNHCR, Government, JULY 2021

March 2021 Cadre Harmonisé, IPC Phase 3-4, projected period, JUL-AUG 2021

Planification figures (WFP COUNTRY STRATEGIC PLANS) *Niger 2021 data is not yet available

WFP LEVEL 3 EMERGENCY SINCE 09 SEPTEMBER 2019

SITUATION REPORTS and COUNTRY BRIEFS:

BURKINA FASO
MALI
NIGER



CH Food Security Classification
October - December 2020

No data
Crisis (Phase 3)
Minimal (Phase 1)
Emergency (Phase 4)
Stressed (Phase 2)
Famine (Phase 5)

Country Office
Sub Office
Field Office

IDP Camp
IDP Center
IDP Location

Refugee Camp
Refugee Center
Refugee Location

Warehouse
UNHAS Connection
UNHAS Route
Road Supply Route

National Capital
Major Town
Intermediate Town
Small town

International Boundary
Region Boundary
River