

WFP PALESTINE EMERGENCY RESPONSE External Situation Report 88

Reporting Period:
1-30 April 2026

HIGHLIGHTS

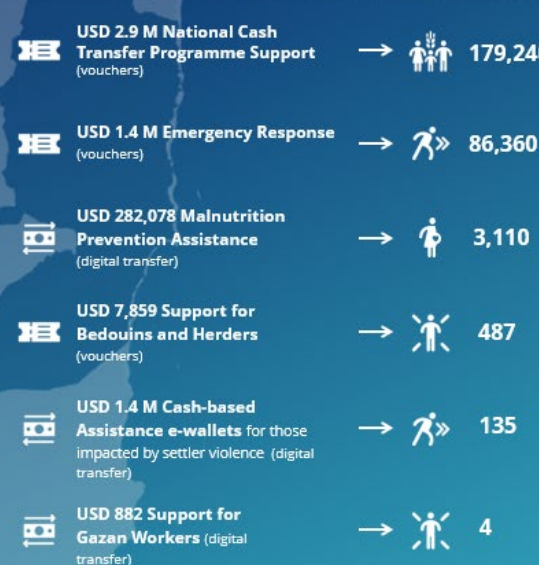
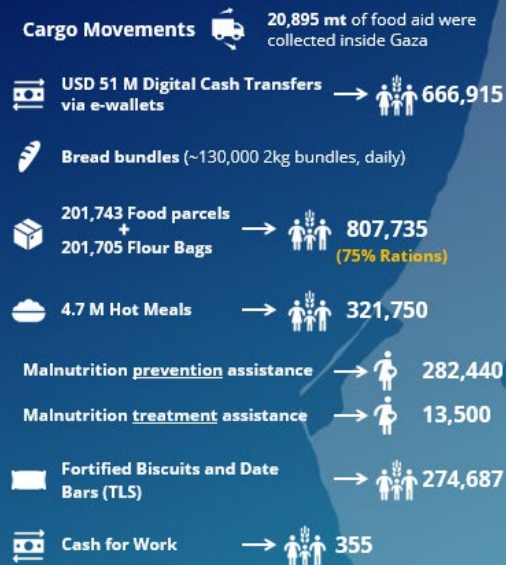
- In April 2026, humanitarian and commercial inflows into Gaza remain below the needs of the population, impacting food security and limiting progress in household consumption, with one in five families still surviving on only one meal per day.
- While the reopening of the Zikim crossing in the north of Gaza has improved the flow of goods, limitations and congestion continue to constrain cargo volumes.
- Despite the restricted environment, WFP is scaling up cash transfers and private-sector support initiatives, including through bakeries and retailers. The lack of access to fuel, spare parts, engine oil and other critical supplies is stifling commercial recovery.
- In the West Bank, heightened settler violence, restrictions, and dispossessions are driving displacement and rising needs, prompting WFP to scale up assistance.

APRIL IN NUMBERS Reporting period 1-30 April 2026

PALESTINE **1.7 M beneficiaries (2 million planned)**

Gaza **1,377,462 (1.6 million planned)**

West Bank **295,179 (447,800 planned)**



WFP Total Needs for 2026: USD 1.3 B

WFP Six-months Net Funding Requirements: USD 258.2 M May - Oct 2026

Figures are subject to change pending final partner reporting for the month. Total beneficiary numbers account for overlap among individuals receiving multiple types of assistance.

SITUATION UPDATE

- **Regional tensions remain high.** Amidst a fragile ceasefire, maritime incidents and military activity are disrupting shipping routes and elevating fuel and food prices. Cross-border strikes and attacks continue between Israel and southern Lebanon, with high levels of displacement.
- **In Gaza, the situation remains unstable.** Military activity continues with daily attacks including airstrikes. Security incidents including looting of humanitarian cargo increased over the month.
- According to WFP's latest [April 2026 Market Monitor](#), **food consumption in Gaza remained critically low**, particularly for fresh foods and protein sources, increasing malnutrition risks. **Commercial wheat flour shortages, limited market supply, and a severe liquidity crisis** continued to constrain access to food and essential goods. While humanitarian and commercial truck entries increased following the **reopening of Zikim crossing**, volumes remained well below required levels. Food prices declined slightly in late April but remained volatile and above pre-crisis levels.
- **In the West Bank, the situation remains tense.** Israeli military operations have intensified in the north, with

continued raids, arrests, and movement restrictions. Civilian casualties, infrastructure damage, and localized displacement have been reported.

PROGRAMME UPDATE

General Food Assistance in Gaza

- In April, WFP reached **807,735 people through 36 active distribution sites**. Rations are **75 percent of the full entitlement**. Each household receives two food parcels, one bag of wheat flour, and 2.5 kg of fortified biscuits.
- WFP supports **26 bakeries** producing an average of **130,000 bread bundles daily** (2 kg each). Most bread (80 percent) is sold at subsidized prices through retailers, while 20 percent is distributed for free through community kitchens. Production has increased as bakeries expand their sales networks. The **diesel-only model**, launched on 25 April, continues in five of the six planned bakeries. This model assesses the feasibility of transitioning to a more private sector-driven approach in which bakeries procure all commodities locally, with the exception of fuel. **High prices** and **shortages of spare parts and engine oil** remain a **key constraint**, with some bakeries reusing old oil.

- From 15 April, **daily hot meal production was reduced – in line with a shift towards cash-based assistance – from 350,000 to 250,000.** Meals are prepared through **26 kitchens** and distributed across **330 sites**, focusing on underserved and hard-to-reach areas. Free bread continues to be distributed.



Nutrition Assistance in Gaza

- WFP partners continue to provide **malnutrition prevention assistance** across 206 sites, reaching 282,440 pregnant and breastfeeding women and girls (PBWG) and children under five (CU5). **Treatment services** remain active across **93 sites, reaching 13,500 PBWG** during the same period.
- In collaboration with UNICEF and the Education Cluster, **WFP provided fortified snacks to 274,687 children** across 438 temporary learning spaces.
- Cash for prevention (C4P) activities are expanding.** In April, 18,190 PBW and CU5 received conditional top ups linked to attendance at the Social and Behavior Change Communication (SBCC) awareness sessions.



Digital Payments in Gaza

- During the reporting period, WFP provided **digital cash assistance through e-wallets to 666,915 people** (130,000 households). Of these, 62,000 are fixed households that receive regular monthly transfers. The remaining households receive one-off support on a rotational basis.
- Under cash for work (CfW)**, a total of 427 participants were engaged in activities such as sewing, carpentry, and digital financial literacy. Production included shades, bags, chairs, and tables. A total of 2,413 e-wallets were activated. April payments were completed for all participants. Help desks supporting digital payments continued to expand, with 38 sites now operational.



West Bank Operations

- WFP continues to implement emergency and regular assistance programmes** in the West Bank to support vulnerable populations affected by ongoing socioeconomic shocks and displacement.
- So far in April, assistance was provided to **295,179 people** through a combination of food vouchers, in-kind food and cash-based transfers, targeting food-insecure households, displaced families, and vulnerable herder communities.



SUPPLY CHAIN

- All corridors - Ashdod, Egypt, Israel, Jordan, and the West Bank - are operational.** Following a decline in aid throughput after the breakdown of the Ashdod scanner on 17 March, the rate of aid flow improved during the second half of April, returning to pre-breakdown levels.
- From Egypt, the share of manifested trucks returned without offloading varied widely. **In April, the average offload rate was 70 percent**, with a degree of fluctuation over time.
- Zikim and Karam Abu Salem/Kerem Shalom (KS) are authorized for aid entry, with cargo collected on alternating days. **Congestion at Zikim is increasing pressure on KS.** Efforts continue to improve collection sequencing and lift the 100-truck cap.
- Access constraints** inside Gaza continue to limit convoy capacity and make movement less predictable.

- Severe shortages of engine oil and spare parts are disrupting operations.** Only half of WFP's 80-truck fleet is functional, raising the risk of shutdown of WFP operations. This also affects bakery production, commercial machinery, and monitoring due to limited armoured vehicles.

CLUSTERS AND COMMON SERVICES



Food Security Sector (FSS)

- As of 29 April, partners prepared and delivered **1.1 million meals daily through 121 kitchens** (including WFP-supported kitchens), reaching nearly 2,000 locations.
- Daily meal output has declined** due to rising food prices, higher operating costs, and a shift in how assistance is delivered.
- Animal feed distributions took place from 15–25 April, reaching over **2,200 herders and animal owners**. A second round began on 27 April, targeting the same group.
- The lack of engine oil and spare parts is disrupting agricultural production.** Water wells, irrigation systems, and farming equipment are at risk of shutting down.



Logistics Cluster (LC)

- Following the reopening of Erez West (Zikim) on 12 April, the Logistics Cluster facilitated collection operations from this platform alongside KS. During April, the Cluster collected **8,620 pallets** on behalf of six partners and conducted physical counts at KS, when access was granted.
- Twelve common warehouses across Gaza provide over 15,000 m² of storage.** All collected pallets were dispatched there for temporary storage.
- The Cluster also facilitated **12 back-to-back (B2B) convoys** from Jordan via King Hussein Bridge - Allenby and Sheikh Hussein Bridge - Jordan River, with 278 trucks carrying shelter and WASH supplies on behalf of three partners. **B2B requires cross-loading cargo between Jordanian, Israeli, and Palestinian trucks before entering Gaza, making delivery slower and more complex.*
- Operations faced constraints**, including intermittent crossing closures that reduced offloaded trucks and limited cargo collection. Approval delays for “dual use” items continue to affect capacity. At Ashdod seaport, scanner issues limited daily container clearance to 40–60, below the 80–100 target.



Emergency Telecommunications Cluster (ETC)

- Telecommunications remain critically disrupted.** Mobile data is unavailable, and voice coverage is intermittent in limited areas. Networks rely on overstretched generators, raising the risk of a full blackout without urgent entry of fuel and spare parts.
- The Cluster expanded coordination support through a new **bilingual connectivity portal** at the Gaza City humanitarian hub, providing secure access to over 150 responders each month.
- Community information services also expanded, with **Radio Insan delivering verified humanitarian information** to affected populations.