

WFP PALESTINE EMERGENCY RESPONSE External Situation Report 89

HIGHLIGHTS

- Families in Gaza continue to face severe economic hardship, with high unemployment and continued reliance on humanitarian assistance for basic food needs, including wheat flour. One in five households still eats only once daily.
- WFP continued large-scale food assistance through distributions, bakeries, and community kitchens, alongside a shift toward increased cash-based support via e-wallets. Nutrition and child-focused assistance also continued, including support for pregnant and breastfeeding women and children in learning spaces, while reduced commercial inflows kept pressure on markets and household access to food.
- In the West Bank, humanitarian needs continued to rise due to military operations, violence, movement restrictions, and displacement. WFP continued emergency food and cash assistance to vulnerable households.

MAY IN NUMBERS

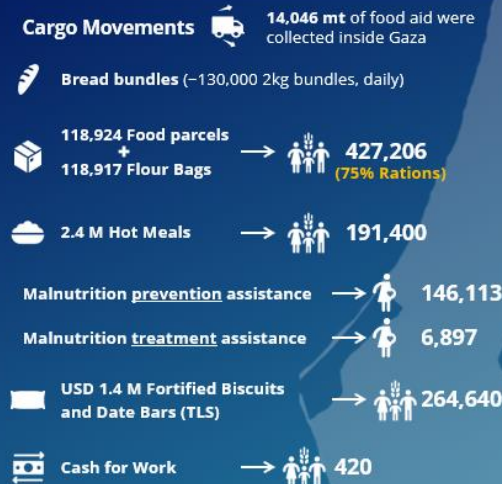
Reporting period 1-15 May 2026

PALESTINE

518,595 beneficiaries**
(2 million planned)

Gaza **506,390** (1.6 million planned)

West Bank **447,800** (447,800 planned)



In-kind Rations for Bedouins and Herders (in-kind) → **487**

USD 75,020 Cash-based Assistance e-wallets for those impacted by settler violence (digital transfer) → **635**

Note: For the reporting period 1-15 May 2026, CBT voucher distribution data for the West Bank is unavailable due to a technical issue. Available West Bank data reflects only in-kind ration distributions (distributed to 487 beneficiaries) and cash assistance delivered through e-wallets (provided to 635 beneficiaries). As a result, total beneficiary figures for the West Bank* and Palestine overall** are not available for this reporting period.

*West Bank CBT voucher distribution data unavailable for the reporting period.
**Palestine total excludes West Bank CBT voucher distribution data due to unavailability.

Figures are subject to change pending final partner reporting for the month. Total beneficiary numbers account for overlap among individuals receiving multiple types of assistance.



Largest Donors



WFP Total Needs for 2026: USD 1.3 B

WFP Six-months Net Funding Requirements: USD 258.2 M May - Oct 2026

SITUATION UPDATE

- Regional tensions remain high.** Maritime disruptions and continued military activity across the region continue to affect shipping routes and contribute to elevated fuel and food prices.
- In Gaza, the situation remains unstable.** Military activity and airstrikes continue across the Strip - despite the ceasefire - while humanitarian access remains constrained due to insecurity, operational restrictions, and damage to infrastructure. Reports of looting, criminality, and disruptions affecting humanitarian operations and aid delivery continued during the reporting period.
- In the West Bank, the situation remains tense.** Military operations, particularly in northern governorates, continue alongside raids, arrests, demolitions, and movement restrictions. Civilian casualties, settler-related violence, displacement, and infrastructure damage continue to be reported.

PROGRAMME UPDATE

General Food Assistance in Gaza

- In May so far, WFP reached **427,206 people through 36 active distribution sites**. Rations are **75 percent of the full entitlement**. Each household receives two food parcels, one bag of wheat flour, and 2.5 kg of fortified biscuits.
- WFP supports **28 bakeries** producing an average of **130,000 bread bundles daily** (2 kg each). Most bread (80 percent) is sold at subsidized prices through retailers, while 20 percent is distributed for free through community kitchens. The **diesel-only support model**, launched on 25 April, continues in five of the six planned bakeries, increasing daily production. This model assesses the feasibility of transitioning to a more private sector-driven approach in which bakeries procure all commodities locally, with the exception of fuel. **High prices** and **shortages of spare parts and engine oil** remain a **key constraint**, with some bakeries reusing old oil.
- From mid-April, **daily hot meal production was reduced - in line with a shift towards cash-based assistance - from 350,000 to 250,000.**

- Meals are prepared through **24 kitchens** and distributed across **281 sites**, along with free bread.



Nutrition Assistance in Gaza

- WFP partners continue to provide **malnutrition prevention assistance** across 157 sites, reaching 146,113 pregnant and breastfeeding women and girls (PBWG) and children under five (CU5). **Treatment services** remain active across **76 sites, reaching 6,897 PBWG** during the same period.
- In collaboration with UNICEF and the Education Cluster, **WFP provided fortified snacks to 264,640 children** across 440 temporary learning spaces.
- Social and Behavior Change Communication (SBCC) awareness sessions under **Cash for prevention (C4P) activities** continued. In May WFP plans to target 20,000 beneficiaries, with conditional top-ups to follow.



Digital Payments in Gaza

- In May, WFP plans to provide **digital cash assistance through e-wallets to 500,000 people** (100,000 households). Of these, more than 57,000 are fixed households that receive regular monthly transfers. The remaining households receive one-off support on a rotational basis. Help desks supporting digital payments continued to expand, with 40 sites now operational.
- Under cash for work (CfW)**, 420 participants were engaged in activities such as sewing, carpentry, and digital financial literacy. Production included shades, bags, chairs, and tables, while priority agricultural land identified for rehabilitation was referred for UXO assessment ahead of planned rehabilitation activities. A total of 3,543 e-wallets were activated.



West Bank Operations

- WFP continues to implement emergency and regular assistance programmes** in the West Bank to support vulnerable populations affected by ongoing socioeconomic shocks and displacement.
- For the reporting period of 1-15 May 2026, **cash-based transfer (CBT) voucher distribution data for the West Bank was unavailable due to a technical issue**. The only available figures for the West Bank are for **in-kind distributions**, which reached **487 beneficiaries**, and **cash assistance** delivered through e-wallets, which reached **635 beneficiaries**.



SUPPLY CHAIN

- All supply corridors remain operational**, including Ashdod, Egypt, Jordan, and the West Bank. Convoys from Jordan and Ashdod continue to move regularly, supporting cargo dispatches into Gaza.
- In the West Bank, wheat flour production continues for onward dispatch to Gaza.**
- Access restrictions inside Gaza**, including limitations on enabling equipment, checkpoint delays, inspections, communication disruptions, and movement denials affecting drivers and personnel, **continue to constrain convoy operations and reduce the predictability of cargo movement**.
- Through Specialized Machinery and Engineering Projects (SMEP), **WFP continues supporting efforts to maintain road access conditions**, including support to Erez West

(Zikim) operations and northern arterial routes – such as Al Rashid Road and Salah ad-Din Road – as well as other access routes utilized by WFP. However, persistent sewage overflow and infrastructure failures continue to affect operational sustainability and require longer-term technical solutions.

CLUSTERS AND COMMON SERVICES



Food Security Sector (FSS)

- As of 13 May, 23 partners were operating 103 kitchens preparing and delivering over **1 million meals** daily across **1,758 distribution points**. Some partners have gradually scaled down operations due to rising operational costs and increasing efforts to diversify assistance modalities.
- In the first half of May, one round of **animal feed** distribution supported more than **2,200 herders**, with each household receiving three bags of concentrate feed and one bag of barley.



Logistics Cluster (LC)

- The Logistics Cluster continues facilitating cargo collection from Kerem Shalom (KS) and Zikim on alternating days. Between 1 and 15 May, **6,579 pallets**, mainly shelter and WASH items, were collected from both platforms.
- The cap of **100 humanitarian and commercial trucks per day at Zikim** imposed by Israeli authorities contributes to congestion and delays by limiting cargo collection and dispatch capacity.
- Access to the **KS platform remains restricted to one organisation at a time and to international staff only**. A physical inventory conducted on 15 May identified more than **2,500 pallets** of humanitarian cargo at the platform, while a high number of rejections or returns continue to be reported at the crossing.
- Through the Jordan corridor, the Logistics Cluster facilitated **11 back-to-back (B2B)*** convoys comprising 179 trucks carrying shelter and WASH supplies on behalf of four partners. **B2B requires cross-loading cargo between Jordanian, Israeli, and Palestinian trucks before entering Gaza, making delivery slower and more complex.*
- Operational constraints continue to affect planning and cargo movement**. Although “dual-use” items are authorised for entry twice weekly, schedules remain unpredictable with frequent last-minute changes by Israeli authorities.
- Since early May, **offloading rates into Gaza have fluctuated across routes**, with the Egypt corridor particularly affected by high rejection rates. Offloading rates stood at 55 percent through Egypt, compared to 94 percent through Ashdod and 74 percent through both Israel and the West Bank routes.



Emergency Telecommunications Cluster (ETC)

- The Cluster continues adapting operations in Gaza to sustain critical communications for humanitarian responders, **prioritizing secure connectivity, power supply, and network maintenance**, while advocating for access to fuel, spare parts, and essential equipment amid fragile and highly disrupted infrastructure.