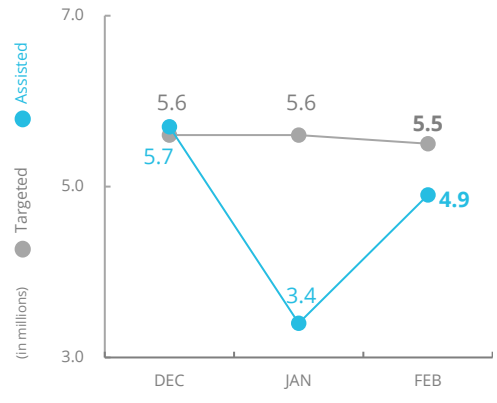


Syria

PEOPLE ASSISTED General Food Assistance



SOURCE: WFP, FEB 2023

OPERATIONAL PROFILE By Activity (February)

Activity	Percentage	Assisted
General Food Assistance	89%	4.9m
School Feeding	98%	578,120
Livelihoods and Resilience*	3%	4,500
Treatment of Moderate Acute Malnutrition	34%	12,640
Prevention of Moderate Acute Malnutrition	78%	190,290
Unique beneficiaries across all activities		5.1m

OPERATIONAL PROFILE By Modality (February)

31,972 mt
Food distributed

USD 3.5m
Cash-based transfer disbursed

FOOD SECURITY 2023

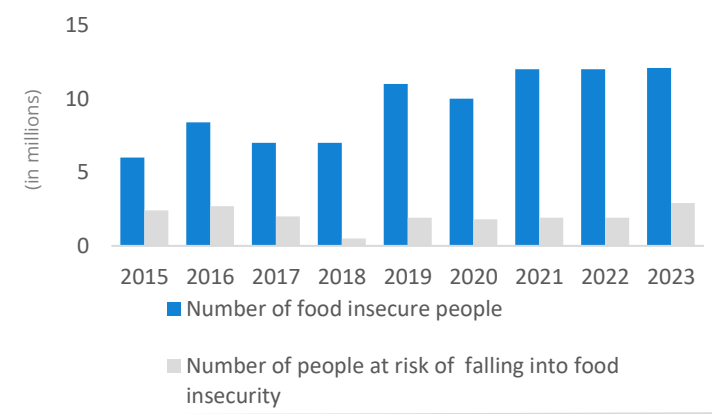
12.1m people food insecure

2.7m* people severely food insecure

2.9m people at risk of falling into food insecurity

SOURCE: Humanitarian Needs Overview 2023 and Whole of Syria Food Security Sector
*Are part of 12.1 people food insecure

FOOD SECURITY TREND



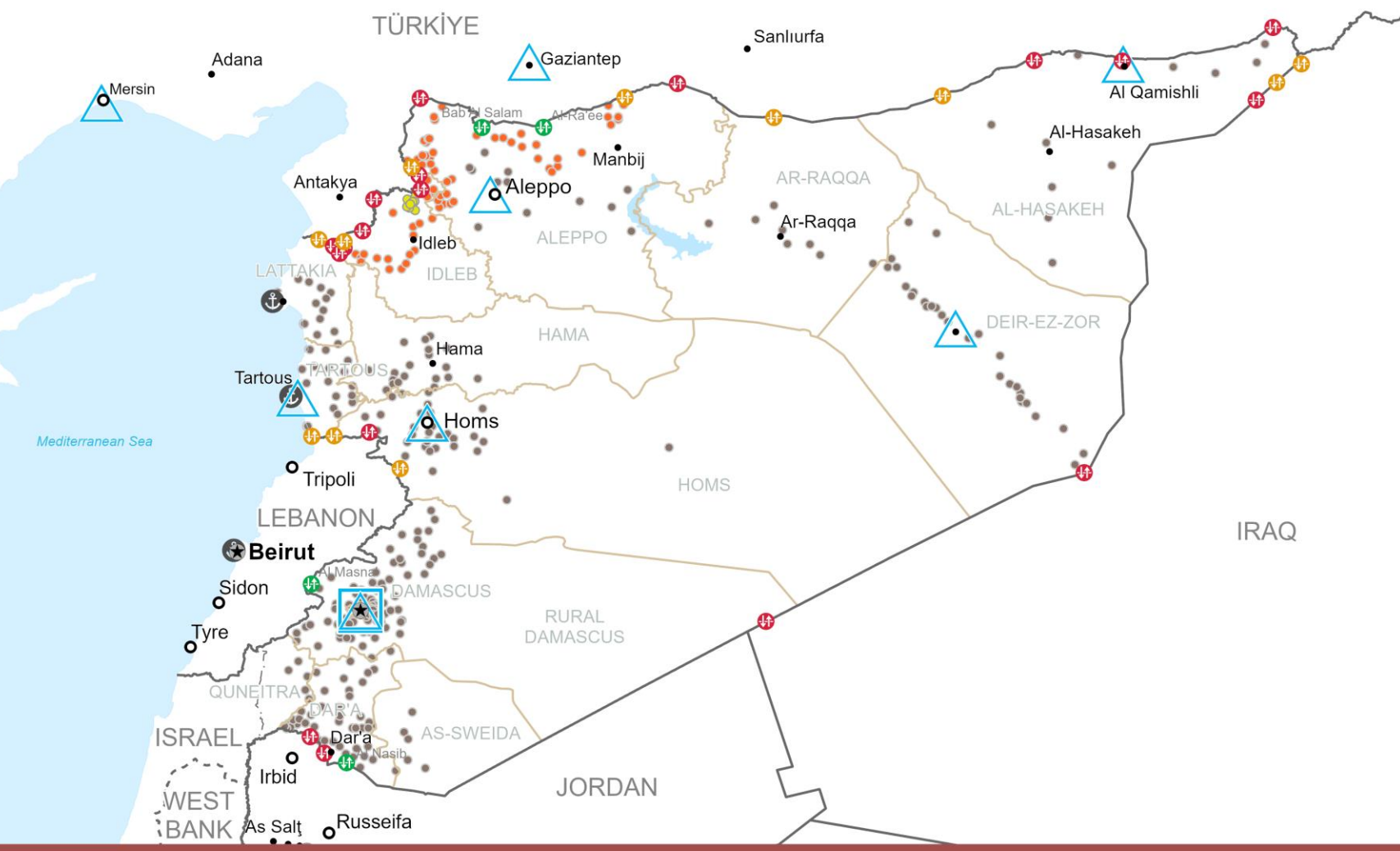
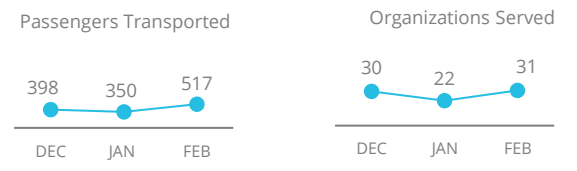
FUNDING

Interim Syria Country Strategic Plan (ICSP)
March – August 2023

US\$792.2m
Net funding requirements

2023 RESPONSE
Requirements: US\$1.5b

UN HUMANITARIAN AIR SERVICE (UNHAS)



Country Office (Square icon), **Field Office** (Triangle icon), **Warehouse** (House icon), **Open Border Crossings** (Green flag icon), **Open Border Crossings with Restrictions** (Yellow flag icon), **Closed Border Crossings** (Red flag icon), **Port** (Anchor icon), **National Capital** (Star icon), **Major Town** (Circle icon), **Intermediate Town** (Dot icon), **International Boundary** (Solid line), **Governorate Boundary** (Dashed line), **Armistice Boundary** (Dotted line), **Food Distribution Points (FDP) in February 2023**: Regular Deliveries (Grey dot), Cross-Border Deliveries (Red dot), Cross-Line Deliveries (Yellow dot).

Approx. 69% of total FDPs are displayed on this map.

Sources: WFP, OCHA, GLCSC, UNGIWG, UNHCR, Geonames
The designations employed and the presentation of material on this map do not imply the expression of any opinion whatsoever on the part of WFP concerning the legal or constitutional status of any country, territory, city or sea or concerning the delimitation of its frontiers or boundaries.
© World Food Programme 2023

*As part of its livelihoods strategy, WFP is gradually phasing out from household-level interventions and focusing more on communal asset rehabilitation. Thus, direct distribution of assistance is implemented as a complementary activity to communal asset rehabilitation activities and when necessary.

This dashboard is based on best available information at the time of production. Future updates may vary as new information becomes available.

WFP EMERGENCY CLASSIFICATION: Corporate Attention

SITUATION REPORT and COUNTRY BRIEF

Gender and Age Marker

SOURCE: WFP, FEB 2023

SOURCE: Humanitarian Needs Overview/ Humanitarian Response Plans

SOURCE: WFP, FEB 2023

SOURCE: WFP, FEB 2023