



WFP Democratic Republic of the Congo

December Situation Report #44 – 17 January 2023

Highlights

- **Eastern DRC:** In North Kivu, the clashes between DRC armed forces and March 23 Movement (M23) forces are ongoing despite the ceasefire agreements. OCHA estimates that over 510,000 people have been displaced since March and another 7,000 have sought refuge in Uganda.
- In response to the eastern crisis, in December, WFP provided 187,000 people in Nyiragongo and Lubero with lifesaving assistance. For the second week of January, WFP aims to support, 110,000 people in Nyiragongo territory with cash-based transfers (CBT) and 79,000 people in Lubero territory with in-kind food assistance.
- WFP aims to support 250,000 people with food and nutrition assistance until April. To do that, extra USD 50.6 million is needed. WFP's resources to meet the immense humanitarian need are incredibly low. WFP has almost exhausted its food stocks intended for use in January and February 2023.

Situation Update

- On 23 December, M23 announced its withdrawal from Kibumba territory in North Kivu and handed it over to the East African Community Regional Force (EACRF). However, local sources note that the M23 forces are still patrolling in all the villages around Kibumba and Buhumba. Over 30,000 internally displaced people (IDPs) are still sheltered in Kanyaruchinya, Munigi and Mudja areas in North Kivu.

WFP Response

- Under the revised Country Strategic Plan 2021-2024, WFP continues its large-scale operation targeting **7.1 million** people with food, nutrition, and resilience support in 2023.

	26.4 m highly food-insecure people (51% female/49% male) (50% children/50% adults)
	26 provinces affected
	5.5 m people displaced (52% female/48% male) (58% children/42% adults)
	6.2 m people reached in 2022 (58 % female/42 % male) (66 % children/34 % adults)
Total 2023 funding requirements US\$ 627.3 m	
6-month Net Funding Requirements (January 2023 – June 2023)	
Food Assistance	US\$ 90.5m
Nutrition	US\$ 35.9m
Other activities	US\$ 30m
Total	US\$ 156.4m



Food and Nutrition Assistance

- **Overview:** In December, WFP reached **1.1 million people** with in-kind, cash and nutrition assistance. It supported **549,000 people** with in-kind food distributions and reached **397,000 people** with cash-based transfers. Additionally, WFP assisted **212,000 children and pregnant and lactating women and girls** (PLW/Gs) with nutritious products to treat and prevent malnutrition.

- **Kasaï:** WFP reached **221,000 people** with in-kind assistance, cash-based support, and nutrition treatment supplies. In-kind assistance distribution started late due to verification procedures, and **62,000** people received reduced rations of maize meal oil, pulses and no salt in Kamonia due to shortages. The office reached **137,000** people with cash assistance across three health zones. The WFP-FAO resilience project will publish the results validating the list of beneficiaries. The office is set to commence CBT and nutrition surveys in three health zones in the second week of January 2023. Additionally, WFP finalized all Field Level Agreements (FLA) for 2023 and is awaiting feedback from the Country Office. It reached **21,000** children and PLW/Gs with nutritious products to treat and prevent malnutrition.
- **Kasai Central and Kasai Oriental:** WFP assisted **161,000 people** with in-kind assistance and nutrition prevention and treatment. In-kind assistance reached **67,000** people, lower than in November due to the poor road conditions making it difficult to deliver food. The office completed in-kind assistance data collection in Tshibalala health zone. WFP is still processing the list of people set to benefit from the Resilience Project, specifically focusing on the Farmer organisations in Luiza and Kazumba territory. In Kananga alone, WFP is targeting **101,000 people** to receive CBT in 2023 with a transfer value of USD 14 per beneficiary per month. Criticism of WFP causing scarcity of basic commodities in the market and further driving price increases has been refuted as the organisation has not purchased any commodities in Kasaï. For nutrition, WFP reached **49,000** children and PLW/Gs with malnutrition treatment and prevention supplies.
- **Tanganyika:** In December, WFP supported **120,000 people**, with in-kind assistance, nutrition treatment and supplies. In-kind assistance reached **91,000** people, including 280 Congolese returnees. It completed the data collection for the end-line survey on food project protection for USAID Bureau for Humanitarian Assistance (BHA) in Moba, and Nyunzu territories. CBT distributions are under preparation in Pweto and will commence in the second week of January, targeting 54,723 beneficiaries in Mutabi - Kabangu axis. The cash-for-asset project in Kabalo is being discussed with Trust Merchant Bank (TMB) seeking ways to avail cash-based resources. Additionally, the Kananga office reached **29,000** children and PLW/Gs with malnutrition treatment supplies.
- **North Kivu:** WFP reached **314,000 people** with general food distributions and malnutrition treatment supplies. In-kind distribution reached **242,000 people**. CBT distributions reached **63,000 people**. Road National 2 (RN2) is still cut off in Rutshuru, and the Masisi-Kitchanga alternative route has deteriorated under poor weather conditions. WFP's food distribution to Beni is still limited. However, commodities are now being transported via Rwanda and Uganda. The SCOPE – WFP's beneficiary information and transfer management platform – registration in Nyiragongo is ongoing and is 60 percent near completion. WFP assisted **8,000** children and PLW/Gs with malnutrition treatment supplies.
- **Ituri:** In December, the Bunia office reached **248,000 people** with in-kind assistance, cash support and malnutrition prevention and treatment supplies. General food distributions reached **42,000** people, including 3,132 South Sudanese refugees. WFP is negotiating with the beneficiary steering committee following a demonstration in the past weeks at the Bunia offices due to commodity shortages. WFP engaged provincial authorities to manage and communicate with beneficiaries about the challenges of providing humanitarian assistance. CBT reached **151,000 people** and WFP is exploring alternative ways to mobilise cash resources for distribution in the second week of January 2023. WFP assisted **54,000** children and PLW/Gs with nutrition prevention and treatment supplies. The Bunia office reached a small contingent of beneficiaries due to limited humanitarian access and insecurity. Additionally, the two health zones, Aungba and Biringi, are yet to receive nutrition commodities due to supply chain delays. Deliveries are slow due to road challenges which have worsened with the rainy season.
- **South Kivu:** The Bukavu office assisted **92,000 people** with in-kind assistance and malnutrition treatment supplies. WFP assisted **43,000 people** with in-kind assistance. The broken Makelele and Luzira bridges have affected the flow of humanitarian assistance and commercial activities. Consequently, WFP commodities are being shipped by boat from Bukavu to Minova. WFP activities faced delays in Walungu territory, where trucks are stuck on muddy roads, delaying distributions further. Over 60 participants, including 15 women and 47 men, received training on the Prevention of Sexual Exploitation and Abuse (PSEA). WFP, in collaboration with *Action pour le Développement Intégral de la Jeunesse et de la Femme* (ADIJF), trained 425 people who are members of Farmers' Organisations on post-harvest management and storage techniques in the villages of Luvingi in Uvira territory. Moreover, **49,000** children and PLW/Gs received nutritious products to treat malnutrition.

Supply Chain

- **Procurement:** Contracts for the local procurement of 13,000 mt of maize meal, pulses and salt are being finalized, and deliveries are expected to start in the second week of January 2023.
- **Bilateral Services Provision (BSP):** WFP successfully transported COVID-19 vaccines for the Government of DRC in Kinshasa and Lualaba province as part of the Ministry of Health, Mastercard Foundation and Centre for Disease Control Africa, Saving Lives/Livelihoods project.

Clusters and Common Services Logistics Cluster

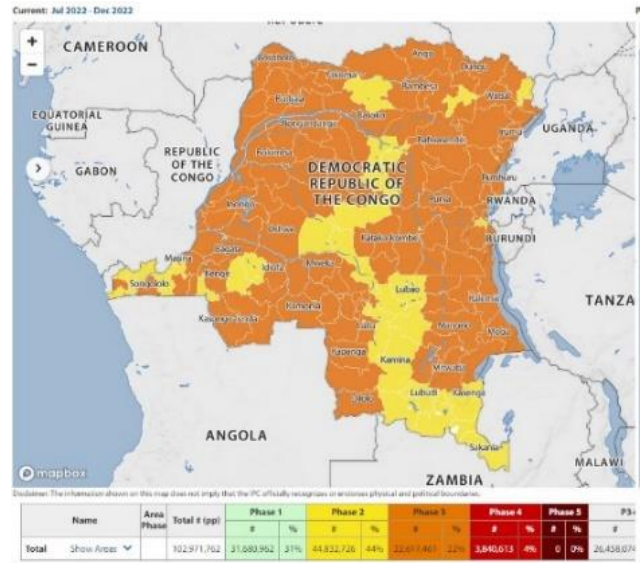
- **Information Management/Geographical Information Systems:** The Logistics Cluster shared documents and operational maps on the dedicated [portal](#). The cluster monitored and shared physical access alerts on drc-logs@logcluster.org

✈️ UN Humanitarian Air Service (UNHAS)

- **Operational Overview:** UNHAS regular and special flights transported **3,082 passengers** and **44.45 mt** of essential light cargo.
- On 18 December, UNHAS received a new helicopter providing flights between North and South Kivu.
- **Medical Evacuation:** UNHAS evacuated five people from Agro-Action and Médecins Sans Frontières - Hollande (MSF-Hollande) from Mahagi, and Walikale in Ituri province.
- **Special Flights:** UNHAS conducted seven flights from Bukavu and Kalemie for *Mission de l'Organisation des Nations Unies pour la stabilisation en République démocratique du Congo* (MONUSCO), *Médecins Sans Frontières - Espagne* (MSF-Espagne), UNICEF and WFP.
- **Fuel Situation:** UNHAS locations have sufficient fuel reserves.

for contributing USD 6.5 million towards emergency food and nutrition assistance in DRC. The press release can be accessed [here](#).

Acute Food Insecurity Situation: July -December 2022



Communications

- WFP prepared its Year in Review, detailing the number of people reached with assistance throughout 2022, and the challenges and opportunities in 2023 to reach more people in need. The video is accessible [here](#).
- WFP issued a press release thanking the Government of Japan

WFP thanks the following donors who contributed resources in 2022:



Contacts

- Peter MUSOKO, Country Director: peter.musoko@wfp.org
- Courage Nyamhunga, Reports Officer: courage.nyamhunga@wfp.org
- For further information, visit the Democratic Republic of Congo page [here](#).