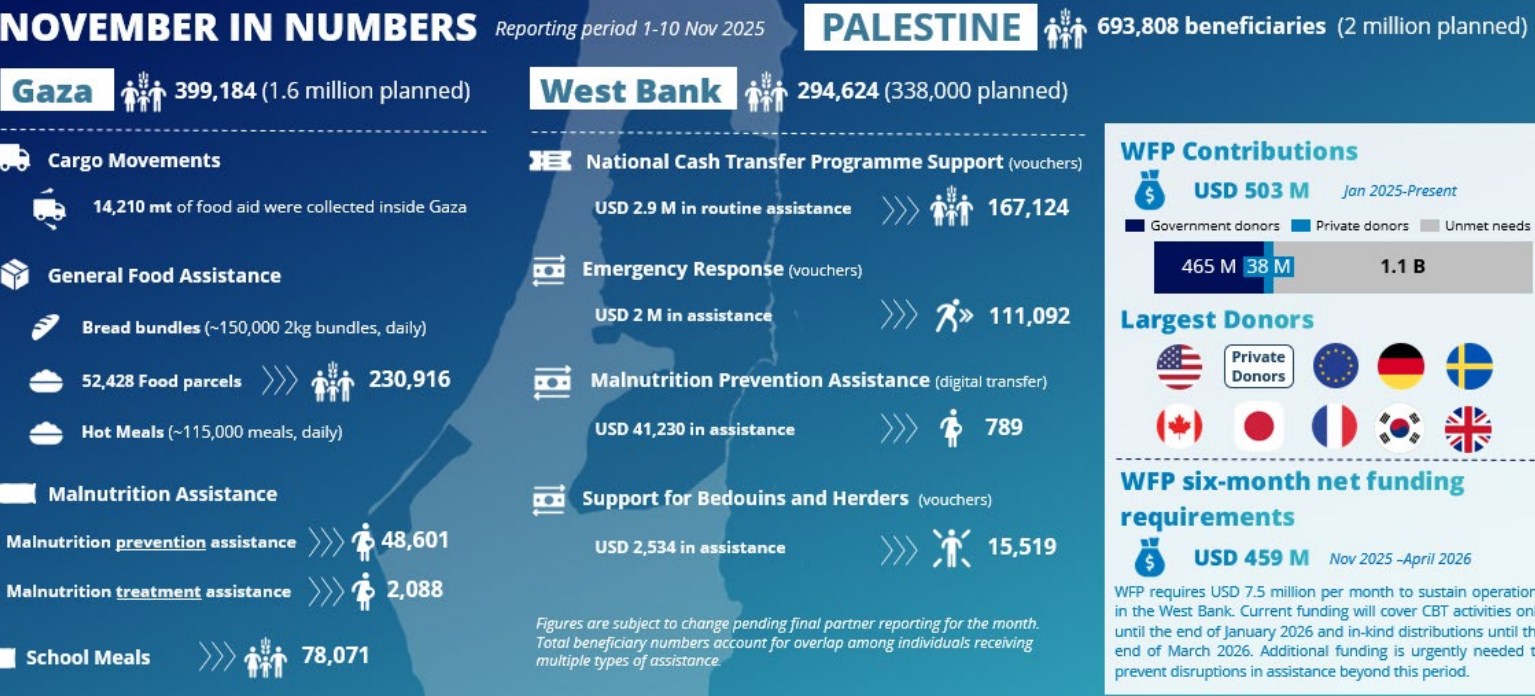


WFP PALESTINE EMERGENCY RESPONSE
External Situation Report 72

17 November
Reporting period: 1-10 Nov 2025

HIGHLIGHTS

- Over a month into the ceasefire, WFP delivered more than 30,000 mt of food in Gaza and rapidly scaled up operations. However, during the reporting period, shortages of some commodities due to access constraints, including de-prioritization of humanitarian cargo at crossings, customs clearance delays, corridor suspensions, and the continued lack of access to northern crossings, led to temporary suspensions at several distribution sites, resulting in roughly 20 percent reduction in volumes. This underscores the fluidity of the operational environment and demonstrates what WFP can achieve when access is ensured.
- WFP has the food, systems, and teams ready to deliver at full scale. What is needed now is a ceasefire that holds and guarantees uninterrupted humanitarian access. With consistent, sustained access, WFP can feed up to 1.6 million people for three months with emergency food assistance at scale, while also supporting the recovery of food systems and restoring dignity through digital payments.
- On behalf of the humanitarian community, WFP is securing new warehouse space, expanding fuel storage in Gaza City, and clearing rubble and roads to improve the movement of life-saving cargo. Through its logistics network, WFP is coordinating trucking and transport for partners to ensure every available opportunity is used to deliver assistance safely and efficiently.



SITUATION UPDATE

- Despite improvements in humanitarian access, challenges persist. During the reporting period, aid flowed mainly through two crossings- Karam Abu Salem/Kerem Shalom (KS) and Kissufim. Access routes within Gaza are constrained to a narrow corridor, and key items continue to face rejection or delay. Widespread shortages of shelter materials, electricity, and essential goods persist, leaving much of the population in acute need despite the limited relief delivered under the ceasefire.
- Overall, since 10 October the Site Management Cluster (SMC) partners recorded more than 690,000 movements of people, including over 580,000 crossings from southern to northern Gaza and more than 113,000 movements from westerns to eastern Khan Younis. These large-scale internal movements highlight the continued volatility of the situation and the challenging living conditions faced by displaced communities even under the ceasefire.
- The humanitarian situation in the West Bank has sharply deteriorated, marked by escalating settler violence, widespread displacement, and intensified demolition activities. October 2025 saw the highest level of settler attacks since records began, disrupting livelihoods—particularly during the olive harvest—and fuelling insecurity across multiple governorates. Communities, including Bedouin and refugee populations, face mounting risks of displacement as demolitions and movement restrictions persist. Humanitarian needs continue to rise amid underfunded response efforts, with less than half of required resources available to address the growing crisis.

PROGRAMME UPDATE (1-10 November)



General Food Assistance in Gaza

- **As of 10 November, WFP has reached nearly 240,000 people, providing two food parcels per family, covering only about 50 percent of daily caloric needs.** During the reporting period, only 11 of 47 distribution points were operational due to commodity shortages, forcing ration adjustments and substitutions. Although commodities are available at the corridors, access constraints and delays have limited distributions to roughly half the planned pace.
- **In November, a total of 22 community kitchens are operational: 11 in the south, 10 in the middle area, and 1 in the north.** Additional kitchens are expected to resume operations in the coming days, pending the delivery of commodities.
- **WFP's 19 operational bakeries, including nine in the north, produced 1.37 million bundles (2 kg each).** All bread is either distributed for free or sold at a subsidized price through contracted retailers. In total, distribution took place through more than 400 points across the Gaza Strip, including 71 subsidized retailers - up from 43 - to enhance coverage and support market recovery across the Gaza Strip.



Malnutrition Assistance in Gaza

- **As of 10 November, malnutrition prevention assistance was delivered across 82 active sites, while treatment services were provided at 26 sites.** Efforts are underway to integrate treatment activities into UNRWA maternity clinics to improve accessibility and strengthen service coordination.
- In collaboration with UNICEF and UNRWA as well as the Education Cluster, **WFP supported over 78,000 children in 89 active Temporary Learning Spaces (TLS)** within shelters by providing nutritious snacks, including fortified biscuits and date bars.



General Food Assistance in the West Bank

- In November so far, nearly **111,100 people received emergency food vouchers** as part of WFP's shock response plan. WFP's **regular voucher programme supported over 167,000 vulnerable people** (ILS 50/USD 14.5 per person) to improve food security and dietary diversity.
- Through the **First 1000 days' Programme** that aims to support maternal and child health, **789 women** received cash top-ups (ILS 128/USD 37.12 per woman) to meet higher nutritional needs.
- As part of the new hybrid assistance approach, **15,519 Bedouins and herders living in Area-C communities received food vouchers for the first time**, combining vouchers and in-kind food support. Under this model, households receive one month value of food vouchers followed by two months of in-kind assistance, continuing the quarterly distribution cycle.



SUPPLY CHAIN

- Despite the ceasefire, aid deliveries to Gaza remain severely constrained due to the de-prioritization of humanitarian

cargo at crossings, slow and inconsistent customs clearance, corridor suspensions, arbitrary rejections, and the continued lack of access to northern crossings.

- The closure of the Salah ad-Din route has forced convoys onto the congested Philadelphi and Al-Rasheed roads, increasing security risks and exposure to looting.
- Continued fuel access and approval for essential logistics equipment remain critical to sustaining humanitarian operations across Gaza.
- Between 1 and 10 November, WFP offloaded 483 trucks (nearly 9,400 mt of food) at crossing platforms via the various corridors. Inside Gaza, 882 WFP trucks, carrying nearly 14,210 mt of food aid were collected.

CLUSTERS AND COMMON SERVICES



Food Security Sector (FSS)

- As of 10 November, 1.27 million meals were prepared and delivered daily by 23 partners operating 194 community kitchens.
- Since 15 October, about 530 mt of concentrated animal fodder has been collected from the crossing. Distribution to 1,700 herders in Deir al Balah began on 10 November, following a previous round completed in early November (three × 50 kg bags per herder).



Logistics Cluster (LC)

- During the reporting period, 1,479 trucks from 16 partners were manifested for Israeli authorities' approval, of which 982 were offloaded in Gaza.
- The Cluster facilitated the collection of 4,331 pallets of shelter, WASH, and food items from KS entry point, for six partners, and provided access to five Back-to-Back (B2B) convoys from Jordan for five partners, resulting in 67 trucks offloaded at KS.
- The cluster received 1,810 m³ of aid for common storage inside Gaza. With access restored to the northern warehouse, there are now two common operational storage facilities in the north and middle areas.
- The latest Gaza Humanitarian Storage Capacity Survey recorded participation from 25 organizations, identifying 70 warehouses across Gaza with a combined storage capacity of over 148,000 m². Only 40 percent of this capacity is operational.
- UN/INGO cargo continues to face repeated rejections from the West Bank. Israeli authorities now require a minimum of 40 trucks per UN/INGO convoy to cross exclusively via Tarqumiyah.
- From the Egypt route, as of 9 November, Israeli authorities have reduced the number of authorized UN/INGO through Nitzana from 100 to 40 per day.