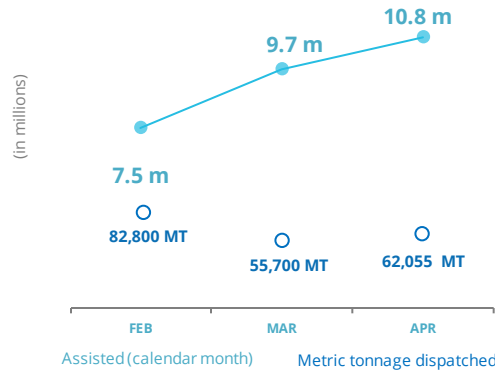


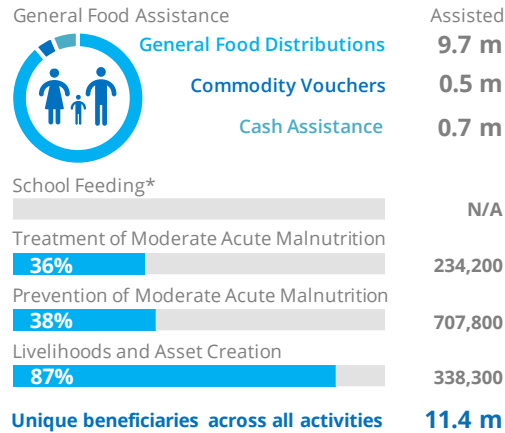
PEOPLE ASSISTED & MT Dispatched

General Food Assistance (GFA)



OPERATIONAL PROFILE

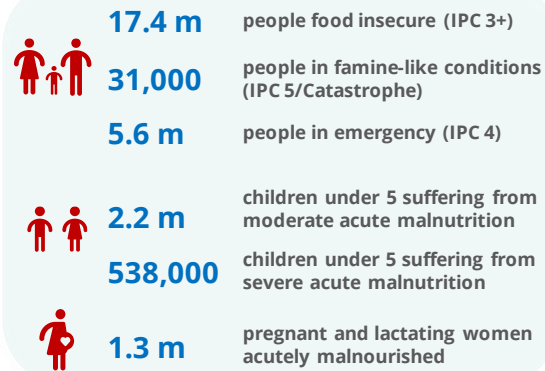
By Activity (April)



*The 2021-2022 school year in Yemen ended in March. SOURCE: WFP, MAY 2022

PEOPLE IN NEED

2022 IPC Analysis



SOURCE: IPC (JANUARY - MAY 2022)

FUNDING

Yemen Interim Country Strategic Plan (ICSP)

June - November 2022

US\$ 1.50 bn

Net funding requirements

2022 RESPONSE

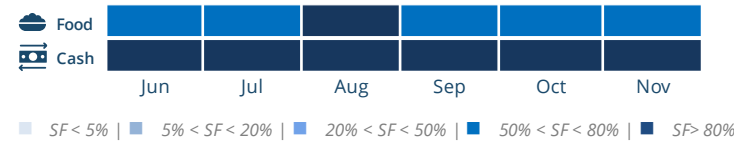
Requirements: US\$1.98 bn
Confirmed Contributions: US\$463.9 m

AVERAGE MONTHLY FUNDING REQUIREMENTS

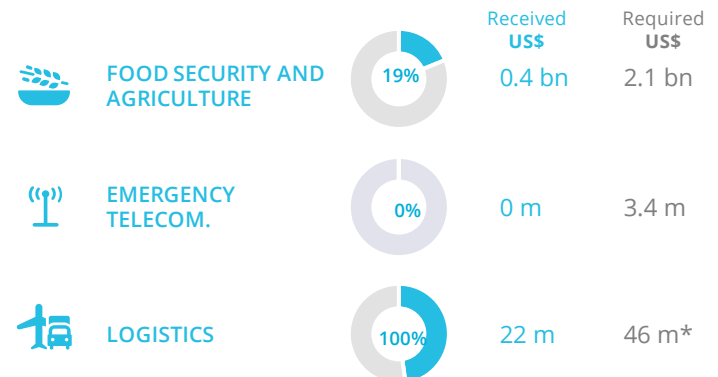
(6 Months - US\$)



EXPECTED SHORTFALLS (SF)

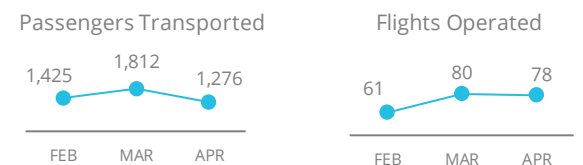


WFP-LED AND CO-LED CLUSTERS



*Based on updated implementation plan

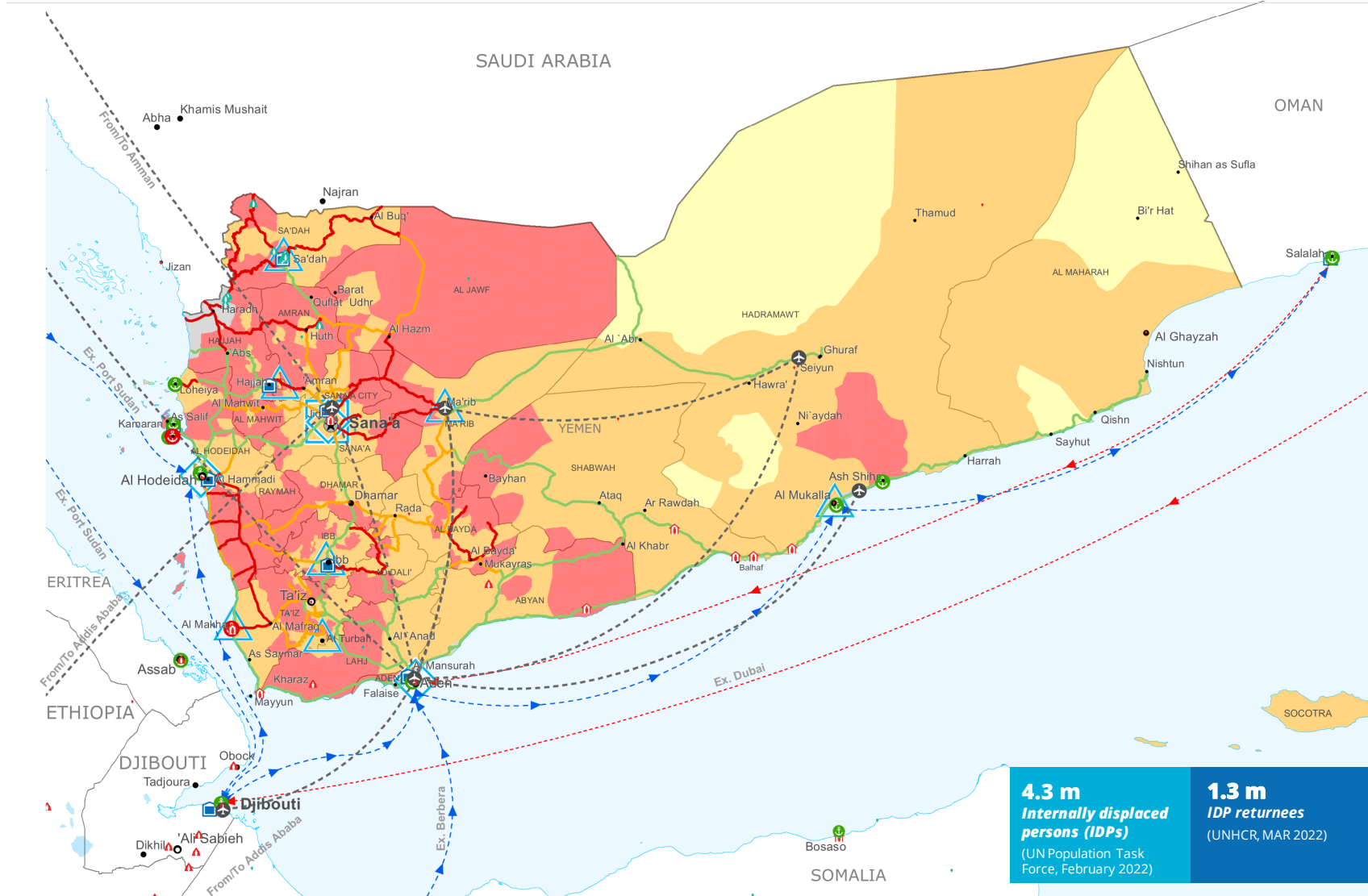
UN HUMANITARIAN AIR SERVICES (UNHAS)



WFP EMERGENCY CLASSIFICATION: Corporate Attention



For more information, see WFP Yemen page [here](#)



4.3 m Internally displaced persons (IDPs)
(UN Population Task Force, February 2022)

1.3 m IDP returnees
(UNHCR, MAR 2022)

Integrated Food Security Phase Classification (IPC) analysis, January - May 2022



Sources: WFP, UNGIWG, GAUL, GLCSC, OCHA, UNHCR. The designations employed and the presentation of material in the map(s) do not imply the expression of any opinion on the part of WFP concerning the legal or constitutional status of any country, territory, city or sea, or concerning the delimitation of its frontiers or boundaries. © World Food Programme 2022.