

WFP PALESTINE EMERGENCY RESPONSE

Situation Report 22

29 May 2024

HIGHLIGHTS

- The situation in Gaza remains critical, with urgent humanitarian needs persisting. WFP emphasizes the importance of safe, sustained, access to address food insecurity and basic needs and to ensure that nutritious and diversified food reaches those most vulnerable.
- Nearly a million people have been displaced from Rafah in recent weeks, seeking food and water in overcrowded central Gaza. Despite increased food distributions in northern Gaza due to improved access, conditions are rapidly deteriorating in central and southern Gaza. Additionally, fuel shortages hinder hospitals, water desalination plants, and basic services.
- There is an urgent need for both Rafah and Kerem Shalom crossings to be operating at their full capacity. While the maritime corridor and northern crossings are essential, they cannot replace the scale and geographical coverage of Kerem Shalom and Rafah. To ensure uninterrupted access to food, all routes and entry points must remain open, not just for weeks but for months.
- Despite these challenges, WFP has been able to reach an estimated 1.2 million people across Gaza so far this month, with reduced rations due to access constraints and restrained stock availability.

MAY IN NUMBERS



1.4 million people

assisted with general food assistance across Gaza and the West Bank by 25 May.



549 WFP Trucks

delivered carrying 7,294 MT of food into Gaza in May, bringing the total to 5,597 trucks carrying around 96,327 MT since the start of the crisis.



2024 funding status

Needs resourced Needs-based requirement

USD 191 M

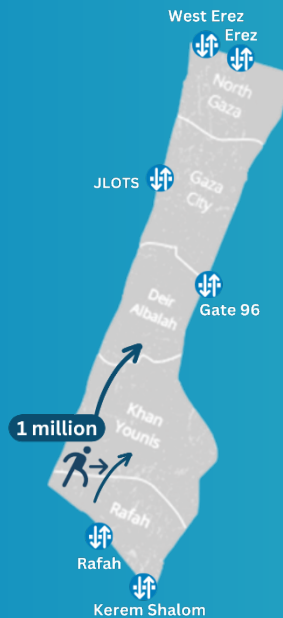
USD 341 M

By end of 2024



1.1 million

affected people targeted monthly by WFP emergency assistance in Gaza.



- Nearly 1 million people have been displaced from Rafah since the incursion into overcrowded shelters and streets in central Gaza, which lack basic services.
- WFP's main warehouse in Rafah, which had been inaccessible due to insecurity, was looted on 28 May, resulting in a total loss of WFP stock.
- The limited functionality of Kerem Shalom for aid and inaccessibility of Rafah continues posing severe challenges.
- West Erez is functional, but not sufficient. Gate 96 and Erez crossings are not operational for WFP.
- The aid entering through the maritime corridor (JLOTS pier) has been insufficient in the face of increasing needs.

SITUATION UPDATE

- Northern Gaza, which was the epicentre of catastrophic hunger level warnings, is now improving thanks to better access in the past month. However, in turn, **central and southern areas, are starting to see a deterioration.**
- Most of WFP partners and humanitarian agencies are displaced in the middle areas and with very limited capacity to reach people in Rafah.
- **Sustained fuel flow** is vital for essential services such as transportation, water supply, healthcare, and sewage systems. Without reliable fuel, these critical services are at risk of disruption.

WFP OPERATIONS



General Food Assistance (GFA)

- Between 1 and 25 May, WFP reached an estimated **1.4 million vulnerable people*** with in-kind and cash-based general food assistance across Gaza and the West Bank. In **Gaza Strip alone**, WFP reached **1.2 million people.**
- In the Gaza Strip, WFP distributed around **190,000 food parcels** enough to last for 10 days, and **203,974**

**The total beneficiaries figure accounts for overlap between people receiving more than one type and duration of assistance. Please note these figures are preliminary and subject to change upon confirmation.*

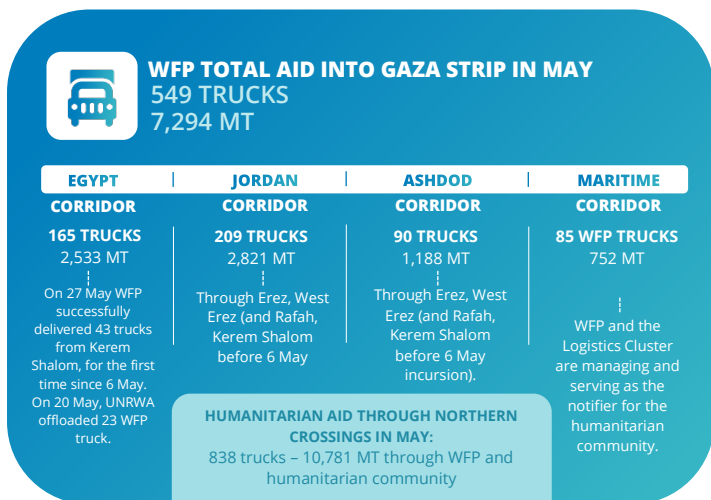
bags of 25kg of wheat flour for internally displaced persons (IDPs) in UN-designated shelters, informal camps and within host communities, to approximately **1 million people**.

- During the reporting period, WFP provided around **7.7 million hot meals to 347,578 people** through a network of 71 community-kitchens. 50 percent of hot meals were distributed in Deir Al Balah and Khan Younis.
- In May so far, **18,336 pregnant and breastfeeding women and 44,926 children under five** received Lipid-based nutritional supplement (LNS) as complementary feeding assistance to meet their increased nutritional needs.
- In the **West Bank**, as of 25 May, WFP provided **161,000 people with their cash-based transfers**, 89% of which redeemed (143,064) and **38,500 people** received quarterly in-kind rations.



Supply Chain

- Since the onset of the crisis and until 27 May, WFP delivered **5,597 trucks** carrying around **96,327 MT** into Gaza.



CLUSTERS AND COMMON SERVICES



Food Security Sector

- The sector is actively mapping out hot meal kitchens to identify gaps and overlaps, ensuring families in need can access nearby hot meal provision points.
- Partners are **gradually resuming food parcel distribution in Deir al Balah and Khan Younis**. Food commodities are brought into the south through JLOTS and Kerem Shalom crossings.
- **11 bakeries are operational** out of a total of 17 supported by humanitarian partners. The other 6 bakeries in southern Gaza remain closed due to cooking gas shortages and ongoing hostilities.

- Limited access to financial services and insufficient cash liquidity continue to hinder the food security response. Partners face challenges in covering day-to-day operations due to cash availability limitations.



Logistics Cluster

- As of 23 May, the Logistics Cluster has received 31,687 m³ of cargo from 32 organisations in Gaza for storage across the four common warehouses. At the Rafah Transshipment Point, the Logistics Cluster has also supported 32 humanitarian organisations with cargo notification services.
- As part of the Jordan corridor, the Logistics Cluster has supported humanitarian organisations with cargo consolidation services in Amman for 8,884 m³ of humanitarian aid, and by facilitating access to 48 convoys dispatching 1,176 trucks to Gaza on behalf of 18 partners delivering 16,705 mt of cargo to Gaza. The ninth direct convoy of 43 trucks was dispatched on 22 May with food, WASH and shelter items on behalf of WFP and two partners. All the convoy information is available on the [interactive dashboard](#).
- On 19 May, the Logistics Cluster team finalized the installation of two Temperature-Controlled Units (TCUs) in Durgham 2 area. These assets will further expand the Egyptian Red Crescent (ERC) storage capacity by 640 m², with additional dedicated space of 320 m² for temperature-sensitive items, such as health and medical items.

Emergency Telecommunications Cluster (ETC)



- Due to the prevailing escalated hostilities, the local mobile and internet operators are experiencing network outages from damaged infrastructure, limited access to fuel, and insecure conditions to carry out repairs, making it difficult to maintain the remaining functional network. This is worsening as displaced people relocate from Rafah to the North. Satellite phone voice services are operational across the Gaza Strip.
- The ETC is working with OCHA to set up common internet services to support the relocation of humanitarian responders to Deir Al Balah from Rafah.



ACCOUNTABILITY TO AFFECTED POPULATIONS

- WFP's self-registration link to improve data collection and beneficiary management, attracted **195,131 new registrations** in May so far, 545,763 in total.
- WFP's **inter-agency hotline** available for people requesting and inquiring about humanitarian assistance answered **28,157 calls** in May so far, 57 percent pertaining to the self-registration link.