

# WFP PALESTINE EMERGENCY RESPONSE

## External Situation Report 35

Moa'ad is enjoying a freshly baked loaf of bread. WFP/ Ali Jadallah

### HIGHLIGHTS

- The situation in northern Gaza is escalating at an alarming rate. Thousands of families have been forced to flee yet again, all hot meal kitchens operated by WFP partners have shut down, and the only WFP-supported bakery in Jabalya caught fire. The main crossings into the north have been closed, and [no food aid has entered northern Gaza](#) since 1 October.
- In Gaza City and in three shelters in Jabalya, WFP managed to distribute canned food, commodities for hot meals, nutrition supplements, and fortified biscuits to partners, shelters, and kitchens. However, available stock will only last for approximately 15 days.
- No WFP general food distributions were held across Gaza in October due to limited supplies, while hot meals and bakeries are still supported but at risk of shutting down.
- Extremely limited aid enters Kerem Shalom crossing and WFP faces increased insecurity and attacks on its trucks, fueled by desperation and the collapse of public order and safety.

### SEPTEMBER IN NUMBERS



**938,621 people**

assisted with general food assistance across Gaza and the West Bank.



**703 WFP Trucks**

delivered 11,653 mt of food into Gaza in September against the plan of 27,900 mt, bringing the total to 9,369 WFP trucks carrying at least 150,086 mt since the start of the crisis.



**WFP six-month net funding requirement**

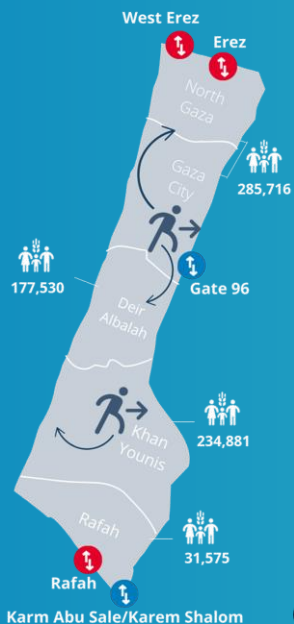
**\$ 166 M**

Oct 2024 - March 2025



**1.4 million**

affected people targeted monthly by WFP emergency assistance in Palestine.



### OCTOBER UPDATES:

- ONE YEAR INTO THE WAR**, aid entering Gaza is at its lowest while Israeli military operations persist amid a worsening Middle East crisis, with strikes in Lebanon and Yemen.
- Since the start of October, no one in Gaza has received WFP food parcels. The flow of essential goods into Gaza has been severely restricted. Bakeries face a daily risk of closure for lack of supplies and/or fuel.
- Hot meals continue, with around 1.4 million meals distributed through 69 kitchens to 102,245 people in October so far.
- Evacuation orders have been issued for most areas in the north of Gaza. As a result, critical food assistance has been disrupted. All WFP-partner kitchens in north Gaza have been forced to shut down, and several partner warehouses are no longer accessible.
- On 8 October, one WFP-supported bakery in north Gaza caught fire due to the hostilities.



Crossing status (blue open, red closed)  
1-30 September GFA unique beneficiaries

### SITUATION UPDATE

- Heavy bombardment continues in the densely populated Jabalia camp in northern Gaza. Four new evacuation orders from the Israeli military in the northern region have impacted hundreds of thousands of people, displacing at least 70,000 individuals, and further restricting humanitarian access and the capacity to respond.
- September recorded the lowest volume of commercial and humanitarian supplies entering Gaza since March. The situation has worsened in October, with WFP only transporting 4 percent of the supplies required to meet the needs for the month.

### WFP OPERATIONS



#### General Food Assistance (GFA)

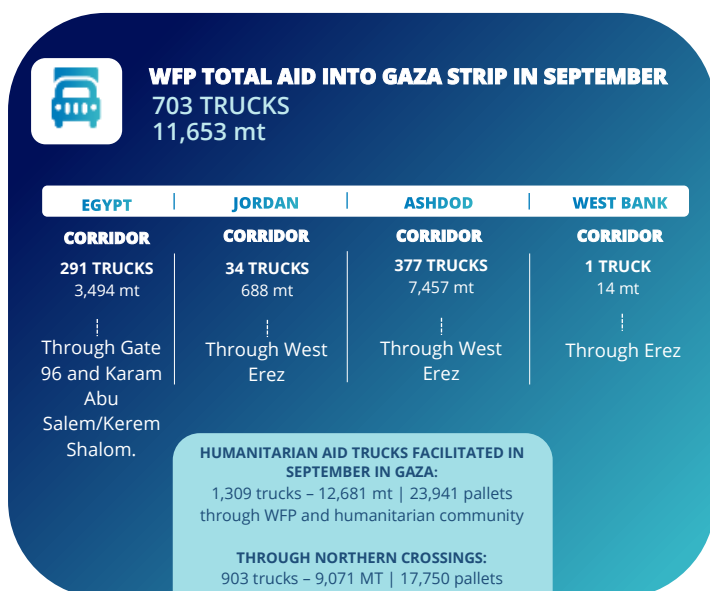
- In September, WFP provided in-kind and cash-based food assistance to approximately **938,621 vulnerable individuals across Gaza and the West Bank**. In the **Gaza Strip**, WFP reached **729,702 people** with reduced rations, due to the inability to replenish stocks amidst access constraints. *\*The total beneficiaries figure accounts for overlap between people receiving more than one type and duration of assistance. Monthly distribution figures are estimates and subject to change pending final beneficiary reconciliation.*
- In the Gaza Strip, WFP distributed **169,754 partial food parcels**, to **585,285 displaced persons** in shelters, informal camps, and host communities during September.

- Over **two million bread bundles** (6,810 mt) were supplied through 13 WFP-supported bakeries. However, critical fuel and yeast shortages remain.
- WFP provided over **10.2 million hot meals** through a network of 72 communities to **194,619 people**.
- 30,006 pregnant and breastfeeding women, and girls (PBWG), and 70,906 children under five (CU5)** received over 2.8 million lipid-based nutritional supplements (LNS) packs as complementary feeding assistance to meet their increased nutritional needs. In October so far, 25,383 PBWG and CU5 received 584,670 LNS.
- As of 30 September, 95 percent of vulnerable families receiving **multi-purpose cash assistance (MPCA)** redeemed their entitlements through five vendors in central Gaza, via e-wallets and cash distribution.
- In **the West Bank, 175,631 people** redeemed their cash-based transfers, allowing them to purchase food items from local stores. In October so far, 116,436 people their entitlements.
- 3,805 Gazan workers** stranded in the West Bank received a Multi-Purpose Cash transfer of 700 ILS (USD 185), of whom 91 percent redeemed their assistance.



## Supply Chain

- Since the start of the crisis, WFP has delivered 9,369 WFP trucks with at least 150,086 mt of food into Gaza.
- Until 5 October**, WFP delivered 47 WFP trucks carrying around 593 Mmt of WFP aid.



- Due to restricted aid access since July 2024, partners have had to further reduce food assistance in October.
- In preparation for the rainy season, partners began supplying used wheat flour bags from bakeries to Shelter and Site Management partners to produce sandbags. The first batch of 2,900 bags has been delivered.
- A recent assessment shows that, as of 1 September 2024, 67.6 percent of cropland was damaged. Khan Younis had the most extensive damage; Gaza Governorate had the most damaged wells and North Gaza had the highest proportion of overall damage. Rafah saw a 183 percent increase in damaged greenhouses due to military incursions.

## Logistics Cluster

- In October, all crossing points into northern Gaza have been closed.
- In September, despite intermittent operations and no personnel on the ground due to continuous mission denials, the Logistics Cluster continued activities at the Erez entry point. To date, a total of 5,422 mt of cargo has been uplifted and transported from Erez West and Erez to partners' warehouses in the north.
- Uplifting operations at Kerem Abu Salem/Kerem Shalom were not possible in September due to severe access and security constraints. To date, 44,013 m<sup>3</sup> of cargo have been received for common storage inside Gaza to date.
- In September, the Logistics Cluster facilitated one direct convoy from Amman to North Gaza, transporting 256 mt of food commodities. Further convoys were paused following the introduction of a new customs form, which was preliminarily accepted on 1 October. Convoy details are available on the [interactive dashboard](#).



## ACCOUNTABILITY TO AFFECTED POPULATIONS

- WFP's self-registration link to improve data collection and beneficiary management surpassed 1.2 million since its launch.
- WFP's **inter-agency hotline** available for people to request and inquire about humanitarian assistance logged **30,885 cases** in September. Between 1 and 5 October, 4,987 cases were recorded, 52 percent related to WFP assistance.

## CLUSTERS AND COMMON SERVICES



### Food Security Sector

- By the end of September, FSC partners had over 100,000 mt of food—enough to feed 2.1 million people for more than two months— stranded outside the Strip, urgently needing entry to prevent worsening food insecurity. Spoilage and infestation concerns are rising, especially for near-expiry items.