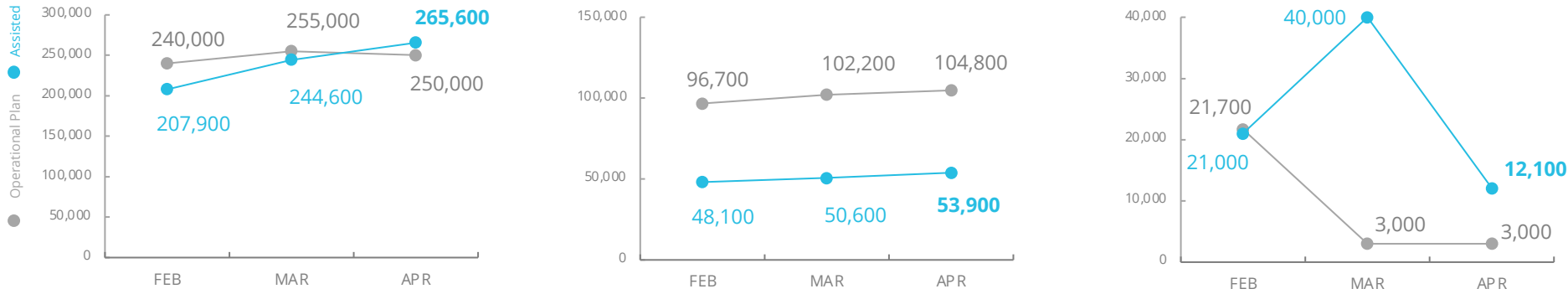


Sub-regional migrant crisis - Colombia, Ecuador, Peru

Emergency Dashboard | May 2021

PEOPLE ASSISTED BY WFP



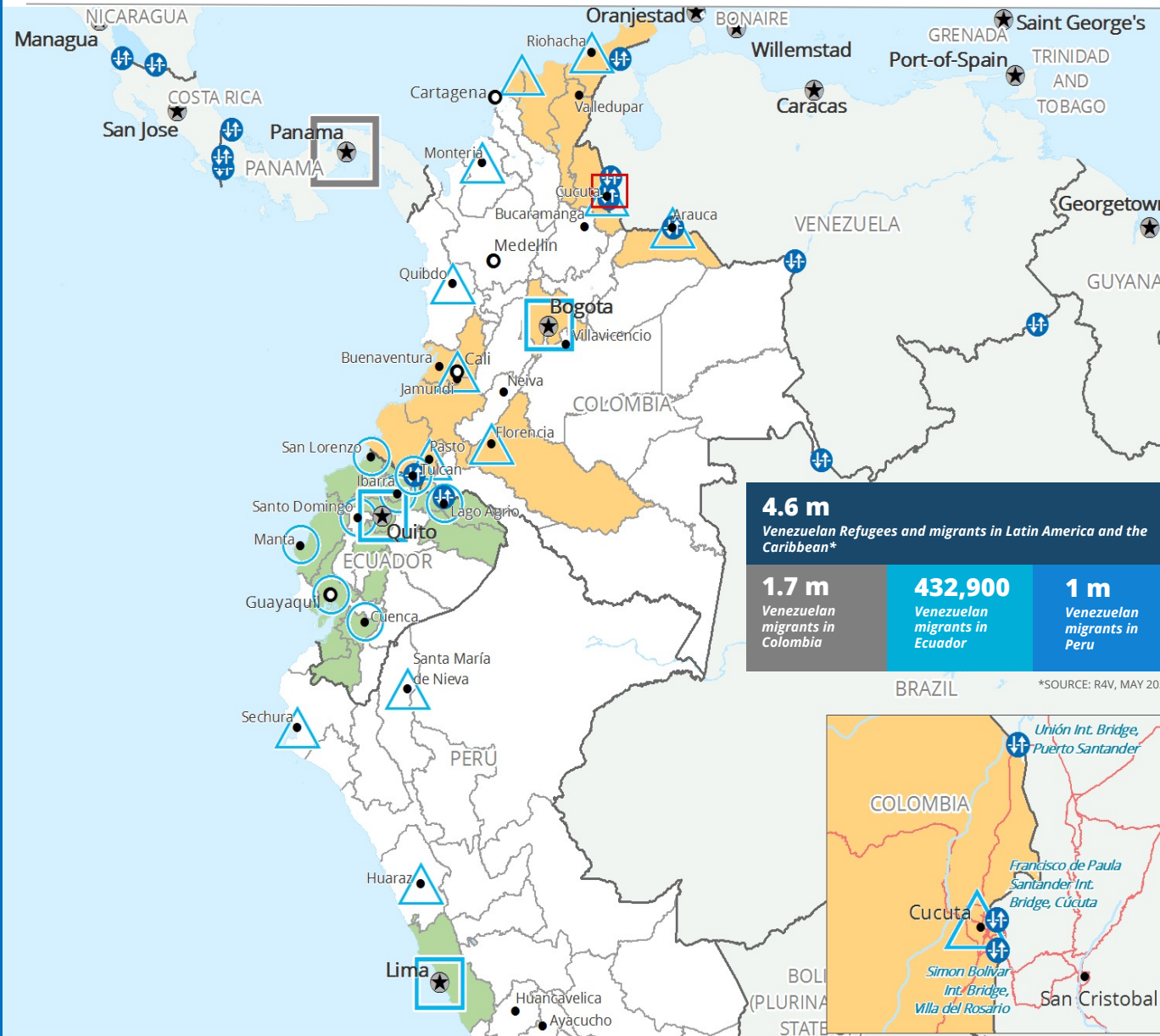
FUNDING

July 2021 - December 2021

Net Funding Requirements (US\$)

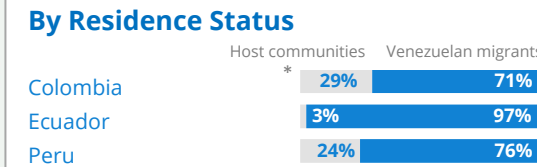
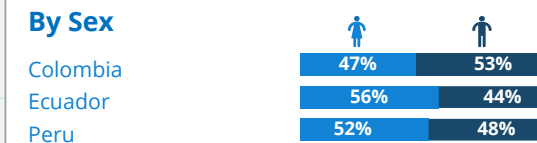
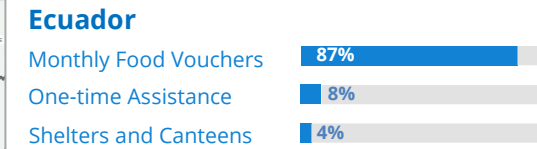
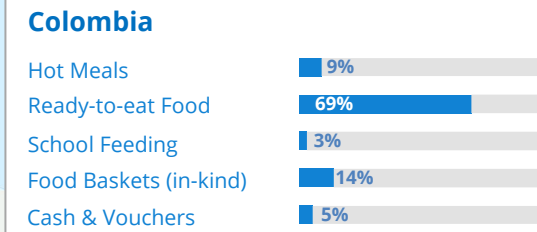
Colombia	79.9m
Ecuador	12.0m
Peru	26.3m
Total	118.2m

SOURCE: WFP, MAY 2021



OPERATIONAL PROFILE

Percentage of People vs Modality



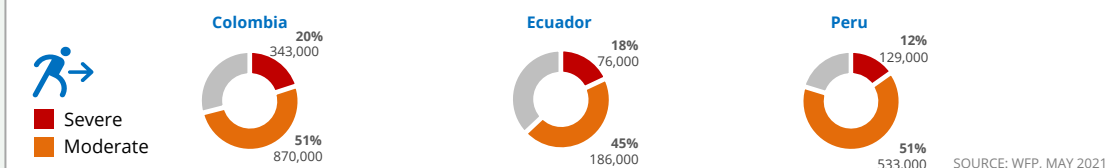
*The figure includes Colombian returnees SOURCE: WFP, MAY 2021

COVID-19 OPERATIONAL IMPACT

- Status**
- Colombia**
 - ✓ School feeding: Adaptation to take-home rations; Significant scale-up of food baskets (in-kind); Expansion of Cash and Vouchers as a safer deliver modality.
 - ✗ Hot meals: Most community kitchens are temporarily closed, smaller ones and those operating in shelters continue functioning.
 - ✓ Relief support to Venezuelan returnees through food kits; Emergency relief support in the Amazon region, including for indigenous populations; Expansion to urban areas, including cash assistance in Bogotá.
 - Ecuador**
 - ✓ Monthly Food Vouchers: Beneficiaries are still selected and assisted by phone. Strengthened assistance is given to the most vulnerable households with pregnant women and children. Due to the continuous COVID-19 restrictions, targeting new beneficiaries remains challenging.
 - ⚠ Shelters & Canteens: 26 out of 28 shelters and canteens assisted vulnerable population.
 - Peru**
 - ✓ Containment measures remain in place. Restriction levels vary per region, but does not have a significant impact on beneficiaries' capacity to redeem their cash assistance.

New: ✓ Ongoing: ⚠ Partially Suspended: ✗ Suspended: ✗

Percentage of Migrants Severely and Moderately Food Insecure



- Regional Bureau
- National Capital
- Border Crossing Point
- International boundaries
- Country Office
- Major Town
- WFP Operational Presence for L2 Response
- Department boundaries
- Sub Office
- Intermediate Town
- WFP Operational Presence related to the migrants crisis
- Field Office

WFP LEVEL 2 EMERGENCY SINCE 30 MARCH 2018. L2 EXTENDED UNTIL 10 DECEMBER 2021.

