



# WFP Democratic Republic of the Congo

## August Situation Report #40 – 22 September 2022

### Highlights

- On 31 August, 39 people died during incursions of the Allied Defence Forces (ADF) militia in Baiti and Ntombilo. In Southern Ituri Province, ADF skirmishes are complicating humanitarian access in Mambasa and Irumu territory. The growing insecurity is limiting humanitarian access and further delaying the joint WFP-UNICEF emergency operation in Banyabwihsa.

### Situation Update

- East African Community (EAC) Regional Task Force:** On 15 August, a Burundian contingent entered eastern DRC under the East African Community auspice. The recent deployment of EAC troops in the east and the semi-permanent nature of the presence of Burundian forces in South Kivu is fueling discontent among large sections of the population in the east, further complicating WFP operations in these territories.
- Insecurity:** On 18 August, a WFP food distribution was temporarily discontinued due to insurgents opposing the joint *Forces armées de la république démocratique du Congo* (FARDC) - *Uganda People's Defence Force* (UPDF) forces operation against the Allied Democratic Forces (ADF) rebels in Beni Territory.
- M-kengela Report:** The July market bulletin indicates that the food basket price increased by 26 percent between July 2021 and July 2022. Also, to note is the rising cost of maize meal and pulses by 40 to 50 percent in North and South Kivu for the month of August. This is because of poor harvests in those provinces and increases in fuel prices which have led to more demand and less availability. The impact is more apparent in major urban cities such as Goma, which experienced a 26 percent increase in the value of the food basket between February 2022 and July 2022. Additionally, in Kinshasa, the price of a litre of petrol rose from 1,995CDF to 2,495CDF, a 25 percent increase between March and July 2022. The rise in prices could have a knock-on effect on criminal activities, although the impact is unlikely to be immediate.

	<b>25.9 m highly food-insecure people</b> (51% female/49% male) (50% children/50% adults)
	<b>26 provinces affected</b>
	<b>5.7 m people displaced</b> (52% female/48% male) (58% children/42% adults)
	<b>6.3 m people reached in 2021</b> (59% female/41% male) (61% children/39% adults)
<b>Total 2022 funding requirements</b>	<b>US\$ 645.4 m</b>
<b>6-month Net Funding Requirements</b> (September 2022 – February 2023)	
Food Assistance	<b>US\$ 92.9m</b>
Nutrition	<b>US\$ 32.2m</b>
Other activities	<b>US\$ 25.6m</b>
<b>Total</b>	<b>US\$ 150.7m</b>

- Ebola Resurgence:** On 15 August, health authorities declared a resurgence of Ebola in North Kivu following a confirmed case, which resulted in the death of a woman in Beni.

### WFP Response

- Under the Country Strategic Plan 2021-2024, WFP continues its large-scale assistance targeting around **8.6 million** people with food and nutrition support in 2022.



#### Food and Nutrition Assistance

- Overview:** Throughout August, WFP reached **1,278,000** people with in-kind distribution, cash-based assistance, and nutrition activities. WFP assisted **731,000** individuals with in-kind distributions, and **184,000** people received cash assistance. WFP assisted **362,000** children and pregnant and lactating women and girls with nutritious products to treat and prevent malnutrition.

- **Tanganyika:** WFP reached **146,000** people with in-kind distribution and nutrition assistance. For in-kind distribution, **108,000** people received support, including 604 returnees from Zambia, bringing the total to 3,000 returnees. Cash transfers for July and August were put on hold due to the unavailability of cash and the finalisation of the new corporate processes for financial service providers. WFP reached **38,000** children and pregnant and lactating women and girls with nutritious products to treat and prevent malnutrition.
- **Kasai Central and Kasai Oriental:** WFP assisted **195,000** beneficiaries with in-kind distribution, cash transfer and nutrition support. In-kind assistance reached **54,000** people, a 100 percent achievement of the planned figure for August. Some **18,000** people received cash assistance in three health areas of Katende, Dimbelenge, and Munkamba. WFP provided **122,000** children and pregnant and lactating women and girls with malnutrition treatment and prevention supplies.
- **Kasai:** WFP supported **144,000** with in-kind assistance and nutrition supplies. Some **67,000** beneficiaries in conflict-affected territories received a half ration of pulses due to insufficient stock in the Tshikapa warehouse. WFP will begin to roll out cash assistance to over 78,000 people in mid-September. WFP provided **77,000** children and pregnant and lactating women and girls with nutritious supplies to treat malnutrition. Government authorities are still investigating the sale of nutrition products in the Mutena health zone, and a detailed report will be released in early October.
- **North Kivu:** WFP reached an overall of **297,000** beneficiaries with general food distributions, cash distributions and nutrition intervention. WFP distributed in-kind food commodities to **251,000**, despite the severe security constraints and new security measures imposed by provincial authorities. WFP discontinued its activities for two weeks because of clashes between the March 23 movement (M23) and government forces in the localities of Rangira and Ruseke. In August, approximately 18,685 people were displaced around Buhimba and Bwezi. WFP supported **26,000** beneficiaries with cash assistance in the Katoyi-Masisi territory. Some **19,000** children and pregnant and lactating women and girls received malnutrition treatment assistance.
- **Ituri:** WFP reached **365,000** beneficiaries overall. WFP distributed in-kind food commodities to **148,000** vulnerable people and notably 50,000 internally displaced people in Djugu. WFP distributed cash to **138,000** internally displaced people and refugees after four months since the introduction

of the new cash processing system (Purchase Order Cash Benefits). Additionally, **71,000** children and pregnant and lactating women and girls received nutritious products to treat and prevent malnutrition. In September, WFP plans to support 180,000 newly displaced people affected by the repeated clashes between Allied Defence Forces and rebels in the Komanda-Mambasa and Boga-Tchabi territory.

- **South Kivu:** WFP reached **135,000** people with in-kind assistance and nutrition supplies despite an alarming rise in armed group violence in the province. The insecurity challenges experienced in July restricted in-kind activities and led to a double in-kind distribution in August. Some **101,000** beneficiaries, including internally displaced people, returnees, and host families in Sebele, Fizi territory received in-kind assistance. WFP will resume cash-based assistance in mid-September, targeting 63,819 Burundians and internally displaced persons. WFP reached **33,000** children and pregnant and lactating women and girls with nutritious supplies to treat malnutrition.

## Supply Chain

- **Pipeline:** WFP has an in-country stock of approximately **24,000 MT** of various commodities. WFP expects to receive over **11,900 MT** of cereals and **6,600 MT** from the eastern and western corridors in late September.
- **Food Quality and Safety:** WFP trained 14 cooperating partners in the Kasais on Food Quality and Safety (FSQ) to reduce losses from FSQ-related issues.
- **Country Tracking Application (CTA):** WFP launched an online tool for warehouse stock management. It will track the transportation of Non-Food Items (NFI) within bilateral service provision (BSP) partners.

## Clusters and Common Services

### Logistics Cluster

- **Information Management/Geographical Information Systems:** The Logistics Cluster shared documents and operational maps on the dedicated [portal](#). The Logistics Cluster monitored and shared physical access alerts via: [drc-logs@logcluster.org](mailto:drc-logs@logcluster.org)

## Food Security Cluster (FSC)

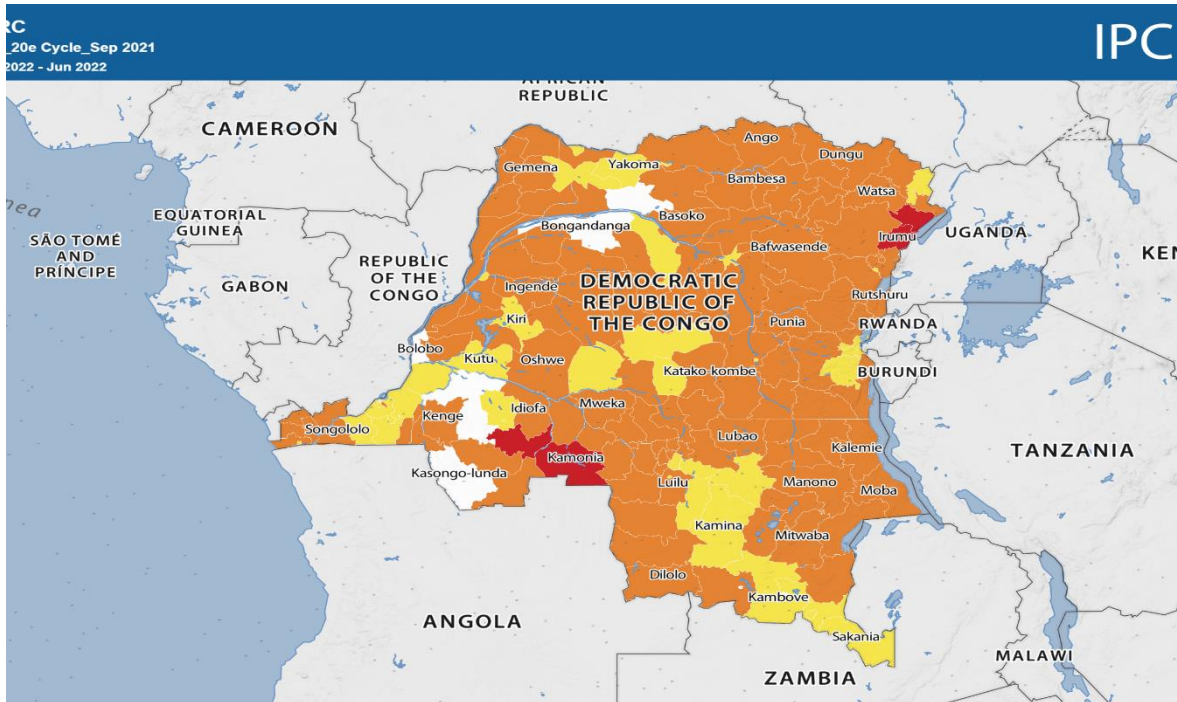
- **Humanitarian Response Plan 2023:** The 2023 Humanitarian Response Plan (HRP) process was launched. FSC is providing OCHA with key analytical inputs to support the prioritisation of decisions for the country.

## UN Humanitarian Air Service (UNHAS)

- **UNHAS Steering Committee Meeting:** In August, the Steering Committee agreed to a USD 50 reduction in the ticket fares for the Eastern Routes from USD 250 to USD 200.
- **Operational Overview:** In August, UNHAS and EU Humanitarian AirForce (EUHAF) transported **3,201** passengers and **49** MT of essential light cargo.
- **Medical Evacuations:** UNHAS conducted 14 evacuation flights out of Beni, Walikale, Bunia, Libenge, Kinshasa, Gemena, and Goma.
- **Special Flights:** UNHAS conducted eight special flights for *Comité International de la Croix-rouge* (CICR), Belgian Development Agency (ENABEL), *Deutsche Gesellschaft für Internationale Zusammenarbeit* (GIZ) and *Médecins Sans Frontières*- Operational Centre Barcelona (OCBA).
- **Fuel Crisis:** Fuel shortages continue to hinder UNHAS operations in Kinshasa, Mbandaka and the west of DRC. UNHAS has sufficient fuel stock for refuelling in Brazzaville, Ollombi and Bangui.

## Communications

- **WFP DRC Twitter:** The [@WFPDRC](#) Twitter account surpassed the **13,000** followers' mark.
- **Field Offices:** The Communications, Advocacy and Marketing (CAM) unit is supporting field offices in raising awareness of WFP operations and reinforcing WFP's principled approach, considering the anti-MONUSCO demonstrations.
- **World Humanitarian Day:** On 19 August, the communications team held [celebratory activities](#) in Bunia to commemorate World Humanitarian Day.
- **Communications Outreach:** CAM published key messages to intensify external engagement around [Sustainable Development Goal 2](#) (Zero Hunger) and further boosted the adoption of the community engagement strategy by cooperating partners.



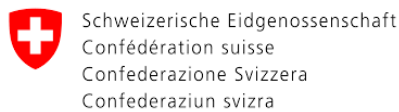
Food Insecurity

2 - Stressed 3 - Crisis 4 - Emergency 5 - Famine Famine Likely Areas with inadequate evidence Areas not analyzed

Information shown on this map does not imply that the IPC and CH officially recognizes or endorses physical and political boundaries.

IPC Security Phase Classification

### 2022 Donors



### Contacts

- Peter MUSOKO, Country Director: [peter.musoko@wfp.org](mailto:peter.musoko@wfp.org)
- Courage Nyamhunga, Reports Officer: [courage.nyamhunga@wfp.org](mailto:courage.nyamhunga@wfp.org)
- For further information, visit the Democratic Republic of Congo page [here](#).