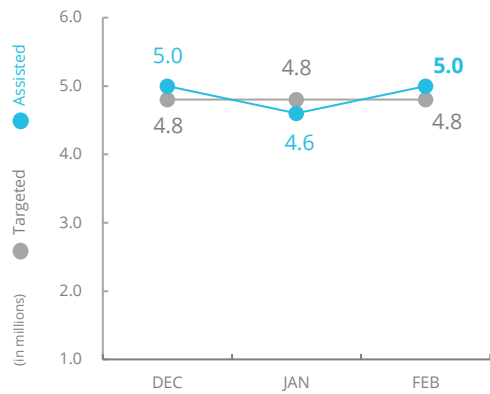


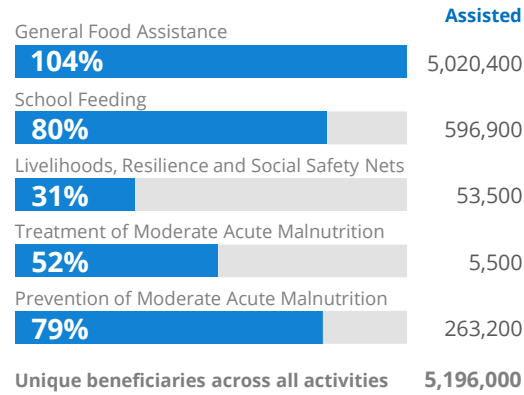
PEOPLE ASSISTED

General Food Assistance



OPERATIONAL PROFILE

By Activity (February)



SOURCE: WFP, 12 APR 2021

PEOPLE FOOD INSECURE



SOURCE: WFP 2020 Food Security and Livelihoods Assessment.

FUNDING

Syria Interim Country Strategic Plan (ICSP)

April - September 2021

US\$466.6m

Net funding requirements

2021 LEVEL 3 RESPONSE
Requirements: US\$1,160m
Funded: US\$337m



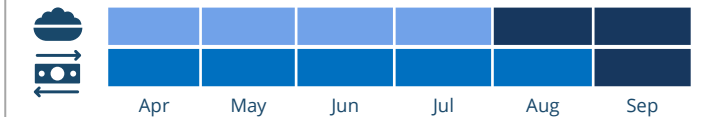
SOURCE: WFP, 26 MAR 2021

AVERAGE MONTHLY FUNDING REQUIREMENTS

(6 Months - US\$)



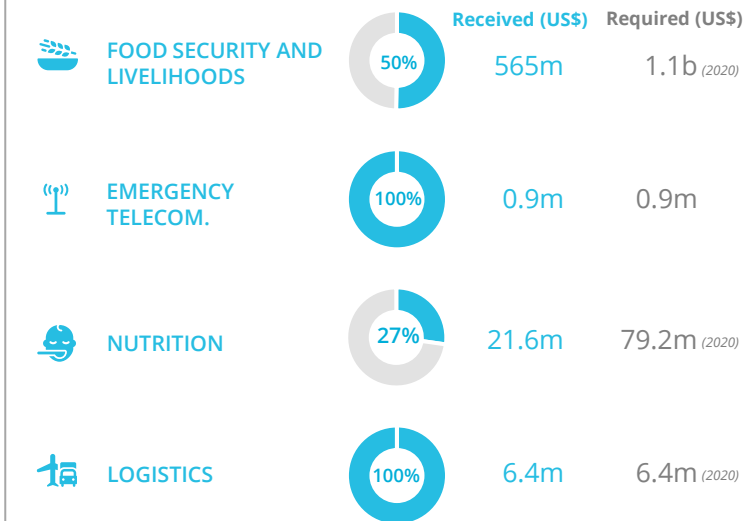
EXPECTED SHORTFALLS



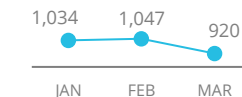
Legend: SF < 5% | 5% < SF < 20% | 20% < SF < 50% | 50% < SF < 80% | SF > 80%

SOURCE: WFP, 12 APR 2021

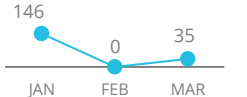
WFP-LED AND SUPPORTED CLUSTERS



Trucks Transhipped from Turkey

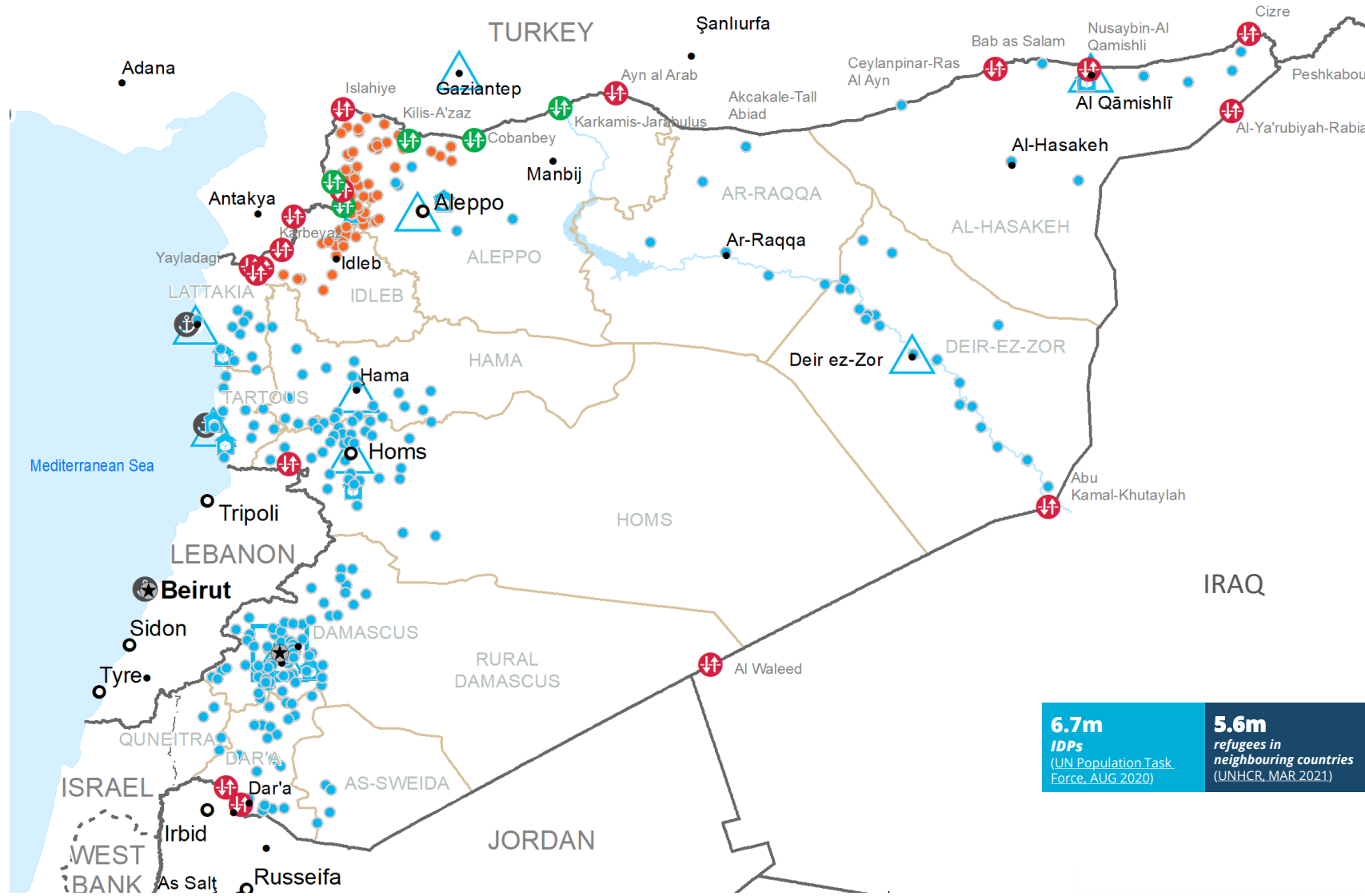


Relief Goods Stored (m³)



SOURCE: CLUSTERS, 12 APR 2021

SOURCE: WFP, 12 APR 2021



6.7m IDPs (UN Population Task Force, AUG 2020)
5.6m refugees in neighbouring countries (UNHCR, MAR 2021)

- Country Office
- Warehouse
- National Capital
- International Boundary
- Food Distribution Points (FDPs) February 2021
- Major Town
- Governorate Boundary
- Intermediate Town
- Armistice Boundary
- Regular Deliveries
- Cross-Border Deliveries
- Road Supply Route
- Open Border Crossings
- Open Border Crossings with Restrictions
- Closed Border Crossings
- Port

Approx. 50% of total FDP are displayed on this map.

Sources: WFP, OCHA, GLCSC, UNGIWG, UNHCR, Geonames
The designations employed and the presentation of material on this map do not imply the expression of any opinion whatsoever on the part of WFP concerning the legal or constitutional status of any country, territory, city or sea or concerning the delimitation of its frontiers or boundaries.
© World Food Programme 2020

