

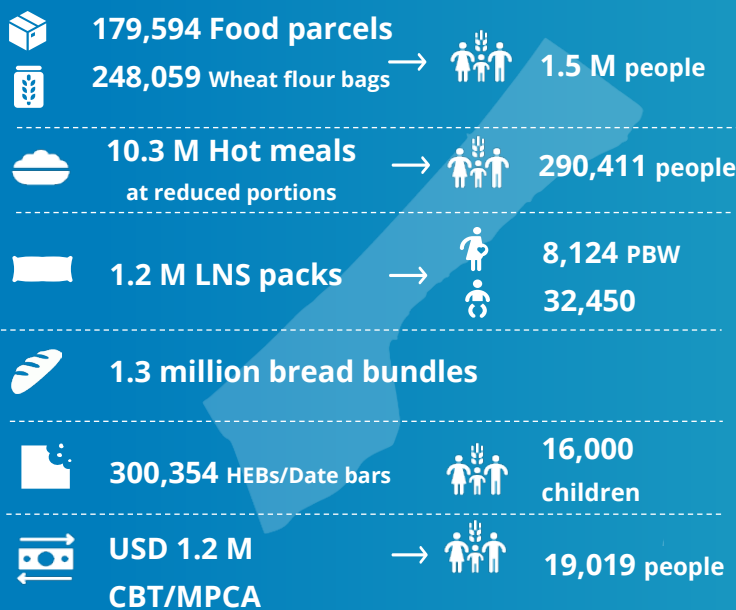
WFP PALESTINE EMERGENCY RESPONSE

External Situation Report 43

HIGHLIGHTS

- Repeated security incidents on humanitarian staff and supplies reflect a systemic failure that continues to obstruct humanitarian efforts and exacerbates the suffering in such a critical period. Last month, WFP reached some 1.5 million people in Gaza, the majority with only one bag of 25-kg wheat flour per family. This month, **WFP is not able to start food distributions due to lack of sufficient supplies.**
- For weeks now, nearly every movement of aid through Gaza southern crossings was subject to violence, and tragic deaths due to attacks and looting. Distributions rely fully on what comes in through the borders, and if more aid is not safely delivered inside Gaza, hot meals also risk shut down within days.
- WFP continues its effort to bring life-saving aid to the population, which continues to face a risk of famine, and appeals to all parties to the conflict to uphold their obligations under international humanitarian law, specifically to enable the protection of the civilian population, and safe passage of the humanitarian assistance they require for survival. Above all, a ceasefire is needed.

DECEMBER IN NUMBERS – December 2024



PALESTINE 1.8 M people reached (1.4 m planned)
GAZA 1.58 M people reached (1.1 m planned) with reduced rations

West Bank 218,618 people reached (338,000 planned)

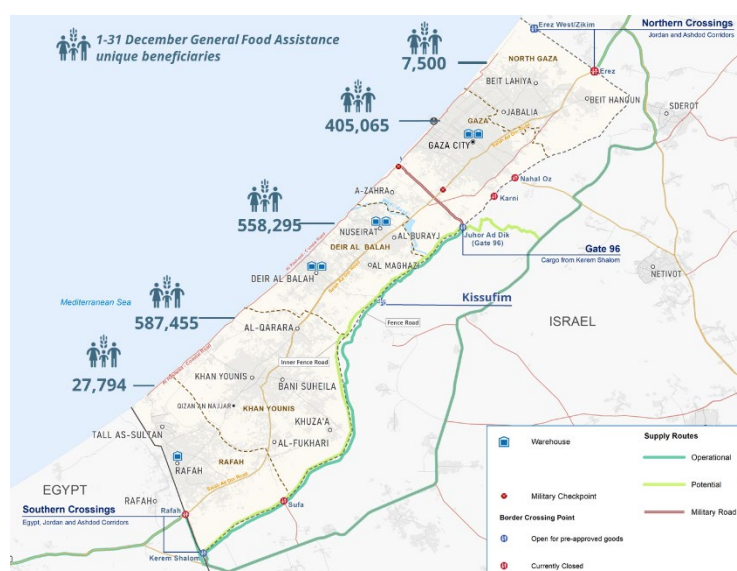
USD 2.7 M CBT Voucher → **186,043 beneficiaries**
17,547 In-kind/food parcels → **32,260 beneficiaries**

WFP six-month net funding requirement USD 125 M
 Jan - June 2025

These numbers are still subject to change due to the finalization of December 2024 reporting figures from partners. The total beneficiaries figure accounts for overlap between people receiving more than one type of assistance (LNS, HEB figures are not included). ACRONYMS: Pregnant and breastfeeding women and girls (PBWG) | Children under five (CU5) | High-Energy Biscuits (HEB) | Multipurpose Cash Assistance (MPCA) | Cash-based Transfers (CBT)

SITUATION UPDATE

- On 5 January, a WFP team in three armoured, clearly marked UN vehicles was shot at by Israeli forces near Wadi Gaza checkpoint, despite prior authorization to proceed. Sixteen bullets hit the cars, flattening tires and immobilizing them. No staff were harmed.
- Heavy rains and wintry weather further deteriorate the survival conditions of displaced families, with tents flooded and damaged, and at least five newborns reportedly died of hypothermia.
- Ongoing insecurity and attacks on aid trucks delivering food from southern and central crossings continue to limit entry of supplies, leaving over a million people without sufficient food, shelter, and medicine.



WFP OPERATIONS

General Food Assistance (GFA)

- In December, WFP has provided food and cash-based assistance to **1.58 million people in Gaza and 218,600 in the West Bank***. Due to the continued severe shortage of supplies in Gaza, WFP has further reduced rations to the minimum while **no food distributions took place in south/central Gaza in the first week of January**. **The total beneficiaries figure accounts for overlap between people receiving more than one type and duration of assistance. Monthly distribution figures are estimates and subject to change pending final beneficiary reconciliation.*
 - WFP distributed around **180,000 emergency ready-to-eat rations (RTE) and 248,000 25-kg wheat flour bags** reaching **1.25 million displaced people**. However, due to strained supplies and insecurity around crossings, the majority of families in southern and central Gaza only received one 25-kg wheat flour bag (barely covering needs for 10 days).
 - North Gaza bakeries remain closed. Gaza City has four operational bakeries, although they face severe fuel shortages, which limits their capacity. In Middle and South Gaza, all eight bakeries have shut down due to flour shortages and security incidents. WFP-supported bakeries in Gaza City produced over **1.3 million bread bundles**.
 - WFP provided **10.3 million hot meals to 290,411 people** across the Strip, through 69 kitchens. Supply shortages have forced partners to adjust meal content and **reduce portions by around 20 to 40 percent**, to stretch available resources.
 - A total of 8,120 pregnant and breastfeeding women and girls (PBW/G), along with 32,450 children under five (CU5)**, received 1.2 million lipid-based nutritional supplement (LNS) packs as complementary feeding assistance to meet their increased nutritional needs, mostly in Gaza City. With stocks at their lowest, there is an urgent need for a resupply of LNS in Gaza.
 - In the West Bank, 186,000 beneficiaries** redeemed USD 2.7 million through cash-based transfers. Additionally, 315 people, including displaced individuals, received multi-purpose cash assistance as physical cash. In parallel, 32,260 people received in-kind food distributions, totalling around 1,292 mt of food.

- Since the start of the crisis, WFP has delivered 11,750 WFP trucks with some 180,500 mt of food into Gaza.
- West Erez (Zikim)** is operational, delivering supplies to Gaza City.
- Karam Abu Salem/Kerem Shalom (KS)** is open, though operations are severely limited due to insecurity.
- Kissufim and Gate 96** are paused due to continued insecurity.

CLUSTERS AND COMMON SERVICES



Food Security Sector (FSS)

- In December, approximately 6,000 mt of flour has been distributed to some 1.2 million people – around 70 percent of needs (based on estimated population of 1.7 million people in the south and central Gaza).
- On 29 December, a joint mission with the Health Cluster delivered 50 WFP food parcels to health workers and patients in Indonesian Hospital in Jabalia, north Gaza, which has been cut off for over 80 days. Most of the recipients were people forced to flee from Kamal Adwan hospital, who had been relying on food stocks left behind from people who had evacuated and collecting wood and waste as cooking energy.
- The sector continues to advocate for entry of agricultural supplies – seed kits, organic fertilizers and nylon sheets for greenhouses - including through the private sector. Resuming agricultural activities, including small-scale home/community/school gardening, is key for diet diversity and reducing food gaps in Gaza.



Logistics Cluster

- Daily movements from West Erez entry point to partner warehouses in Gaza City continue, despite insecurity and delays in gaining access to the crossing which cause backlogs, and commodity losses due to looting.
- On 22 December, the Logistics Cluster facilitated a convoy of Non-Food Items along the Philadelphi corridor. Due to a security incident, only 26 percent of the items reached partners.
- Between 1 and 29 December, the Logistics Cluster facilitated ten direct convoys from Amman to West Erez with 119 trucks carrying 1,069 mt of health, food, WASH, protection, and shelter items on behalf of nine partners. This data excludes WFP's trucks.
- To date, the Logistics Cluster consolidated 27,332 m³ of humanitarian cargo at the common warehouse in Amman and received 57,038 m³ for common storage inside Gaza.



Emergency Telecommunications Cluster (ETC)

- Internet connectivity remains a primary communications challenge. Delays in approvals and denials for emergency telecommunication items continue to hinder the timely review and clearance of items for use in Gaza.



ACCOUNTABILITY TO AFFECTED POPULATIONS

- WFP's self-registration link** has facilitated over 1.8 million registrations for assistance since the start of the crisis, including over 29,000 during January 2025.



SUPPLY CHAIN



TOTAL AID DELIVERED TO THE GAZA STRIP IN DECEMBER

1,012 WFP TRUCKS | 14,000 mt
928 PARTNER TRUCKS | 16,554 pallets

EGYPT CORRIDOR	JORDAN CORRIDOR	ASHDOD CORRIDOR
269 WFP TRUCKS 3,612 mt 302 PARTNER TRUCKS 4,743 pallets Via Kerem Shalom and Gate 96	161 WFP TRUCKS 2,339 mt 399 PARTNER TRUCKS 7,256 pallets Via West Erez (Zikim) and Kerem Shalom	582 WFP TRUCKS 8,015 mt 228 PARTNER TRUCKS 4,555 pallets Via West Erez (Zikim) and Gate 96