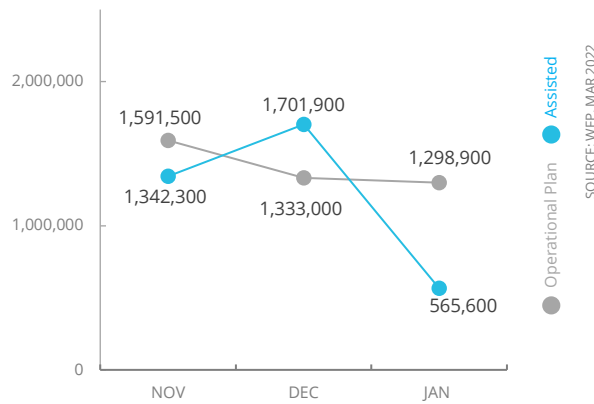


Democratic Republic of Congo

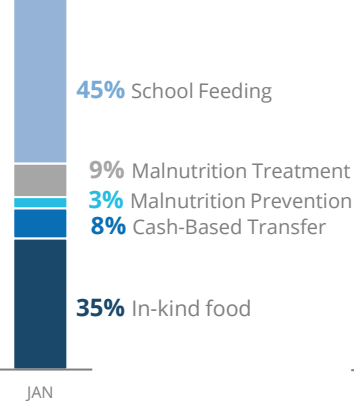
PEOPLE ASSISTED

DR Congo Country Strategic Plan

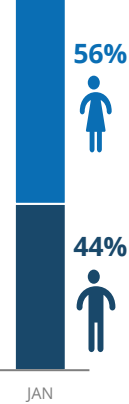


OPERATIONAL PROFILE

By Activity



By Sex



PEOPLE IN NEED

27 million people in need

8.8 million people targeted by humanitarian partners in 2022, including:

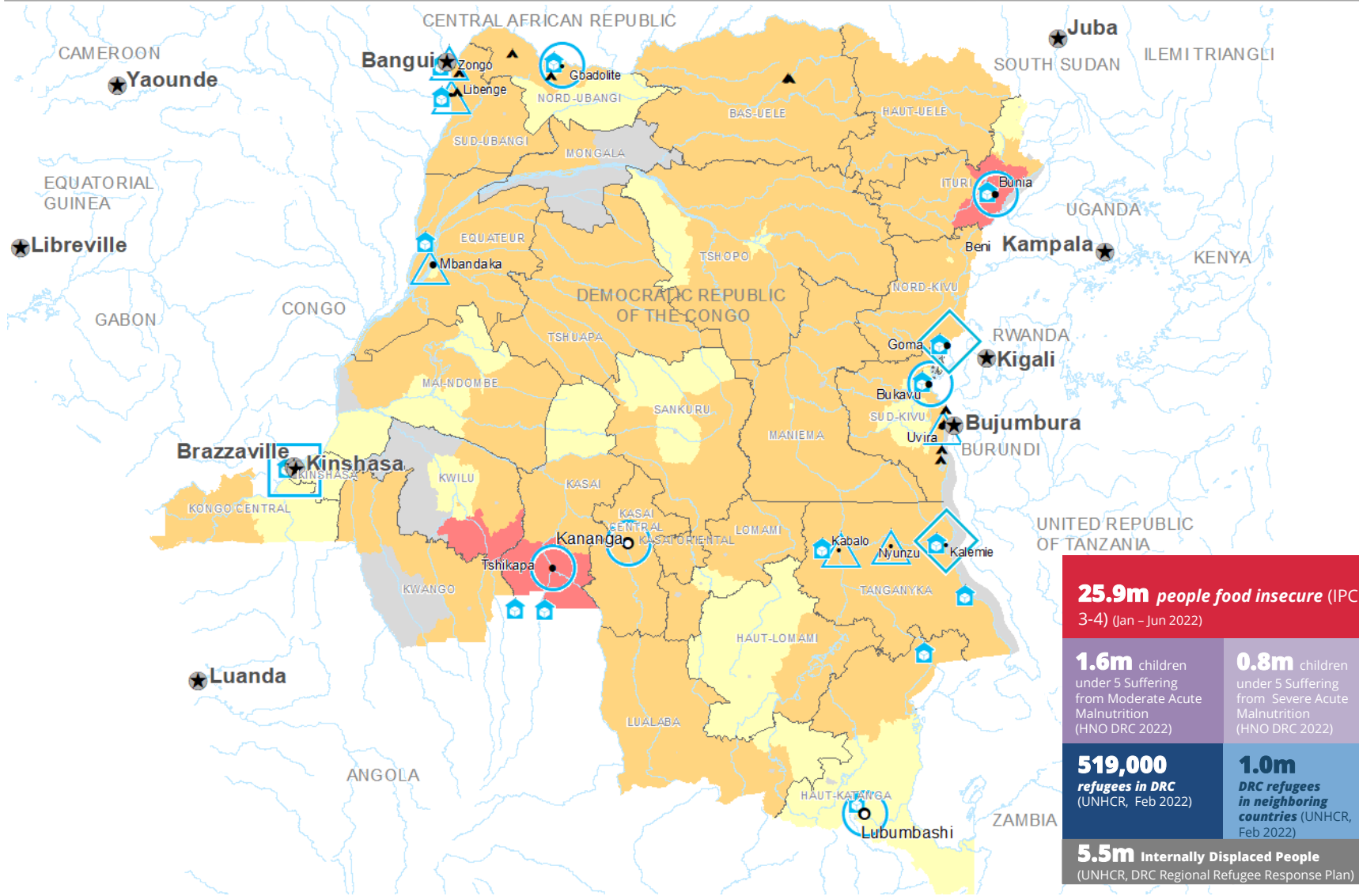
- 50,8% women
- 49,9% children
- 15% persons with disabilities

FUNDING

DR Congo Country Strategic Plan (CSP)
March – August 2022

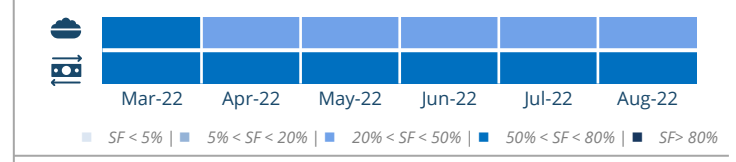
Net funding requirements
US\$136.3m

2022 LEVEL 3 RESPONSE
Requirements US\$645.4m



AVERAGE MONTHLY FUNDING REQUIREMENTS (US\$)

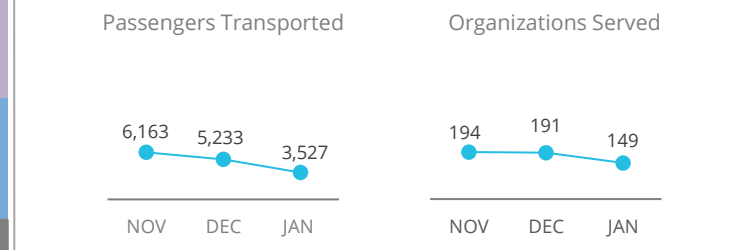
Food: 31.3m Cash: 20.3m



WFP-LED AND SUPPORTED CLUSTERS



UN HUMANITARIAN AIR SERVICES (UNHAS)



WFP EMERGENCY CLASSIFICATION: CORPORATE ATTENTION
SINCE 01 FEB 2022

SITUATION REPORT and COUNTRY BRIEF

Gender and Age Marker = 3

Integrated Phase Classification Projection January - June 2022

- No data
- Minimal (Phase1)
- Stressed (Phase2)
- Crisis (Phase3)
- Emergency (Phase 4)
- Famine (Phase5)

- Country Office
- Field Office
- Area Office
- Warehouse
- Refugee Camp
- National Capital
- Major Town
- Intermediate Town
- Small Town
- International Boundary
- Province Boundary
- River

Sources: WFP, UNGIWI, GAUL, GLCSC, OCHA, UNHCR, IPC. The designations employed and the presentation of material in the map(s) do not imply the expression of any opinion on the part of WFP concerning the legal or constitutional status of any country, territory, city or sea, or concerning the delimitation of its frontiers or boundaries. © World Food Programme 2022.