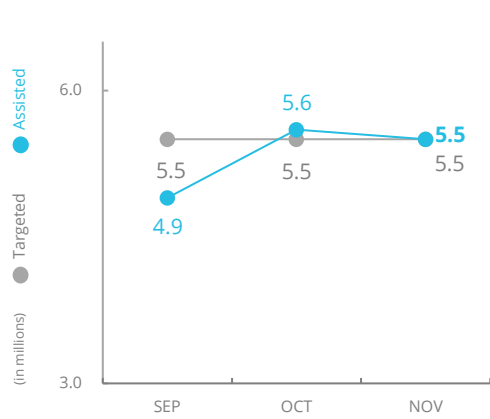
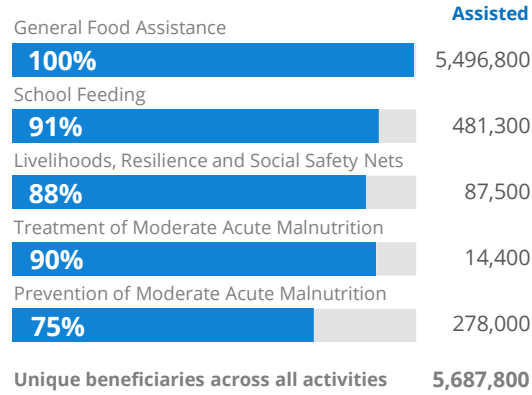


PEOPLE ASSISTED General Food Assistance

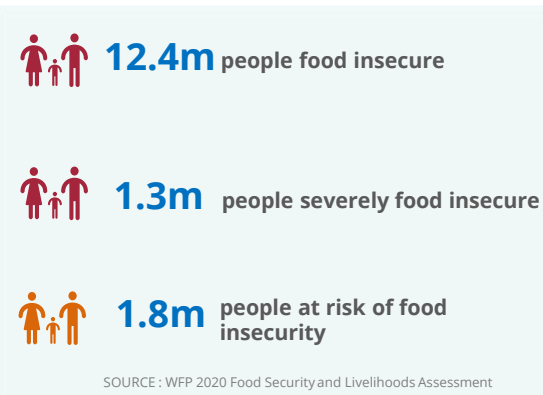


SOURCE: WFP, 13 JAN 2022

OPERATIONAL PROFILE By Activity (November)



PEOPLE FOOD INSECURE



FUNDING Syria Interim Country Strategic Plan (ICSP)

January - June 2022

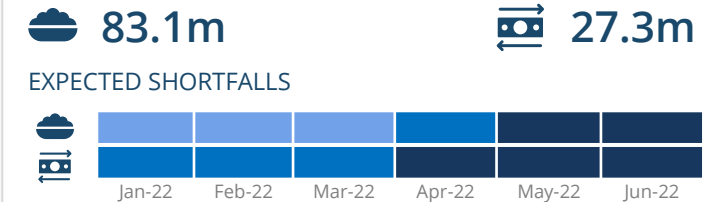
US\$365.8m

Net funding requirements

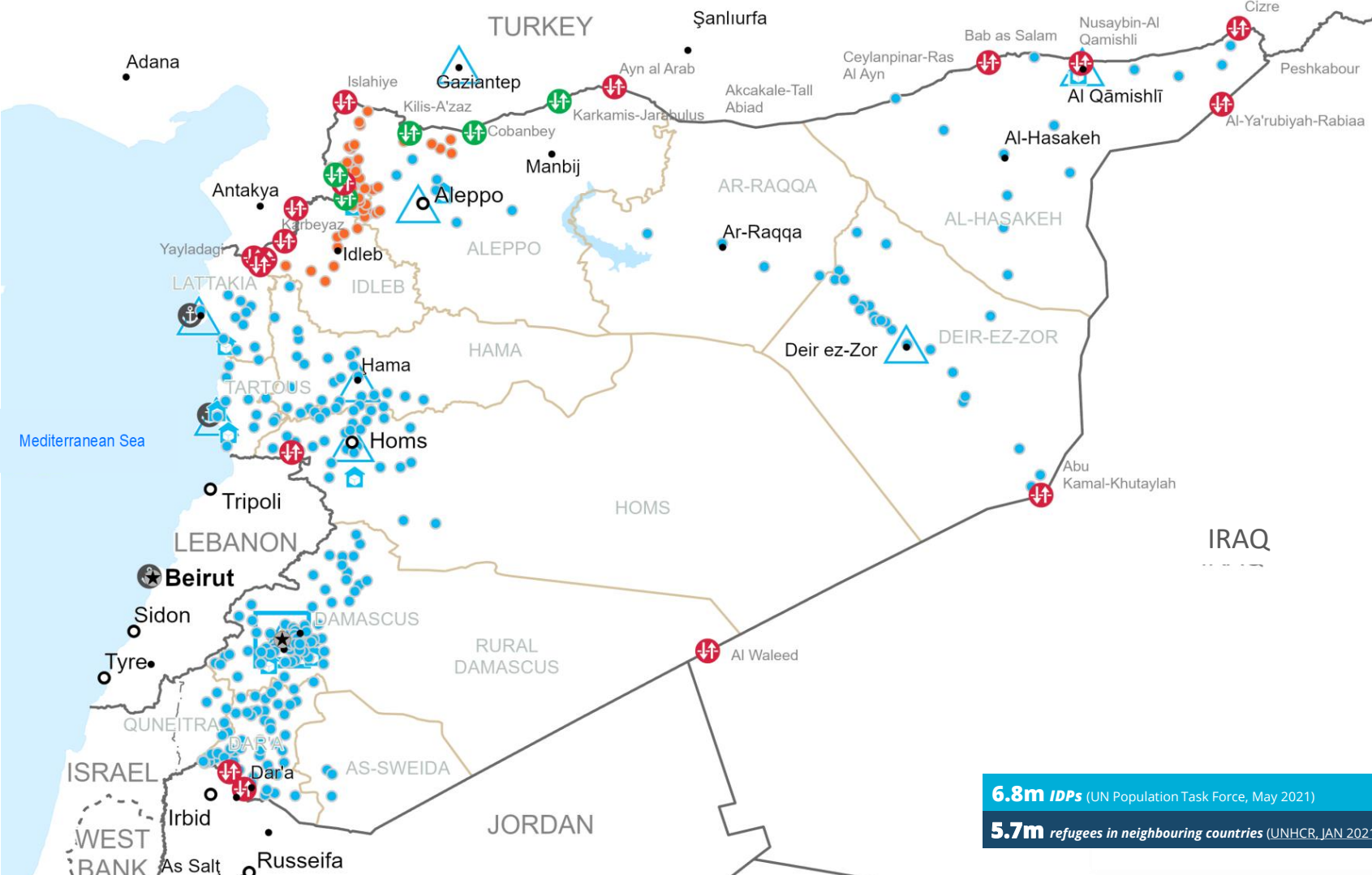
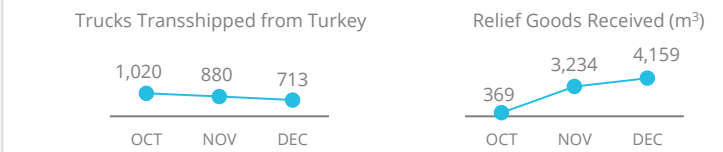
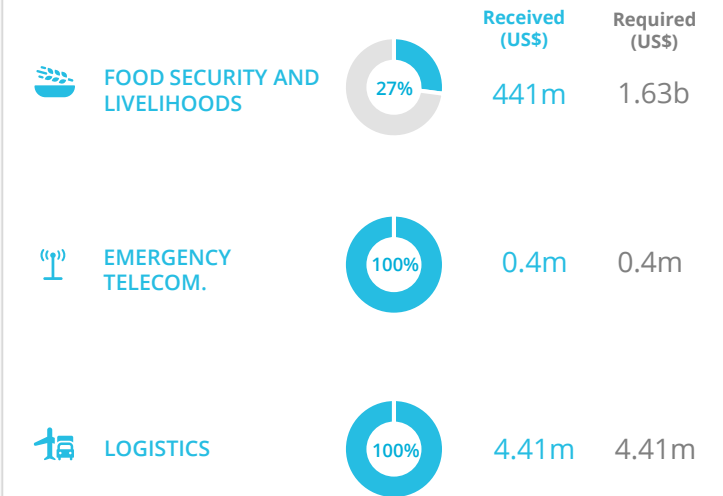
2021 LEVEL 3 RESPONSE
Requirements: US\$1269.9m
Funded: US\$566.1m



AVERAGE MONTHLY FUNDING REQUIREMENTS (6 Months - US\$)



WFP-LED AND SUPPORTED CLUSTERS



6.8m IDPs (UN Population Task Force, May 2021)
5.7m refugees in neighbouring countries (UNHCR, JAN 2021)

Sources: WFP, UNGIWG, GAUL, GLCSC, OCHA, UNHCR.

The designations employed and the presentation of material in the map(s) do not imply the expression of any opinion on the part of WFP concerning the legal or constitutional status of any country, territory, city or sea, or concerning the delimitation of its frontiers or boundaries. © World Food Programme 2022.

Approx. 50% of total FDP are displayed on this map.