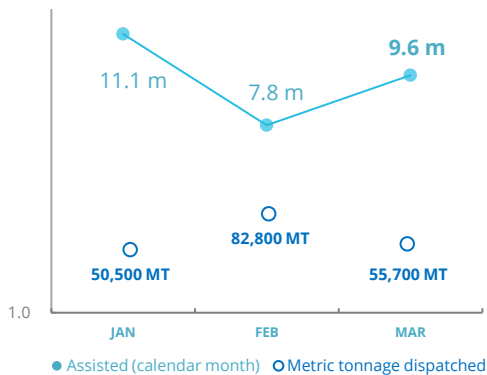


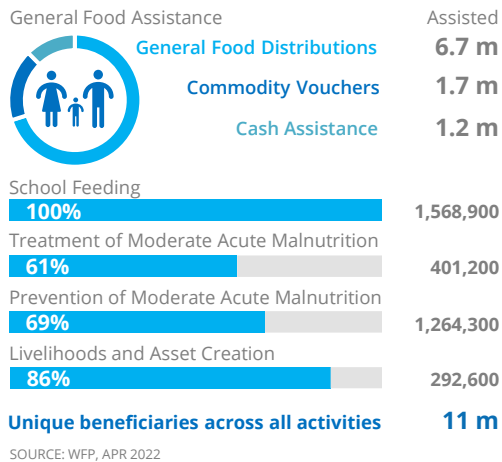
PEOPLE ASSISTED & MT DISPATCHED

General Food Assistance (GFA)



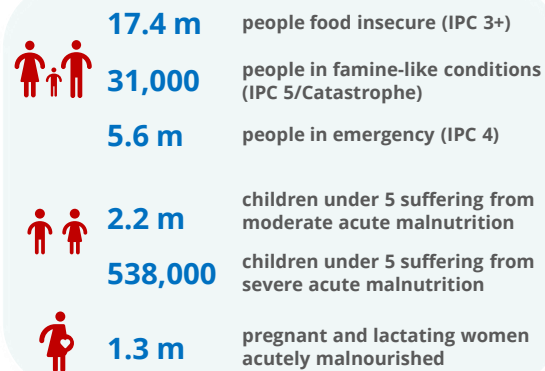
OPERATIONAL PROFILE

By Activity (March)



PEOPLE IN NEED

2022 IPC Analysis



FUNDING

Yemen Interim Country Strategic Plan (ICSP)

May - October 2022

US\$1.28 bn

Net funding requirements

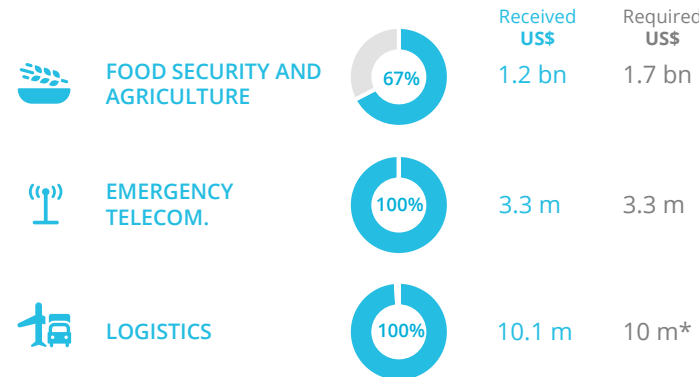
2022 RESPONSE
Requirements: US\$1.98 bn
Confirmed Contributions: US\$437.6 m

AVERAGE MONTHLY FUNDING REQUIREMENTS

(6 Months - US\$)

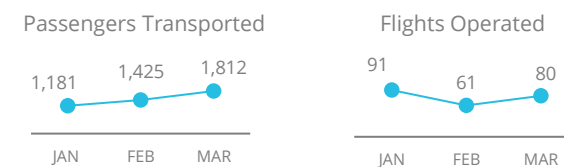


WFP-LED AND CO-LED CLUSTERS (2021)



*Based on updated implementation plan

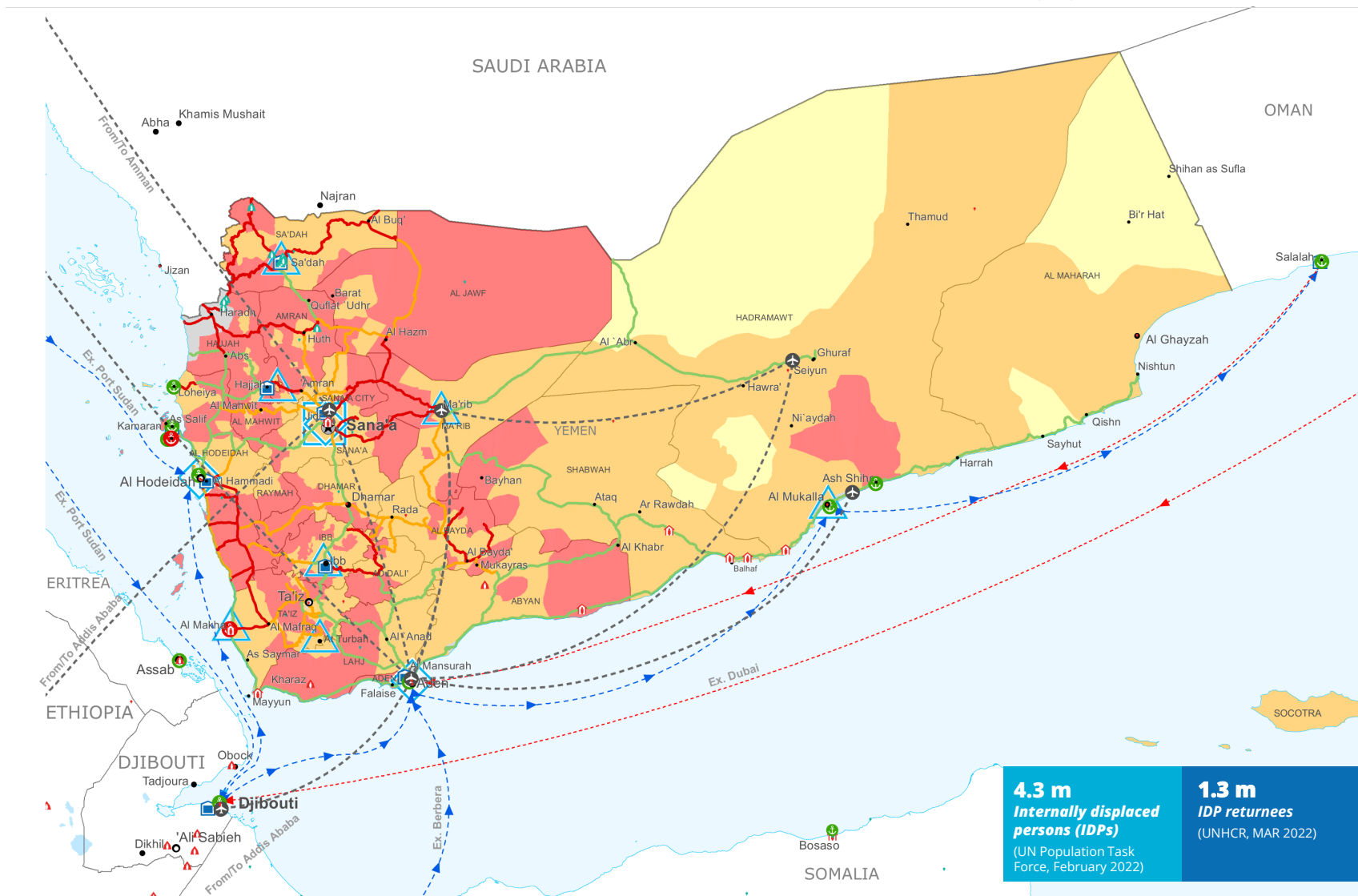
UN HUMANITARIAN AIR SERVICES (UNHAS)



WFP EMERGENCY CLASSIFICATION: Corporate Attention



For more information, see WFP Yemen page [here](#)



Integrated Food Security Phase Classification (IPC) analysis, January - May 2022



Sources: WFP, UNGIWG, GAUL, GLCSC, OCHA, UNHCR. The designations employed and the presentation of material in the map(s) do not imply the expression of any opinion on the part of WFP concerning the legal or constitutional status of any country, territory, city or sea, or concerning the delimitation of its frontiers or boundaries. © World Food Programme 2022.