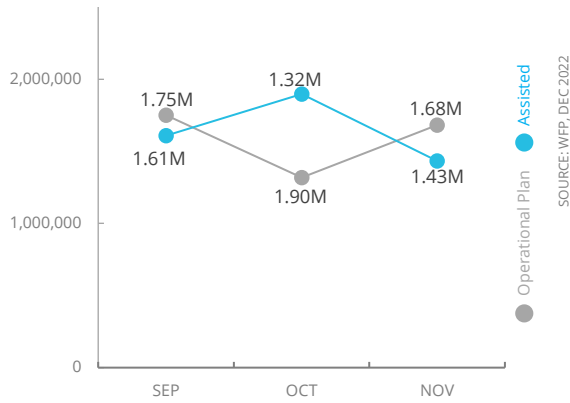


Democratic Republic of Congo

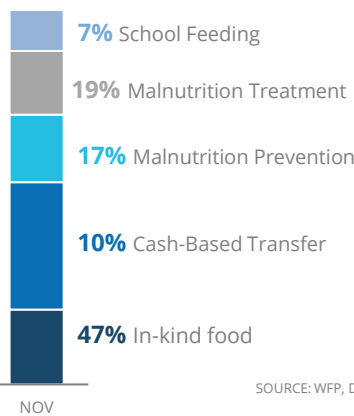
PEOPLE ASSISTED

DR Congo Country Strategic Plan (CSP)

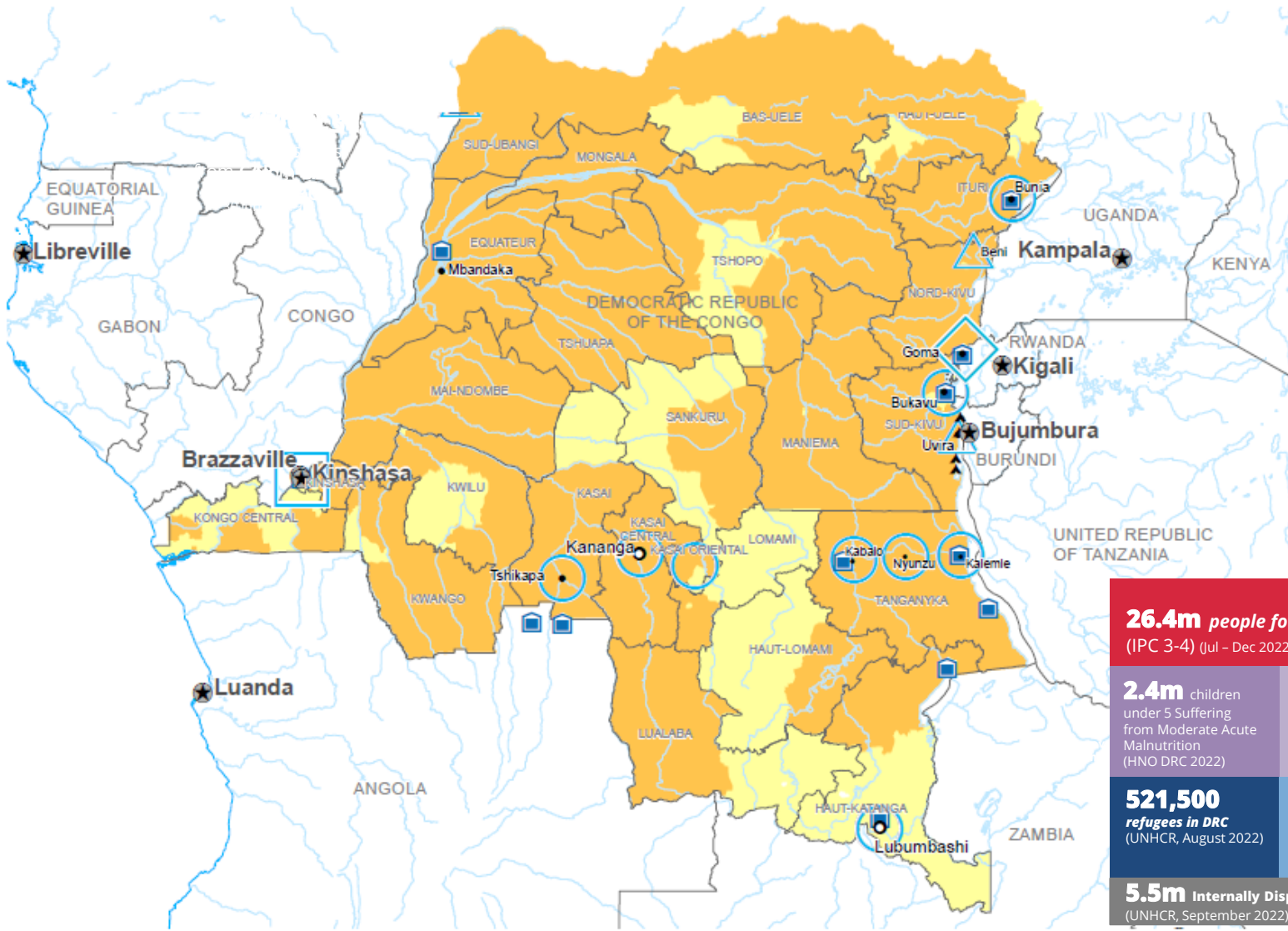
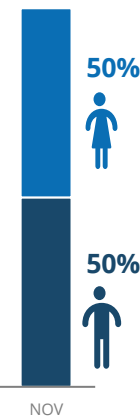


OPERATIONAL PROFILE

By Activity



By Sex



26.4m people food insecure (IPC 3-4) (Jul - Dec 2022)

2.4m children under 5 Suffering from Moderate Acute Malnutrition (HNO DRC 2022)

781,000 children under 5 Suffering from Severe Acute Malnutrition (HNO DRC 2022)

521,500 refugees in DRC (UNHCR, August 2022)

1.7m DRC refugees in neighboring countries (UNHCR, July 2022)

5.5m Internally Displaced People (UNHCR, September 2022)

Integrated Phase Classification Projection July - January 2022



Produced by the WFP Operations Centre (OPSCEN) jointly with Country Office and Regional Bureau for Southern Africa. This dashboard is based on best available information at the time of production. Future updates may vary as new information becomes available.

FUNDING

DR Congo Country Strategic Plan
January - June 2023

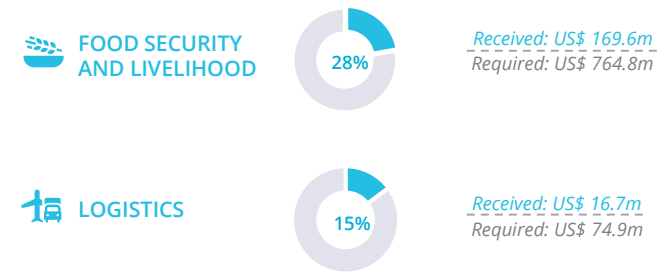
Net funding requirements
US\$156.4m

2022 Emergency Response Requirement **US\$625.3m**

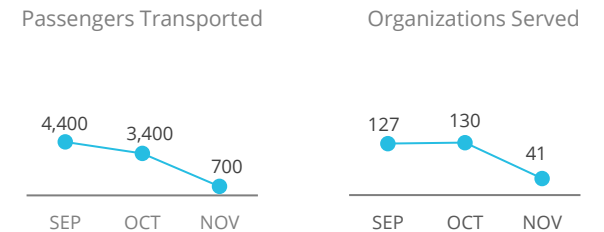
AVERAGE MONTHLY FUNDING REQUIREMENTS (US\$)

Food: 29m Cash: 15.6m

WFP-LED AND SUPPORTED CLUSTERS



UN HUMANITARIAN AIR SERVICES (UNHAS)



Sources: WFP, UNGIWI, GAUL, GLCSC, OCHA, UNHCR, IPC. The designations employed and the presentation of material in the map(s) do not imply the expression of any opinion on the part of WFP concerning the legal or constitutional status of any country, territory, city or sea, or concerning the delimitation of its frontiers or boundaries. © World Food Programme 2022.

WFP EMERGENCY CLASSIFICATION:
CORPORATE ATTENTION
SINCE 01 FEB 2022



SITUATION REPORT and COUNTRY BRIEF

