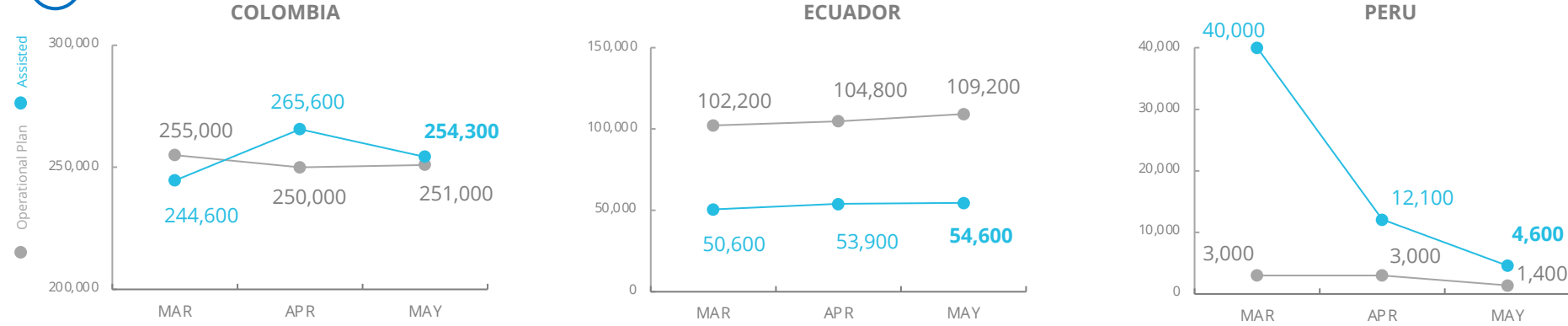


Sub-regional migrant crisis - Colombia, Ecuador, Peru

PEOPLE ASSISTED BY WFP



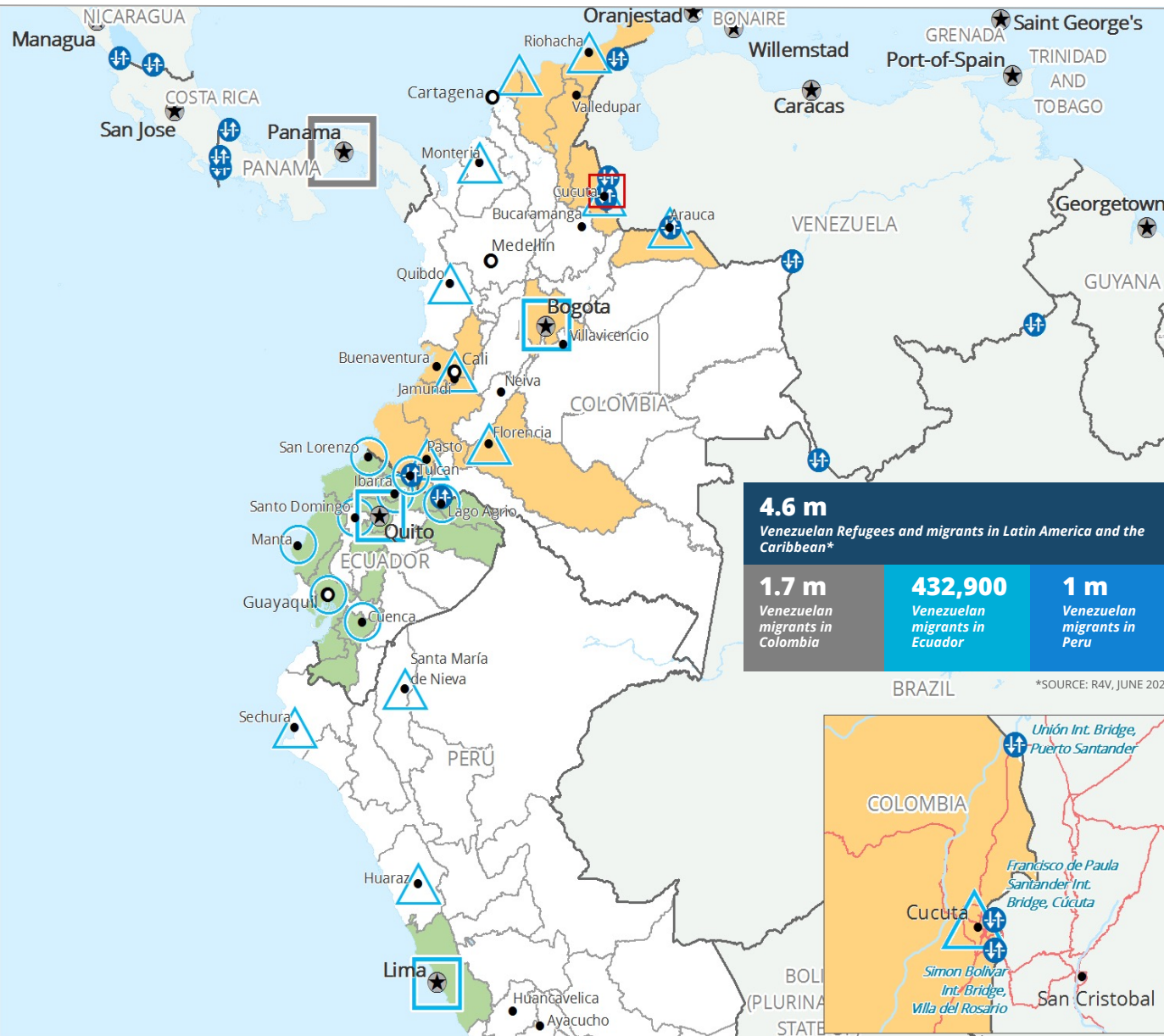
FUNDING

July 2021 - December 2021

Net Funding Requirements (US\$)

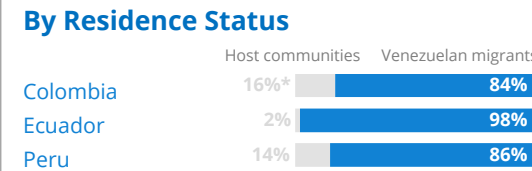
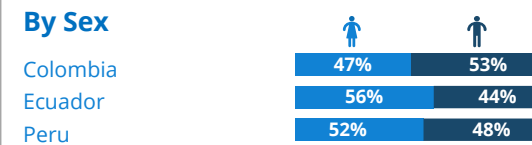
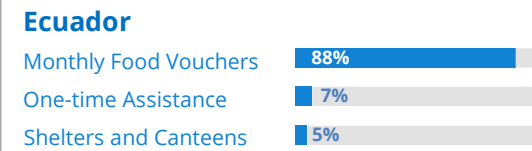
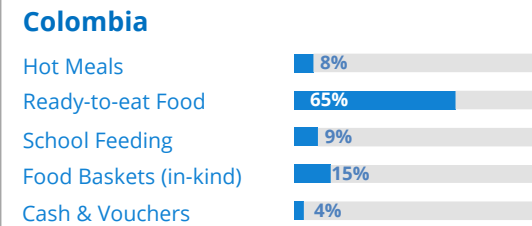
Colombia	79.9m
Ecuador	12.0m
Peru	26.3m
Total	118.2m

SOURCE: WFP, JUNE 2021



OPERATIONAL PROFILE

Percentage of People vs Modality



COVID-19 OPERATIONAL IMPACT

Status

Colombia

- ✓ School feeding: Adaptation to take-home rations; Significant scale-up of food baskets (in-kind); Expansion of Cash and Vouchers as a safer deliver modality.
- ✗ Hot meals: Most community kitchens are temporarily closed, smaller ones and those operating in shelters continue functioning.

Relief support to Venezuelan returnees through food kits; Emergency relief support in the Amazon region, including for indigenous populations; Expansion to urban areas, including cash assistance in Bogotá.

Ecuador

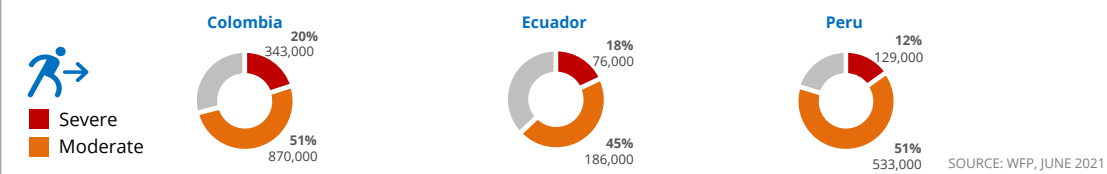
- ✓ Monthly Food Vouchers: Beneficiaries are still selected and assisted by phone. Strengthened assistance is given to the most vulnerable households with pregnant women and children. Due to the continuous COVID-19 restrictions, targeting new beneficiaries remains challenging.
- ! Shelters & Canteens: 26 out of 28 shelters and canteens assisted vulnerable population.

Peru

- ✓ Containment measures remain in place. Restriction levels vary per region, but does not have a significant impact on beneficiaries' capacity to redeem their cash assistance.

New: ✓ Ongoing: ✓ Partially Suspended: ! Suspended: ✗

Percentage of Migrants Severely and Moderately Food Insecure



 Regional Bureau
 National Capital
 + Border Crossing Point
 International boundaries
 Country Office
 Major Town
 WFP Operational Presence for L2 Response
 Department boundaries
 Sub Office
 Intermediate Town
 WFP Operational Presence related to the migrants crisis
 Field Office

WFP LEVEL 2 EMERGENCY SINCE 30 MARCH 2018. L2 EXTENDED UNTIL 10 DECEMBER 2021.

