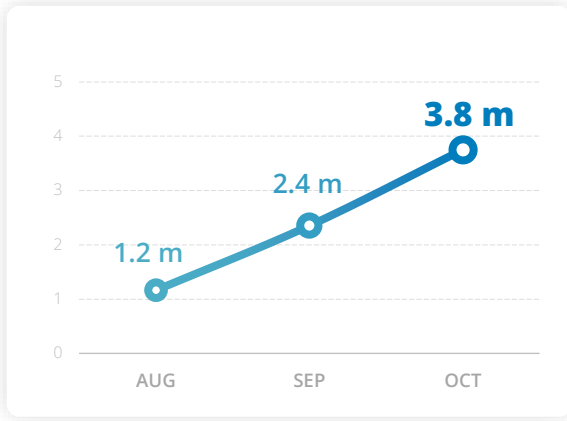


## PEOPLE ASSISTED

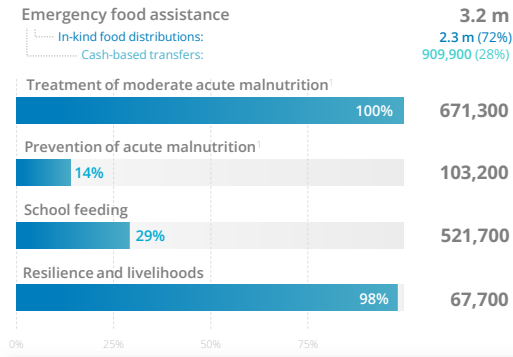
All activities



Estimated unique beneficiaries assisted across all WFP activities. Excludes overlap between activities.

## OPERATIONAL ACHIEVEMENTS

By activity



People assisted across all activities: **3.8 m**

Monthly assistance figures are estimates and subject to change upon final beneficiary reconciliation. Percentage indicate reach against monthly operational plan. <sup>1</sup>Nutrition figures are based on community dispatches.

Source: WFP Yemen, October 2024

## TOP DONORS

By confirmed contributions (2024)

- United States of America
- European Commission
- Kingdom of Saudi Arabia
- United Kingdom
- Germany

## FUNDING

Yemen interim country strategic plan (2023 - 2025) [MORE DETAILS](#)

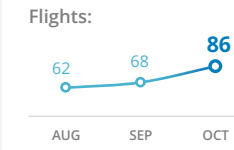
6-MONTH NET FUNDING REQUIREMENT:

# US\$ 608 m

November 2024 → April 2025

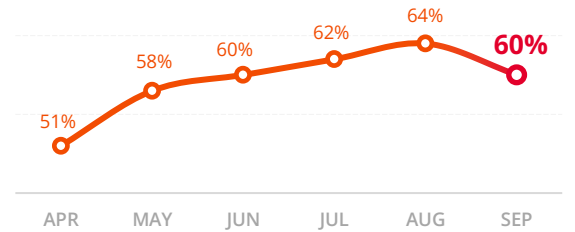
## UNHAS

United Nations Humanitarian Air Service



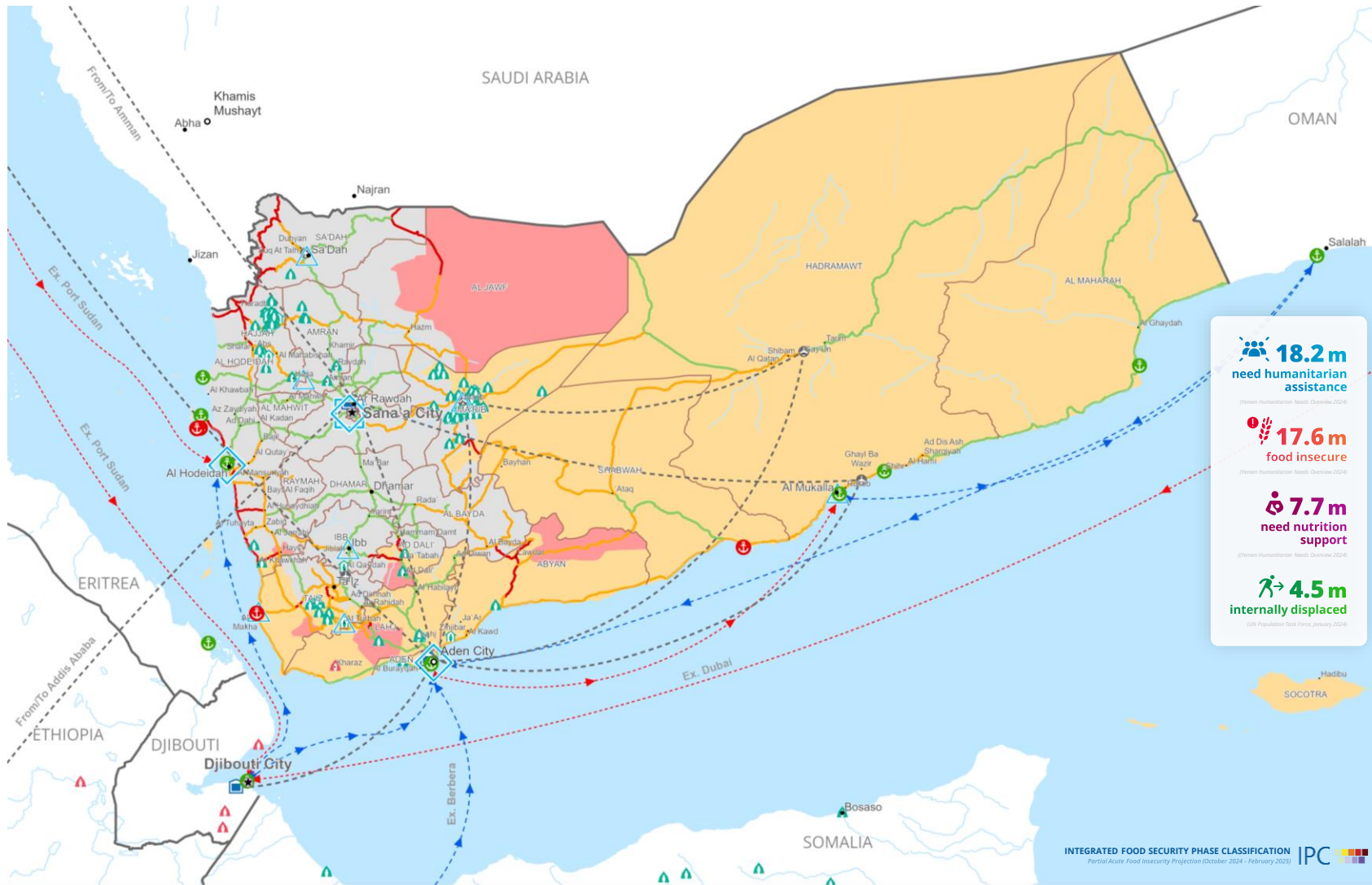
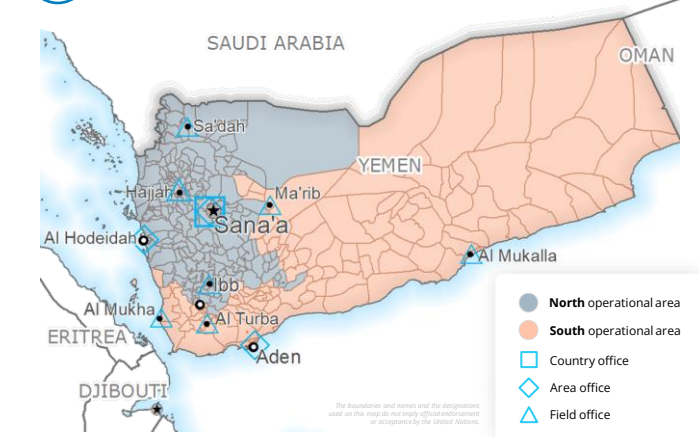
## FOOD INSECURITY

Inadequate food consumption (FCS) [MORE DETAILS](#)



## OPERATIONAL PRESENCE

WFP Yemen



**18.2 m** need humanitarian assistance  
(Yemen Humanitarian Needs Overview 2024)

**17.6 m** food insecure  
(Yemen Humanitarian Needs Overview 2024)

**7.7 m** need nutrition support  
(Yemen Humanitarian Needs Overview 2024)

**4.5 m** internally displaced  
(UN Population Task Force, January 2024)

No data	Crisis (Phase 3)	Country Office	Field Office	Port Closed	UNHAS Connection	Road Open	IDP Camp	Refugee Camp	National Capital	International Boundary
Minimal (Phase 2)	Emergency (Phase 4)	Area Office	Warehouse	Port Operational	UNHAS Route	Road with Restricted Access	IDP Center	Refugee Center	Intermediate Town	Governorate Boundary
Stressed (Phase 2)	Catastrophe (Phase 5)			Port with Restricted Access	Supply Route Open	Road Closed	IDP Location	Refugee Location	Small Town	River

Produced by the WFP Yemen country office in coordination with the WFP Operations Centre (OPSCEN) and the WFP Regional Bureau for the Middle East, Northern Africa, and Eastern Europe. The dashboard is based on best available information at the time of production, and information on future dashboards may vary as new information becomes available.

The boundaries and names and the designations used on this map do not imply official endorsement or acceptance by the United Nations.

WFP emergency response phase: **CORPORATE ATTENTION**

For more information: **SITUATION REPORT #10, 14 NOVEMBER 2024**