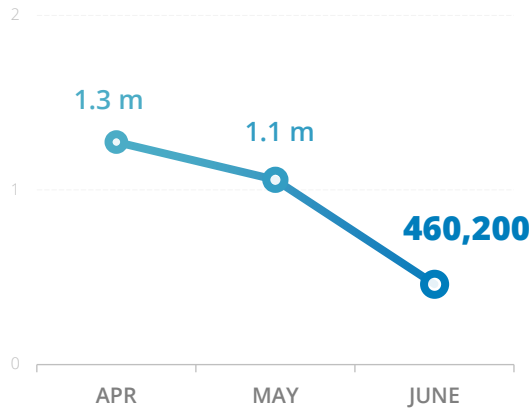


## PEOPLE ASSISTED

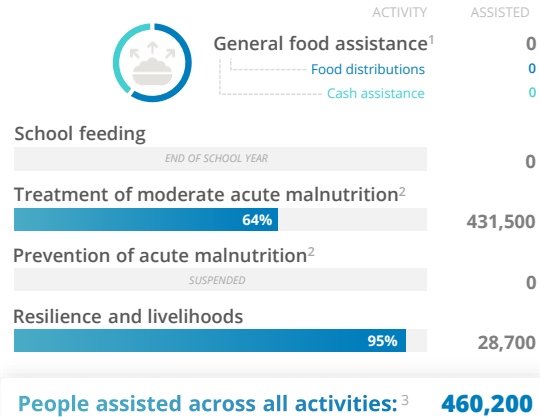
All activities



SOURCE: WFP YEMEN, JUNE 2024

## OPERATIONAL PROFILE

By activity (percent reached of operational plan)



<sup>1</sup> No food distributions took place in June. <sup>2</sup> Based on dispatches. <sup>3</sup> Estimated unique beneficiaries assisted. Excludes overlap between activities.

## 2024 TOP DONORS

By confirmed contributions

- United States of America
- United Kingdom
- Republic of Korea
- Germany
- United Nations Central Emergency Response Fund

SOURCE: WFP, AS OF 30 JUNE 2024

## FUNDING

Yemen interim country strategic plan (2023 - 2025)

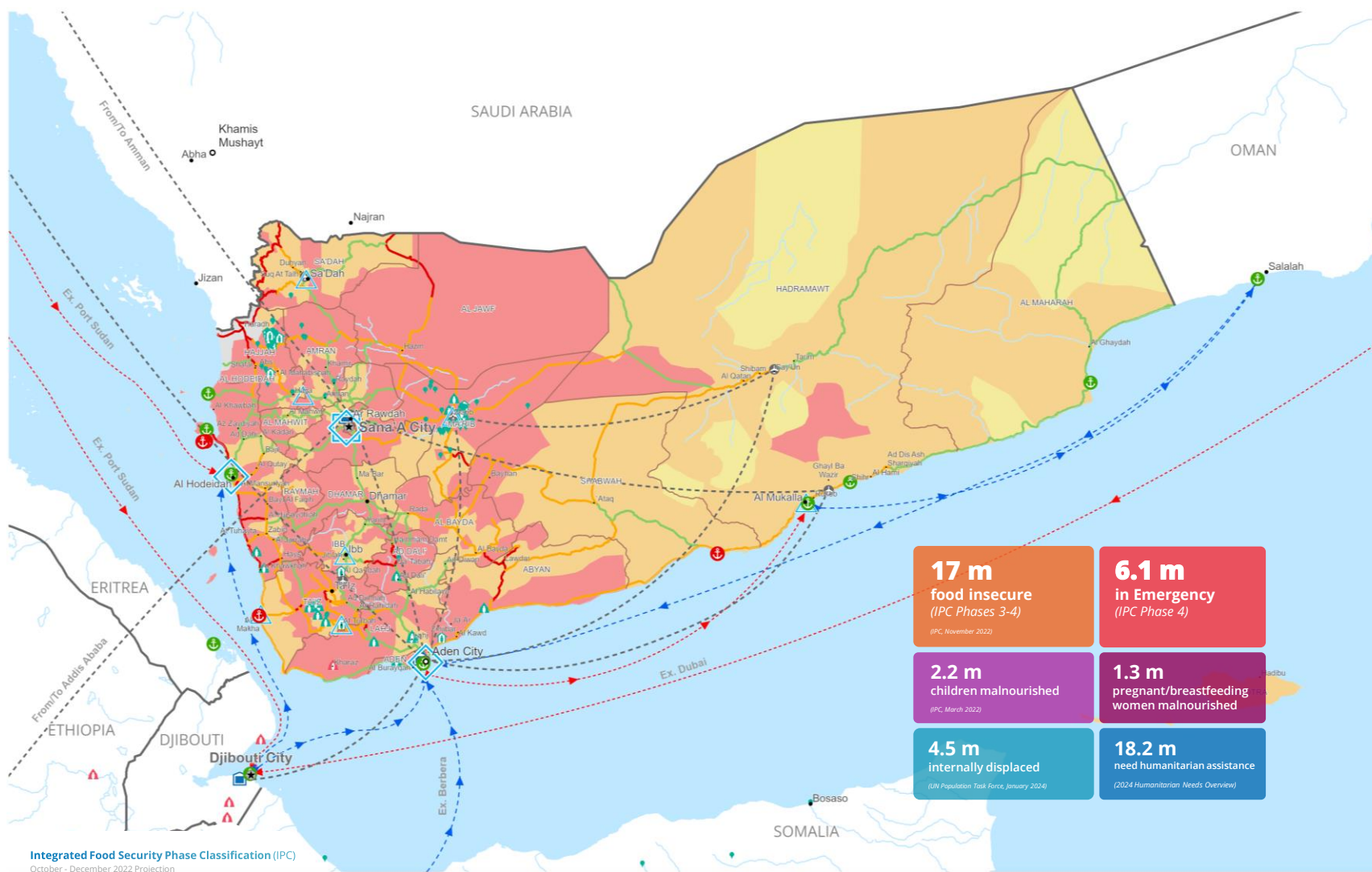
6-MONTH NET FUNDING REQUIREMENT:

# US\$ 1.25 bn

July - December 2024



SOURCE: WFP, JUNE 2024

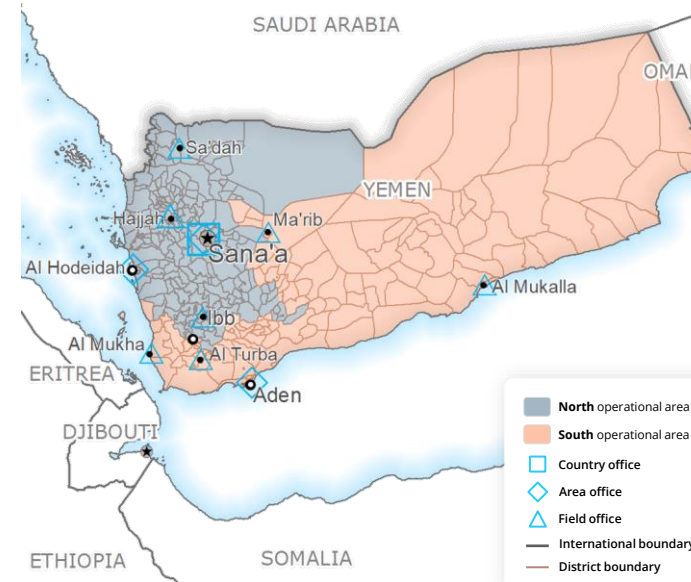


- 17 m** food insecure (IPC Phases 3-4) (IPC, November 2022)
- 6.1 m** in Emergency (IPC Phase 4)
- 2.2 m** children malnourished (IPC, March 2022)
- 1.3 m** pregnant/breastfeeding women malnourished
- 4.5 m** internally displaced (UN Population Task Force, January 2024)
- 18.2 m** need humanitarian assistance (2024 Humanitarian Needs Overview)

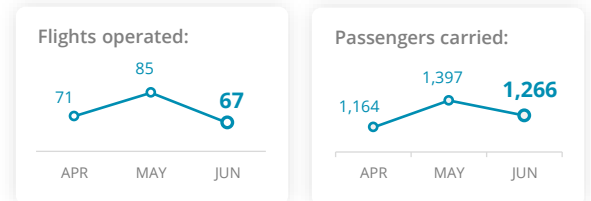
Integrated Food Security Phase Classification (IPC)  
October - December 2022 Projection

<ul style="list-style-type: none"> <li>No data</li> <li>Minimal (Phase 2)</li> <li>Stressed (Phase 2)</li> <li>Crisis (Phase 3)</li> <li>Emergency (Phase 4)</li> <li>Famine (Phase 5)</li> </ul>	<ul style="list-style-type: none"> <li>Country Office</li> <li>Area Office</li> <li>Field Office</li> <li>Warehouse</li> </ul>	<ul style="list-style-type: none"> <li>Port Closed</li> <li>Port Operational</li> <li>Port with Restricted Access</li> <li>UNHAS Connection</li> <li>UNHAS Route</li> <li>Supply Route Open</li> <li>Supply Route Closed</li> </ul>	<ul style="list-style-type: none"> <li>Road Open</li> <li>Road with Restricted Access</li> <li>Road Closed</li> <li>IDP Camp</li> <li>IDP Center</li> <li>IDP Location</li> <li>Refugee Camp</li> <li>Refugee Center</li> <li>Refugee Location</li> <li>National Capital</li> <li>Major Town</li> <li>Intermediate Town</li> <li>Small Town</li> </ul>	<ul style="list-style-type: none"> <li>International Boundary</li> <li>Governorate Boundary</li> <li>River</li> </ul>
---	--	---	--	---

## WFP YEMEN OPERATIONAL PRESENCE



## UN HUMANITARIAN AIR SERVICE (UNHAS)



SOURCE: UNHAS YEMEN, JUNE 2024

WFP EMERGENCY CLASSIFICATION:

### CORPORATE ATTENTION

For more information, see the WFP Yemen Situation Report #6, June 2024. See also the Yemen Emergency page on WFP.org.

