

WFP PALESTINE EMERGENCY RESPONSE

External Situation Report 87

Reporting Period:
1-14 April 2026

HIGHLIGHTS

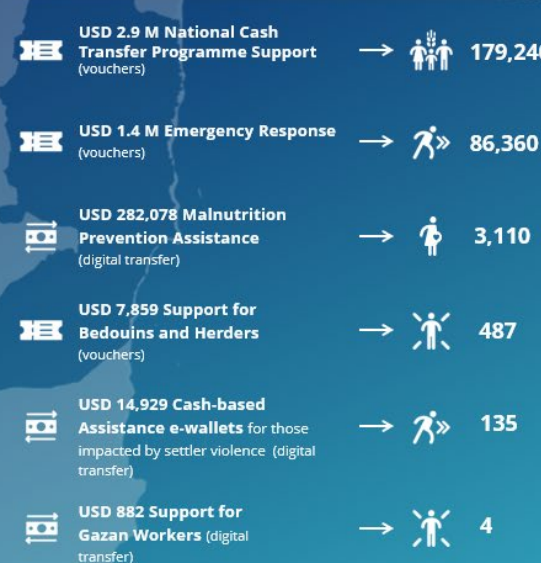
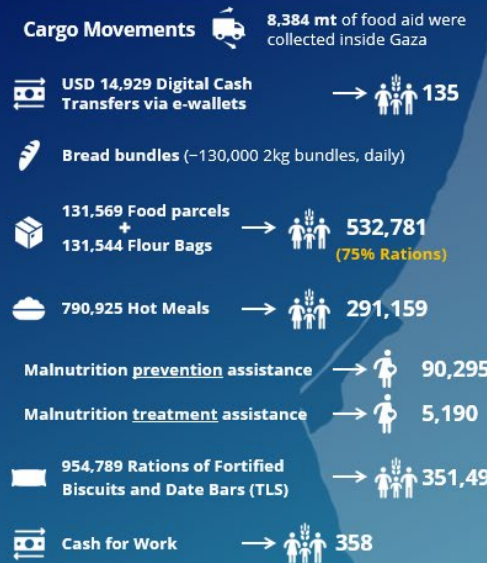
- With key crossings temporarily closed after the recent Middle East escalation, food availability in Gaza has declined. The reopening of Zikim crossing, with an Israeli-imposed limit of 100 trucks per day, enabled a modest increase in cargo volumes entering northern Gaza. However, overall inflows remain insufficient to offset reduced food availability.
- Prices have surged - the highest in the region - with wheat flour prices doubling in recent weeks. Coupled with unemployment remaining at 80 percent, these increases have significantly worsened affordability, particularly for fresh food such as vegetables and animal proteins, through March. Poorer dietary diversity has contributed to high levels of malnutrition among pregnant and breastfeeding women, with over 40,000 new admissions recorded between October and March, surpassing IPC annual projections. While admissions began to decrease in March, levels remain elevated.
- WFP is advancing early recovery activities while sustaining large-scale humanitarian assistance in Gaza. In April, WFP is supporting nearly 650,000 people with digital cash transfers, while also helping revive businesses and jobs through bakery support, retailer grants, and Cash-for-Work programmes.
- Humanitarian needs are increasing in the West Bank due to settler violence, military operations, and movement restrictions. In April, WFP aims to assist 448,000 people, scaling up assistance by nearly 100,000 beneficiaries, primarily through cash and voucher assistance.

APRIL IN NUMBERS Reporting period 1-14 April 2026

PALESTINE **923,433 beneficiaries**
(2 million planned)

Gaza **650,035** (1.6 million planned)

West Bank **273,398** (447,800 planned)



WFP Contributions: USD 94 M Jan - Dec 2026



Largest Donors



WFP Total Needs for 2026: USD 1.3 B

WFP Six-months Net Funding Requirements: USD 271 M April - Sep 2026

Figures are subject to change pending final partner reporting for the month. Total beneficiary numbers account for overlap among individuals receiving multiple types of assistance.

SITUATION UPDATE

- **Regional tensions persist**, with a fragile ceasefire environment and heightened risks around the Strait of Hormuz continuing to disrupt global trade. Fuel and food prices remain elevated, and supply chains continue to face pressure.
- **In Gaza, access remains constrained, though conditions have slightly improved.** The Karam Abu Salem/Kerem Shalom (KS) crossing remains operational, and the Zikim crossing reopened on 12-13 April. This marks the first time since late February that more than one crossing has been in use.
- **In the West Bank, the situation remains tense.** Movement restrictions, intermittent insecurity, and access constraints continue to affect humanitarian operations. Nearly 400 settler-related incidents were reported over a 40-day period, contributing to rising protection risks. The threat

of missile strikes and falling debris during the regional conflict posed additional security risks.

- **Several elements of the peace process remain unresolved**, with continued delays and lack of agreement on key issues.

PROGRAMME UPDATE

General Food Assistance in Gaza

- As of mid-April, WFP reached **532,781 people through 44 active distribution sites**. Rations increased from 50 to **75 percent of the full entitlement**. Each household now receives two food parcels, one bag of wheat flour, and 2.5 kg of fortified biscuits.
- WFP supports **26 bakeries** producing an average of **130,000 bread bundles daily** (2 kg each). Most bread is subsidized through contracted retailers (80%), while a smaller share (20%) is distributed for free through community kitchens.

- A shortage of wheat flour continues to constrain operations, leading WFP to prioritize available wheat supplies for bakery production over general food distributions. The fuel-only bakery model remains on hold due to lack of commercial wheat flour.
- **Thirty-five WFP-supported community kitchens** remain operational, producing around **350,000 meals daily**. **Free bread continues to be distributed across 412 shelters**. Output is expected to decrease to 250,000 daily meals per day from 15 April, in line with a shift towards cash-based assistance.



Nutrition Assistance in Gaza

- WFP partners continue to provide **malnutrition prevention assistance** across 226 sites, reaching 90,295 pregnant and breastfeeding women and girls (PBWG) and children under five. **Treatment services** remain active across **93 sites, reaching 5,190 PBWG** during the same period.
- In collaboration with UNICEF and the Education Cluster, **WFP provided 954,789 fortified snacks to 351,496 children** across 307 temporary learning spaces.
- **Cash for prevention (C4P) activities are expanding**. In April, WFP will target 18,300 children under five and PBWs, up from 12,000 in March. Social and Behavior Change Communication (SBCC) sessions continue.



Digital Payments in Gaza

- During the reporting period, WFP provided **digital cash assistance through e-wallets to 135 people** (27 households). By the end of April, **WFP plans to reach 650,000 people** (130,000 households). Of these, 62,000 are fixed households that receive regular monthly transfers. The remaining households receive one-off support on a rotational basis.
- **WFP trained 40 partner staff in Gaza City**, in coordination with financial service providers (PalPay and JawwalPay). The training focused on supporting community members to open e-wallets and use digital services.
- **Under cash for work (CfW) activities**, 358 participants were engaged in sewing and carpentry work.



West Bank Operations

- **WFP continues to implement emergency and regular assistance programmes** in the West Bank to support vulnerable populations affected by ongoing socioeconomic shocks and displacement.
- So far in April, assistance was provided to **273,398 people** through a combination of food vouchers, in-kind food and cash-based transfers, targeting food-insecure households, displaced families, and vulnerable herder communities.



SUPPLY CHAIN

- **All corridors are operational**, including Ashdod, Egypt, Israel, Jordan, and the West Bank. **Offloading rates** remain high at **92 percent**.
- **The Ashdod scanner has been out of service** since 17 March. This has reduced throughput, with 260 trucks offloaded between 1-14 April compared to 442 during the same period in March.
- **On 12 April, Israeli authorities approved the use of the Zikim crossing for aid entry into Gaza** in addition to KS

crossing.

- **Security incidents increased** during the reporting period. Military activity intensified near the “yellow line” and along Salah ad-Din Road.
- **Humanitarian access remains constrained and restrictions are disrupting operations**. WFP staff and contractors in Gaza have been denied permission to enter coordinated areas, limiting staff availability for cargo collection and other missions. Access to the crossing platforms is limited to low levels of international staff, reducing oversight of commodity conditions and handling.
- Fuel stocks inside Gaza remain adequate in the short-term, dependent on the continued arrival of sufficient fuel trucks. However, shortages of lubricants, engine oil, batteries, tires and other spare parts for vehicles and machinery are now critical to ensure the continuity of humanitarian logistics operations.

CLUSTERS AND COMMON SERVICES



Food Security Sector (FSS)

- As of 9 April, 23 partners prepared and delivered nearly **1.3 million meals** daily through 129 kitchens (including WFP-supported kitchens).
- Partners will distribute around **900 veterinary kits** to address rodent and parasite infestations. The intervention aims to reduce parasite loads in animals and the surrounding environment and lower risks to human health, especially given limited access to pesticides.
- **Restoring local food production requires full access to agricultural inputs**, which must enter at scale through both commercial and humanitarian channels.



Logistics Cluster (LC)

- **Zikim is expected to operate three times per week** for cargo from Jordan and Ashdod.
- Over the reporting period, **two back-to-back (B2B)* convoys** entered from Jordan via King Hussein Bridge, carrying 67 trucks of shelter and WASH items. **B2B requires cross-loading cargo between Jordanian, Israeli, and Palestinian trucks before entering Gaza, making delivery slower and more complex.*
- A total of 310 trucks from Ashdod, 200 from Egypt (out of 251), and 49 from the West Bank were offloaded at Kerem Shalom.
- **Two new warehouses became operational in Gaza**. Total storage capacity now stands at 15,570 m² across the Strip.
- Between 1 and 10 April, **2,033 pallets** were received for storage on behalf of **six LC partners**. Nearly 2,000 pallets were collected from KS, mainly shelter items.
- The Cluster continued **physical counts at KS platform** to support partners. Access to the platform remains limited to international staff.



Emergency Telecommunications Cluster (ETC)

- **The ETC advanced operations by standardizing communication systems**, including reprogramming WFP Very High Frequency (VHF) radios in line with UN standards, strengthening connectivity through the ETC-Palestinian Non-Governmental Organization (PNGO) Humanitarian Hub Connectivity Portal, and expanding access to information services with the rollout of Radio Insan (First Response Radio) across coordination platforms.