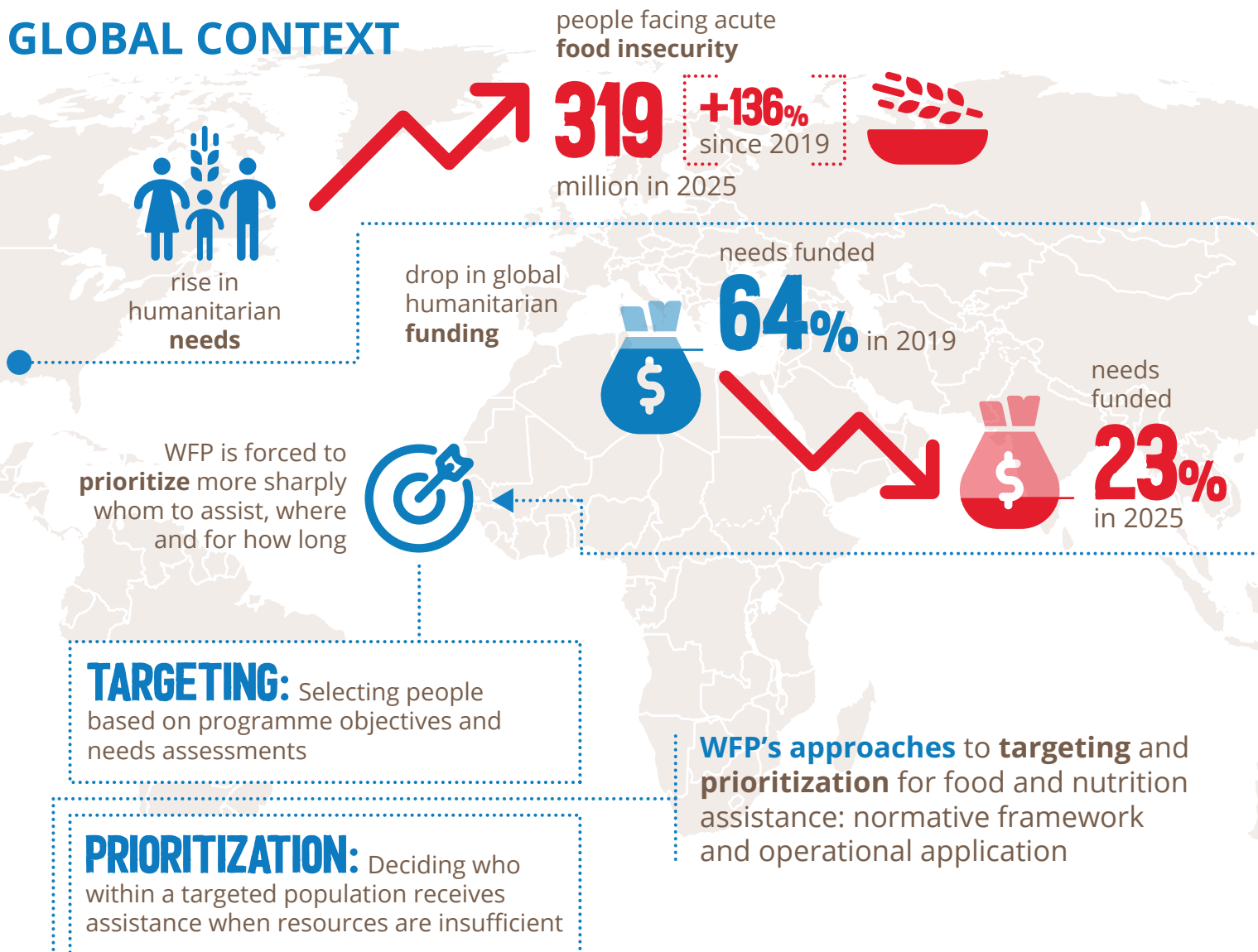


GLOBAL CONTEXT



EVALUATION KEY INSIGHTS

WFP'S NORMATIVE FRAMEWORK AND SUPPORT STRUCTURES



WFP's normative framework is largely fit for purpose, but fragmented and with some gaps



Global and regional support was key to improving country office practice but is now at risk due to workforce reductions

APPROPRIATENESS, AGILITY AND TRANSPARENCY



Approaches used are context-appropriate, but rationale is rarely documented and there is limited evidence on costs of each approach. Limited agility to adapt targeting and prioritization approaches to changing circumstances

COOPERATION AND PARTNERSHIPS



Internal cross-functional engagement and collaboration with external partners have improved, but deeper engagement is needed. Use of national registries remains limited

EFFECTIVENESS



Limited data on inclusion and exclusion errors hinders WFP's ability to assess targeting effectiveness



Overall, targeting approaches allow WFP to identify the most vulnerable people



Ration cuts led to assistance being too thinly spread, reducing its effectiveness. Limited programme integration due to different programmes' objectives and targeting logics

DISCONNECT BETWEEN STANDARDS AND PRACTICE



Uneven partners' capacities, insufficient communication and inconsistent beneficiary verification and deduplication processes create operational and reputational risks



Limited transparency with affected communities weakened trust and social cohesion

WFP'S STRATEGIC DIRECTION AND PRINCIPLES



Sharper prioritization creates ethical dilemmas over who to assist, where and for how long



Vulnerability-based targeting improves fairness but raises costs. Country offices seek clearer corporate guidance on how to navigate these trade-offs



Strategic Plan 2026-2029 shifts toward higher quality assistance and greater integration of emergency and resilience support

RECOMMENDATIONS

- 1 Support country offices by providing a clearer articulation of WFP's strategic focus and positioning to strengthen their targeting and prioritization rationales
- 2 Uphold targeting and prioritization standards by making guidance and tools more accessible, enforcing compliance with minimum standards, and safeguarding capacity
- 3 Support country offices in adopting more transparent, agile and cost-effective targeting and prioritization approaches
- 4 Strengthen the interoperability of WFP's own data systems and common data systems or data sharing with other humanitarian agencies for targeting and prioritization

KNOW MORE

Brief

Summary Report

Full Report