

# WFP Philippines

## Typhoon Odette - Situation Report #13

25 February 2022



A new satellite dish (VSAT) was provided to support DICT operations in Maasin City in Southern Leyte on 22 February. © WFP/ETC/John Lobaton

## In Numbers

**11 million** people affected<sup>1</sup>

**2.4 million** people in need of humanitarian assistance<sup>2</sup>

**380,000** people targeted by WFP with food and cash assistance<sup>3</sup>

<sup>1</sup> [DSWD DROMIC Report #90 on Typhoon Odette – 21 February 2022](#)

<sup>2</sup> [Humanitarian Needs and Priorities Plan \(Revised\)](#)

<sup>3</sup> [WFP Updated Typhoon Odette Response Plan](#)

## Highlights

- **WFP has reached more than 48,000 people in Siargao and Dinagat Islands.** Food distribution is ongoing to reach a target of 115,000 people in the two areas.
- **WFP is developing cash distribution plans** for assistance in Southern Leyte and on the islands of Siargao, Dinagat, and Bohol. The validation of beneficiary data and lists takes place through SCOPE, WFP's beneficiary management platform.
- **WFP is launching a value voucher programme** in Surigao City and Surigao del Norte. In preparation, WFP has completed market and retailer assessments, and this will soon be followed by assistance.

## Overview

On 16 and 17 December, Typhoon<sup>1</sup> Odette (international name 'Rai') made landfall nine times across seven provinces. It affected 11 of the 17 regions in the Philippines. Prior to landfall, WFP's partnership with the Department of Information and Communications Technology ensured that two Mobile Operations Vehicles for Emergencies (MOVE) sets\* were prepositioned to support areas where connectivity had been severed. A day after landfall, WFP trucks were en route to deliver family food packs and other critical relief items on behalf of the Government, through the Office of Civil Defense. WFP's ETC and logistics support remain present across typhoon-affected areas.

Following rapid assessments, WFP plans to assist 380,000 of the most vulnerable people Surigao del Norte, Dinagat Islands, Bohol, and Southern Leyte through a combination of in-kind food (rice), vouchers, and cash. WFP's food distributions are ongoing in Surigao del Norte and Dinagat Islands, and voucher and cash programmes will begin in March. Three months of immediate assistance will be followed by three months of early recovery activities, ending in June 2022.

WFP's overall requirement stands at US\$35.6 million, of which US\$17.2 million is funded and \$2.9 million has been pledged. WFP needs an additional \$15.5 million to ensure full programme implementation over a six-month period.

## WFP Response

### **FOOD/CASH ASSISTANCE**

- WFP is providing emergency food assistance to typhoon-affected families in Caraga. Rice distributions are ongoing in Dinagat Islands and Siargao Island – clusters of islands in northeastern Mindanao that bore the brunt of the typhoon.
- In Dinagat Islands, WFP has reached 25,430 people (5,086 families) out of 50,000 targeted individuals since distributions began in early February. In Siargao Island, WFP has reached 23,400 people (4,680 families) out of 65,000 targeted people since distributions began on 12 February. WFP works in partnership with CARE (a non-governmental organization) in these two provinces. WFP has procured 1,155 mt of locally sourced rice for Siargao and Dinagat. Each family receives one 50kg sack of rice.
- Food distributions in Caraga are being monitored by non-governmental organization Philippine Business for Social Progress as WFP's third-party monitor. WFP is committed to transparency and accountability through distribution and post-distribution monitoring.

\*MOVE sets are rapidly deployable emergency communication devices integrated into custom vehicles that enable ICT-enabled support to disaster-stricken areas. MOVE is unique to the Philippines; the global prototype having been co-built and co-designed by DICT and WFP emergency telecommunications experts over the last year. These were used for the first time in response to the impact of Typhoon Odette.

## Preparations for Cash / Voucher Assistance ongoing

- WFP is launching a value voucher programme for a total of 10,000 families in Surigao City and Surigao del Norte. WFP has completed market and retailer assessments, which will soon be followed by assistance. The programme aims to meet the basic food needs of the affected population, based on assessments conducted by WFP in January.
- WFP is developing cash distribution plans for subsequent assistance in Southern Leyte and on the islands of Siargao, Dinagat, and Bohol.
- For the validation of beneficiary data and lists, WFP coordinates with government partners in preparation for the planned cash-based assistance in Southern Leyte, Bohol and Surigao City. This is conducted using SCOPE, WFP's beneficiary and transfer management platform, which supports the programme cycle from beginning to end.

## LOGISTICS SUPPORT

- Since the onset of Odette, WFP has mobilized 510 trucks and transported more than half a million (572,500) family food packs from the food packaging facilities of the Department of Social Welfare and Development. These deliveries represent half of the total number of family food packs dispatched by the Government through the National Resource Operations Centre in Metro Manila and Visayas Disaster Resource Centre in Cebu.
- The family food packs, together with other critical non-food items are being delivered to various destinations affected by the typhoon, including the provinces of Palawan, Iloilo, Negros Occidental, Negros Oriental, Bohol, Cebu, Southern Leyte, Dinagat Islands, Surigao del Norte (Siargao and Surigao City), and Agusan del Norte (Butuan City).
- Due to challenging weather conditions affecting Siargao and Dinagat Islands on 23 February, there have been delays in truck movements. Loading of additional trucks has been temporarily put on hold.

## EMERGENCY TELECOMMUNICATIONS

- WFP has provided 13 new satellite dishes (VSATs) to support DICT operations and supported the installation of the units: seven on Dinagat Islands, four on Siargao Island, one in Surigao City, and

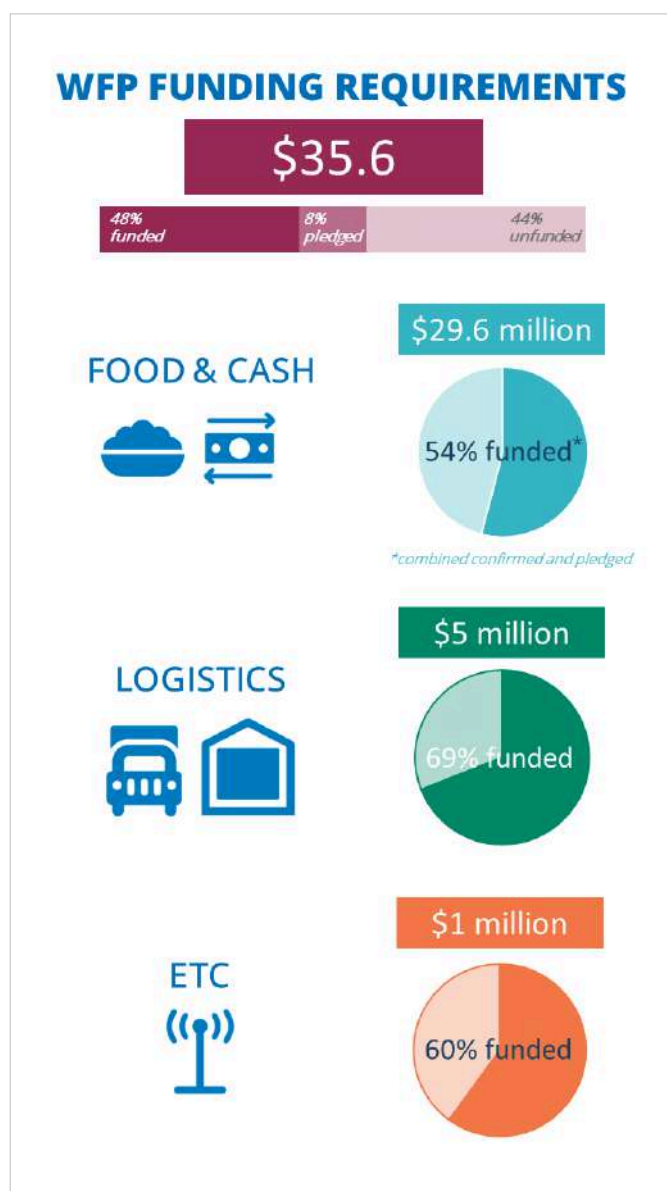
one in Maasin City in Southern Leyte. WFP has also strengthened DICT's staff capacity through training on VSAT installation and network establishment.

## Resourcing Update

- WFP has received contributions and pledges totalling 56 percent of its overall requirement of US\$ 35.6 million. It urgently requires an additional US\$ 15.5 million.
- WFP thanks the governments of Australia, Brazil, France, Japan, Ireland, the Republic of Korea, the United States of America, the UN Central Emergency Response Fund, and private sector partners for confirmed contributions (US\$ 17 million). WFP is also grateful to pledges (US\$ 2.9 million) from the Asian Development Bank and the private sector.



WFP has reached its initial fundraising goal of **500,000 meals** on its crowdfunding app **#SHARETHEMEAL**. At US\$ 0.80 cents per meal, WFP has raised US\$ 400,000 to meet the food needs of families affected by Typhoon Odette.



# TYPHOON ODETTE (RAI), PHILIPPINES:

## WFP RESPONSE OVERVIEW, 25 February 2022

### WFP IS RESPONDING RAPIDLY TO AFFECTED LOCATIONS

