

# WFP Democratic Republic of the Congo





## January Situation Report #33 – 7 February 2022

### Headline

- The Deputy Country Director, Natasha Nadazdin, accompanied the Finnish Ambassador, Pirjo Suomela-Chowdhury, and technical officers from the Belgian and Canadian embassies to Kalemie, 24 to 28 January. The delegation visited WFP's school feeding operations and met with local actors and partners.
- A shortfall of US\$12.2 million remains for UNHAS for 2022. Flights between Goma and Kinshasa and in the Kasai region have been put on hold until more funding is received.

### Situation Update

- Third African Rural Development Forum:** The DRC Government and the African Union's Development Agency (AUDA-NEPAD) hosted a conference, in part sponsored by WFP, in Kinshasa from 10 to 12 January. Several WFP Country Directors (CD) attended alongside Ministers and Governors from Eswatini, Lesotho, Madagascar, Malawi, Namibia, and Republic of Congo. WFP Namibia CD, George Fedha moderated the panel 'Addressing Food Vulnerability in Achieving Rural Transformation'. Julie Tshilombo, DRC National Coordinator for the Food Systems Summit, delivered the keynote speech. On 13 January, WFP Country Director, Peter Musoko, met with the DRC Minister of Planning, Christian Mwando Nsimba, and Julie Tshilombo, to emphasise the cooperation between the New Partnership for Africa's Development (NEPAD), WFP and the national government.
- Donor Mission to Tanganyika:** The Deputy CD, Natasha Nadazdin accompanied the Finnish Ambassador, Pirjo Suomela-Chowdhury, and technical officers from the Belgian and Canadian embassies to Kalemie, Tanganyika, 24 to 28 January. The delegation visited WFP's school feeding operations and met with local actors and partners.
- Ration sizes discussion:** WFP hosted a donor meeting on 21 January, to discuss varying ration sizes. The USA's Bureau for Humanitarian Assistance (BHA) and the UK's Foreign Commonwealth and Development Office (FCDO) presented their preferred approaches and WFP presented the options for operationalising the variations. As a result of subsequent

	<b>25.9 m highly food-insecure people</b> (51% female/49% male) (50% children/50% adults)
	<b>26 provinces affected</b>
	<b>5.6 m people displaced</b> (52% female/48% male) (58% children/42% adults)
	<b>6.3 m people reached in 2021</b> (59% female/41% male) (61% children/39% adults)
<b>Total 2022 funding requirements</b>	<b>US\$ 645.4 m</b>
<b>6-month Net Funding Requirements</b> (February – July 2022)	
Food Assistance	<b>US\$ 90 m</b>
Nutrition	<b>US\$ 11.5 m</b>
Other activities	<b>US\$ 16.5 m</b>
<b>Total</b>	<b>US\$ 118 m</b>

*Students learning at a school in Tanganyika province in January 2022, which is assisted through WFP's school meals programmes. | WFP/ Georgia Herde*

discussions with BHA, it was decided that WFP will pilot varying ration sizes based on household-level vulnerability in the Kasais, between February and September. The logistical feasibility, social cohesion, and food security outcomes will be shared with donors to inform decision-making and a potential roll-out to other parts of the country.

- Country Director Meetings:** WFP DRC CD, Peter Musoko, met with the Governor of the Strategic Reserve on 19 January and with Tony Mwaba, the Minister of Education, to discuss school feeding on 18 January. The CD joined the UN and humanitarian community in DRC in bidding farewell to the Humanitarian Coordinator, David McLachlan-Karr, on 25 January. He also attended the President's New Year's Address to the diplomatic corps in Kinshasa on 27 January. The CD also met with the Director of the Danish Refugee Council in DRC. The Deputy CD, Natasha Nadazdin, participated in the joint

annual review of the UN Cooperation Framework for Sustainable Development (UNSDCF 2020-2024), presented to Ministers, financial partners, and heads of agencies on 31 January.

## WFP Response

- Under the Country Strategic Plan 2021-2024, WFP continues its large-scale assistance targeting around **8.6 million** people with food and nutrition support in 2022.

### Food and Nutrition Assistance

- **Overview:** WFP's January distributions began in the final week of January due to delayed arrivals of cereals and a lack of flexible cash funding received for purchasing locally. Preparations are underway across WFP offices, including registering beneficiaries for cash activities with partners and preparing in-kind distributions for the cereal which is currently arriving at WFP sub-offices in Eastern provinces from the Dar Es Salaam corridor. WFP negotiated with port authorities in Tanzania to secure priority berthing for the products which are in short supply and a mission to Dar Es Salaam is being organised to review port arrangements.
- **Tanganyika:** WFP continues its January distributions, having reached **61,100** people so far for in-kind distributions and **28,000** for malnutrition treatment activities. Cash-based preparations, such as SIM card distributions, have completed in Mitwaba and Kabalo.
- **Kasai central and Kasai oriental:** The January in-kind food distribution is on-going in Mikalayi Health Zone and **50,700** beneficiaries have been reached. Cash distributions are ongoing in Katende health zone, having reached **11,000** beneficiaries so far. Nutrition products to treat or prevent malnutrition have reached **11,000** beneficiaries so far.
- **Kasai:** WFP's distribution of in-kind assistance to **28,000** beneficiaries, ended on 5 February. An additional **9,000** were reached with Malnutrition treatments.
- **Ituri:** WFP reached about **41,000** beneficiaries with in-kind assistance so far. Shortages of cereals and delays in signing MOUs for food assistance to South Sudanese refugees means that food distributions to the 190,000 beneficiaries targeted for in-kind activities are postponed. Funds from WFP's Immediate Response Account will support cash-based operations targeting 213,000 beneficiaries in February.
- **North Kivu:** For January distributions, WFP assisted **20,000** beneficiaries affected by armed conflict in Kitshanga, Masisi territory with cash. Another **13,000** received malnutrition treatments. In-kind activities are postponed due to the

shortfall in cereals observed throughout January.

- **South Kivu:** In-kind and cash distributions for January have been postponed. As soon as cereals arrive in the warehouses, WFP plans to provide food assistance to 170,000 displaced people, returnees and vulnerable host families. In January **7,820** people were reached with malnutrition treatment and prevention products.



### Protection, Gender and Accountability to Affected People

- WFP conducted two rapid protection risk assessments to inform unconditional food assistance and cash-based transfers in North Kivu and Kabalo (Tanganyika Province) respectively. WFP organised a two-day workshop on conflict sensitivity for WFP personnel in Goma, Kananga and Kalemie, facilitated by International Alert. It addressed the recommendations made in WFP's 2020 Conflict Assessment.



### Supply Chain

- **Fleet:** WFP's fleet is suffering under a shortfall of spare parts in areas of Eastern DRC. Commercial trucks are being used to mitigate the impact. Some areas are not serviced by commercial companies and are only reachable by WFP trucks. Distributions to several nutrition centres may need to be postponed.

## Clusters and Common Services



### Logistics Cluster (LogCluster)

- **COVID-19 Response:** The free logistics and common COVID-19-related services supported by Belgian funds has ended.
- **Information Management/Geographical Information Systems:** Documents and operational maps were shared through [the portal](#). Physical access alerts were monitored and shared via [dcr-logs@logcluster.org](mailto:dcr-logs@logcluster.org).
- **Gaps and Needs Exercise in DRC:** The final report is under review at HQ level, before dissemination.
- **Physical access:** LogCluster set up a committee to select two NGOs to implement road rehabilitation projects in South Kivu, thanks to US\$ 1 million from the humanitarian funds.



### Food Security Cluster (FSC)

- **Humanitarian Response Plan (HRP) 2022:** The HRP is due to be published soon, stating that in the absence of assistance, crisis- and acute-level food insecurity will persist.
- **Humanitarian Needs Overview (HNO) 2022:** The HNO has been [published](#), stating that 27 million people need assistance, of which 5.7 million are affected by displacement,

13.5 million are children, 1.1 million are pregnant and lactating women and girls, and 4.1 million have disabilities.

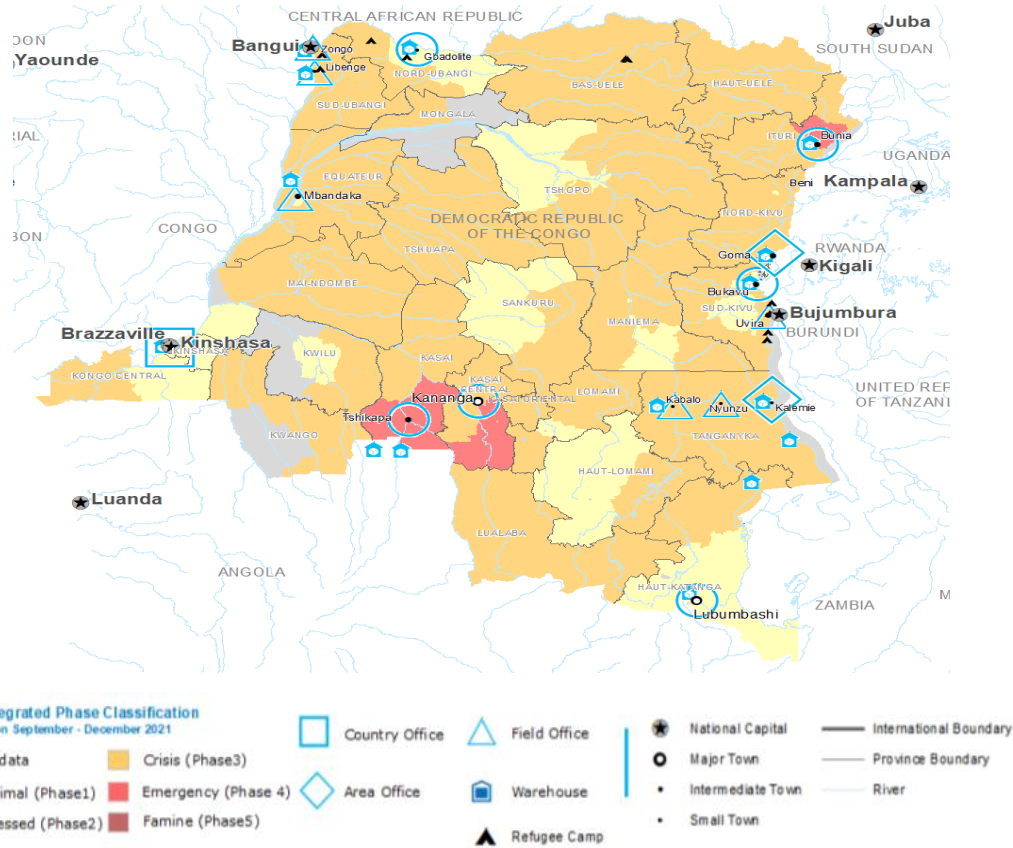


### **UN Humanitarian Air Service (UNHAS)**

- **Funding Shortfall:** Despite the decisions taken by the steering committee to reduce UNHAS' fleet, a shortfall of US\$12.2 million remains for 2022.
- **User Group Committee:** An ad-hoc meeting on 17 January informed users about the removal of certain UNHAS routes and destinations, effective from 1 February. This includes the route between Kinshasa and Goma and to and from the Kasai. UNHAS encouraged users to register with the Directorate-General for European Civil Protection and Humanitarian Aid Operations (ECHO) Flight for services in Tanganyika and to use commercial West-East DRC options. Funding mobilisation efforts were addressed, and users were requested to advocate at their level.
- In January, UNHAS and ECHO Flight project, managed by WFP/UNHAS, transported **4,019** passengers and **41 MT** of essential light cargo.
- **Evacuations:** UNHAS conducted **11** medical evacuations out of Roe, Walikale, Libenge, Ramba and Kalemie.
- UNHAS is facilitating rotations on the Bunia-Roe axis on Fridays and Saturdays in response to the crisis in Ituri.

### **Communications**

- **Influencer nutrition message:** WFP shot an audio and video message with football player Distel Zola on the importance of a varied diet for broadcast in February.
- **Home-grown school feeding launch:** The German-funded programme was launched in Nyiragongo territory in North Kivu in the presence of local government partners, covered with photo and video footage by local media.
- **Education Day:** On 24 January, the day was marked on social media with advocacy on school feeding.
- **Story on Tshikapa runway:** Ran in English on [wfp.org](http://wfp.org) and was picked up by [actualite.cd](http://actualite.cd).



Thank you to our generous donors in 2021 (listed alphabetically):



European Union  
Humanitarian Aid



Liberté • Égalité • Fraternité  
RÉPUBLIQUE FRANÇAISE



german  
cooperation  
DEUTSCHE ZUSAMMENARBEIT



From  
the People of Japan



SWEDISH INTERNATIONAL DEVELOPMENT  
COOPERATION AGENCY



Schweizerische Eidgenossenschaft  
Confédération suisse  
Confederazione Svizzera  
Confederaziun svizra



UKaid  
from the British people



United Nations  
CERF  
Central  
Emergency  
Response  
Fund



## Contacts

- Peter MUSOKO, Country Director: [peter.musoko@wfp.org](mailto:peter.musoko@wfp.org)
- Georgia HERDE, Junior Reports Officer: [georgia.herde@wfp.org](mailto:georgia.herde@wfp.org)
- For further information, visit the Democratic Republic of Congo page [here](#).