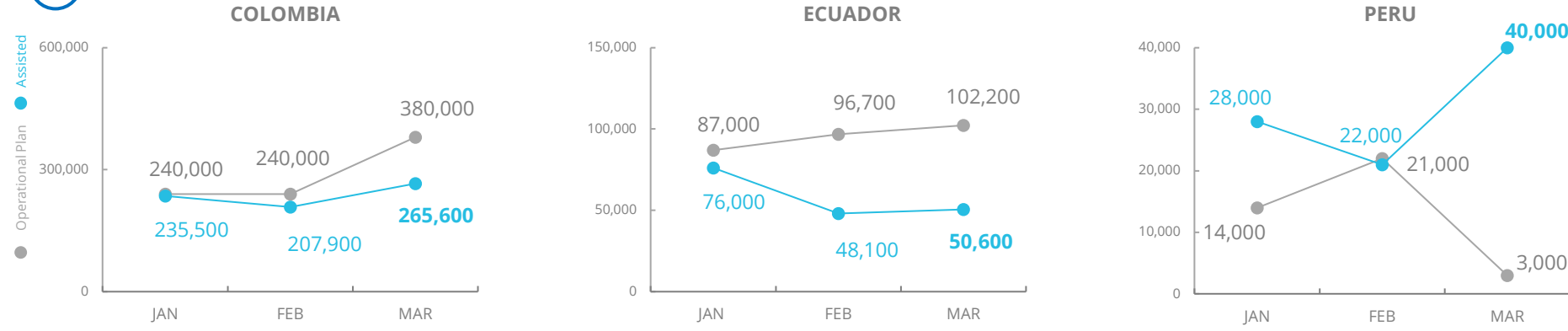


# Sub-regional migrant crisis – Colombia, Ecuador, Peru

## PEOPLE ASSISTED BY WFP



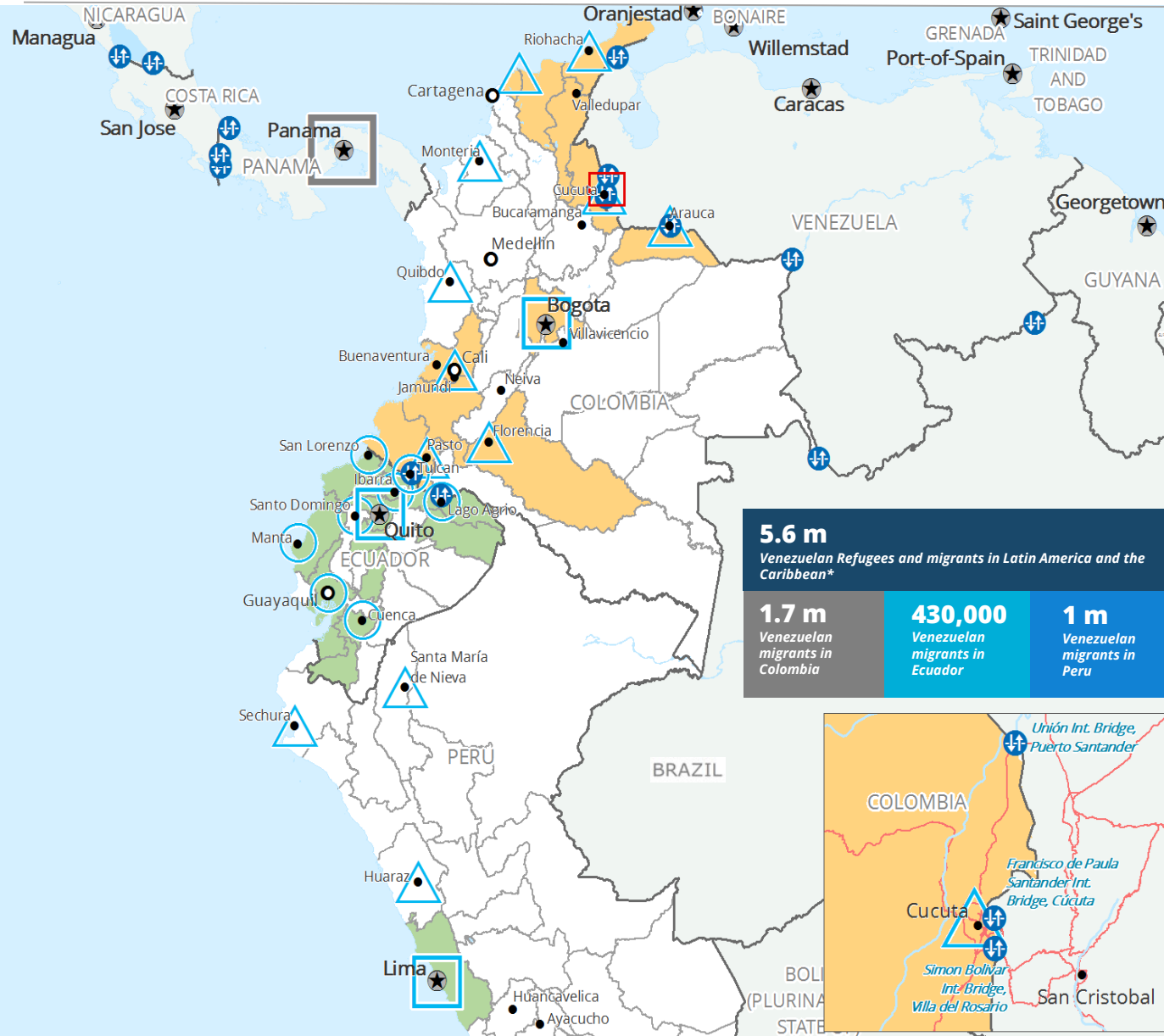
## FUNDING

June 2021 – November 2021

Net Funding Requirements (US\$)

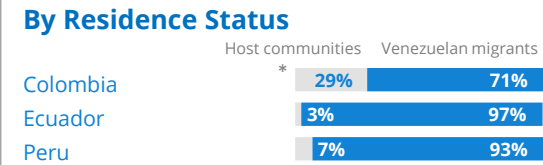
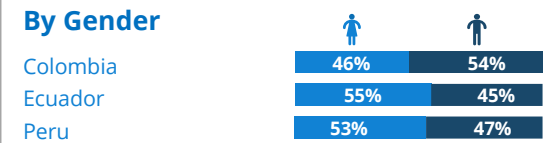
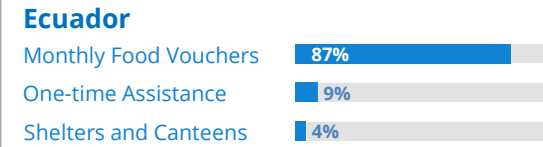
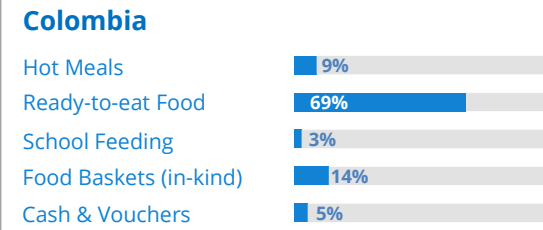
Colombia	43.5m
Ecuador	11.9m
Peru	11.1m
<b>Total</b>	<b>66.5m</b>

SOURCE: WFP, APR 2021



## OPERATIONAL PROFILE

Percentage of People vs Modality



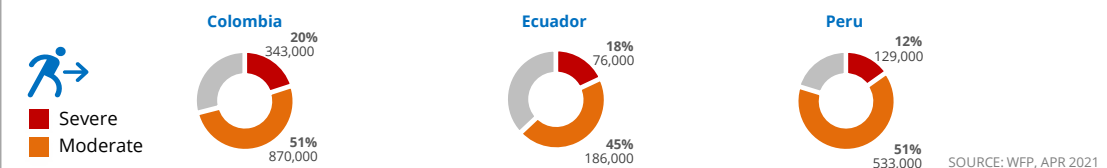
\*The figure includes Colombian returnees SOURCE: WFP, APR 2021

## COVID-19 OPERATIONAL IMPACT

- Status
- Colombia**
    - ✓ School feeding: Adaptation to take-home rations; Significant scale-up of food baskets (in-kind); Expansion of Cash and Vouchers as a safer deliver modality.
    - ✗ Hot meals: Most community kitchens are temporarily closed, smaller ones and those operating in shelters continue functioning.
    - ✓ Relief support to Venezuelan returnees through food kits; Emergency relief support in the Amazon region, including for indigenous populations; Expansion to urban areas, including cash assistance in Bogotá.
  - Ecuador**
    - ✓ Monthly Food Vouchers: Beneficiaries are still selected and assisted by phone. Strengthened assistance is given to the most vulnerable households with pregnant women and children. Due to the continuous COVID-19 restrictions, targeting new beneficiaries remains challenging.
    - ⚠ Shelters & Canteens: 26 out of 28 shelters and canteens assisted vulnerable population.
  - Peru**
    - ✓ Containment measures remain in place. Restriction levels vary per region, but does not have a significant impact on beneficiaries' capacity to redeem their cash assistance.

New Ongoing Partially Suspended Suspended

## Percentage of Migrants Severely and Moderately Food Insecure



SOURCE: WFP, APR 2021

  Regional Bureau  
   National Capital  
 + Border Crossing Point  
  International boundaries  
  Country Office  
 ● Major Town  
 WFP Operational Presence for L2 Response  
 Department boundaries  
○ Sub Office  
● Intermediate Town  
 WFP Operational Presence related to the migrants crisis  
△ Field Office

\*SOURCE: R4V, MAY 2021

**WFP LEVEL 2 EMERGENCY SINCE 30 MARCH 2018. L2 EXTENDED UNTIL 10 DECEMBER 2021.**

