



12 Dec 2024

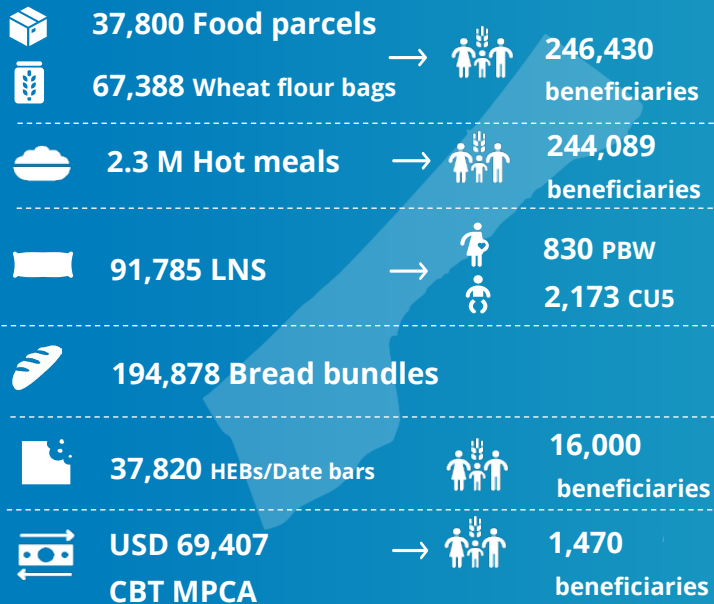
WFP PALESTINE EMERGENCY RESPONSE

External Situation Report 41

HIGHLIGHTS

- A deadly strike on a Khan Younis convoy on 11 December claimed over 50 lives and resulted in the loss of cargo, which underscores the urgent need for improved security. While the Philadelphi Road shows promise as a safer route for food deliveries into Gaza, persistent challenges such as militarization and looting continue to hinder its reliability. WFP is advocating for stronger protection, enhanced coordination, and international support to ensure the safety of humanitarian workers and the reliable delivery of aid in this high-risk environment.
- In early December, WFP continued to face significant challenges delivering food to Gaza, despite having sufficient supplies prepositioned outside the strip. As a result, WFP had to stretch resources and distribute reduced rations to maximize reach and mitigate social tensions and protection risks. ongoing conflict and widespread hunger highlight the urgent need for safe, uninterrupted access and expanded support.
- Overcrowding and severe congestion at kitchens and bakeries persist, leading to injuries among beneficiaries, including children, and staff.

DECEMBER IN NUMBERS – 1-7 December



PALESTINE 609,455 people reached (1.4 m planned)
GAZA 488,773 people reached (1.1 m planned)

West Bank 160,682 people reached (338,000 planned)

USD 2.1 M CBT Voucher → **153,712 beneficiaries**
USD 13,962 CBT MPCA → **175 beneficiaries**

WFP six-month net funding requirement **USD 204 M**

Dec 2024 - May 2025

These numbers are still subject to change due to the finalization of December 2024 reporting figures from partners. The total beneficiaries figure accounts for overlap between people receiving more than one type of assistance (LNS, HEB figures are not included). ACRONYMS: Pregnant and breastfeeding women and girls (PBWG) | Children under five (CU5) | High-Energy Biscuits (HEB) | Multipurpose Cash Assistance (MPCA) | Cash-based Transfers (CBT)

SITUATION UPDATE

- The **energy crisis in Gaza** worsens with winter, as northern areas rely on burning waste for fuel due to a 13-month shortage of cooking gas. Black market gas prices have surged by 663 percent in Deir Al-Balah and 917 percent in Khan Younis, disrupting food preparation, degrading dietary quality, and increasing health, protection, and environmental risks.
- The ground offensive in North Gaza continues**, notably in areas such as Beit Lahiya and Jabalia. Humanitarian aid has been blocked for over 65 days, leaving 65,000–75,000 people without food, water, electricity, or healthcare. Recently, about 5,500 people were forcibly displaced from three schools in Beit Lahiya to Gaza City.



WFP OPERATIONS

General Food Assistance (GFA) 1-7 December

- In December to date, WFP provided food and cash-based assistance to **448,773 people in Gaza with reduced rations and 160,682 in the West Bank***. With limited truck deliveries and worsening conditions in Gaza, WFP was left with no choice but to stretch resources by distributing smaller rations to reach more people — far from sufficient support in the face of growing desperation and unrelenting crises. WFP used carryover stocks, simplified meals, and measures to prevent looting, including clearing warehouses and distributing contingency stocks – a dangerous and unsustainable compromise. **The total beneficiaries figure accounts for overlap between people receiving more than one type and duration of assistance. Monthly distribution figures are estimates and subject to change pending final beneficiary reconciliation.*
- WFP distributed **37,800 emergency ready-to-eat rations (RTE)** reaching **247,430 displaced people**. However, beneficiaries in Middle and South Gaza received reduced rations, while beneficiaries in Gaza City received complete RTEs and an additional 25 kg of wheat flour.
- North Gaza bakeries are closed. Gaza City has four operational bakeries, hindered by fuel shortages. In Middle and South Gaza, all eight bakeries are closed due to a lack of flour and security incidents. Over **194,878 bread bundles** were produced by WFP-supported bakeries.
- WFP provided **2.3 million hot meals** to **296,786 people** across the Strip, through 65 kitchens.
- A total of 830 pregnant and breastfeeding women and girls (PBW/G), along with 2,173 children under five (CU5)**, received over 91,785 lipid-based nutritional supplement (LNS) packs as complementary feeding assistance to meet their increased nutritional needs. There is an urgent need for resupply of LNS in Gaza to support around 200,000 PBW/G and CU5.
- A total of 1,470 beneficiaries** received USD 69,407 in **multi-purpose cash assistance (MPCA)** used in designated shops in central Gaza, using e-wallets.
- In the West Bank, 160,682 people** redeemed USD 2 million through cash-based transfers – 153,712 redeemed **food vouchers** through the PalPay system, enabling them to purchase food items at WFP-contracted shops. 175 people, including displaced populations from **Gaza** and those affected by recent military incursions, received **MPCA** through the same process, redeemed as physical cash.



SUPPLY CHAIN

WFP TOTAL AID RECEIVED GAZA STRIP IN DECEMBER
410 TRUCKS | 5,393 mt

EGYPT CORRIDOR	JORDAN CORRIDOR	ASHDOD CORRIDOR
124 TRUCKS 1,644 mt Via Kerem Shalom and Gate 96	62 TRUCKS 862 mt Via West Erez (Zikim) and Kerem Shalom	225 TRUCKS 2,849 mt Via West Erez (Zikim) and Gate 96

- Since the start of the crisis, WFP has delivered 10,963 WFP trucks with at least 160,259 mt of food into Gaza.
- West Erez (Zikim) and Gate 96** are operational.
- Kerem Shalom (KS / Karam Abu Salem)**: is operational since 7 December amid high security risks.
- The **Philadelphi corridor** shows potential for increased food deliveries to via this crossing, but recent violent attacks highlight the need for better protection of staff and humanitarian supplies.
- Kissufim**: is operational but amid high insecurity. On 11 December, a WFP convoy faced delays, harsh treatment of staff, and looting, with only one truck completing its delivery.

CLUSTERS AND COMMON SERVICES



Food Security Sector (FSS)

- As of early December 2024, food security partners have over 100,000 mt of food commodities—sufficient to feed Gaza's 2.1 million residents for over two months—awaiting urgent delivery through various corridors to maintain food distribution.



Logistics Cluster

- The Logistics Cluster continues daily transport operations from the West Erez entry point. However, security incidents persist, impacting transport operations and resulting in commodity losses.
- Between 1 and 7 December, two direct convoys from Amman to Erez West delivered 50 trucks carrying 582 mt of health, shelter, food security, and WASH items. Of these, 30 inter-agency trucks were facilitated by the Logistics Cluster on behalf of six partners.
- As of 7 December, the Logistics Cluster has consolidated 24,409 m³ of humanitarian cargo at the common warehouse in Amman and received 53,421 m³ for common storage inside Gaza.



Emergency Telecommunications Cluster (ETC)

- Internet connectivity remains a primary communications challenge. Delays in approvals and denials for emergency telecommunication items continue to hinder the timely review and clearance of items for use in Gaza.



ACCOUNTABILITY TO AFFECTED POPULATIONS

- WFP's self-registration link** has facilitated over 1.5 million registrations for assistance since the start of the crisis, including 45,700 in December. Meanwhile, **WFP's inter-agency hotline** recorded 10,194 cases in December so far, with 69 percent related to WFP assistance.