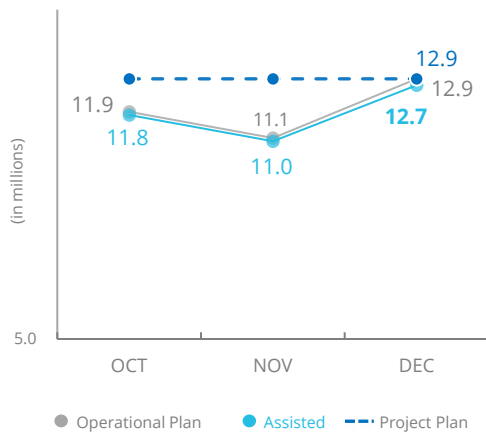
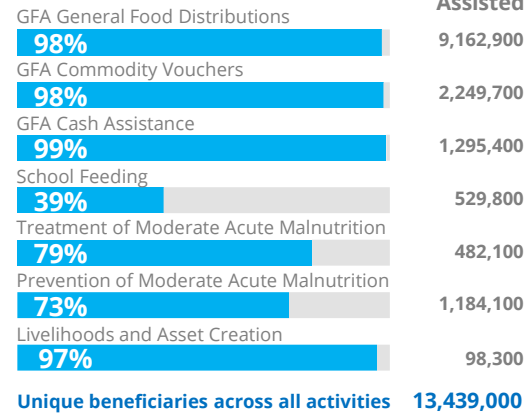


## PEOPLE ASSISTED General Food Assistance (GFA)

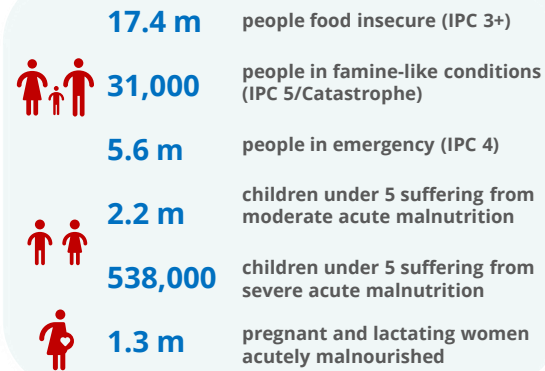


## OPERATIONAL PROFILE By Activity (December)



SOURCE: WFP, MAR 2022

## PEOPLE IN NEED 2022 IPC Analysis



Source: IPC (January - May 2022)

## FUNDING Yemen Interim Country Strategic Plan (ICSP)

March - August 2022

# US\$887.9 m

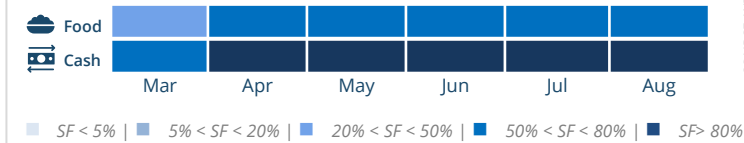
Net funding requirements

**2022 RESPONSE**  
Requirements: US\$1.98 bn  
Confirmed Contributions: US\$71.6 m

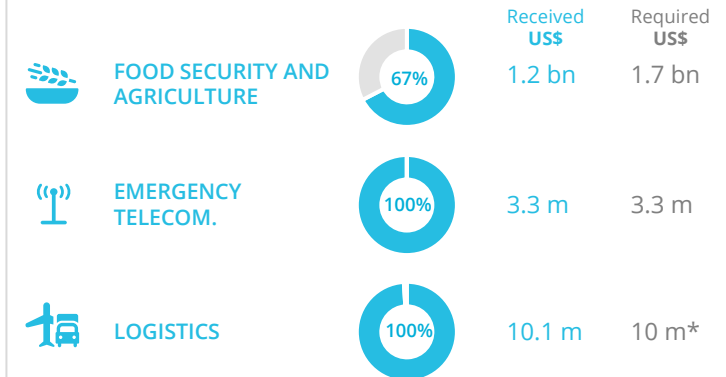
## AVERAGE MONTHLY FUNDING REQUIREMENTS (6 Months - US\$)

**103 m** (Food)      **58 m** (Cash)

EXPECTED SHORTFALLS (SF)

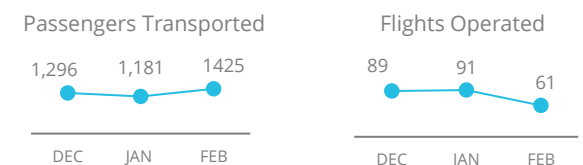


## WFP-LED AND CO-LED CLUSTERS (2021)



\*Based on updated implementation plan

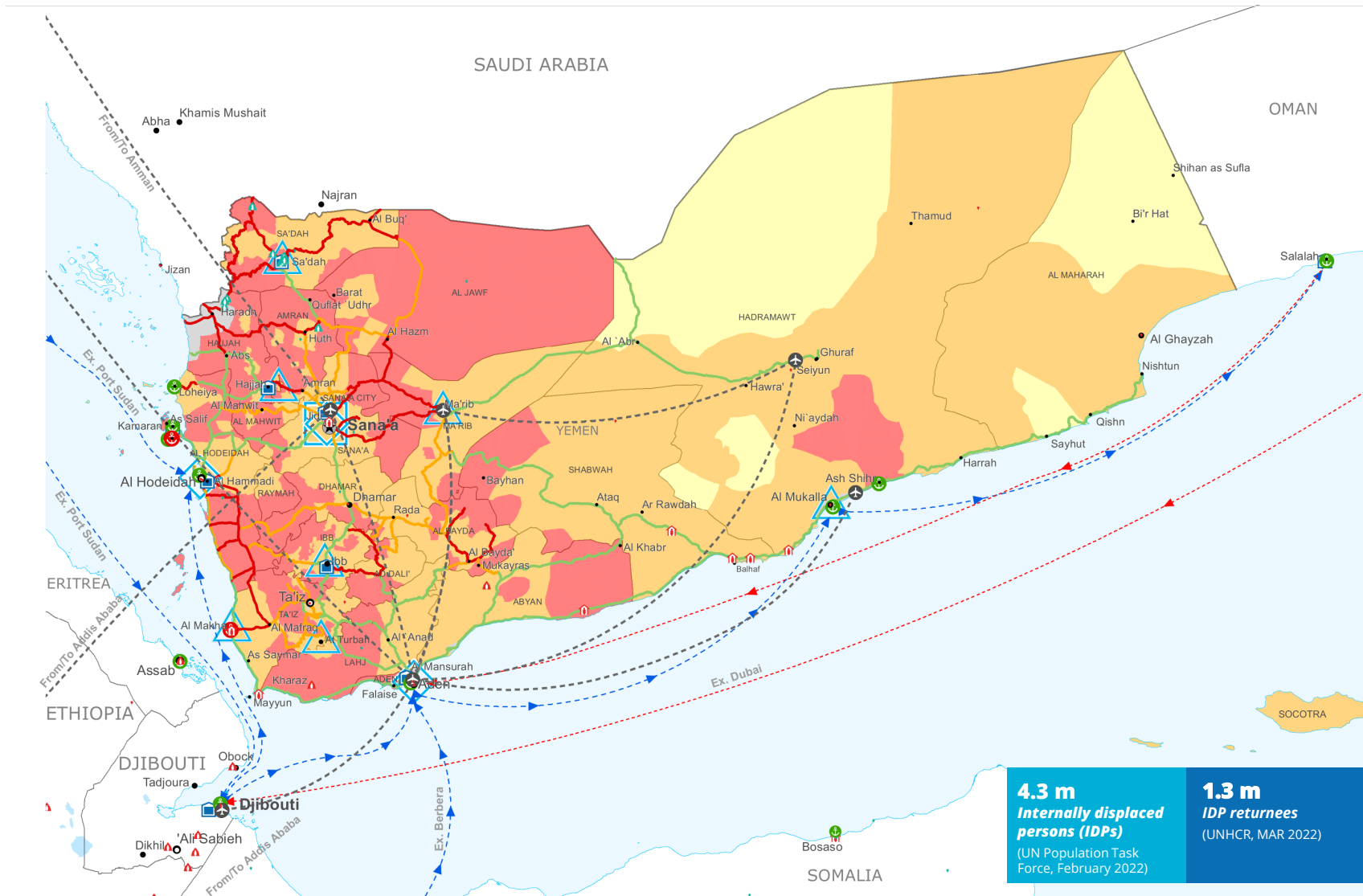
## UN HUMANITARIAN AIR SERVICES (UNHAS)



**WFP LEVEL 3 EMERGENCY SINCE 03 JULY 2015**



For more information, see WFP Yemen page [here](#)



## Integrated Food Security Phase Classification (IPC) analysis, January - May 2022



Sources: WFP, UNGIWG, GAUL, GLCSC, OCHA, UNHCR.  
The designations employed and the presentation of material in the map(s) do not imply the expression of any opinion on the part of WFP concerning the legal or constitutional status of any country, territory, city or sea, or concerning the delimitation of its frontiers or boundaries.  
© World Food Programme 2022.