

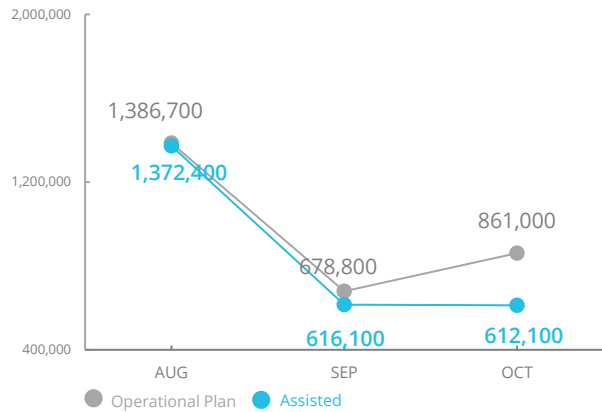


World Food Programme

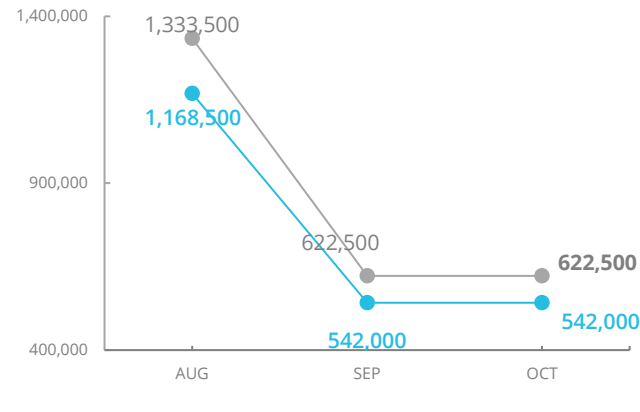
Emergency Dashboard | November 2021

# Burkina Faso

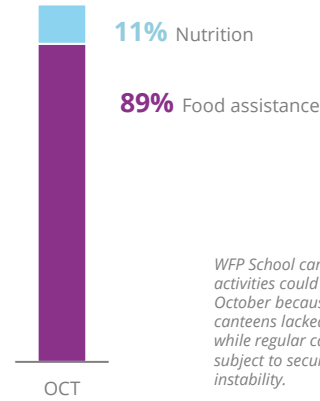
## PEOPLE ASSISTED Country Strategic Plan (CSP)



## PEOPLE ASSISTED Crisis



## OPERATIONAL PROFILE



WFP School canteens activities could not start in October because emergency canteens lacked resources while regular canteens were subject to security-related instability.

SOURCE: WFP, DEC 2021

## FUNDING

(Burkina Faso CSP) - Emergency Response:

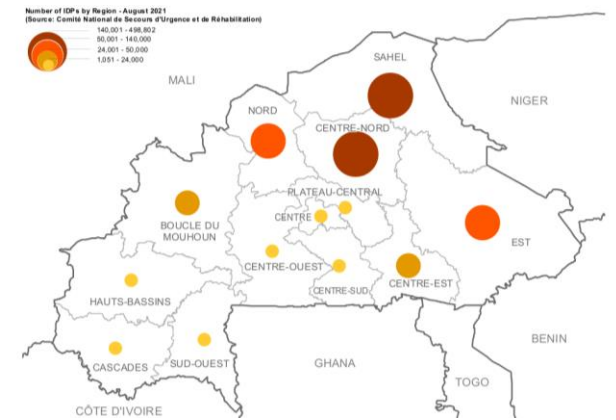
December 2021 – May 2022

Net funding requirements (6 months)

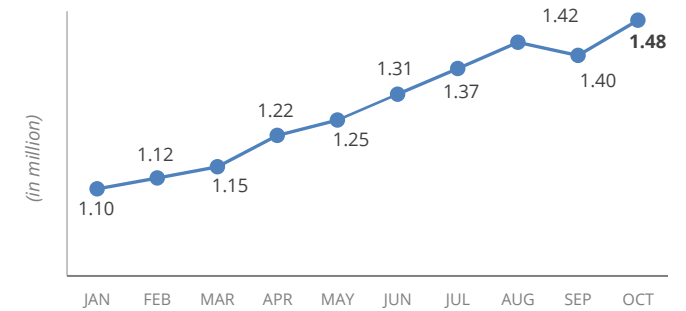
# US\$ 117.7m



## INTERNAL DISPLACEMENT CONCENTRATION AS OF AUGUST 2021

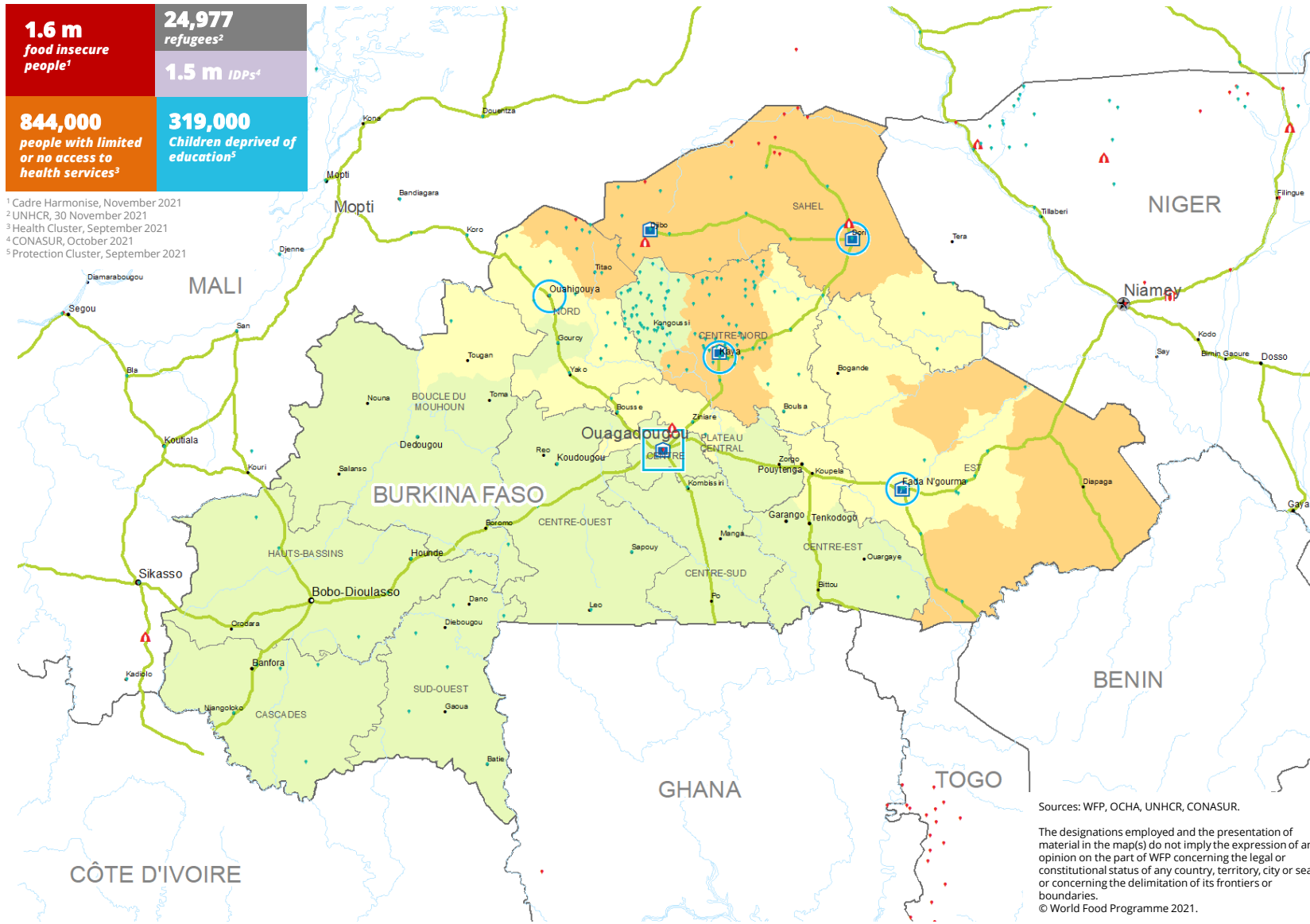


## INTERNAL DISPLACEMENT FIGURES 2021



<b>1.6 m</b> food insecure people <sup>1</sup>	<b>24,977</b> refugees <sup>2</sup>
<b>844,000</b> people with limited or no access to health services <sup>3</sup>	<b>1.5 m</b> IDPs <sup>4</sup>
	<b>319,000</b> Children deprived of education <sup>5</sup>

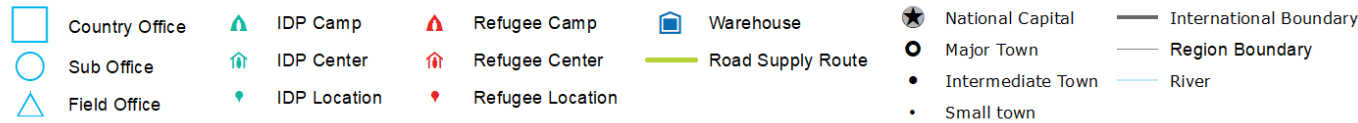
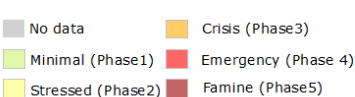
<sup>1</sup> Cadre Harmonisé, November 2021  
<sup>2</sup> UNHCR, 30 November 2021  
<sup>3</sup> Health Cluster, September 2021  
<sup>4</sup> CONASUR, October 2021  
<sup>5</sup> Protection Cluster, September 2021



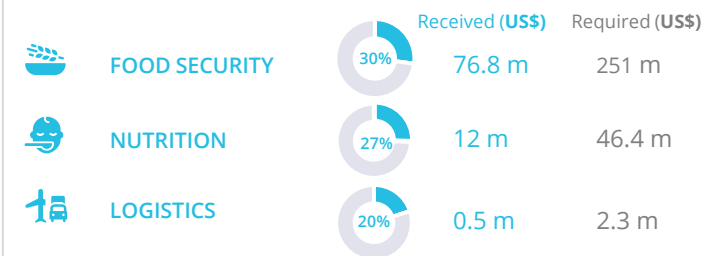
Sources: WFP, OCHA, UNHCR, CONASUR.

The designations employed and the presentation of material in the map(s) do not imply the expression of any opinion on the part of WFP concerning the legal or constitutional status of any country, territory, city or sea, or concerning the delimitation of its frontiers or boundaries.  
© World Food Programme 2021.

### CH Food Security Classification October - December 2021



## WFP-LED AND SUPPORTED CLUSTERS



## UN HUMANITARIAN AIR SERVICES (UNHAS)



## WFP LEVEL 3 EMERGENCY

Level 2 Emergency since 10 May 2019 part of the Central Sahel Level 3 Emergency since 09 September 2019

SITUATION REPORT and COUNTRY BRIEF



SAVING LIVES  
CHANGING LIVES