

WFP PALESTINE EMERGENCY RESPONSE

Situation Report 27

Mohammed shaving a sandwich for lunch, his first meal of the day. WFP/Alj Adallah

HIGHLIGHTS

- Intensified conflict in northern Gaza is re-displacing families and seriously limits humanitarian operations, forcing food distribution points to close and evacuate. In addition, movements inside Gaza continue to be hindered: Missions have been denied, partners are being forced to shutdown, and limited resources have led to reduced rations. A ceasefire is urgently needed to stop the suffering and enable a safe, sustained multi-sectoral humanitarian response.
- Resuming the delivery of commercial goods to northern Gaza is crucial to meet the nutritional needs of the vulnerable population, especially since local vegetables and protein products are unavailable. It is also vital to address the fuel scarcity that is crippling public water distribution, electricity, and movement of aid.
- In view of the liquidity crisis in Gaza that is severely impacting household spending and access to essential goods, WFP launched a pilot multi-purpose cash program for 420 families in Deir Al Balah. This will allow families to meet their immediate needs, while also stimulating local markets and encouraging economic activity.
- In the West Bank, movement restrictions and violence are severely affecting daily life and economic stability. Action is needed to prevent further escalation of the conflict, which could threaten the food security of up to 500,000 people.
- Despite significant challenges, WFP has assisted 750,209 people in July alone. To continue supporting up to 1.4 million people monthly until the end of the year, WFP requires USD 302 million in funding.

JULY IN NUMBERS



750,209 people

assisted with general food assistance across Gaza and the West Bank.



639 WFP Trucks

delivered carrying 7,398 MT of food into Gaza in June, bringing the total to 7,248 WFP trucks carrying at least 119,697 MT of food into Gaza since the start of the crisis.



2024 funding status

Needs resourced

USD 261.7 M

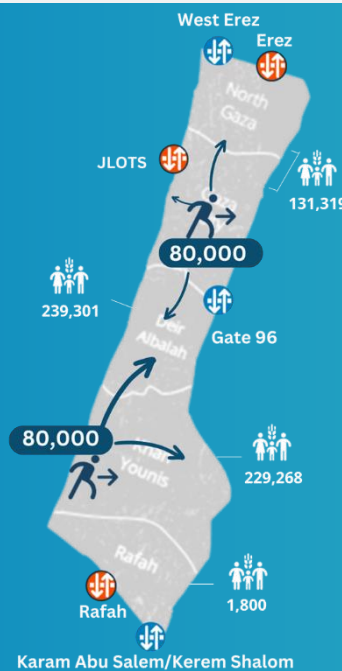
USD 302 M

Net funding requirement By end of 2024



1.4 million

affected people targeted monthly by WFP emergency assistance in Gaza.



Ongoing Israeli bombardment and ground fighting in Gaza are causing civilian casualties, displacement, and destruction. Nowhere in Gaza is safe, with conditions changing daily:

- On 13 July, Israeli airstrikes on Khan Yunis killed 90 and injured 300, damaging a residential building and key facilities. Two WFP partners briefly suspended operations but resumed shortly after.
- In the West Bank, security has worsened with many deaths, arrests, and severe mobility restrictions, impacting people's daily life and economy. At least 500,000 people are at potentially high risk of food insecurity in the West Bank, should the situation further deteriorate.



Crossing status (blue open, red closed)



1-13 GFA unique beneficiaries

SITUATION UPDATE

- The liquidity crisis in Gaza has drastically contracted consumer spending, limited access to essential goods, and strained businesses' ability to buy goods and pay wages, amplifying the reliance on humanitarian aid.
- In July, only 25 percent of fuel needed for humanitarian operations entered Gaza, causing a 40 percent drop in public water access.
- At least 153,750 homes are destroyed and 321,000 damaged. Gaza City neighbourhoods hit last week are disaster zones with 85% of buildings destroyed.



WFP OPERATIONS

General Food Assistance (GFA)

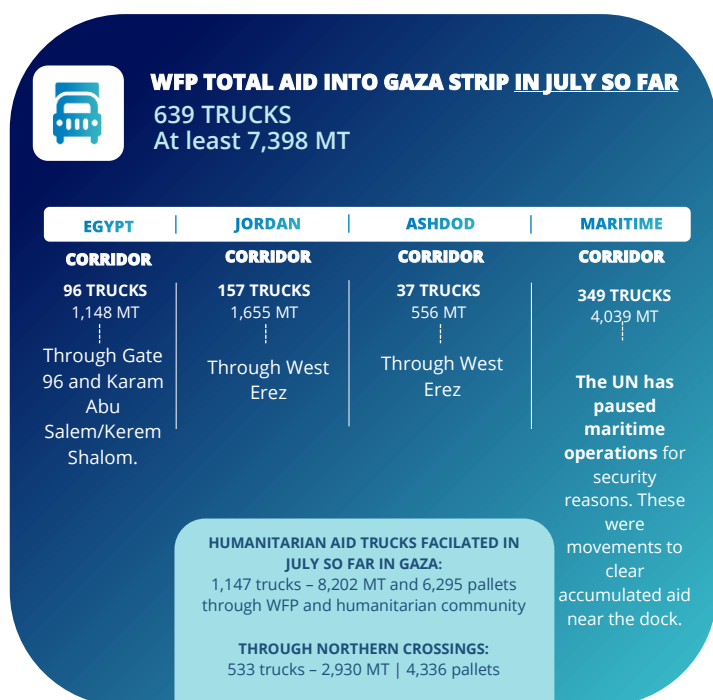
- In July so far, WFP reached an estimated **750,209 vulnerable people*** with in-kind and cash-based general food assistance across Gaza and the West Bank. In the **Gaza Strip** alone, WFP reached **601,689** people.

*The total beneficiaries figure accounts for overlap between people receiving more than one type and duration of assistance. Please note these figures are preliminary and subject to change upon confirmation.

- In the Gaza Strip, WFP distributed around **176,198 partial food parcels** enough to last for 15 days for **505,620 people** - displaced persons (IDPs) in UN-designated shelters, informal camps and within host communities – and over **594,692 bread bundles** through bakeries.
- In July so far, WFP provided around **3.8 million hot meals** through a network of 80 community-kitchens to **184,899 people**; 95 percent of which were distributed in central governorates of Deir Al Balah and Khan Younis.
- 2,273 pregnant and breastfeeding women and 4,713 children under five received around 130,785 Lipid-based nutritional supplements (LNS)** packs as complementary feeding assistance to meet their increased nutritional needs.
- In the **West Bank**, in July, **148,520 people redeemed their cash-based transfers** enabling them to purchase food items from local stores.

Supply Chain

- Since the start of the crisis, until 15 July, WFP has delivered **7,248 WFP trucks** carrying at least **119,697 mt** of food into Gaza.



CLUSTERS AND COMMON SERVICES

Food Security Sector

- As of mid-July, almost 200 kitchens run by 16 partners provided at least 700,000 cooked meals daily to families across the Gaza Strip.
- Partners distributed around 36 mt of fodder to livestock-keeping households in southern and central Gaza, supporting animal survival and local production

of nutritious food. Resuming agricultural activities, including small-scale gardening, is crucial for diet diversity and reducing food gaps. Additionally, efforts are underway to verify and include vulnerable households experiencing frequent displacement in monthly food assistance.

Logistics Cluster

- On 7 July, the Logistics Cluster conducted an overall assessment of cargo backlogged at the Karam Abu Salem/Kerem Shalom platform and is notifying partners about the status of the identified pallets.
- In support of the Jordan corridor and as of 13 July, the Logistics Cluster has consolidated 14,361 m³ of humanitarian cargo at the Logistics Cluster common warehouse in Amman. Since November 2023, a total of 66 humanitarian convoys were facilitated through this corridor, dispatching 1,624 trucks with 21,892 mt of aid into Gaza on behalf of 22 partners. Between 7 and 13 July, three direct convoys with a total of 80 trucks were dispatched with food, WASH and shelter items. All the convoy information is available on the [interactive dashboard](#).

Emergency Telecommunications Cluster (ETC)

- Voice services are limited due to fuel shortages and few operational towers. Internet access is worsening as displacement continues. There is limited internet availability in Rafah, Deir Al Balah, North Gaza, and Gaza City due to infrastructure destruction and fuel shortages.
- Satellite phone services remain operational across Gaza. However, fuel shortages pose a risk of shutting down Mobile Network Operators (MNOs) and Internet Service Provider (ISP) services. The ETC highlights need for fuel, spare parts, and safe access to repairs and restoration of services.

ACCOUNTABILITY TO AFFECTED POPULATIONS

- WFP's self-registration link to improve data collection and beneficiary management attracted **57,966 new registrations** in July so far, 769,071 since its launch.
- WFP's **inter-agency hotline** available for people requesting and inquiring about humanitarian assistance answered **15,490 calls in July** so far, with 18,837 cases logged, 36 percent of which were related to WFP food assistance.
- WFP has launched a chatbot** allowing vulnerable people to quickly retrieve personalized specific information about WFP assistance. This two-way interactive dialogue aims to enhance accessibility and provide instant answers to users' questions.