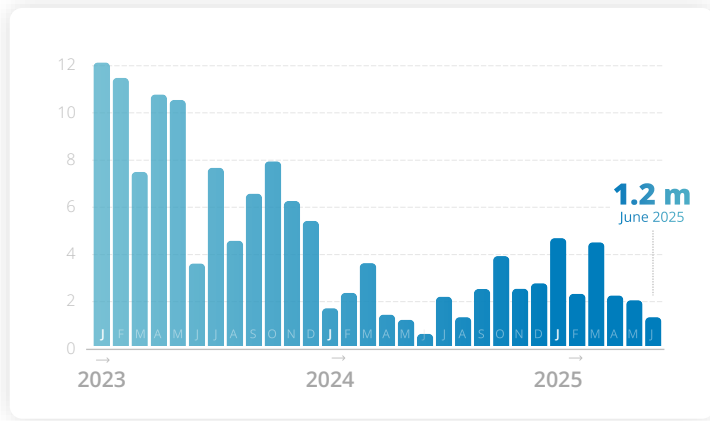




## PEOPLE ASSISTED

All activities, per month (in millions of people)

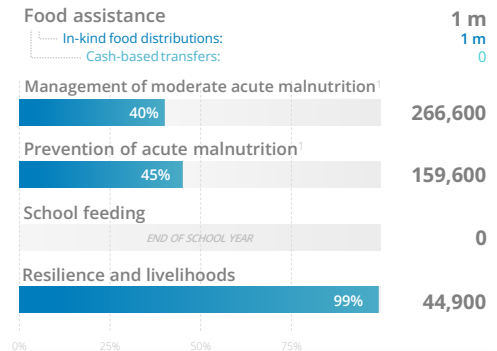


NOTE: Estimated unique beneficiaries assisted across all WFP activities. Excludes overlap between activities.



## OPERATIONAL ACHIEVEMENTS

By activity (June)



People assisted across all activities: **1.2 m**

NOTE: Monthly assistance figures are estimates and subject to change upon final beneficiary reconciliation. Percentages indicate reach against monthly operational plan. \* Nutrition figures are based on commodity dispatches.

SOURCE: WFP, as of 30 June 2025



## TOP DONORS

By 2025 contributions

- Germany
- Canada
- United Kingdom
- European Commission  
Humanitarian Aid and Civil Protection Office
- Sweden



## FUNDING OUTLOOK

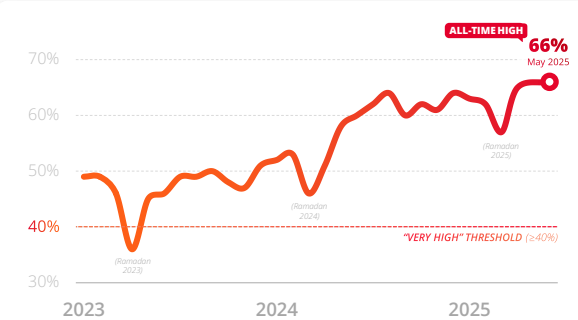
August 2025 → January 2026

**FUNDING GAP:** **85%** >>> **NET FUNDING REQUIREMENT:** **US\$ 553 m**

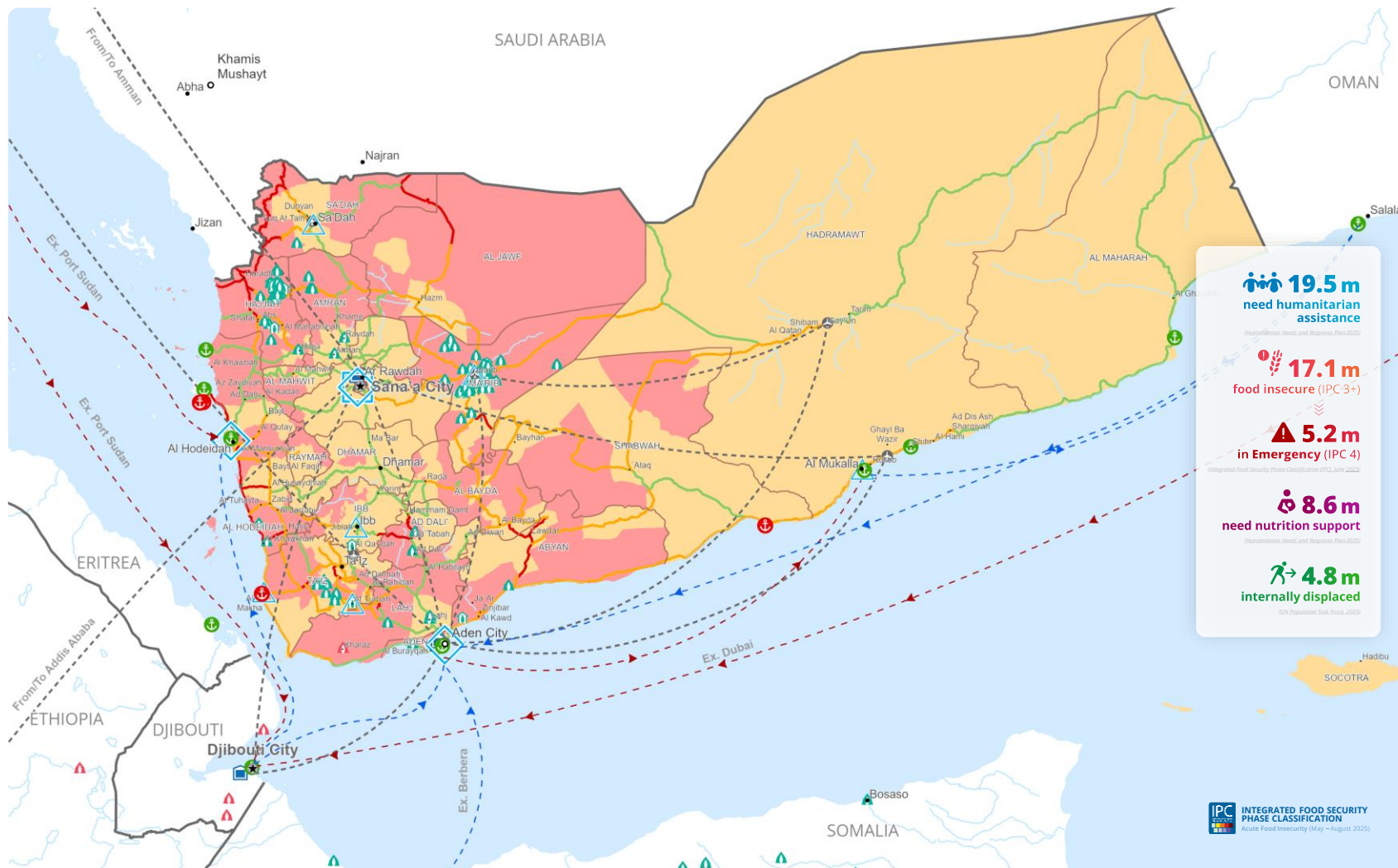


## FOOD INSECURITY

Rate of inadequate food consumption (FCS) [MORE DETAILS](#)



SOURCE: WFP/FAO/IFPRI/UNEP/WHO/World Bank/WHO/FAO

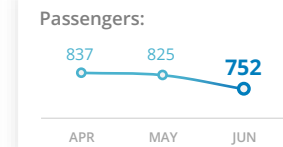
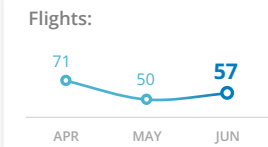


IPC INTEGRATED FOOD SECURITY PHASE CLASSIFICATION  
Acute Food Insecurity (May – August 2025)



## UNHAS

United Nations Humanitarian Air Service Yemen

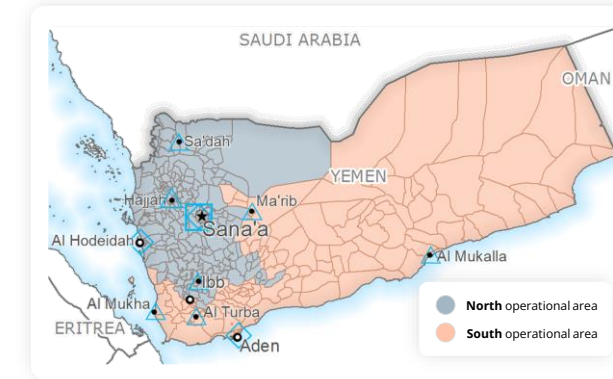


SOURCE: UNHAS Yemen



## OPERATIONAL PRESENCE

WFP Yemen



No data	Crisis (IPC Phase 3)	Country Office	Field Office	Port Closed	UNHAS Connection	Road Open	IDP Camp	Refugee Camp	National Capital	International Boundary
Minimal (IPC Phase 2)	Emergency (IPC Phase 4)	Area Office	Warehouse	Port Operational	UNHAS Route	Road with Restricted Access	IDP Center	Refugee Center	Intermediate Town	Governorate Boundary
Stressed (IPC Phase 2)	Catastrophe (IPC Phase 5)			Port with Restricted Access	Supply Route Open	Road Closed	IDP Location	Refugee Location	Small Town	River

Produced by the WFP Yemen Country Office, in coordination with the WFP Operations Centre (OPSCEN) and the WFP Middle East, Northern Africa, and Eastern Europe Regional Office (MENA/EERO). The dashboard is based on best available information at the time of production, and information on future dashboards may vary as new information becomes available. The boundaries and names and the designations used on these maps do not imply official endorsement or acceptance by the United Nations.

WFP emergency response phase: **CORPORATE ATTENTION**

More information: **Situation Report #6, 16 July 2025**