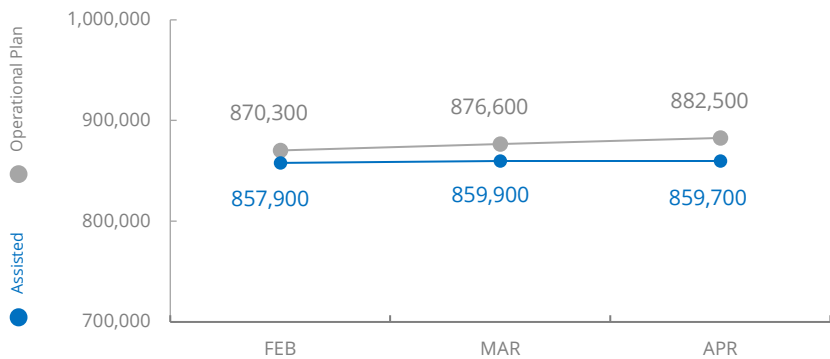


Bangladesh

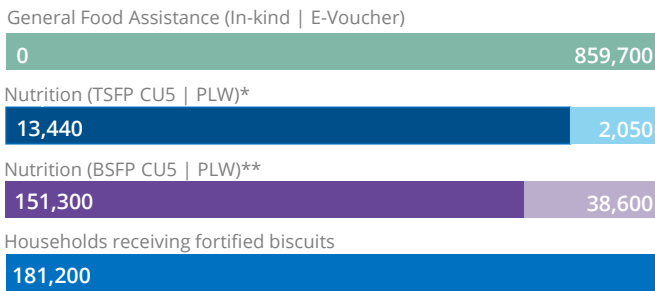


PEOPLE ASSISTED PER MONTH Bangladesh Rohingya Refugee Response

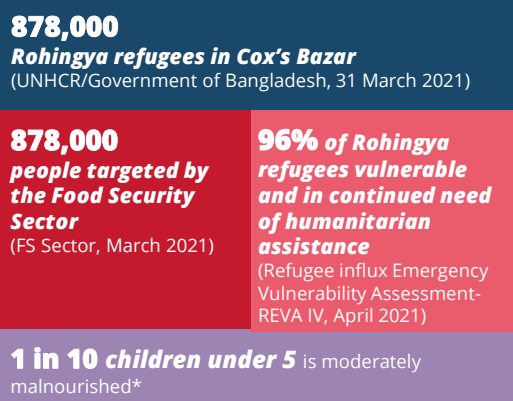
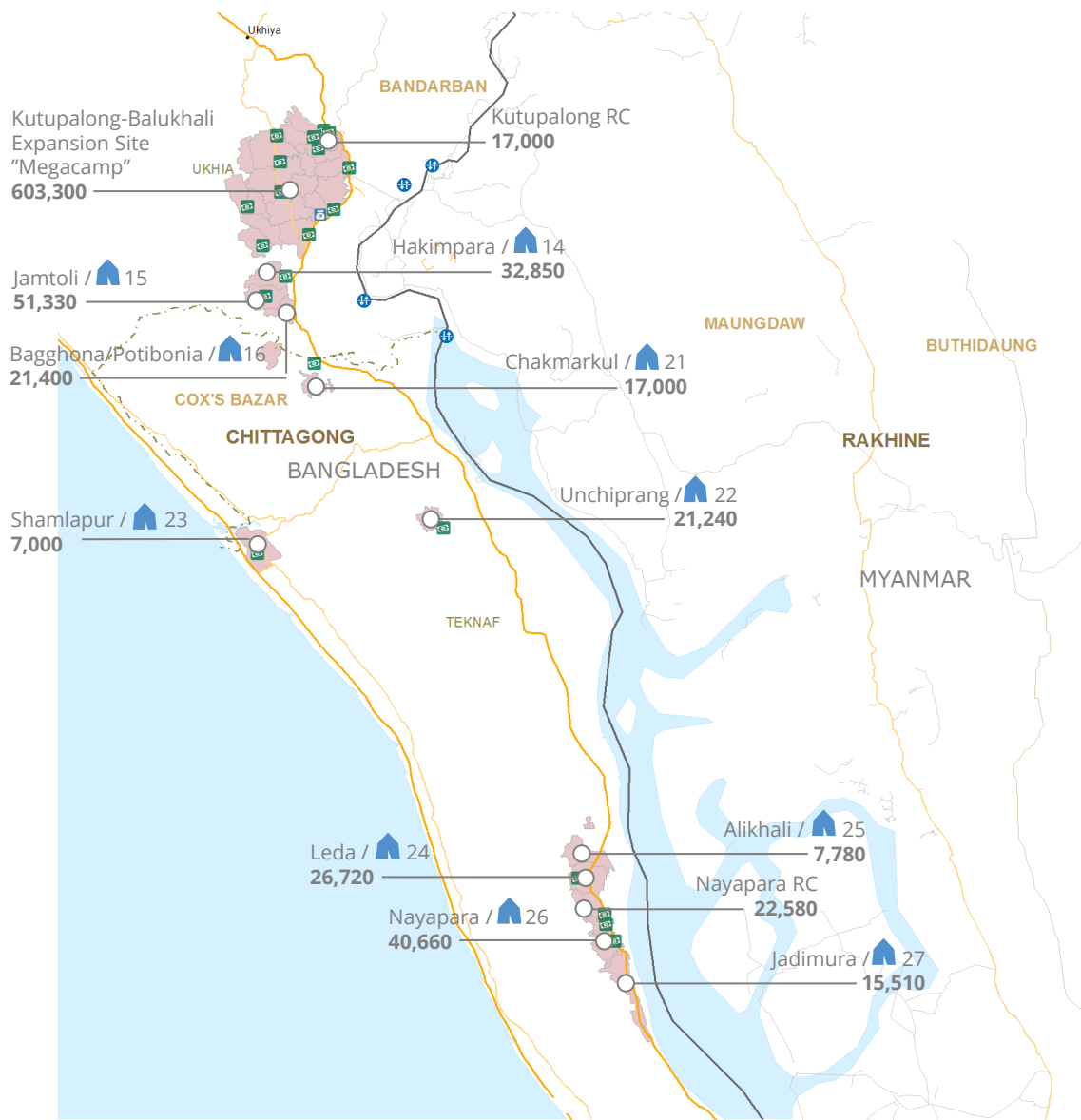
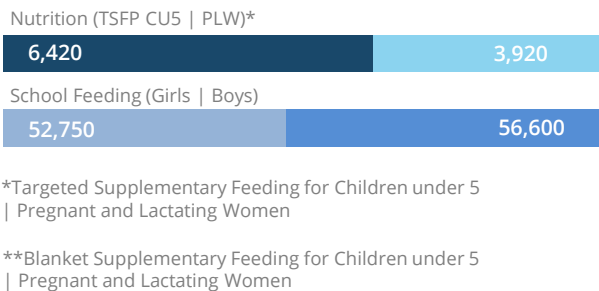


OPERATIONAL PROFILE April

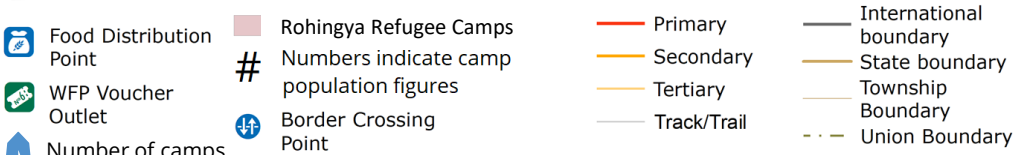
Refugee Communities



Host Communities



*2021 Joint Response Plan for Rohingya Humanitarian Crisis



FUNDING

Cox's Bazar Level 2 Emergency Response May - October 2021

US\$86m

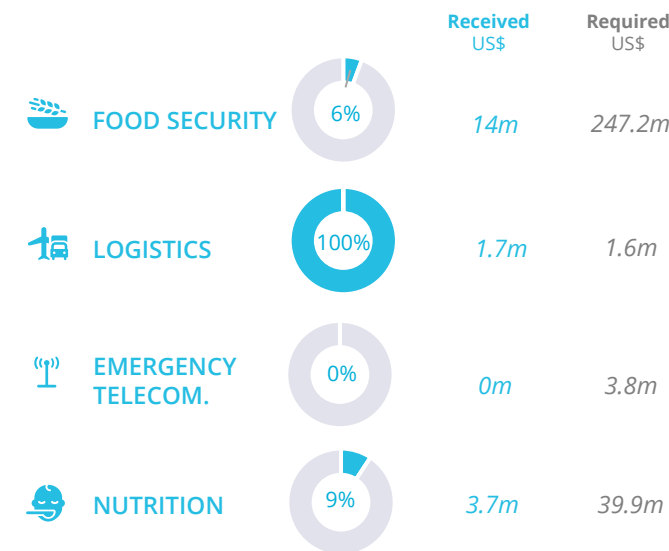
Net funding requirements

Average Monthly Funding Requirements May - October 2021

Food: US\$5m

Cash: US\$14.5m

WFP-LED AND SUPPORTED SECTORS



WFP LEVEL 2 EMERGENCY SINCE 27 DECEMBER 2018

For more information, see the **SITUATION REPORT** and **COUNTRY BRIEF**
www.wfp.org/countries/bangladesh

Bangladesh Country Strategic Plan (2017-2021)
www.wfp.org/operations/bd01-bangladesh-country-strategic-plan-2017-2021

