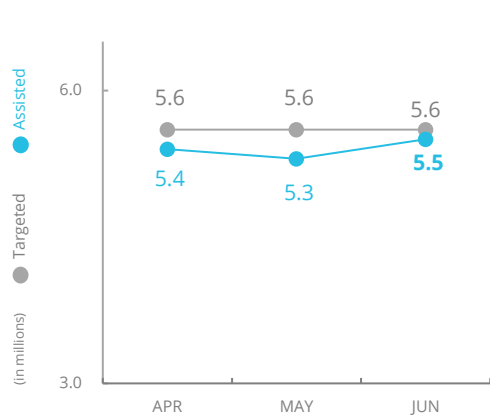
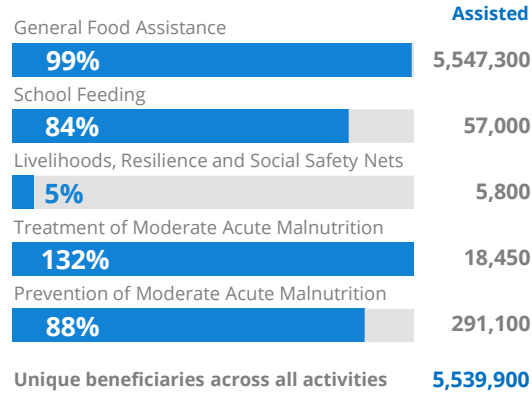


## PEOPLE ASSISTED General Food Assistance

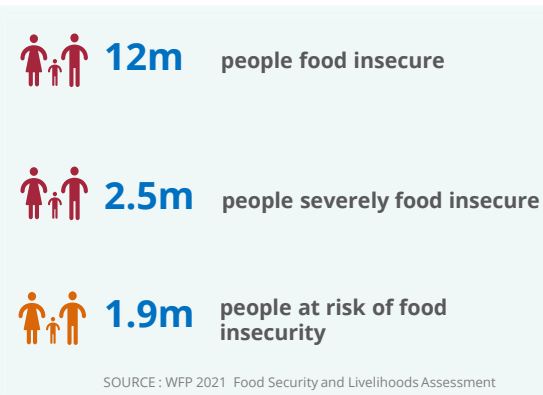


SOURCE: WFP, JUL 2022

## OPERATIONAL PROFILE By Activity (June)



## PEOPLE FOOD INSECURE

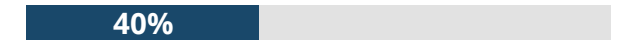


## FUNDING Syria Interim Country Strategic Plan (ICSP)

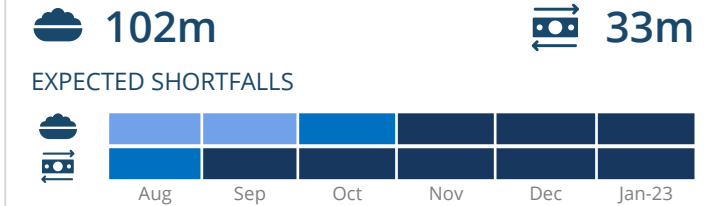
July – December 2022

**US\$681.8**  
Net funding requirements

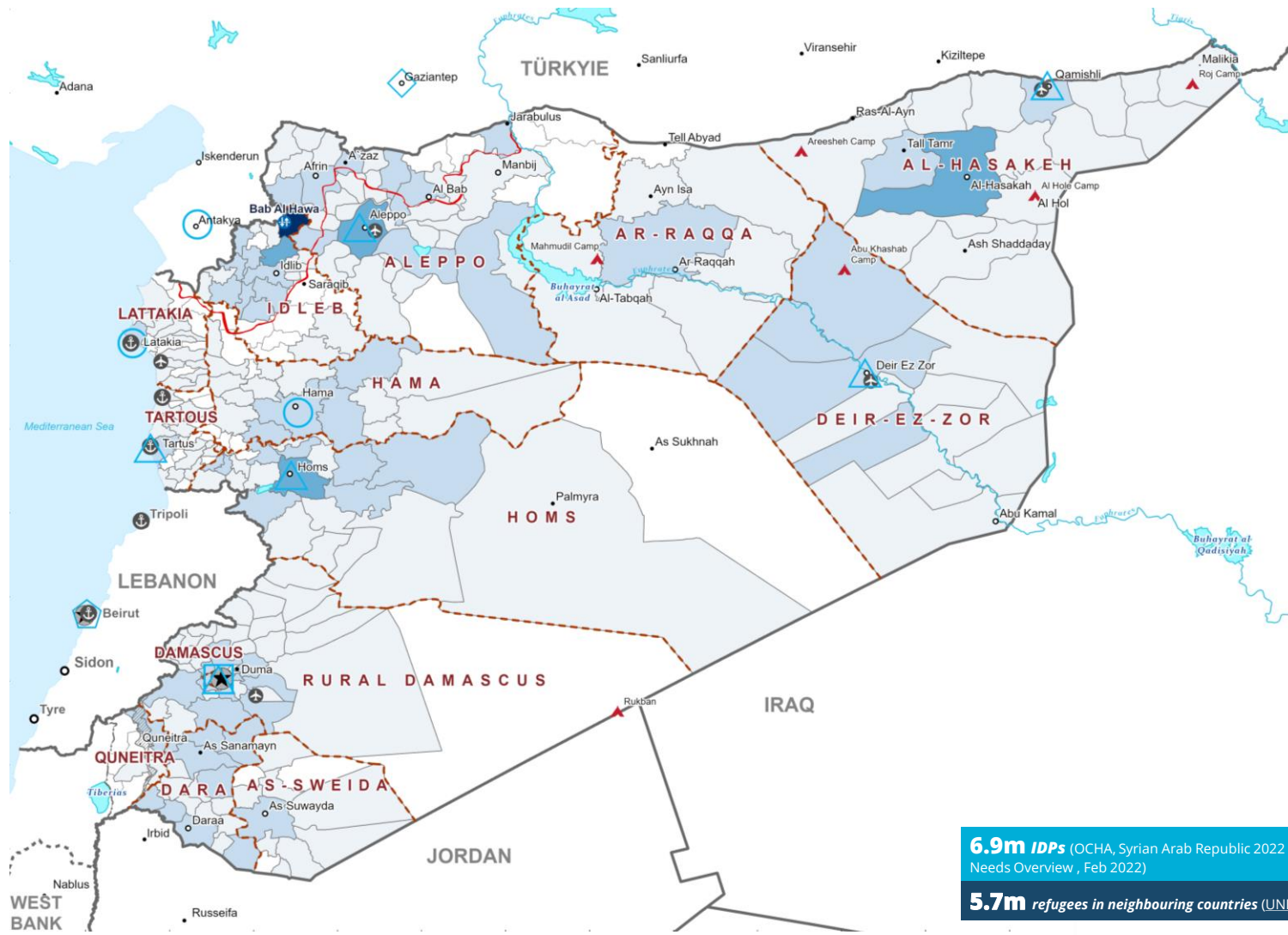
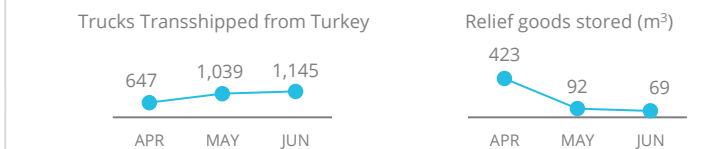
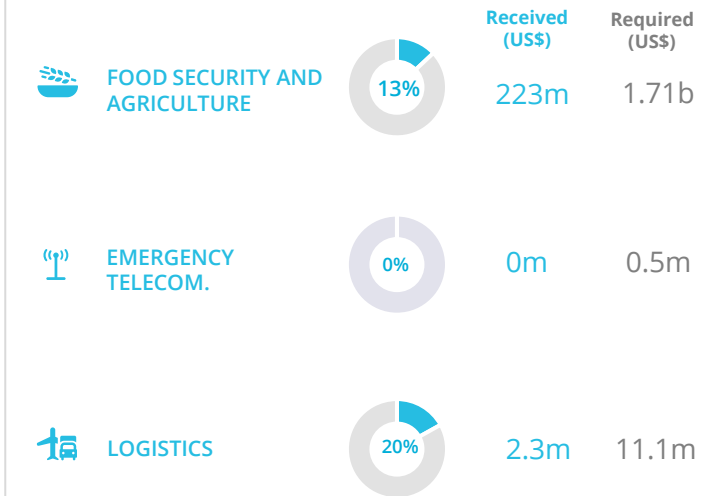
**2022 RESPONSE**  
Requirements: US\$ 1.37b  
Funded: US\$553.1m



## AVERAGE MONTHLY FUNDING REQUIREMENTS (6 Months - US\$)



## WFP-LED AND SUPPORTED CLUSTERS



**6.9m IDPs** (OCHA, Syrian Arab Republic 2022 Humanitarian Needs Overview, Feb 2022)  
**5.7m refugees in neighbouring countries** (UNHCR, Dec 2021)

Sources: WFP, UNGIWG, GAUL, GLCSC, OCHA, UNHCR.

The designations employed and the presentation of material in the map(s) do not imply the expression of any opinion on the part of WFP concerning the legal or constitutional status of any country, territory, city or sea, or concerning the delimitation of its frontiers or boundaries. © World Food Programme 2022.

### WFP Activities by Subdistrict 2022

