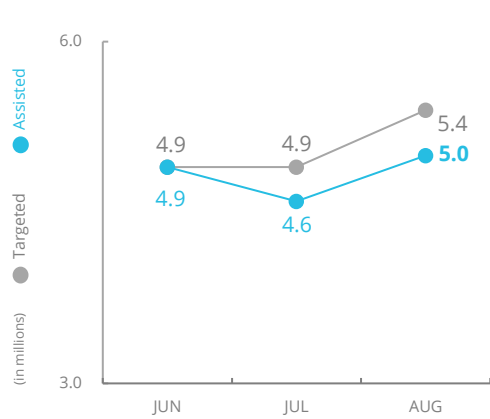


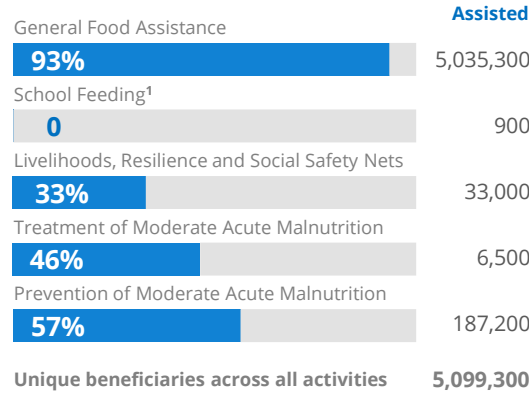
# Syria

## PEOPLE ASSISTED General Food Assistance



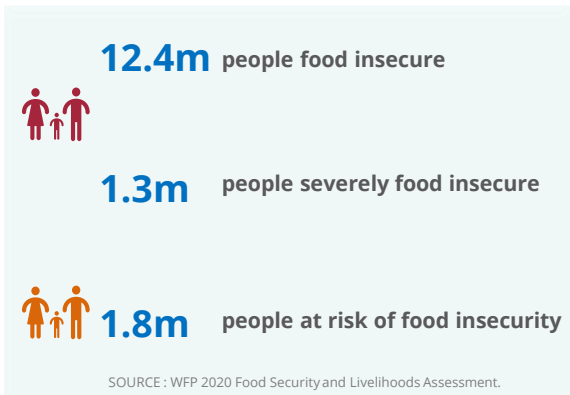
SOURCE: WFP, 19 OCT 2021

## OPERATIONAL PROFILE By Activity (August)



<sup>1</sup> Distributions will resume with new school year in September. \* Children supported by WFP at their final national exams as part of the national exams response by education sector.

## PEOPLE FOOD INSECURE



## FUNDING Syria Interim Country Strategic Plan (ICSP)

October 2021 - March 2022

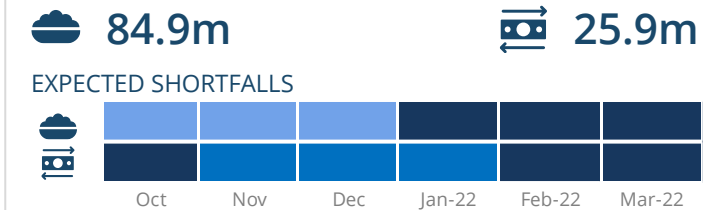
**US\$477.8m**

Net funding requirements

**2021 LEVEL 3 RESPONSE**  
Requirements: US\$1269.9m  
Funded: US\$630.7m

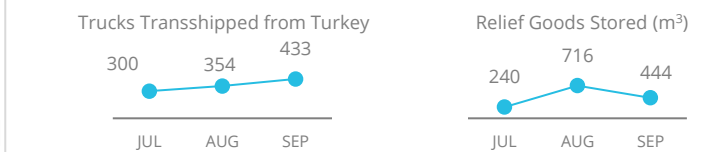
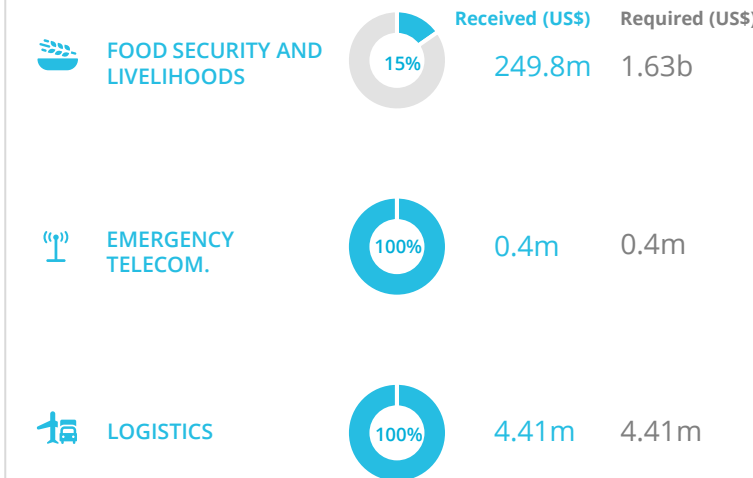


## AVERAGE MONTHLY FUNDING REQUIREMENTS (6 Months - US\$)



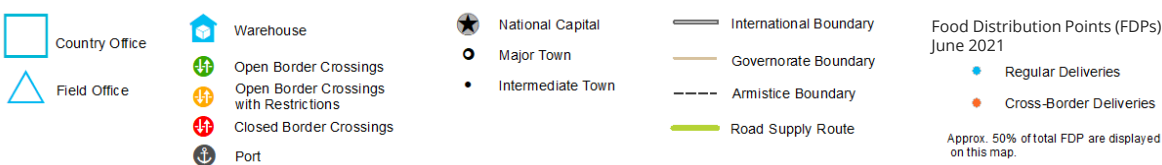
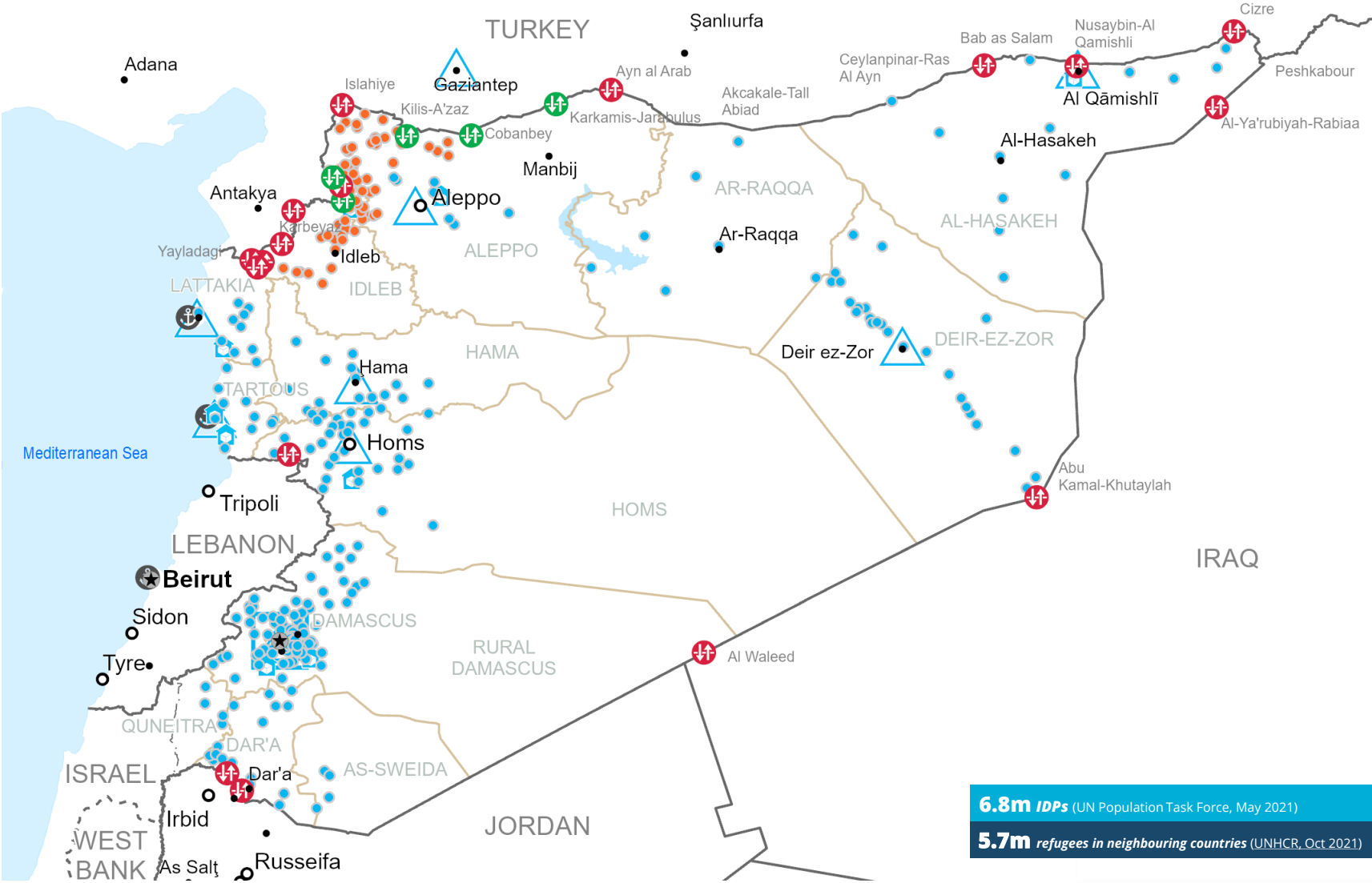
SOURCE: WFP, 15 OCT 2021

## WFP-LED AND SUPPORTED CLUSTERS



**WFP LEVEL 3 EMERGENCY** SINCE 14 DECEMBER 2012

SITUATION REPORT and COUNTRY BRIEF



Sources: WFP, UNGIWG, GAUL, GLCSC, OCHA, UNHCR.

The designations employed and the presentation of material in the map(s) do not imply the expression of any opinion on the part of WFP concerning the legal or constitutional status of any country, territory, city or sea, or concerning the delimitation of its frontiers or boundaries. © World Food Programme 2021.