



30 Oct 2024

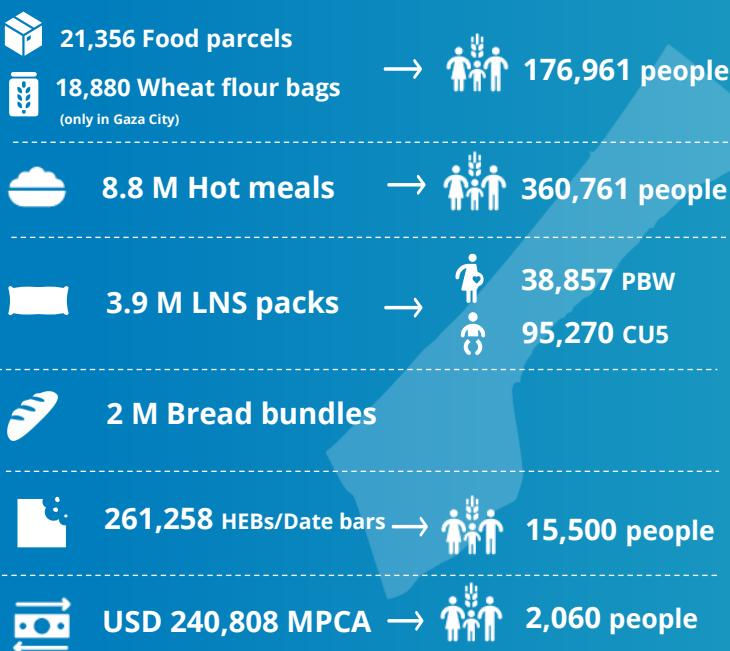
# WFP PALESTINE EMERGENCY RESPONSE

## External Situation Report 38

### HIGHLIGHTS

- North Gaza remains under siege since early October, with humanitarian agencies unable to reach people in need. Urgent international effort is required to allow the delivery of critical assistance and grant humanitarian agencies access to the area.
- As winter approaches, WFP warns that the lack of food and other vital humanitarian supplies entering the Gaza Strip could soon escalate into famine unless immediate action is taken. In October, WFP has only reached 42 percent of the 1.1 million people targeted for food assistance in Gaza, with reduced rations due to dropping aid levels.
- WFP is also deeply concerned about the new Israeli legislation affecting the UN Relief and Works Agency for Palestine Refugees in the Near East (UNRWA). UNRWA is indispensable in providing lifesaving aid and social services in Gaza. If implemented, this decision will have devastating consequences for the most vulnerable people.

### OCTOBER IN NUMBERS – 1-26 October



**Palestine** 635,054 people (1.4 million planned)  
**Gaza** 466,838 people (1.1 million planned)

**West Bank** 168,216 people (338,000 planned)

	USD 2.28 M →		165,758 people
	USD 169,831 →		2,458 people

**WFP six-month net funding requirement USD 178.6 M**  
*Nov 2024 - April 2025*

*These numbers are still subject to change due to the finalization of October 2024 reporting figures from partners. The total beneficiaries figure accounts for overlap between people receiving more than one type of assistance (LNS, HEB figures are not included). ACRONYMS: Pregnant and breastfeeding women and girls (PBWG) | Children under five (CU5) | High-Energy Biscuits (HEB) | Multipurpose Cash Assistance (MPCA) | Cash-based Transfers (CBT)*

### SITUATION UPDATE

- The ground offensive in **North Gaza** is intensifying around Jabalia, Beit Lahiya, and Beit Hanoon. Over the past three weeks, more than 71,000 people have been displaced to Gaza City, while around 100,000 remain in North Gaza, facing severe shortages of food, water, and medical supplies. Significant obstacles to deliver aid remained, particularly in October, with multiple coordination requests for critical aid missions and access requests denied.
- Meanwhile, in **Central and South Gaza** the collapse of local markets and essential goods shortages have increased the population reliance on small-scale aid.



Soaring firewood prices, scarce gas, and prolonged electricity cuts are worsening energy poverty, expected to deteriorate further with winter rains.

## WFP OPERATIONS



### General Food Assistance (GFA)

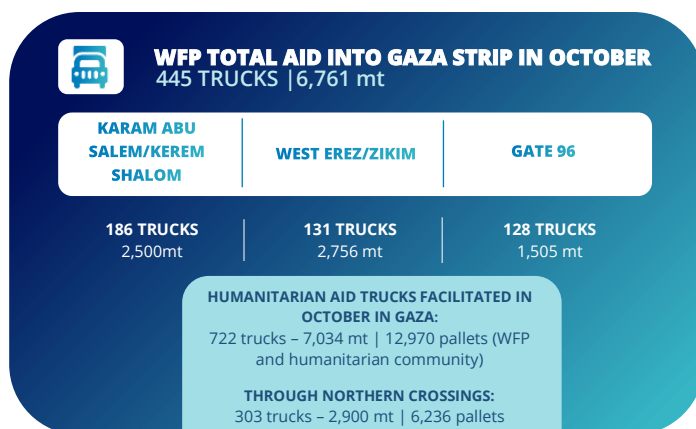
- In October, WFP provided in-kind and cash-based food assistance to approximately **635,054 vulnerable individuals across Gaza and the West Bank**. In the **Gaza Strip**, WFP reached **466,838 people\*** with reduced rations, due to the inability to replenish stocks amidst access constraints. *\*The total beneficiaries figure accounts for overlap between people receiving more than one type and duration of assistance. Monthly distribution figures are estimates and subject to change pending final beneficiary reconciliation.*
- WFP distributed **21,356 emergency rations of ready-to-eat meals (RTEs)** across Gaza - and **18,880 bags of wheat flour** in Gaza City alone - reaching **176,961 displaced people**. Of the RTEs, 72 percent were distributed in Gaza City to those newly displaced from North Gaza.
- North Gaza bakeries are closed**, while Gaza City has four operational bakeries. South and Middle Gaza bakeries face daily supply issues, leading to overcrowding and scarcity in bread supply. So far in October, **over 2 million bread bundles** (4,168 mt) were produced.
- WFP provided over **8.7 million hot meals** to **360,761 people** across the Strip. In North Gaza, all kitchens are inaccessible, while only eight kitchens are operational in Gaza City, and over 50 kitchens operating in southern and central Gaza.
- A total of **38,857 pregnant and breastfeeding women and girls, along with 95,270 children under five**, received over 3.9 million lipid-based nutritional supplement packs as complementary feeding assistance to meet their increased nutritional needs.
- In October, 73 percent of the 1,500 families targeted for **multi-purpose cash assistance (MPCA)** redeemed their entitlements.
- In the **West Bank**, **168,216 people** redeemed their **cash-based transfers**, allowing them to purchase food items from local stores.



### Supply Chain

- West Erez (Zikim)** has re-opened on 15 October, but delays at holding points, and multiple inspections limit the ability for bringing the aid into Gaza. Aid that has entered through this crossing in October has only been allowed to go to Gaza City.
- The Fence Road** is operational but constrained by the route's nature and limits on number of approved drivers allowed to operate on the road.

- Karam Abu Salem/Kerem Shalom** is generally operational but hampered by conflict-induced insecurity and looting. WFP is exploring alternative ways to dispatch goods.
- Since the start of the crisis, WFP has delivered 9,773 WFP trucks with at least 156,254 mt of food into Gaza.



## CLUSTERS AND COMMON SERVICES



### Food Security Sector (FSS)

- The FSS and Nutrition Cluster are advocating for sustained access to food, medical supplies, water, and essential services to avert famine, as over 1.7 million people in Gaza haven't received monthly food rations.
- The FSS is expanding efforts in northern Gaza, focusing on emergency food coordination for newly displaced individuals in Gaza City.
- By late October, 100,000 mt of food – sufficient for over two months' rations for the population – awaits transport into Gaza, with spoilage risks rising as some items near expiry.
- More details in the [Food Security Sector Emergency Response dashboard](#).



### Logistics Cluster

- Access and security constraints continue to limit the Logistics Cluster's ability to facilitate logistics services at Gaza's entry points. Transport operations at Karam Abu Salem/Kerem Shalom were not possible but continued at West Erez.
- From 20-26 October, two direct convoys from Amman to West Erez delivered 60 trucks, including 30 inter-agency trucks with 290 mt of critical supplies for five partners. Convoy details are on the [interactive dashboard](#).
- As of 26 October, 19,070 m<sup>3</sup> of cargo have been consolidated in Amman, and 47,297 m<sup>3</sup> stored inside Gaza.



## ACCOUNTABILITY TO AFFECTED POPULATIONS

- WFP's self-registration link** has facilitated over 1.2 million registrations, including 52,582 in October. Meanwhile, **WFP's inter-agency hotline** recorded 26,758 cases, with 49 percent related to WFP assistance.