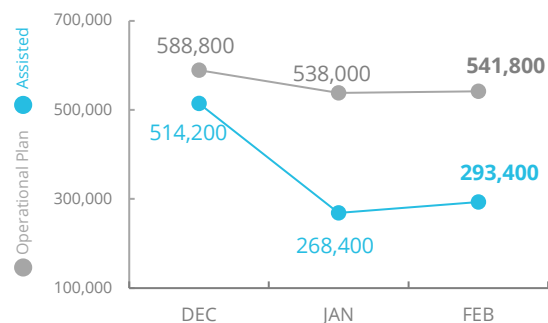
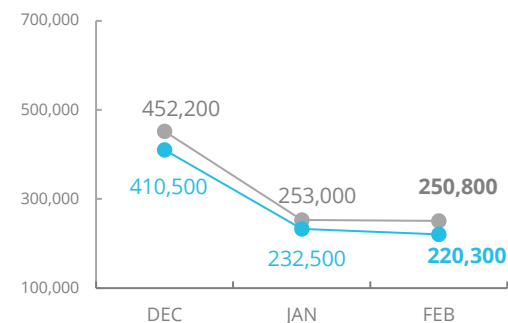


## PEOPLE ASSISTED Country Strategic Plan (CSP)

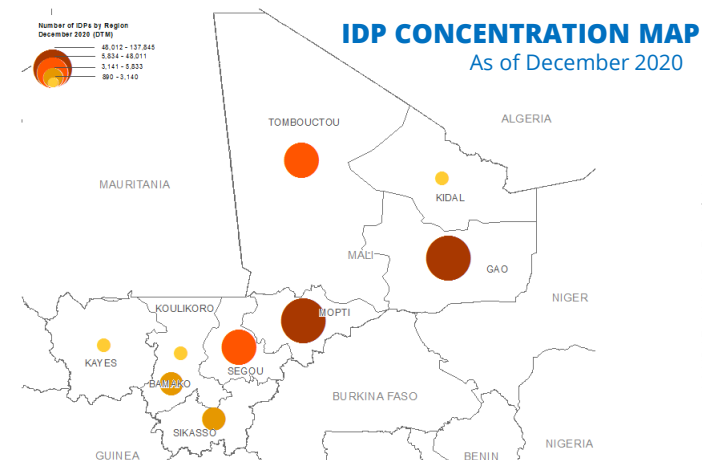
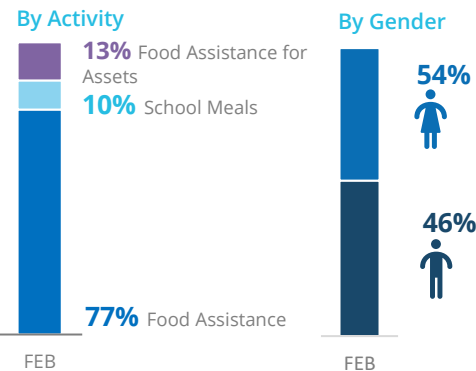


## PEOPLE ASSISTED Crisis Response

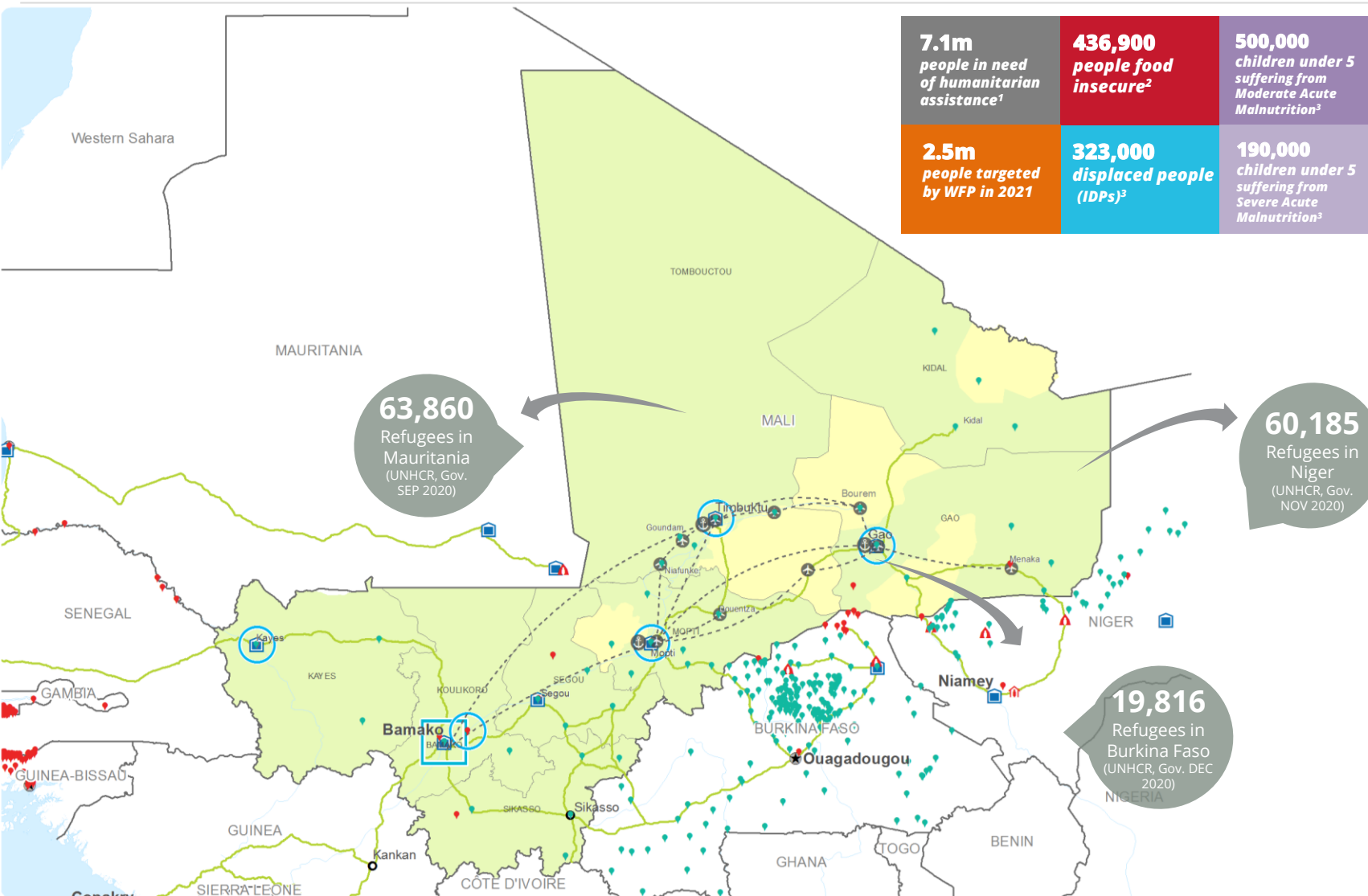


SOURCE: WFP, MAR 2021

## OPERATIONAL PROFILE



SOURCE: UNHCR, 15 April 2021



### CH Food Security Classification October - December 2020

- No data
- Minimal (Phase 1)
- Stressed (Phase 2)
- Crisis (Phase 3)
- Emergency (Phase 4)
- Famine (Phase 5)

- Country Office
- Sub Office
- Field Office

- IDP Camp
- IDP Center
- IDP Location

- Refugee Camp
- Refugee Center
- Refugee Location

- Warehouse
- UNHAS Connection
- UNHAS Route
- Road Supply Route

- National Capital
- Major Town
- Intermediate Town
- Small town
- International Boundary
- Region Boundary
- River

Sources: WFP, UNGIWG, GAUL, GLCSC, OCHA, UNHCR. The designations employed and the presentation of material in the map(s) do not imply the expression of any opinion on the part of WFP concerning the legal or constitutional status of any country, territory, city or sea, or concerning the delimitation of its frontiers or boundaries. © World Food Programme 2021.

<sup>1</sup>Mal Humanitarian Response Plan 2021  
<sup>2</sup>November 2020 Cadre Harmonisé, IPC Phase 3-4, current period, OCT-NOV 2020  
<sup>3</sup>Government of Mali Jan 2021. <sup>4</sup>UNHCR Nutrition Cluster, Jul 2020

## FUNDING Mali Country Strategic Plan (CSP 2020-2024)

April - September 2021

# US\$94m

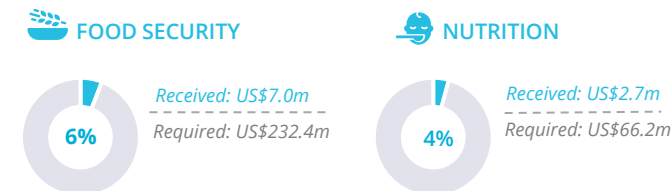
Net funding requirements

2021 Requirements: US\$ 119m

94%

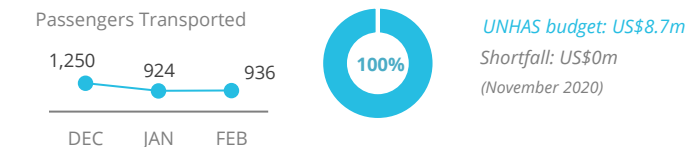
SOURCE: WFP, 26 MAR 2021

## WFP-LED AND SUPPORTED CLUSTERS



SOURCE: FTS 26 MAR 2021

## UN HUMANITARIAN AIR SERVICES (UNHAS)



SOURCE: WFP/UNHAS, MAR 2021

**WFP LEVEL 3 EMERGENCY**  
Level 2 Emergency since 12 January 2012 and part of the Central Sahel Level 3 Emergency since 09 September 2019

SITUATION REPORT and COUNTRY BRIEFS  
Mali CSP

