

WFP D. R. Congo

External Situation Report #29

7 October 2021



In Numbers

26.2 m highly food-insecure people

26 provinces affected

5.5 m people displaced

4.6 m beneficiaries reached since the beginning of 2021

Highlight in September 2021

- **WFP Country Director's mission to Egypt:** between 7 and 9 September, WFP DRC Country Director, Peter Musoko, led a DRC delegation to the first edition of the International Cooperation Forum (ICF), organised in Cairo by the Government of Egypt.

knowledge on resilience projects developing rural communities and enhancing livelihoods for lower-income communities. The group also visited projects and beneficiaries supported by WFP's initiatives in Upper Egypt, including the innovative School Community Hubs. This mission signalled an important step towards increased South-South cooperation with the DRC in the year of its African Union chairpersonship.

- **Nutrition situation:** according to the latest Integrated Food Security Phase Classification (IPC) [Acute Malnutrition analysis](#), nearly **900,000 children under five** and over **400,000 pregnant or lactating women** are likely to be acutely malnourished through to August 2022 in the 70 health zones analysed out of a total of 519 health zones. These estimates include more than **200,000 severely malnourished children** requiring urgent care. Key drivers include poor feeding practices; acute food insecurity; high prevalence of childhood illnesses (malaria and diarrhea) and outbreaks of measles and cholera; poor hygiene conditions (inaccessibility to adequate sanitation facilities); very low access to drinking water, and the security situation resulting from massive population displacement.

- **Deputy Country Director-led mission to Eastern DRC:** from 17 to 27 September, WFP Deputy Country Director Operations Natasha Nadazdin led a management oversight mission to Eastern DRC. The WFP delegates visited offices in Bukavu, Beni, and Goma; met with NGO and UN partners; oversaw distribution sites and discussed WFP operations in the region with local and provincial authorities. Among the topics discussed were pipeline breaks that recently led to reduced in-kind food rations; 2022 funding of Cash-Based Transfer (CBT) activities, challenges to the

Total funding requirements in 2021

USD 662.5 m

WFP 6-months Net Funding Requirements (Oct 2021 – Mar 2022)

Food Assistance	USD 41.6 m
Nutrition	USD 8.6 m
Other activities	USD 23.3 m
Total	USD 73.5 m

Situation Update

- **WFP Country Director's mission to Egypt:** from 7 to 9 September, WFP DRC Country Director, Peter Musoko, led a DRC delegation to the first edition of the International Cooperation Forum (ICF), organised in Cairo by the Government of Egypt. The Country Director was joined by DRC's Vice-Minister for Education Mrs Aminata Namasiya and Vice-Minister for Planning Mr Crispin Mbadu Phanzu. Mr. Musoko and the Vice-Minister for Planning participated in a panel discussion on food security in the digital age, alongside the WFP Regional Directors for Southern Africa and West Africa. WFP senior officials and senior government officials from the African continent attended the event. Following the conclusion of the conference, the delegates went on to visit the Luxor Centre for Innovation and Knowledge Sharing of Excellence. The delegation promoted discussions to exchange

implementation of resilience projects and opportunities for collaboration with partners.

- **WFP DRC retreat:** from 14 to 16 September, WFP DRC's Heads of Area Office (HoAO), Heads of Sub Office (HoSO), and Heads of Unit (HoU) from the Country Office participated in a retreat in Kinshasa. The objective was to refine the priorities for WFP DRC's operations until the end of 2021. Participants discussed significant obstacles for the organisation and collaboratively designed solutions. The retreat strictly respected all COVID-19's distancing and prevention regulations.

WFP Response

- Under the Country Strategic Plan 2021-2024, WFP continues with its large-scale assistance, targeting **8.7 million people** with food and nutrition assistance throughout 2021.



Food and Nutrition Assistance

- **Overview:** WFP DRC's distributions in September reached some **1,280,000 beneficiaries** with either cash, in-kind, or nutrition assistance to prevent and treat Moderate Acute Malnutrition (MAM).

- By the end of September, WFP reached **393,000 people** with CBT. The Bukavu office has postponed its cash distributions planned for September to early October due to verifications and preparations of beneficiary lists.
- In-kind assistance advanced well, having reached **503,000 individuals** in September.
- WFP provided **383,000 pregnant and lactating women or children** with nutrition assistance in September. MAM prevention activities in the Kasai were postponed due to supply disruptions in stocks of Specialized Nutritious Foods (SNF).

- **Tanganyika:** in September, WFP's Kalemie office reached **246,000 beneficiaries** across all transfer modalities. It included in-kind distributions in Kalemie, Pweto, Manono and Nyunzu and CBT distributions in Kalemie (direct cash transfers) and Kabalo (Mobile Money Transfers - MMT).

- **Kasai central and Kasai oriental:** the WFP office in Kananga reached **168,000 beneficiaries** in September with either in-kind, CBT, or Nutrition assistance. This included cash assistance in the health zones Bena Leka and Katende in the Kasai central province. In-kind assistance took place in the province of Kasai Central. WFP organised a Nutrition and Supply Chain mission to Kananga and Tshikapa in the province of Kasai oriental to manage operational

changes resulting from various factors, such as rainy season disruptions.

- **Kasai:** in September, WFP's Tshikapa office assisted **55,000 conflict-affected people** with in-kind contributions in the Banga Lubaka health zone. WFP assisted **62,000 vulnerable people** in 11 health areas in the Kakenge health zone with CBT. This was a two-month distribution covering August and September, with transfers expected to continue throughout the first week of October. MAM treatment activities picked up in September, including carry over distributions from August.

- **Ituri:** WFP distributed in-kind food commodities to slightly over **89,000 vulnerable people** in the health zones of Irumu and Gethy health zones in September. **51,000 people** received cash assistance, including refugees in the Meri and Biring camps, internationally displaced peoples in Mahagi territory and Ebola survivors in the Kasenyi site via MMT.

- **North Kivu:** the WFP Goma Office reached an estimated **378,000 people** through in-kind food distributions, CBT, or nutrition activities for MAM treatment and prevention in September. In-kind distributions targeted internally displaced peoples and vulnerable host families living in Masisi, Rutshuru, Lubero and Beni territories. Cash transfers in Beni and Lubero territories reached **145,000 beneficiaries**. Through nutrition prevention and treatment activities combined, WFP assisted **79,000 children and pregnant or lactating women and girls**.

- **South Kivu:** in September, the Bukavu office reached **66,000 people** with in-kind food distributions. These included displaced peoples, returnees and host families in Kalehe and Mwenga territories. WFP responded to the postponement of CBT distributions planned for September with a joint meeting with partners on 30 September to immediately cover gaps by commencing a double distribution in October. **46,000 children aged 6-59 months and pregnant and lactating women** received MAM treatment assistance, while MAM prevention reached **44,000 beneficiaries**.

- **Resilience:** September marked the start of the implementation of a joint WFP-FAO project in the territories of Luiza and Kananga hinterland. 25 participants from UN agencies, provincial authorities, civil society, the private sector, and national and international NGOs participated in workshops preparing the Integrated Context Analysis and Sectoral Livelihoods Planning to define resilience in the region.

- **Assistance to refugees:** WFP is closely monitoring the arrival of **8,000 Congolese migrants** at the Kamajo border post (Kasai

province) from Angola since 6 September. In September, WFP completed cash distributions in the territory of Bosobolo (North Ubangi province), which reached **14,000 refugees** from the Central African Republic.

Supply Chain

- **Local food quality tests:** in early September, WFP met with the Director of *Office Congolais de Contrôle* (OCC), DRC's quality regulatory body, to discuss the new testing protocol applied by WFP for locally procured Maizemeal (MML). WFP's regional bureau for Southern Africa sent a delegation of experts on a Food Safety and Quality (FSQ) mission to Kinshasa, Goma and Bukavu to identify well-equipped and suitable local laboratories that respect WFP's robust global FSQ standards. The experts also trained WFP DRC staff on sampling methodologies.
- **Airlift:** WFP reacted and adapted to pipeline breaks in specialised nutritious food in Kasai region by facilitating the urgent airlift of **180 MT** of Corn Soya Blend Plus (CSB+) from Kinshasa to Kananga. This should provide sufficient food for MAM treatment in the coming two months.
- **Procurement:** WFP organised the procurement of **2,500 MT** of Global Commodity Management Facility (GCMF) maize grains in Tanzania. WFP arranged to mill, fortify and supply the maize to Bunia in October.

Clusters and Common Services

Logistics Cluster (LogCluster)

- **COVID-19:** the LogCluster continues to provide free storage of COVID-19 items in support of the pandemic response in DRC.
- **Information Management/Geographic Information Systems:** updated the [physical access constraints map](#) of the axis Salamabila - Kayembe, Malinde - Sebele road, with road hotspots GPS coordinates collected from Bukavu.
- **Updated and shared Information Management/logistics documents:** [DSL form](#), [unhas-planning-flights](#) and others.
- **Humanitarian Fund logistics allocation:** the LogCluster continues its mandated responsibility to coordinate the allocation of **USD 3 m** to improve the physical access in the eastern operational humanitarian regions. The LogCluster worked with the DRC Humanitarian Funding team on the proposal feedback for the logistics allocation for partners.

Bilateral Services Provision (BSP)

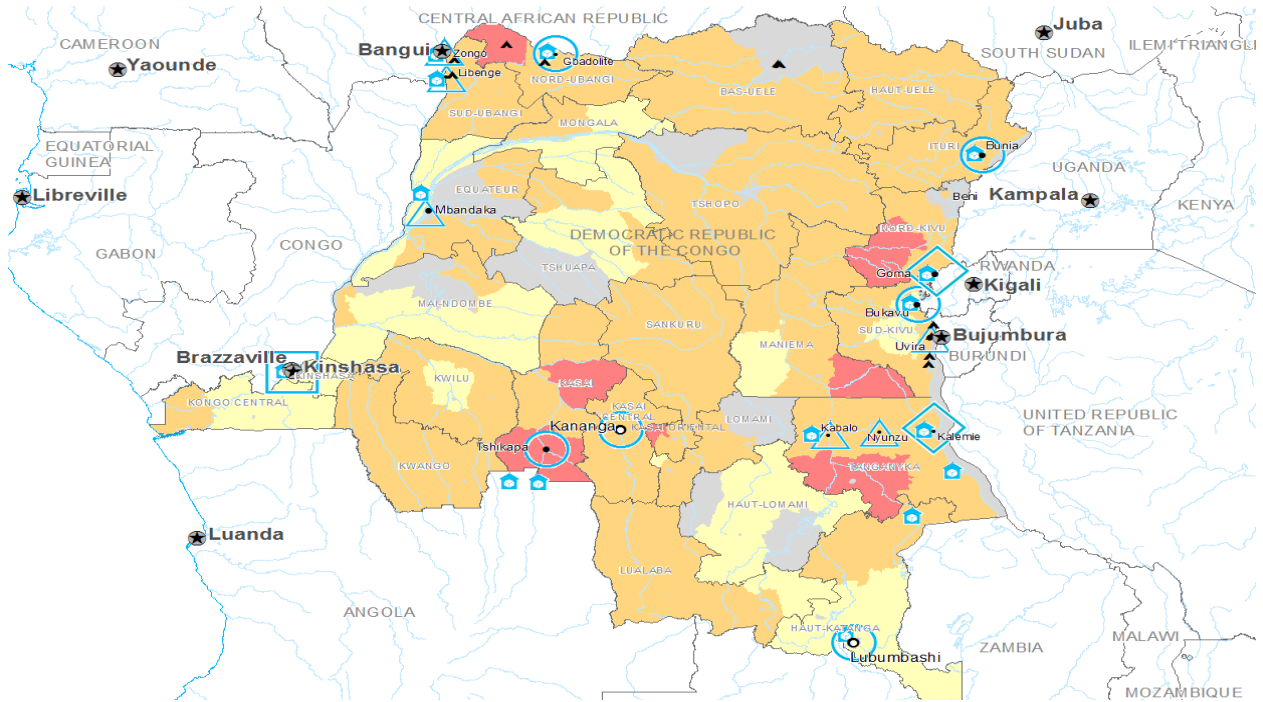
- **Air Transportation:** WFP transported a light vehicle/land cruiser from Goma to Mbuji-Mayi on behalf of WHO.
- **Medical and nutritional food delivery:** WFP delivered medical and nutritional food items from WFP warehouses in Kinshasa to third party sites supporting activities carried out by Action Against Hunger (ACF), UNFPA and WHO.

UN Humanitarian Air Service

- **Regular and special flights:** throughout September, UNHAS DRC and ECHO flights managed by WFP/UNHAS transported **5,162 passengers** and **94 tons** of essential light cargo. UNHAS also performed 9 medical evacuations.
- **Tshikapa Airport runway:** on 27 September, UNHAS started the Tshikapa airport runway rehabilitation works. The project, funded by UNHAS itself, will continue for the coming three months. During this period, flights will only operate once a week to Tshikapa (on Fridays).
- **Walikale Airport:** on 30 September UNHAS conducted a recce flight to Walikale Airport (government-owned) to confirm its suitability. A previous assessment found the area unsuitable for operations and recommended some maintenance works to be done. The new assessment found improved conditions and UNHAS resumed flights to Walikale on 1 October.
- **Flight schedule:** a new weekly flight schedule is in operation since 27 September. UNHAS is coordinating with partner organizations operating in the new destinations in Ituri and North Kivu provinces to assist with landing zone security, maintenance, and the nomination of field focal personnel in some locations.
- **Quality Assurance Exercise:** WFP HQ Quality assurance unit conducted an evaluation audit exercise in DRC from 7 to 15 September. This exercise covered all operational aspects from safety and risk management; aviation security; internal controls on booking and user eligibility; documentation, and management operations.
- UNHAS operations face a **shortfall of over USD 8 million** to continue its current services during the first quarter in 2022.

Communications

- **New story published on displaced people:** an insight story on assistance to displaced people in North Kivu (with USAID support) in [French](#) and [English](#).



<p>Acute Food Insecurity Phase August- December 2021</p> <ul style="list-style-type: none"> No data Minimal Stressed Crisis Emergency Famine 	<ul style="list-style-type: none"> Country Office Area Office Sub Office Field Office Warehouse Refugee Camp 	<ul style="list-style-type: none"> National Capital Major Town Intermediate Town Small town 	<ul style="list-style-type: none"> International Boundary Province boundary River
---	--	---	--

Special thanks to our donors in 2020 - 2021 (listed alphabetically)



Contacts

- Peter MUSOKO, Country Director: peter.musoko@wfp.org
- Leonardo DASILVEIRA, Operational IM & Reports Officer: leonardo.dasilveira@wfp.org
- For further information, visit the D.R. Congo page [here](#).